

Friday 1 August 2014

## **COMMUNITY ASKED TO HAVE SAY ON RATES**

City of Ryde residents are being asked to consider a rates increase to help close a funding gap that is preventing the Council from maintaining the City's ageing roads and footpaths to an acceptable standard.

Community consultation will run from August to September and ratepayers have been provided with detailed information on the rates proposal and asked to provide feedback on a range of options.

Mayor, Cllr Roy Maggio, said: "We have a good financial record and have recently identified internal savings of \$2.5million a year, but like many councils across NSW our general rate revenue, which is capped by the State Government to annual increase of around 3%, is not adequate to keep pace with the increased costs of maintaining our infrastructure, in particular roads and footpaths.

"We know that increases are never popular, but the reality is if we don't secure the future of our City now, then our assets will continue to decline."

The Council is responsible for more than \$2 billion worth of public assets for the community – including 321 kms of roads, 448 kms of footpaths, 250 kms of drains, 55 sportsgrounds, 94 playgrounds and 205 hectares of natural areas.

The Mayor added: "As a Council we know that something needs to happen now to secure Ryde's financial sustainability for current and future generations."

At the end of the eight week community consultation period, all responses will be collated and the Council will reconsider the proposal to apply to the Independent Pricing Regulatory Tribunal, the State Government agency responsible for determining price increases for utilities and service.

Friday 14 November 2014

## **RYDE RATEPAYERS SUPPORT REASONABLE RATE INCREASE**

A decision taken by a majority vote of Council last week in relation to applying for a Special Rate Variation shows that the City of Ryde Council is serious about preserving the future integrity and independence of Ryde.

City of Ryde Mayor, Cllr Bill Pickering said: "In surveying our community, we received significant support for a reasonable rate increase to secure our long term future.

"The decision is based on support from close to sixty percent of rate payers who responded to the Council's comprehensive community consultation program. Their feedback showed that ratepayers not only understand the Council's financial difficulties in overcoming current funding restrictions but also indicates support of the Council's program for a progressive, inclusive future for Ryde.

"If we are to survive into the future we have to demonstrate that we are financially responsible and fit to lead our community. The rate payers of Ryde support our realistic approach and that we must move forward with purpose to achieve our shared goals."

Since July, the Council has worked with the local community through detailed information packs, community meetings, workshops and surveys to explain our funding structure, the savings the Council has put in place, and why it is necessary to secure extra capital to maintain our services and assets to an acceptable standard.

The next step in the public consultation process is for details of the Special Rates Variation proposal to be included in the Council's Four Year Delivery Plan 2014-18 which goes on public exhibition for an extended six-week period from Monday 17 December 2014 to Friday 6 February 2015.

Full details of the Special Rate Variation community consultation process at [www.futureryde.com.au](http://www.futureryde.com.au)

Wednesday 10 December 2014

## REVISED DELIVERY PLAN DELIVERING ADDITIONAL WORKS FROM PROPOSED INCREASE IN RATES

The City of Ryde Council endorsed a Revised Delivery Plan for 2014/2018 and Operational Plan 2014/2015 at its meeting on Tuesday 9 December 2014.

This follows Council's support for a proposed Special Rate Variation (SRV) of a 7% increase over 4 years commencing 1 July 2015 that is proposed to be an on going permanent increase. This will have a cumulative gross increase of 31.1% over the 4 years ending 2018/2019 and to a net increase of 18.5% over and above the rate peg option.

The increase varies depending on the valuation of the individual ratepayer's property. However for the average residential dwelling ratepayer, they will experience a 28.7% (\$305.35) cumulative increase over the 4 years and a net increase of 16.1% (\$171.77) over the 4 years after allowing for the 12.6% (\$133.58) of rate peg increases.

The SRV that is proposed to commence in the 2015/2016 year will raise additional funds and undertake works in the following areas over the next 3 years of the Delivery Plan;

Infrastructure Asset	2015/16 (\$M)	2016/17 (\$M)	2017/18 (\$M)	Total (\$M)
Roads	1.79	1.91	2.87	6.57
Footpath	.20	.51	.53	1.24
Kerb and Gutter		.21	.27	.48
Civic Centre		.31	.32	.63
Stormwater		.51	1.06	1.57
Playing Field		.26	.53	0.79
Playground equipment		.41	.64	1.05
	<b>1.99</b>	<b>4.12</b>	<b>6.22</b>	<b>12.33</b>

The Draft Delivery Plan is on public exhibition from Wednesday 17 December 2014 to Friday 6 February 2015 and Council is inviting public submissions on the Draft Delivery Plan. Following submissions closing, a report will be submitted to Council on 10 February 2015.

Council's Mayor, Bill Pickering, stated that Council was mindful of the positive response from the City of Ryde community to maintain current services and service standards. He also emphasised that Council had complemented this proposed SRV with a reduction in Council's operating costs and it was also seeking other opportunities in raising other source of revenue to minimise the impact on the City's ratepayers.

---

Media contact: Lee Kirkland City of Ryde Media Officer 9952 8083 0434306444 [lkirkland@ryde.nsw.gov.au](mailto:lkirkland@ryde.nsw.gov.au)



Thursday 12 February 2015

## **COUNCIL ADOPTS THE REVISED DELIVERY PLAN AND ENDORSES A SPECIAL RATES APPLICATION TO IPART**

The City of Ryde at its meeting on Tuesday 10 February 2015 endorsed the Revised Delivery Plan for 2014/2018 and Operational Plan 2014/2015, which includes Council making an application for a Special Rating Variation to the Independent Pricing and Regulatory Tribunal [IPART].

This follows Council's support for a proposed Special Rate Variation (SRV) of a 7% increase over 4 years commencing 1 July 2015 that is proposed to be an on going permanent increase.

Council's Mayor, Bill Pickering at Council's meeting on Tuesday 10 February 2015 gave two examples of what this means for our ratepayers. An owner of a residential property valued at \$645,150 will expect an estimated increase of \$64 per annum resulting in an additional \$290 over four years. An owner of a unit dwelling with a land value of \$92,510 will experience an estimated increase of \$39 per annum or \$225 over four years.

The SRV that is proposed to commence in the 2015/2016 year will raise additional funds and undertake works in infrastructure over the remaining term of this Delivery Plan and is proposed to be ongoing.

The Special Rate Variation application will be submitted by 16 February 2015 to IPART for consideration, with a determination by 19 May 2015.

Council's Mayor, Bill Pickering, also stated that Council was mindful of the positive response from the City of Ryde's community to maintain current services and service standards. He also emphasised that Council had complemented this proposed SRV with a reduction in Council's operating costs and it was also seeking other opportunities in raising other sources of revenue, to minimise the impact on the City's ratepayers.

---

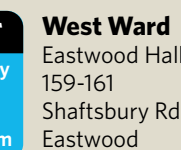
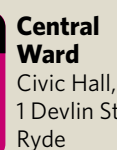
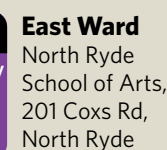
Media contact: Angela Jones-Blayney City of Ryde Communications and Media 9952 8480 | 0407 958 023  
[ajones-blayney@ryde.nsw.gov.au](mailto:ajones-blayney@ryde.nsw.gov.au)





Lifestyle and opportunity at your doorstep

"We're here to listen"



Register your interest via email at [future@ryde.nsw.gov.au](mailto:future@ryde.nsw.gov.au) or call 9952 8222.

Council is considering making an application to the Independent Pricing and Regulatory Tribunal (IPART), for a special rate variation to help fund the increased cost of maintaining our City's assets and infrastructure such as roads, footpaths, cycleways and drainage. Council is proposing three options for you to consider and we invite you to attend a Community Meeting near you.



## The Mayor's Community Message

Clr Roy Maggio

### Out and About

A busy weekend of community functions saw me at Meadowbank Park attending a fundraiser for Cure4Kids; a very worthy cause helping to improve the survival rates of children with catastrophic illnesses in countries with limited resources. Thanks ERNA and all the netball clubs that participated.

I also attended the first Rotary Club of Ryde's Signature Dinner, a gala event showcasing and celebrating the City of Ryde's contribution to our community and communities around the world. It was a great night of fund raising and I was impressed by the great work carried out by various groups.

### Top marks for National Tree Day

National Tree Day's annual community planting event was a huge success on Sunday, creating a habitat haven at Waterloo Park with the planting of 550 native plants.

My special thanks to the nearly 90 men, women and children who turned up eager to lend a hand. My thanks also to the Council staff who organised the day and the crew who did a superb job with the site preparation including spreading a whopping 40m<sup>3</sup> of mulch.

The morning couldn't have been better. The enthusiastic planters did a top job getting the plants into the ground, enjoying the sunshine and friendship, and downing no less than 120 sausage sandwiches at the end. What a great example of what a community can achieve when it works together.

### Let's be litter-free

Eastwood is one of our City's most vibrant suburban centres, buzzing with workers, shoppers, diners, students and retailers. With such a big concentration of activity every day of the week, it's important that everyone takes responsibility for keeping the area litter-free.

An awareness and education campaign is up and running with individuals and business operators being asked to take the Anti-Littering Pledge and to act on the pledge. This is not a one-time commitment - it's for today, tomorrow and generations to come. Signage is in place and you can show your support for the restaurants and shops who have signed the pledge and display certificates identifying that they

are committed to keeping Eastwood 'Litter-Free'. More cigarette butt bins and additional cleansing operations and patrols have also been introduced to assist with the campaign.

You can take the pledge online at [www.ryde.nsw.gov.au/eastwoodlitterfree](http://www.ryde.nsw.gov.au/eastwoodlitterfree)

### Centenary of Anzac

Members of the community are invited to a special 'Ryde Remembers' ceremony commemorating the WWI Battle of Lone Pine.

The Battle of Lone Pine (6-9 August 1915) was one of the bloodiest and hardest fought actions of the Gallipoli campaign. 2,277 Australian soldiers were killed or wounded. Seventeen of those who gave their lives came from the Ryde area and school students will be involved in a special tribute to them.

The ceremony will also include the symbolic planting of a solitary pine tree and you are welcome to join the laying of wreaths. Morning tea will also be served. If you would like to attend please advise Council at [events@ryde.nsw.gov.au](mailto:events@ryde.nsw.gov.au)

**When** Wednesday 6 August

**Time** 10.00 - 10.45am

**Where** Ryde Cenotaph, Ryde Park, Blaxland Road, Ryde

### Securing our Future

By now, many residents will have received a brochure with their rates notice titled 'Securing our Future' which details options for a special rate variation Council is considering. Council staff will be conducting a full community consultation program throughout August and September so if you would like to know more, please attend.

*Sincerely,*  
**Clr Roy Maggio - Mayor**

If you want to promote a local event or community initiative please contact me on 0418 299 347, at my office 9952 8222 or email [mayor@ryde.nsw.gov.au](mailto:mayor@ryde.nsw.gov.au) If you would like to meet and discuss any matter with the Mayor please call Linda on 9952 8222. To view the weekly Mayor's Message go to [www.ryde.nsw.gov.au/Mayor](http://www.ryde.nsw.gov.au/Mayor)

## Upcoming Events

### Authors Platform: Kate Forsyth

Bestselling author Kate Forsyth will visit Ryde Library to discuss her new book *Dancing on Knives*. Learn about Kate's inspiration for this suspenseful murder mystery.



**When** Thursday 31 July  
**Time** 6.30 - 7.30pm  
**Where** Ryde Library  
**Cost** Gold coin contribution  
**Bookings** 9952 8352

### Ryde Remembers: Researching First World War online records

Join us for a workshop which will show you records currently available to help you locate information about your Australian WWI ancestor. Laptop computers will be available for the research exercises or you can bring your own wireless device - laptop or tablet - to join in. Experience with the Internet essential.



**When** Monday 4 August  
**Time** 11.00am - 1.00pm  
**Where** West Ryde Library  
**Cost** Gold coin contribution  
**Bookings** Essential, call 9952 8352

### Wrap with Love - Knit In

Bring your knitting needles, crochet hooks and sewing needles and be part of this fantastic community event. Whether you knit, crochet or sew we need your help. Light refreshments provided. All welcome!



**When** Friday 8 August  
**Time** 10.00am - 2.00pm  
**Where** Ryde Library

### 50th Anniversary of the Opening of the Civic Centre

A commemorative plaque will be unveiled, followed by morning tea and the viewing of a display illustrating the story of the commissioning, construction and 1964 opening of the Ryde Civic Centre.



**When** Friday 15 August  
**Time** 11.00am - 12 noon  
**Where** Civic Centre, 1 Devlin Street, Ryde  
**Bookings** Essential, call 9952 8222 or email [cityofryde@ryde.nsw.gov.au](mailto:cityofryde@ryde.nsw.gov.au)

## SecondHand Saturday

### One Person's Trash is Another Person's Treasure

The City of Ryde provides residents with five scheduled household cleanups per year - dates for these are found on your area Waste Collection Calendar.

If you live in Zone 4, your Kerbside Council Cleanup is this Monday 4 August. Place items out during the weekend only to avoid fines.

### Hold a garage sale prior to your cleanup and you can:

- Prevent re-usable items going to landfill as well as put cash in your pocket
- Promote community spirit

The City of Ryde will advertise YOUR garage sale for FREE if you send in a registration form 14 days PRIOR to your garage sale.

**Garage Sale Locations**  
**Saturday 2 August from 9.00am**  
**• 164 Quarry Road, Ryde**

To register your address for FREE, call the City of Ryde Customer Service Centre on 9952 8222 and ask to register for a Garage Sale/ SecondHand Saturday, or find the form online at [www.ryde.nsw.gov.au/secondhandsaturday](http://www.ryde.nsw.gov.au/secondhandsaturday)



**RYDE HUNTERS HILL SYMPHONY ORCHESTRA PRESENTS**  
**THE FLAVOURS OF ASIA**  
**When** Sunday 10 August  
**Where** Ryde Civic Hall  
**Time** 3.00pm  
**Cost** \$15 - 35 + online specials

East meets West in a fusion of classical music presented by Ryde Hunters Hill Symphony Orchestra:  
• *Butterfly Lovers Hey/Chen* (Soloist - Rebecca Irwin, Violin)  
• *In the Steppes of Central Asia* - Alexander Borodin  
• *Mao's Last Dancer Suite* - Christopher Gordon  
• *Crouching Tiger Hidden Dragon* - Tan Dun  
\*Meet local composer Christopher Gordon  
**To buy tickets** [www.rhso.org.au](http://www.rhso.org.au)  
**or email** [information@rhso.org.au](mailto:information@rhso.org.au)





# City of Ryde

Lifestyle and opportunity at your doorstep

"We're here to listen"

City news for Ryde, North Ryde, East Ryde, West Ryde, Chatswood West, Denistone, Denistone East, Denistone West, Eastwood, Gladesville, Macquarie Park, Marsfield, Meadowbank, Melrose Park, Putney and Tennyson Point.

Securing Our  
**future**  
www.futureryde.com.au



## The Mayor's Community Message

Clr Roy Maggio

### Out and About

The reception to the Mayor's first Business Networking Lunch was very encouraging with 60 local business operators attending.

The City of Ryde is emerging as a globalised suburban centre with a young talented workforce, a culturally diverse population and strong business growth. With more than 92,000 jobs and a local economy worth more than \$13 billion, we are growing an average of 5% per annum, twice the NSW state average. Thanks to everyone for attending, especially Gavin Fox Smith, CEO of Johnson & Johnson Medical, for an outstanding presentation and unique insight into community responsibility of big business.

### Ryde Apprenticeship Expo

I attended the Ryde Apprenticeship Expo last week, which was well supported by exhibitors and interested youth who are looking for career opportunities.

### Ryde Rotary Dinner

As a passionate supporter of the immediate removal of graffiti, it was a pleasure to speak at a recent Ryde Rotary Dinner about the work that Council and Ryde Rotary have been doing since 2009 to educate the community and to reduce the incidence of graffiti.

### Education Week

During Education Week I presented certificates to students from Putney Public School for literacy and numeracy achievements. We have wonderful schools and educators in this City.

### Riding for Disabled - special presentation

Wal Scott-Smith, OAM, 92 years of age, was honoured with life membership by his friends at Riding for the Disabled on Thursday. A very special man, Mr Scott-Smith has been volunteering with RDA for about 25 years. The efforts of Mr Scott-Smith are even more amazing when you consider that he catches three modes of public transport to assist at the Riding for Disabled venue in Marsfield.

He has also been associated with the Scouting movement since 1934 where his involvement earned him an OAM. He is also the Chief Cenotaph Attendant at the Sydney Cenotaph, a position he has held for 68 years.

### Annual knit-a-thon

With needles at the ready, and a target of more than 500 knitted blankets for Wrap with Love, our community's top knitters will be put to the test at Ryde Library on Friday 8 August for the annual Wrap with Love charity knit-in. Over the past 12 months, knitting groups have been creating the thousands of squares it takes to make the wraps that are shipped around the world to children and people in need.

### Hockey news and North West Sydney Koalas Womens Football

On Saturday I attended the Ryde Hunters Hill Hockey Club Family Day which was well patronised and a great event. That evening I was present at the 50th anniversary of the Ryde Eastwood Womens Hockey Association. There was a great turnout and I am really pleased that associations such as this have been active in our local area for so long.

On Sunday it was a visit to another sporting day - the 2014 sponsor and community day for the North West Sydney Koalas Womens Football. This is another group contributing to the enjoyment of our community.

Sincerely,  
Clr Roy Maggio - Mayor

If you want to promote a local event or community initiative please contact me on 0418 299 347, at my office 9952 8222 or email [mayor@ryde.nsw.gov.au](mailto:mayor@ryde.nsw.gov.au) If you would like to meet and discuss any matter with the Mayor please call Linda on 9952 8222.

To view the weekly Mayor's Message go to [www.ryde.nsw.gov.au/Mayor](http://www.ryde.nsw.gov.au/Mayor)

## Upcoming Library Events



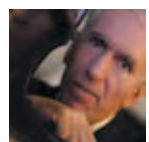
### Wrap with Love - Knit In

Bring your knitting needles, crochet hooks and sewing needles and be part of this fantastic community event. Whether you knit, crochet or sew we need your help. Light refreshments provided. All welcome!

**When** Friday 8 August  
**Time** 10.00am - 2.00pm  
**Where** Ryde Library

### Musical Morning Tea: Domenico Sepe Napolitana Extravaganza

Join us for a celebration of the enchanting and vibrant music of Napoli. An Italian treat for any music lover.



**When** Monday 11 August  
**Time** 10.30 - 11.30am  
**Where** Ryde Library  
**Cost** Gold coin contribution  
**Bookings** 9952 8352

### Tablet Basics

Learn the basics of the iPad and other touch screen tablets.

**1st hour (Optional):** Participants will learn about buttons, touch screen and tablet interaction.

**2nd hour:** Connecting to Wi-Fi, browsing the internet, downloading apps, and accessing Ryde Library eBooks.

**Participants must bring their own tablet device with passwords.**



**When** Monday 11 August  
**Time** 2.00 - 3.00pm (optional touch screen training), or 3.00 - 4.00pm (connecting to Wi-Fi, etc)  
**Where** Ryde Library  
**Cost** \$16.50 (\$11.50 for seniors)  
**Bookings** 9952 8352

### Authors Platform: Lex Marinios

From Kingswood Country to The Slap, Lex Marinios has enjoyed a full life as an actor on stage and on film. *Blood and Circuses* is the wry and charming story of a young Greek Australian boy, whose family ran a café in Wagga Wagga in the 1950s and who dreamt of making his life in the theatre.



**When** Thursday 14 August  
**Time** 6.30 - 7.30pm  
**Where** Ryde Library  
**Cost** Gold coin contribution  
**Bookings** 9952 8352

### Ryde Remembers: How to trace your Australian WWI ancestors

Are you interested in knowing what records are available to help you research your Australian WWI ancestor? In this illustrated lecture members of the Ryde District Historical Society will demonstrate and explain the variety of sources available to you.



**When** Saturday 16 August  
**Time** 10.00am - 12 noon  
**Where** West Ryde Library  
**Cost** Gold coin contribution  
**Bookings** 9952 8376

## Around the City



### 50th Anniversary of the Opening of the Civic Centre

A commemorative plaque will be unveiled, followed by morning tea and the viewing of a display illustrating the story of the commissioning, construction and 1964 opening of the Ryde Civic Centre.

**When** Friday 15 August  
**Time** 11.00am - 12 noon  
**Where** Civic Centre, 1 Devlin Street, Ryde  
**Bookings** Essential, call 9952 8222 or email [cityofryde@ryde.nsw.gov.au](mailto:cityofryde@ryde.nsw.gov.au)

**Exhibition period:** View the display in the foyer of Ryde Library that tells the story of this building from Friday 15 August - mid September.

### Leftover Makeover (LOMO) Cooking Demonstration

Love food? Love cooking great meals for your family and friends? Love to balance the budget and save money? Then you'll love our Leftover Make Over (LOMO) cooking workshop! This popular workshop fills quickly so book early. With correct planning, storage and some creativity, you can make exciting new meals from your leftovers, and save up to \$1,000 per year. Light lunch will be provided.



**When** Saturday 16 August  
**Time** 10.30am - 1.00pm  
**Cost** Free  
**Bookings** Essential, register online at [www.ryde.nsw.gov.au/lo](http://www.ryde.nsw.gov.au/lo) or call Council's Customer Service Centre on 9952 8222

### Guided Walk: Field of Mars

The Field of Mars Reserve is a 51 hectare wildlife refuge nestled between the Lane Cove and Parramatta Rivers. Join us as we walk through the bushland on the Kunzea Track and Sand Track. See the wildlife, birds and urban creeks. Learn about the Indigenous and European history of this area and the bush food/supplies which the local Aboriginal tribes and European settlers relied upon. Many of these plants are still found in the Field of Mars today. Easy to medium grade 2.5km walk suitable for adults and families with primary school or high school aged children.



**When** Sunday 17 August  
**Time** 11.00am - 1.00pm  
**Where** Field of Mars Reserve, 220 Pittwater Road, East Ryde  
**Cost** Free  
**Bookings** Essential, call 9952 8222. Book early as places are strictly limited

## Arts and Culture



### Artisans Ryde Winter Markets

Come and join in the fun of the Artisans Ryde Winter Markets. Artisans Ryde is a group of 27 local artists who will be selling handmade items including paintings, mosaics, jewellery, bags, children's accessories, calligraphy, ceramics and knitting. There will be free workshops in doodle art, mosaics, knotting and weaving.

**When** Saturday 9 August  
**Time** 11.00am - 3.00pm  
**Where** West Ryde Community Hall, 3 Anthony Road, West Ryde  
**More Info** Call Margaret on 0413 145 800 or email [artisans.ryde@gmail.com](mailto:artisans.ryde@gmail.com)

### Ryde Hunters Hill Symphony Orchestra presents

## THE FLAVOURS OF ASIA

East meets West in a fusion of classical music. Two great movie scores - Mao's Last Dancer by local composer Christopher Gordon and Tan Dun's Crouching Tiger Hidden Dragon. Plus Butterfly Lovers (Chen/Ho) famous modern Chinese classic and Borodin's In the Steppes of Central Asia. Guest conductor Andrew Del Riccio. Guest Soloist Rebecca Irwin.



**When** Sunday 10 August  
**Time** 3.00pm  
**Where** Ryde Civic Hall, 1 Devlin Street, Ryde  
**Cost** \$15 - \$35  
**Bookings** Online specials available [www.rhso.org.au](http://www.rhso.org.au)



### (SWAP) Sustainable Waste to Art Prize Awards Night and Exhibition

Artists and members of the community were invited to enter the SWAP competition and exhibition with artworks and up-cycled functional objects that respond to themes connected to sustainable living or waste, by producing works that either address these themes, or are created from recycled waste materials.

Come and join us at the awards night as the SWAP winners are announced and the exhibition is officially opened by City of Ryde Mayor, Clr Roy Maggio.

**When** Thursday 14 August  
**Time** 6.00 - 8.00pm  
**Where** See Street Gallery, Meadowbank Campus, See Street, Meadowbank

**Cost** Free  
**Exhibition** 14 - 30 August, 11.00am - 4.00pm (Closed Sunday and Monday)

Council is considering making an application to the Independent Pricing and Regulatory Tribunal (IPART) for a special rate variation (SRV) to secure funding our City and community needs for future works and services.

Whilst Council currently has a 'sound' financial position, there is an increasing gap of \$8.22 million between Council's income and the money required to maintain Council's infrastructure like roads, footpaths, and stormwater drains, etc.

An important part of the decision making process is gaining community feedback on the proposal.

### How can I find out more?

- Visit our dedicated website [www.futureryde.com.au](http://www.futureryde.com.au) to read the brochure and find out more information, ask a question, take part in the survey and more.
- Drop into any of our information sessions across the City of Ryde listed on [www.futureryde.com.au](http://www.futureryde.com.au)
- Attend a Community Council Meeting near you listed below:

**AUG Wednesday 6** **Tonight's Meeting**  
7.30 - 9.00pm North Ryde School of Arts, 201 Coxs Road, North Ryde

**AUG Tuesday 19**  
7.30 - 9.00pm Civic Hall, 1 Devlin Street, Ryde

**SEPT Thursday 18**  
7.30 - 9.00pm Eastwood Hall, 159-161 Shaftsbury Road, Eastwood.

### We want your feedback

After you have reviewed the information and understand the options to make an informed decision, we encourage you to tell us your preferred option by:

- Returning the postage-paid postcard included with the brochure
- Attending one of our information sessions or community meetings
- Completing the online survey at [www.futureryde.com.au](http://www.futureryde.com.au)

If you need help understanding this proposal or if you require a translation of the brochure please contact us on 9952 8222.

## SecondHand Saturday

### One Person's Trash is Another Person's Treasure

The City of Ryde provides residents with five scheduled household cleanups per year - dates for these are found on your area Waste Collection Calendar.

If you live in Zone 4, your Kerbside Council Cleanup is this Monday 11 August. Place items out during the weekend only to avoid fines.

### Hold a garage sale prior to your cleanup and you can:

- Prevent re-usable items going to landfill as well as put cash in your pocket
- Promote community spirit

The City of Ryde will advertise YOUR garage sale for FREE if you send in a registration form 14 days PRIOR to your garage sale.

### Garage Sale Locations -

**Saturday 9 August from 9.00am**

- 33 Mirool Street, Denistone West
- 43 Henderson Street, Denistone East

To register your address for FREE, call the City of Ryde Customer Service Centre on 9952 8222 and ask to register for a Garage Sale/SecondHand Saturday, or find the form online at [www.ryde.nsw.gov.au/secondhandsaturday](http://www.ryde.nsw.gov.au/secondhandsaturday)







Lifestyle and opportunity at your doorstep

"We're here to listen"

City news for Ryde, North Ryde, East Ryde, West Ryde, Chatswood West, Denistone, Denistone East, Denistone West, Eastwood, Gladesville, Macquarie Park, Marsfield, Meadowbank, Melrose Park, Putney and Tennyson Point.



## The Mayor's Community Message

Clr Roy Maggio

### More than just a meal

Meals on Wheels is one of the most valued volunteer services operating today. These brave volunteers ensure a nourishing meal is delivered to thousands of people every day. They also provide an important community connection through calling at homes with a cheery greeting, daily contact and a check that each customer is 'safe and well'. From a humble beginning back in 1953 when a lady on a tricycle delivered a few meals to local residents, this wonderful organisation coordinates the delivery of daily meals to almost 60,000 people in Australia.

As this week celebrates Meals on Wheels Day, let's pay tribute to the estimated 170 local volunteers, who go quietly about delivering more than 700 meals. Their work enriches and nourishes our elderly, and those in need to remain at home. If you have a few hours to spare and would like to lend a hand contact Hunters Hill Ryde Community Services on 9817 0101 [office1@hhrcs.org.au](mailto:office1@hhrcs.org.au) or Christian Community Aid on 9858 3222 [administration@ccas.org.au](mailto:administration@ccas.org.au)

### Showcasing Willandra

Willandra House will open its doors over the next two weekends to showcase its history and the works of its two main residents - the City of Ryde Art Society and the Ryde District Historical Society.

I look forward to opening the Showcase this Saturday, and invite the community to pop-in and take a guided tour of the 170-year-old mansion, vote for the People's Choice in the City of Ryde Art Society's exhibition, sign-up for an art class or workshop for adults or children or join a society.

**When** Saturday 30 & Sunday 31 August; Saturday 6 & Sunday 7 September  
**Time** 2.00 - 4.00pm

**Where** Willandra House, 770 Victoria Road, Ryde. Enter via Belmore Street, then along Willandra Street.

### Spring Garden Comp

Spring is just around the corner, especially when you see so many beautiful gardens and balconies coming to life with greenery and splashes of colour.

There are still a few days left to get your entry in for our annual Spring Garden Competition. There are categories

for children, schools, bushcare groups, businesses, for big gardens, edible gardens, balconies and town houses. It doesn't matter if you're a beginner or a seasoned green thumb, get your entry in by Sunday 31 August. Judging takes place during September and then everyone is invited to a special evening in October when the winners are announced. [www.ryde.nsw.gov.au/springgardencompetition](http://www.ryde.nsw.gov.au/springgardencompetition)

### Differently Abled People (DAPA)

A multicultural gala showcasing the talents of differently abled people will be held at the Ryde Eastwood Leagues Club on Sunday 31 August from 4.00 - 8.00pm. The DAPA's Work for Life project employs many people with disabilities to work in an uplifting educational environment incorporating independent living skills. The gala will include a variety of dance and musical performances, artworks that can be purchased, food and beverages and an overall entertaining and joyous evening. Tickets are \$50 per person and you can book on-line at [www.dap.asn.au](http://www.dap.asn.au). See you there.

### Out and About

#### North Ryde Golf Club - 65th Commemoration Dinner

I attended a wonderful evening last Saturday held at North Ryde Golf Club to celebrate 65 years of support to local golfers.

#### Gladesville Hornsby First Division Grand Final at Christie Park

On Sunday, I attended the Gladesville Hornsby First Division Grand Final at Christie Park. I would like to offer my congratulations to all teams which took part in the soccer competition and thank all the club members and parents who support the players week after week.

### Sincerely,

Clr Roy Maggio - Mayor

If you want to promote a local event or community initiative please contact me on 0418 299 347, at my office 9952 8222 or email [mayor@ryde.nsw.gov.au](mailto:mayor@ryde.nsw.gov.au)

If you would like to meet and discuss any matter with the Mayor please call Linda on 9952 8222.

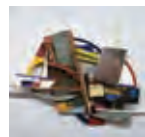
To view the weekly Mayor's Message go to

[www.ryde.nsw.gov.au/Mayor](http://www.ryde.nsw.gov.au/Mayor)

## Arts and Culture

### Sustainable Waste 2 Art Prize (SWAP) Exhibition

Last chance to see all the amazing artworks in the exhibition that were created for the Sustainable Waste 2 Art Prize (SWAP) competition. Artists and members of the community were invited to enter the competition and exhibition with artworks and up-cycled functional objects that respond to themes connected to sustainable living or waste, by producing works that either address these themes, or are created from recycled waste materials.



**When** Open daily until Saturday 30 August  
**Time** 11.00am - 4.00pm  
**Where** See Street Gallery, Meadowbank

## Around the City

### Child Restraint Check

Children up to the age of seven years must be correctly restrained in an approved child restraint, suitable for their age and size. Your child is twice as likely to be injured if you use the wrong car seat.

Make sure your child is safe with a free inspection by Authorised Restraint Fitters. You can have your child car seat, harnesses and booster seats checked for safety and fit. New restraints/child seats are also available for purchase from the fitters on the day.

For more information on the national child restraint laws and how to choose the right restraint for your child, go to [www.ryde.nsw.gov.au/childrestraints](http://www.ryde.nsw.gov.au/childrestraints)



**When** Thursday 28 August  
**Time** 10.00am - 1.00pm  
**Where** Argyle car park, Blaxland Road, Ryde (enter from Argyle Avenue)  
**Cost** Free  
**Bookings** Essential, call 9952 8222

## Around the City

### Litter Prevention Awareness Day in Eastwood

Help us turn Eastwood into a litter free place. Over 100 local businesses have signed the anti-littering pledge to keep the area around their business clean. Now it's your turn to sign up for the anti-littering pledge at this awareness day. Drop by to show your support and take the pledge. In return, we will give you a car rubbish bag to thank you for supporting this project. You can also continue to keep Eastwood clean by pledging online at [www.ryde.nsw.gov.au/nolitterineastwood](http://www.ryde.nsw.gov.au/nolitterineastwood) and dine in restaurants that support the anti-littering campaign. Look for the anti-littering posters displayed at the shopfront.

City of Ryde Council would like to thank Eastwood Chinese Senior Citizens Club, Tzu Chi Australia, Harmony of FITA, Eastwood Chamber of Commerce, Korean Times and the Korean Chamber of Commerce for their support on this project.



**When** Saturday 30 August  
**Time** 10.00am - 12 noon  
**Where** Eastwood Shopping Centre (outside Woolworths)

## Upcoming Library Events

### Musical Morning Tea: Owen Torr

Local harpist Owen Torr will charm with a selection of enchanting pieces. Light refreshments provided.



**When** Monday 8 September  
**Time** 10.30 - 11.30am  
**Where** Ryde Library  
**Cost** Gold coin contribution  
**Bookings** 9952 8352

## Have Your Say

### Section 94 Development Contribution Plan 2007 (Update 2014)

The City of Ryde resolved on 22 July 2014 to place the Draft Section 94 Development Contribution Plan 2007 - Update (2014) on public exhibition to seek community input.

This Update (2014) proposes a series of amendments to the Section 94 Development Contributions Plan 2007 which was adopted on 11 December 2007. The intended outcome of these amendments is to improve the descriptions of development types, recognise relevant legislation introduced since 2007 and enhance understanding of the operation of the Plan.

The plan is available for viewing at:

- City of Ryde Customer Service Centre, 1 Devlin Street, Ryde (Monday to Friday, 8.30am - 4.30pm)
- Ryde Planning and Business Centre 1 Pope Street, Ryde (Monday to Friday, 9.00am - 5.00pm)
- City of Ryde Libraries during branch hours
- [www.ryde.nsw.gov.au/haveyoursay](http://www.ryde.nsw.gov.au/haveyoursay)

Submissions must be in writing and marked 'Section 94 Development Contribution Plan 2007 - Update (2014)'.

**Email:** [cityofryde@ryde.nsw.gov.au](mailto:cityofryde@ryde.nsw.gov.au)

**Online:** [www.ryde.nsw.gov.au/haveyoursay](http://www.ryde.nsw.gov.au/haveyoursay)

**Post:** General Manager, City of Ryde, Locked Bag 2069, North Ryde NSW 1670  
Closing date for submissions is 4.30pm Friday 26 September 2014.

It is Council's policy that all submissions will be publicly accessible on request. Supply of personal information is voluntary, however anonymous submissions may be given less weight.

For more information call Customer Service on 9952 8222.

## Upcoming Council Meeting



**Planning and Environment Committee and Works and Community Committee Meetings**  
5.00pm. Council Chambers, 5th Floor, Ryde Civic Centre, 1 Devlin Street, Ryde.



**Council Meeting**  
7.30pm Council Chambers, 6th floor Ryde Civic Centre, 1 Devlin Street, Ryde

City of Ryde provides live streaming and archives of Council Meetings, go to [www.ryde.nsw.gov.au/councilmeetingslive](http://www.ryde.nsw.gov.au/councilmeetingslive)



Council is considering making an application to the Independent Pricing and Regulatory Tribunal (IPART) for a special rate variation (SRV) to secure funding our City and community needs for future works and services.

Whilst Council currently has a 'sound' financial position, there is an increasing gap of \$8.22 million between Council's income and the money required to maintain Council's infrastructure like roads, footpaths, and stormwater drains, etc.

An important part of the decision making process is gaining community feedback on the proposal.

### How can I find out more?

**SEPT Thursday 18** Attend a Community Council Meeting: 7.30 - 9.00pm Eastwood Hall, 159 - 161 Shaftsbury Road, Eastwood.

- Visit our dedicated website [www.futureryde.com.au](http://www.futureryde.com.au) to read the brochure and find out more information, ask a question, take part in the survey and more.
- Drop into any of our information sessions across the City of Ryde listed on [www.futureryde.com.au](http://www.futureryde.com.au)

## We answer your FAQs

**Q: How much additional income will Council get from \$94 new developments contributions and where will it be spent?**

**A:** An estimated \$100,000pa will come from \$94 contributions. By law this income must be used on new capital infrastructure and assets (eg. footpaths, roads, open space) located near the new development. It cannot be used to fix declining assets.

**Q: Why don't you get the additional income you need from businesses?**

**A:** Businesses make up about 4% of rateable properties in the City of Ryde but account for 30% of the rates income. Properties in the Macquarie Park business corridor and Top Ryde Shopping Centre pay an additional levy.

### Q: What about internal savings?

**A:** Council has identified \$2.5 million worth of efficiencies annually and is in the process of implementing these savings across the organisation. Council's independent auditor, PricewaterhouseCoopers has reviewed the Council's financial position and advised that further reductions in expenditures are not warranted and that 'Council requires more funding for asset renewal and maintenance of its existing infrastructure'.

## We want your feedback

To provide feedback or learn more about the rate proposal, you can phone 9952 8222, email [future@ryde.nsw.gov.au](mailto:future@ryde.nsw.gov.au) or go to [www.futureryde.com.au](http://www.futureryde.com.au) to tell us your preferred option.

## SecondHand Saturday

**One Person's Trash is Another Person's Treasure**  
The City of Ryde provides residents with five scheduled household cleanups per year - dates for these are found on your area Waste Collection Calendar.

If you live in Zone 7, your Kerbside Council Cleanup is this Monday 1 September. Place items out during the weekend only to avoid fines.

**Hold a garage sale prior to your cleanup and you can:**

- Prevent re-usable items going to landfill as well as put cash in your pocket
- Promote community spirit

The City of Ryde will advertise YOUR garage sale for FREE if you send in a registration form 14 days PRIOR to your garage sale.

**Garage Sale Locations Saturday 30 August from 9.00am**  
**14 Acacia Street, Eastwood**

To register your address for FREE, call the City of Ryde Customer Service Centre on 9952 8222 and ask to register for a Garage Sale/SecondHand Saturday, or find the form online at [www.ryde.nsw.gov.au/secondhandsaturday](http://www.ryde.nsw.gov.au/secondhandsaturday)

## Development Applications Received

Council has received the following Local Development Applications.

**Property:** 27-37 Delhi Road, North Ryde

**Local Development Application No.:** LDA2014/0077 - amended plans

**Applicant:** BGY North Ryde Pty Ltd

Amended plans have been submitted in respect of LDA2014/0077. The original development application proposes the construction of a mixed-use/residential development comprising 3 buildings known as Buildings A, B and C. These buildings had a height of 23, 27 & 13 storeys respectively. The application also proposed roadworks and landscaping works.

As part of the amended development, it is proposed to increase the width of Road 38 from 15m to 17.5m. As a result, the setout of Buildings B and C has been moved further west and north, and the footprint of Building B has been reduced. The height of Building A has been increased from 23 storeys to 25 storeys. Amendments are also proposed to the elevations in respect of materials and colours.

The application will be referred to the Joint Regional Planning Panel constituted under the *Environmental Planning and Assessment Act* for determination as the capital investment value exceeds \$20 million.

Submissions regarding the above applications must be lodged no later than 10 September 2014.

The above application is not 'designated development' under the terms of the *Environmental Planning & Assessment Act*, and the City of Ryde is the authority responsible for the determination of the applications. Anyone may make submissions concerning these applications. Submissions are required to be in writing. They should be addressed to the General Manager and sent by post, email or fax or delivered in person to the Civic Centre or the Ryde Planning and Business Centre. Should the submission be by way of objection to the proposal, the submission should specify the grounds of objection. The City of Ryde has resolved that all submissions received in relation to rezoning and development applications will be publicly accessible on request. The supply of personal information is voluntary. However if you choose to make an anonymous submission it may be given less weight (or no weight) in the overall consideration of the application.

The above application and accompanying information may be inspected electronically at the Ryde Planning and Business Centre, 1 Pope Street, Ryde (within Top Ryde City shopping centre) between 9.00am and 5.00pm Monday to Friday during the period in which submissions may be made. (Please note: on the second Thursday of each month the hours are 10.00am to 5.00pm.) To make an appointment go to [www.ryde.nsw.gov.au/planningandbusiness](http://www.ryde.nsw.gov.au/planningandbusiness) or call 9952 8222.

## YOUR LOCAL COUNCILLORS

Write to your Councillor at Locked Bag 2069, North Ryde NSW 1670.

To find out which ward you live in go to [www.ryde.nsw.gov.au/wardmap](http://www.ryde.nsw.gov.au/wardmap)

## EAST WARD



**Clr Roy Maggio, Mayor**  
Tel: 0418 299 347  
[mayor@ryde.nsw.gov.au](mailto:mayor@ryde.nsw.gov.au)



**Clr Craig Chung**  
Tel: 0412 605 597  
[cchung@ryde.nsw.gov.au](mailto:cchung@ryde.nsw.gov.au)



**Clr George Simon**  
Tel: 0468 478 086  
[gsimon@ryde.nsw.gov.au](mailto:gsimon@ryde.nsw.gov.au)

## CENTRAL WARD



**Clr Denise Pendleton**  
Tel: 9877 6658  
[dpendleton@ryde.nsw.gov.au](mailto:dpendleton@ryde.nsw.gov.au)



**Clr Bill Pickering**  
Tel: 0404 074 299  
[bpickering@ryde.nsw.gov.au](mailto:bpickering@ryde.nsw.gov.au)



**Clr Jeff Salvestro-Martin**  
Tel: 0413 043 423  
[salvestro-martin@ryde.nsw.gov.au](mailto:salvestro-martin@ryde.nsw.gov.au)



**Clr Sarkis Yedelian OAM**  
Tel: 8004 5053 or 0412 048 330  
[sarkis@yedelian.com](mailto:sarkis@yedelian.com)

## WEST WARD



**Clr Artin Etmekdjian**  
Tel: 0418 248 821  
[artine@ryde.nsw.gov.au](mailto:artine@ryde.nsw.gov.au)



**Clr Jerome Laxale**  
Tel: 0426 273 289  
[jlaxale@ryde.nsw.gov.au](mailto:jlaxale@ryde.nsw.gov.au)



**Clr Justin Li, Deputy Mayor**  
Tel: 0412 614 174  
[jl@ryde.nsw.gov.au](mailto:jl@ryde.nsw.gov.au)



**Clr Terry Perram**  
Tel: 9874 7904  
[tperram@ryde.nsw.gov.au](mailto:tperram@ryde.nsw.gov.au)



HURRY, ENTRIES CLOSE 31 AUGUST 2014

### ENTRY CATEGORIES:

- Large Gardens
- Courtyards & Balconies
- Children's Gardens
- School Gardens
- Commercial Gardens
- Small Gardens
- Edible Gardens
- Pre-school Gardens
- Community Gardens
- Bushcare Sites

To enter or for more information

[www.ryde.nsw.gov.au/springgardencompetition](http://www.ryde.nsw.gov.au/springgardencompetition) or City of Ryde Customer Service on 9952 8222.







Lifestyle and opportunity at your doorstep

"We're here to listen"

City news for Ryde, North Ryde, East Ryde, West Ryde, Chatswood West, Denistone, Denistone East, Denistone West, Eastwood, Gladesville, Macquarie Park, Marsfield, Meadowbank, Melrose Park, Putney and Tennyson Point.

## Community Update

### Spring in the garden

There's been a bumper crop of entries in the 2014 City of Ryde Spring Garden Competition. Organisers have received a record 65 entries, from gardeners aged from pre-schoolers to seniors.

A surge of interest in community gardens has seen five entries in this new category, plus a significant increase in small gardens, children's gardens and pre-school entries.

Judging will start soon, with Spring Garden Competition Ambassador Meredith Kirtton heading up a panel of five experts.

All the entrants will be treated to a gala event in October when the winners will be announced.

### Granny Smith Festival

It's hard to believe it but our premier community event, the Granny Smith Festival is just six weeks away on Saturday 18 October.

The Granny Smith used to our best kept local secret, but now people from all over Sydney come to be part of this great community celebration.

Community groups, performers, festival stall producers, carnival ride operators and foodies are all preparing to put on a day and night that's full of excitement, spills and thrills and good old fashioned fun.

So put Saturday 18 October in your diary for a great day all the family can enjoy.

### Small Business September

Ryde's Small Business September is up and running offering free workshops to business owners right through the month.

City of Ryde is home to over 10,000 registered and active businesses. Importantly, most of these businesses employ less than five people and are owned and operated by residents within Ryde Local Government Area.

Small business is really the backbone of our local economy, so if you are currently running a business, or considering starting one in the near future, this is an event not to be missed.

#### Upcoming workshops include:

- How to Recruit and Terminate Staff for Small Business, Monday 15 September
  - Accounting for Small Business, Tuesday 16 September
  - How to do Advertising and Market Research on a Budget, Wednesday 17 September
  - Small Business Websites and Social Media, Thursday 18 September
  - Time Management for Small Business, Monday 22 September
  - How to Prepare a Budget and Managing Cash Flow, Tuesday 23 September
  - Customer Service and Public Relations for Small Business, Wednesday 24 September
  - Selling Your Products Online & B-Pay Payment Gateways, Thursday 25 September
  - Setting up a Home Business, Tuesday 30 September
- For more information and to reserve your place go to [www.cityofrydebusiness.com.au](http://www.cityofrydebusiness.com.au) or phone 9952 8222.

## Kids Activities for the September/October School Holidays

### City of Ryde presents

#### Cinema in the Plaza - 'Frozen' (PG)

**When** Friday 19 September  
**Time** Movie starts at sundown, approximately 8.00pm  
**Where** Eastwood Plaza, Rowe Street, Eastwood  
**Cost** Free

**More info** [www.ryde.nsw.gov.au/cinema](http://www.ryde.nsw.gov.au/cinema)

#### Children's Essential Cycling Course (NSW Bike Week)

City of Ryde has partnered with Bike North to present the Children's Essential Cycling Skills course designed for children to improve their bike balance and handling.

**When** Saturday 20 September  
**Time** Session 1: 9.45 - 11.30am, Session 2: 11.00 - 12.45pm, Session 3: 1.30 - 3.00pm

**Where** Meadowbank Park, Adelaide Street, Meadowbank  
**Cost** Free  
**Ages** Primary School aged kids

**Bookings** Essential, call 9952 8222  
**More info** [www.ryde.nsw.gov.au/bikeweek](http://www.ryde.nsw.gov.au/bikeweek)

#### Learn to Skate Clinics

The clinic aims to get beginners into skateboarding and develop the skills of those already riding. Session will be taught by qualified and experienced skate instructors.

**When** Wednesday 24 September  
**Time** Session 1: 9.45am - 12 noon, Session 2: 12.15 - 2.30pm  
**Where** Meadowbank Park, Adelaide Street, Meadowbank  
**Cost** \$10 per child (cash payment on the day)  
**Ages** Primary School aged kids  
**Bookings** Essential, call 9952 8222

#### Go4Fun School Holiday Activity

The Go4Fun program features a range of sports and fun activities to help children and families develop healthy eating habits, build self-confidence and become more active.

**When** Thursday 25 September at Eastwood Park, Lakeside Rd, Eastwood and Thursday 2 October at Monash Park, Ryde Road, Gladesville

**Time** 10.00am - 12.30pm  
**Cost** Free  
**Bookings** Essential, call 9952 8222

#### AFL School Holiday Clinics

Children will participate in a variety of skills, fun activities and modified games designed to teach beginners the fundamentals of skill development or challenge those who have a passion for playing AFL. Includes BBQ lunch and a drink.

**When** Tuesday 30 September and Wednesday 1 October  
**Time** 9.00am - 2.30pm  
**Where** ELS Hall, Kent Road, North Ryde  
**Cost** \$100 for both days or \$60 for 1 day (cash or cheque payable on the day)

**Bookings** Essential, call 9952 8222

### Our Space Integrated Youth Hub presents

Our Space is hosting activities for kids aged 11 - 18 years at 167 Shaftsbury Road, Eastwood. For more information or to book call 9874 7458 or 9876 3543.

#### Girls Pamper Day

Monday 22 September, and Monday 29 September, 11.00am - 1.00pm

#### Movies @ Top Ryde

Tuesday 23 September, 10.00am - 3.00pm

#### Eclectic Art Program - Mixed Medium

Wednesday 24 September and Wednesday 1 October, 10.00am - 12.30pm

#### Putt Putt

Wednesday 24 September and Wednesday 1 October, 1.00 - 1.30pm

#### Song writing workshop and BBQ

Tuesday 30 September, 11.00am - 3.00pm

#### Sports Day @ Stars Sport Centre

Thursday 25 September and Thursday 2 October, 11.00am - 3.00pm

### Ryde Aquatic Leisure Centre presents

#### Surf Ryder

Regardless of your skill level, you can ride a small 2 foot roller, to a 6ft tube. The Surf Ryder is suitable for kids as young as seven, through to teenagers, adults and the young at heart.

**Cost** \$17.50 for half hour (includes pool entry).  
**Bookings** Essential, call 8878 5111

#### Learn to Swim Holiday Intensive Program

Consecutive days of 'Learn to Swim' lessons rapidly develop skills and confidence in swimmers. 30 minute classes are held each day 8.00am - 12 noon.

**When** Monday 22 September - Friday 3 October  
**Where** 504 Victoria Road, Ryde  
**Cost** From \$17.50 per person

#### Fun in the pools!

The wave pool, inflatables and giant slide operate daily from 10.00am throughout the school holidays and you might also like to try out our new fun features: the rainbow water arches and tipping buckets.

**When** Monday 22 September - Sunday 5 October  
**Cost** Kids 5 - 16 years \$5.60, kids under 4 Free

#### Ryde Aquatic Leisure Centre

**Where** 504 Victoria Road, Ryde  
**Phone** 8878 5111

**More info** [www.ryde.nsw.gov.au/ralc](http://www.ryde.nsw.gov.au/ralc)

*Securing Our future*

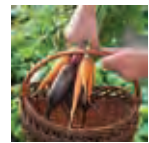
**Community Council Meeting**  
Find out more about your rates and the City's future  
7.30 - 9.00pm at Eastwood Community Hall  
159-161 Shaftsbury Road, Eastwood

Register your interest in attending by:  
✉ [future@ryde.nsw.gov.au](mailto:future@ryde.nsw.gov.au) [www.futureryde.com.au](http://www.futureryde.com.au) 9952 8222

## Around the City

### Healthy & Sustainable Living at Home

City of Ryde will celebrate National Sustainable House Day with this informative and action packed talk and tour. Learn practical tips from experts on how to grow your own food, save money, water and energy and smart renovation ideas, for a healthy and sustainable lifestyle!



**When** Sunday 14 September  
**Time** 12.00 - 4.30pm  
**Where** Starts at West Ryde Community Hall  
**Cost** Free  
**Bookings** Essential, call 9952 8222 or email [cityofryde@ryde.nsw.gov.au](mailto:cityofryde@ryde.nsw.gov.au)

### Ryde Rivers Festival 2014

The Festival will provide a fun day for the whole family and includes: Dragon boat racing 1km dash, 5km and 10km fun run and walk events, Kids' Olympics, amusement rides, vintage car exhibition, food and merchandise stalls and live entertainment. For more info go to [www.ryderiversfestival.com](http://www.ryderiversfestival.com)



**When** Sunday 14 September  
**Time** 8am - 4pm  
**Where** Kissing Point Park, Waterview Street, Putney

### Composting and Worm Farming Workshop

Get advice on how to set up your own compost bin or worm farm so you can reduce your rubbish output by up to 50%, save water and money whilst nourishing your plants. Light refreshments will be provided for morning tea.



**When** Saturday 20 September  
**Time** 10.00am - 12 noon  
**Cost** Free  
**Bookings** Essential, call 9952 8222

## Upcoming Library Events

### Ryde Remembers: Ryde's boys, Part 2

Over 2,000 men enlisted from the Ryde and Eastwood areas during WWI. 300 of them never came home. Come along and listen to members of the Ryde District Historical Society as they recount the stories of some of those boys.



**When** Thursday 11 September  
**Time** 6.00 - 8.00pm  
**Where** Ryde Library  
**Cost** Gold coin contribution  
**Bookings** 9952 8352

### InFocus: Personal Tour of the Titanic

The story of this renowned vessel remains utterly compelling. Researcher Andrew Rogers was the first Australian to dive the Titanic and will reveal some less well known facts about the wreck and its history in this seminar.



**When** Wednesday 17 September  
**Time** 6.30 - 7.30pm  
**Where** Ryde Library  
**Cost** Gold coin contribution  
**Bookings** 9952 8352

### Authors Platform: Caroline Overington

Join us for an interview with novelist Caroline Overington, who will tell us more about her latest book titled *Can you keep a secret?*



**When** Thursday 25 September  
**Time** 6.30 - 7.30pm  
**Where** Ryde Library  
**Cost** Gold coin contribution  
**Bookings** 9952 8352

## Have Your Say

### Buffalo and Kittys Creek Floodplain Risk Management Study

Council, through its Floodplain Management Committee, has completed the Draft Flood Study and Draft Floodplain Risk Management Study & Plan for the Buffalo and Kittys Creek stormwater drainage catchments. These reports are being exhibited for community comments from 10 September 2014 to 3 October 2014.

The reports are available for viewing at:

- City of Ryde Customer Service Centre, 1 Devlin Street, Ryde (Monday-Friday, 8.30am - 4.30pm)
- North Ryde Library, 201 Coxs Road, North Ryde (During branch hours)

• [www.ryde.nsw.gov.au/haveyoursay](http://www.ryde.nsw.gov.au/haveyoursay)

#### Community Drop-In Session:

We invite you to visit the project booth on Thursday 25 September 2014, 3.30 - 7.30pm, at North Ryde Library (201 Coxs Road, North Ryde), where you can discuss the reports and any issues with project representatives.

Submissions must be in writing and marked as 'Buffalo and Kitty's Creek' with your name, address of interest, telephone and written under the headings of:

- Comments on the reports and proposed management options
- Other measures which could be investigated
- General Comments

Submissions can be made:

- Online: [www.ryde.nsw.gov.au/haveyoursay](http://www.ryde.nsw.gov.au/haveyoursay)
  - By Email: [cityofryde@ryde.nsw.gov.au](mailto:cityofryde@ryde.nsw.gov.au)
  - By Post: General Manager, City of Ryde, Locked Bag 2069, North Ryde NSW 1670
- Closing date for submissions is 4.30pm Friday 3 October 2014. For more information call Customer Service on 9952 8222.

## Development Applications Received

Council has received the following Local Development Applications.  
**Property:** 120-124a Victoria Road, Gladesville  
**Local Development Application No.:** LDA2014/0379  
**Applicant:** St Peters DMG Developments Pty Ltd  
Demolition of existing buildings and construction of a 6-storey residential flat building. The development will contain a total of 46 apartments and 56 car parking spaces in 2 basement levels.  
**Property:** 35-37 Devlin Street, Ryde  
**Local Development Application No.:** LDA2014/0362  
**Applicant:** Best Living Pty Ltd  
Demolition of buildings and vegetation on site, and construction of a mixed use (commercial/residential) development containing 24 residential units (4 x 1 bed, 16 x 2 bed & 4 x 3 bed) and 2 commercial units.  
Submissions regarding the above applications must be lodged no later than 1 October 2014.

The above applications are not 'designated development' under the terms of the *Environmental Planning & Assessment Act*, and the City of Ryde is the authority responsible for the determination of the applications. Anyone may make submissions concerning these applications. Submissions are required to be in writing. They should be addressed to the General Manager and sent by post, email or fax or delivered in person to the Civic Centre or the Ryde Planning and Business Centre. Should the submission be by way of objection to the proposal, the submission should specify the grounds of objection. The City of Ryde has resolved that all submissions received in relation to rezoning and development applications will be publicly accessible on request. The supply of personal information is voluntary. However if you choose to make an anonymous submission it may be given less weight (or no weight) in the overall consideration of the application.

The above applications and accompanying information may be inspected electronically at the Ryde Planning and Business Centre, 1 Pope Street, Ryde (within Top Ryde City shopping centre) between 9.00am and 5.00pm Monday to Friday during the period in which submissions may be made. (Please note: on the second Thursday of each month the hours are 10.00am to 5.00pm.) To make an appointment go to [www.ryde.nsw.gov.au/planningandbusiness](http://www.ryde.nsw.gov.au/planningandbusiness) or call 9952 8222.

NSW Transport for NSW

**bike week**  
Proudly supported by Transport for NSW

Bring your bike, helmet and comfortable clothing

**Come Ryde with me**  
This is a FREE one-day event that will promote essential bicycle commuting skills for adult cyclists as well as safe techniques for children.

**Saturday 20 September**  
**10.00am - 4.00pm**  
**Meadowbank Park Netball Courts**

Skills gained in the course will be practised on the netball courts and the more advanced riders can do short cycling trips along the new foreshore cycleway that connects Ryde to Gladesville.

Features of the event include:

- Essential skills course for adults from 10.00am - 4.00pm
- 1 hour essential skills courses for kids at 10.00am, 11.15am and 1.30pm
- Safe commuting skills course for adults from 10.00am - 4.00pm
- Free giveaways
- Healthy food and refreshments

**Bookings are essential, call 9952 8222 to reserve your place.**

**For further information go to**  
[www.ryde.nsw.gov.au/bikeweek](http://www.ryde.nsw.gov.au/bikeweek)

City of Ryde  
Lifestyle and opportunity @ your doorstep

**13 - 21 September 2014**

For more information visit  
[transport.nsw.gov.au/cycling/bike-week-2014](http://transport.nsw.gov.au/cycling/bike-week-2014)





## MAYOR'S COMMUNITY MESSAGE

Clr Bill Pickering - Mayor

I am very honoured to have been elected as Mayor of the City of Ryde.

My biggest focus will be to work with all Councillors and staff to put in place the building blocks for creating a sustainable financial future for our city.

In particular I look forward to new and innovative ways to address revenue shortfalls and major backlogs in infrastructure maintenance and renewal.

Our city is unique, with a diverse mix of people, neighbourhoods and thriving business precincts.

The individualism of our city gives us a sense of pride, history and cultural awareness and a sense that Ryde is a place of opportunity for all.

I will work hard to build on all our city has achieved and focus on delivering what is best for the community as a whole.

### Time Management

Just a week into my mayoralty and already my diary has filled up dramatically. Undoubtedly, I will be calling on my military background to prioritise my time.

For anyone in public life or business, be that large or small, time management is one of the keys to success. I am particularly pleased to see that local small business operators are responding enthusiastically to the Small Business September workshops run by the Council which, coincidentally, features a Time Management seminar on Monday 22 September. Other sessions include Budgets and Cash Flow, Customer Service and Public Relations – all subjects imperative to master if you want to run a productive and successful enterprise. You can get more details at [www.cityofrydebusiness.com.au](http://www.cityofrydebusiness.com.au)

### White Balloon Day

One of my first duties as Mayor was to attend a Council staff fund raising morning tea in support of White Balloon Day, the flagship event of the Bravehearts organisation. I wholeheartedly support this organisation and their awareness campaign to make Australia the safest place in the world to raise a child. Child protection is a delicate and difficult subject to broach but one that we need to step forward and showcase for the sake of all children. For details go to [www.bravehearts.org.au](http://www.bravehearts.org.au)



Bravehearts guest speaker Amanda McGregor and Mayor Pickering

In closing, I would like to thank all those members of the community who have left messages of congratulations on my election as Mayor. What an honour it is to service this great community and I look forward to meeting many of you in coming weeks and months.

Sincerely,

Clr Bill Pickering - Mayor

Phone: Office of the Mayor 9952 8222.

Email: [mayor@ryde.nsw.gov.au](mailto:mayor@ryde.nsw.gov.au)

To view the weekly Mayor's Message go to [www.ryde.nsw.gov.au/Mayor](http://www.ryde.nsw.gov.au/Mayor)

## UPCOMING LIBRARY EVENTS

### InFocus: Personal Tour of the Titanic

The story of this renowned vessel remains utterly compelling. Researcher Andrew Rogers was the first Australian to dive the Titanic and will reveal some less well known facts about the wreck and its history.



**When** Wednesday 17 September  
**Time** 6.30 - 7.30pm  
**Where** Ryde Library  
**Cost** Gold coin contribution  
**Bookings** 9952 8352

### InFocus: State Emergency Services (SES)

Storm and flood damage are common problems. The State Emergency Services (SES) present this session on what to do and who to call.



**When** Wednesday 24 September  
**Time** 2.00 - 3.00pm  
**Where** West Ryde Library  
**Cost** Gold coin contribution  
**Bookings** 9952 8376

### Authors Platform: Caroline Overington

Join us for an interview with novelist Caroline Overington, who will tell us more about her latest book titled *Can you keep a secret?*



**When** Thursday 25 September  
**Time** 6.30 - 7.30pm  
**Where** Ryde Library  
**Cost** Gold coin contribution  
**Bookings** 9952 8352

## SCHOOL HOLIDAY ACTIVITIES

### Digging Dinosaurs Workshop

Come face to face with T-Rex and check out a life size replica of a Velociraptor dinosaur skull! In this awesome workshop for ages 7 and up, you can dig up dino bones, analyse specimens and learn about the monsters of the past. Payment must be made prior to the day.



**When** Wednesday 24 September  
**Time** 10.00 - 11.00am & 11.30am - 12.30pm  
**Where** West Ryde Community Hall 3 - 5 Anthony Rd, West Ryde  
**Cost** \$10 per child  
**Bookings** Essential. Call 9952 8352

### Learn to Skate Clinics

The clinic aims to get beginners into skateboarding and develop the skills of those already riding. Session will be taught by qualified and experienced skate instructors. For primary school aged kids.



**When** Wednesday 24 September  
**Time** Session 1: 9.45am - 12 noon, or Session 2: 12.15 - 2.30pm  
**Where** Meadowbank Park, Adelaide Street, Meadowbank.  
**Cost** \$10 per child  
**Bookings** Essential. Call 9952 8352

### Surf Ryder at the RALC

Regardless of your skill level, you can ride a small 2 foot roller, to a 6ft tube. The Surf Ryder is suitable for kids as young as seven, through to teenagers, adults and the young at heart.

**Where** Ryde Aquatic Leisure Centre, 504 Victoria Rd, Ryde  
**Cost** \$17.50 for half hour (includes pool entry)  
**Bookings** Essential. Call 8878 5111

For more activities go to [www.ryde.nsw.gov.au/schoolholidays](http://www.ryde.nsw.gov.au/schoolholidays)

## NSW BIKE WEEK



Bring your bike, helmet and comfortable clothing

## Come Ryde with me

This is a FREE one-day event that will promote essential bicycle commuting skills for adult cyclists as well as safe techniques for children.

**Saturday 20 September**  
**10.00am - 4.00pm**  
**Meadowbank Park Netball Courts**

Skills gained in the course will be practised on the netball courts and the more advanced riders can do short cycling trips along the new foreshore cycleway that connects Ryde to Gladesville.

Features of the event include:

- Essential skills course for adults from 10.00am - 4.00pm
- 1 hour essential skills courses for kids at 10.00am, 11.15am and 1.30pm
- Safe commuting skills course for adults from 10.00am - 4.00pm
- Free giveaways
- Healthy food and refreshments

**Bookings are essential, call 9952 8222 to reserve your place.**

For further information go to [www.ryde.nsw.gov.au/bikeweek](http://www.ryde.nsw.gov.au/bikeweek)



For more information visit [transport.nsw.gov.au/cycling/bike-week-2014](http://transport.nsw.gov.au/cycling/bike-week-2014)

## SECURING OUR FUTURE



**SEPT Thursday 18**  
**Find out more about your rates and the City's future**  
**7.30 - 9.00pm**  
**Eastwood Community Hall, 159-161 Shaftsbury Rd, Eastwood**

Register your interest in attending by:

✉ [future@ryde.nsw.gov.au](mailto:future@ryde.nsw.gov.au)

💻 [www.futureryde.com.au](http://www.futureryde.com.au)

☎ 9952 8222

## HAVE YOUR SAY

### 144 Wicks Road, Macquarie Park Planning Proposal

Masters Home Improvements has lodged a planning proposal with Council for 144 Wicks Road, Macquarie Park which seeks to allow the B7 Business Park part of the site fronting Epping Road to be used for 'hardware and building supplies' and 'garden centre'. If approved, this will allow for the future redevelopment of the site to provide for a Masters. The planning proposal and other information will be on exhibition from Wednesday 17 September to Friday 17 October 2014.

The planning proposal and supporting documents are available for viewing at:

- Ryde Planning and Business Centre - 1 Pope Street, Ryde (Monday - Friday, 9.00am - 5.00pm)
- Ryde Library, 1 Pope Street, Ryde (During branch hours)
- North Ryde Library, 201 Cox's Road, North Ryde (During branch hours)
- [www.ryde.nsw.gov.au/haveyoursay](http://www.ryde.nsw.gov.au/haveyoursay)

**Council will also be hosting two community drop-in sessions:**

**Where:** North Ryde School of Arts Hall  
**When:** Saturday, 27 September 2014  
**Time:** 10.00am - 12.00pm  
**Where:** North Ryde Library  
**When:** Thursday, 2 October 2014  
**Time:** 5.30 - 7.30pm

Submissions must be in writing and marked '144 Wicks Road Planning Proposal'

- Online: [www.ryde.nsw.gov.au/haveyoursay](http://www.ryde.nsw.gov.au/haveyoursay)
- By Email: [cityofryde@ryde.nsw.gov.au](mailto:cityofryde@ryde.nsw.gov.au)
- By Post: General Manager, City of Ryde, Locked Bag 2069, North Ryde NSW 1670

Closing date for submissions is 4.30pm Friday, 17 October.

It is Council's policy that all submissions will be publicly accessible on request. Supply of personal information is voluntary, however anonymous submissions may be given less weight.

For more information call Customer Service on 9952 8222.

## PLANNING MATTERS

### The City of Ryde has a new comprehensive local environment plan (Ryde LEP 2014).

After seven years of preparations, consultations and reviews, the City of Ryde's new LEP 2014 was notified on the NSW legislation website on Friday 12 September 2014 and came into force on that day. The new Ryde Development Control Plan DCP 2014 also came into effect. Key changes incorporated in LEP 2014 include:

- Strata subdivision of dual occupancy developments
- Amended development controls for the erection of dual occupancy and multi dwelling house developments, including a minimum lot width of 20 metres.
- New clauses relating to flooding, environmental sustainability and stormwater quality control
- Rezoning of some land adjoining three Town Centres (Ryde, Eastwood and West Ryde) to better incorporate the sites into the town centres
- Changes to floor space and height controls for Meadowbank and West Ryde Town Centres.

The new LEP and DCP apply to any development applications lodged since Friday 12 September 2014. DAs lodged prior to this date, which have not yet been determined by Council, will be governed by the previous Ryde LEP 2010. To view the new documents, go to [www.ryde.nsw.gov.au/planningcontrols](http://www.ryde.nsw.gov.au/planningcontrols)

## DEVELOPMENT APPLICATIONS RECEIVED

Council has received the following Local Development Applications.

**Property:** 64 Bridge Road, Ryde (Santa Rosa Park)

**Local Development Application No.:** LDA2014/0394

**Applicant:** Graham Bakewell Architect

Installation of a community nursery, flood protection wall, shade structure and new amenities building for the purpose of community facilities - Santa Rosa Park.

**Property:** 7-11 Smith Street, Ryde

**Local Development Application No.:** LDA2014/0378

**Applicant:** Glendinning Minto & Associates Pty Ltd

Amalgamation of 3 lots and construction of a residential flat building consisting of 35 apartments - 7 x 1 bedroom, 26 x 2 bedroom, and 2 x 3 bedroom units. Two levels of basement parking are also proposed for 49 car parking spaces. Submissions regarding the above applications must be lodged no later than 1 October 2014.

**Property:** 8 Deakin Street, West Ryde

**Local Development Application No.:** LDA2014/0385

**Applicant:** Stuart Frenia

New multi-dwelling housing (attached) containing 3 units - 1 x 5 bedroom two storey unit at the front and 2 x 3 bedroom single storey units at the rear and strata subdivision. Submissions regarding the above application must be lodged no later than 8 October 2014.

The above applications are not 'designated development' under the terms of the *Environmental Planning & Assessment Act*, and the City of Ryde is the authority responsible for the determination of the applications. Anyone may make submissions concerning these applications. Submissions are required to be in writing. They should be addressed to the General Manager and sent by post, email or fax or delivered in person to the Civic Centre or the Ryde Planning and Business Centre. Should the submission be by way of objection to the proposal, the submission should specify the grounds of objection. The City of Ryde has resolved that all submissions received in relation to rezoning and development applications will be publicly accessible on request. The supply of personal information is voluntary. However if you choose to make an anonymous submission it may be given less weight (or no weight) in the overall consideration of the application.

## UPCOMING COUNCIL MEETING



**Council Meeting**  
7.30pm Council Chambers, 6th Floor, Ryde Civic Centre, 1 Devlin Street, Ryde.

City of Ryde provides live streaming and archives of Council Meetings, go to [www.ryde.nsw.gov.au/councilmeetingslive](http://www.ryde.nsw.gov.au/councilmeetingslive)

## PUBLIC NOTICE BOARD

### New Mobile Site

Council's online services are now even easier to access through our new mobile website.

Our most popular services like paying your rates, reporting graffiti, searching the library catalogue or checking the sports ground wet weather status have been optimised for your mobile.

To access these mobile-friendly services, simply go to [www.ryde.nsw.gov.au](http://www.ryde.nsw.gov.au) from your mobile device.



### Cinema in the Plaza

Grab a chair, a cushion or a rug and come along to our free Cinema in the Plaza event - watch 'Frozen' PG under the arbour at Eastwood Plaza. This movie has subtitles for the deaf and hearing impaired community.

**When** Friday 19 September  
**Time** Movie starts at approximately 8.00pm

**Where** Eastwood Plaza, Rowe Street, Eastwood

**More info** [www.ryde.nsw.gov.au/cinema](http://www.ryde.nsw.gov.au/cinema)



### SecondHand Saturday Garage Sale

The next Council Cleanup is for residents living in **Zone 10** this **Monday 22 September**.

Why not hold a garage sale prior to your cleanup and prevent re-usable items going to landfill as well as put cash in your pocket!

City of Ryde will advertise your garage sale in the local press and on our website on the Wednesday prior to the event. Simply register 10 business days in advance at [www.ryde.nsw.gov.au/secondhandsaturday](http://www.ryde.nsw.gov.au/secondhandsaturday)

This week's Garage Sale Locations for Saturday 20 September from 9.00am: **28 Elliot Avenue, East Ryde**



Dominic Johnson  
A/General Manager

Ryde Civic Centre, 1 Devlin Street, Ryde NSW 2112  
Locked Bag 2069, North Ryde NSW 1670  
[www.ryde.nsw.gov.au](http://www.ryde.nsw.gov.au)

Customer Service 9952 8222  
TTY 9952 8470  
Email: [cityofryde@ryde.nsw.gov.au](mailto:cityofryde@ryde.nsw.gov.au)

## Let's connect ....



Your local Councillors  
For more details go to [www.ryde.nsw.gov.au](http://www.ryde.nsw.gov.au)

Clr Bill Pickering, Mayor  
Ph: 99528332  
[mayor@ryde.nsw.gov.au](mailto:mayor@ryde.nsw.gov.au)

Clr Denise Pendleton  
Ph: 9877 6658  
[dpendleton@ryde.nsw.gov.au](mailto:dpendleton@ryde.nsw.gov.au)

Clr Jeff Salvestro-Martin  
Ph: 0413 043 423  
[salvestro-martin@ryde.nsw.gov.au](mailto:salvestro-martin@ryde.nsw.gov.au)

Clr Sarkis Yedelian OAM  
Ph: 8004 5053 or 0412 048 330  
[sarkis@yedelian.com](mailto:sarkis@yedelian.com)

Clr Roy Maggio, Deputy Mayor  
Ph: 0418 299 347  
[rmaggio@ryde.nsw.gov.au](mailto:rmaggio@ryde.nsw.gov.au)

Clr Craig Chung  
Ph: 0412 605 597  
[cchung@ryde.nsw.gov.au](mailto:cchung@ryde.nsw.gov.au)

Clr George Simon  
Ph: 0468 478 086  
[gsimon@ryde.nsw.gov.au](mailto:gsimon@ryde.nsw.gov.au)

Clr Artin Etmekdjian  
Ph: 0418 248 821  
[artine@ryde.nsw.gov.au](mailto:artine@ryde.nsw.gov.au)

Clr Jerome Laxale  
Ph: 0426 273 289  
[jlaxale@ryde.nsw.gov.au](mailto:jlaxale@ryde.nsw.gov.au)

Clr Justin Li  
Ph: 0412 614 174  
[jli@ryde.nsw.gov.au](mailto:jli@ryde.nsw.gov.au)

Clr Terry Perram  
Ph: 9874 7904  
[tperram@ryde.nsw.gov.au](mailto:tperram@ryde.nsw.gov.au)



# City of Ryde WEEKLY CITY NEWS

City news for Ryde, North Ryde, East Ryde, West Ryde, Chatswood West, Denistone, Denistone East, Denistone West, Eastwood, Gladesville, Macquarie Park, Marsfield, Meadowbank, Melrose Park, Putney and Tennyson Point.



## MAYOR'S COMMUNITY MESSAGE

Cllr Bill Pickering - Mayor

### Community transport

I was honoured to attend the Ryde Hunters Hill Community Transport annual general meeting last week, along with my counterpart, Hunters Hill Mayor Richard Quinn.

We met with the CEO of the organisation's peak body, the President of RHHCT, Ryde Councillor Artin Etmekdjian, senior managers and committee members, who gave an overview of the association's achievements and challenges.

This organisation has a rich history of serving our community for nearly three decades, providing transport services to frail aged and younger disabled residents and carers living in the Ryde and Hunters Hill areas who have no transport or are unable to access public transport. Not only do they provide a door-to-door service for medical appointments and shopping, they also conduct an extensive program of social outings ensuring that all people get out to enjoy themselves, and fully participate in the life of our community. More details at [www.ryde.nsw.gov.au/community](http://www.ryde.nsw.gov.au/community).

### What the new LEP means to you

A new comprehensive local environment plan (LEP) for the City of Ryde came into effect recently. This is the city's principal planning tool applying to the land in the Ryde local government area, to control development, regulate land use and help determine planning decisions.

One of the changes that will have most impact on residents relates to the replacement of a control called 'linear separation' which affects where dual occupancy development can be located in the city. More details at [www.ryde.nsw.gov.au/planningcontrols](http://www.ryde.nsw.gov.au/planningcontrols).

### Surf Ryder

The Spring school holidays are always eagerly anticipated by school kids. But sometimes parents simply run out of ideas of how to keep their children occupied. The new Surf Ryder real-wave simulator at the Ryde Aquatic Leisure Centre on Victoria Road is one activity that will keep them fully occupied. Surf Ryder can be enjoyed by children from seven years and over and it doesn't matter if they're beginners or little grommets. All rides are fully supervised by experienced instructors and wipe-outs resemble landing on a soft mattress. Cost is \$17.50 for half hour which also includes pool entry, so when the kids have finished surfing, they can jump in the pool for more fun. Phone 8878 5111 to make a booking.

### Count down to Granny Smith

It's just a little over three weeks to the Granny Smith Festival and action behind the scenes is running at full pitch. It's hard to believe that such a small team pulls off one of the biggest and most successful community festivals in our State. Last year around 90,000 people flooded Eastwood town centre to enjoy 'all the fun of the fair' at this family-friendly event with its street parade, food of every flavour, festival stalls, entertainment, fireworks and concert. I'm looking forward to taking part in the official opening ceremony. So please come along and say hello in Eastwood on Saturday 18 October.

Sincerely,

Cllr Bill Pickering - Mayor

Phone: Office of the Mayor 9952 8222

Email: [mayor@ryde.nsw.gov.au](mailto:mayor@ryde.nsw.gov.au)

To view the weekly Mayor's Message go to

[www.ryde.nsw.gov.au/Mayor](http://www.ryde.nsw.gov.au/Mayor)

## UPCOMING LIBRARY EVENTS

### InFocus: State Emergency Services (SES)

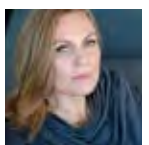
Storm and flood damage are common problems. The State Emergency Services (SES) present this session on what to do and who to call.



**When** Wednesday 24 September  
**Time** 2.00 - 3.00pm  
**Where** West Ryde Library  
**Cost** Gold coin contribution  
**Bookings** 9952 8376

### Authors Platform: Caroline Overington

Join us for an interview with novelist Caroline Overington, who will tell us more about her latest book titled *Can you keep a secret?*



**When** Thursday 25 September  
**Time** 6.30 - 7.30pm  
**Where** Ryde Library  
**Cost** Gold coin contribution  
**Bookings** 9952 8352

### Tea and Talks: County of Cornwall

Light refreshments provided.



**When** Monday 29 September  
**Time** 10.00am - 12noon  
**Where** West Ryde Library  
**Cost** Gold coin contribution

### Authors Platform: Meredith Kirton

A treat for garden lovers! Meet City of Ryde Spring Garden Competition ambassador Meredith Kirton as she tells us more about her new guide to seasonal gardening, *Dig Deeper*.



**When** Thursday 2 October  
**Time** 6.30 - 7.30pm  
**Where** Ryde Library  
**Cost** Gold coin contribution  
**Bookings** 9952 8352

### InFocus: Family Law and how the family court view vaccinations

Lydia Shelly, from Lawyers Osborne Howell Pty Ltd will talk on Family Law and how the family court view vaccinations.



**When** Wednesday 8 October  
**Time** 2.00 - 4.00pm  
**Where** Ryde Library  
**Cost** Gold coin contribution  
**Bookings** 9952 8352

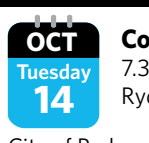
## SMALL BUSINESS SEPTEMBER

### Setting up a Home Business

Interested in running a business from home? This workshop will provide practical advice on council regulations regarding setting up your home office or business.

**When** Tuesday 30 September  
**Time** 6.15 - 7.30pm  
**Where** Wallummetta Room, Ryde Library  
**Bookings** Essential. [www.cityofrydebusiness.com.au](http://www.cityofrydebusiness.com.au)

## UPCOMING COUNCIL MEETING



**Council Meeting**  
7.30pm Council Chambers, 6th Floor,  
Ryde Civic Centre, 1 Devlin Street, Ryde.

City of Ryde provides live streaming and archives of Council Meetings, go to [www.ryde.nsw.gov.au/councilmeetingslive](http://www.ryde.nsw.gov.au/councilmeetingslive)

## SCHOOL HOLIDAY ACTIVITIES

### RAWR! Dinosaur!

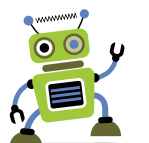
In this workshop for ages 5 and up, you can become a dinosaur, with sharp teeth and lots of claws.



**When** Monday 29 September  
**Time** 11.00am - 12noon  
**Where** North Ryde Library,  
201 Cox's Road, North Ryde  
**Cost** \$3.00 per child  
**Bookings** Essential. Call 9952 8352

### Meet Gizmo

In this workshop for ages 5 and up, meet and make your own gizmo the robot.



**When** Wednesday 1 October 2014  
**Time** 11.00am - 12noon  
**Where** North Ryde Library,  
201 Cox's Road, North Ryde  
**Cost** \$3.00 per child  
**Bookings** Essential. Call 9952 8352

### Fun in the RALC pools!

The wave pool, inflatables and giant slide operate daily throughout the school holidays and you might also like to try out our new fun features: the rainbow water arches and tipping buckets.



**When** Until Sunday 5 October  
**Time** From 10.00am  
**Where** Ryde Aquatic Leisure Centre,  
504 Victoria Rd, Ryde  
**Cost** Children aged 5 - 16 years \$5.60,  
children under 4 are free.

For more activities go to:

[www.ryde.nsw.gov.au/schoolholidays](http://www.ryde.nsw.gov.au/schoolholidays)

## PLANNING MATTERS

### VOLUNTARY PLANNING AGREEMENT RECEIVED

Council has received the following Voluntary Planning Agreement.

**Property:** 10 Byfield Road, Macquarie Park  
**Local Development Application No.:** LDA2013/0522  
**Applicant:** Pro-Invest Australian Hospitality Opportunity (ST) Pty Ltd  
**atf Pro-Invest Australian Hospitality Opportunity Trust 1**  
Voluntary Planning Agreement: The above application was granted deferred commencement approval on 26 June 2014 subject to the Council and the Developer entering into a Voluntary Planning Agreement (VPA) pursuant to Section 93F of the Environmental Planning and Assessment Act (Act) consistent with an offer from the Developer that accompanied development application LDA2013/0522 to provide certain public benefits. Under the Act, developers may contribute works, money or land to the local community as part of their development. The VPA sets out what contributions the developer intends to make to the local community. Submissions regarding the above Voluntary Planning Agreement must be lodged no later than 22 October 2014.

The above VPA is not 'designated development' under the terms of the Act, and the City of Ryde is the authority responsible for the determination of the VPA. Anyone may make submissions concerning this VPA. Submissions are required to be in writing. They should be addressed to the General Manager and sent by post, email or fax or delivered in person to the City of Ryde's website at [www.ryde.nsw.gov.au](http://www.ryde.nsw.gov.au) or at the Ryde Planning and Business Centre, 1 Pope Street, Ryde (within Top Ryde City shopping centre) between 9.00am and 5.00pm Monday to Friday during the period in which submissions may be made. (Please note: on the second Thursday of each month the hours are 10.00am to 5.00pm.) To make an appointment go to [www.ryde.nsw.gov.au/planningandbusiness](http://www.ryde.nsw.gov.au/planningandbusiness) or call 9952 8222.

### DEVELOPMENT APPLICATIONS DETERMINED

The following Development Applications and Complying Development Applications were determined in the period 26/07/2014 to 24/08/2014. Notice is hereby given in accordance with Section 101 of the *Environmental Planning and Assessment Act, 1979* of the determination of the following Development Applications. These consents/refusals are available for public inspection without charge.

#### Central Ward Approved

CDA2014/0016

7 Ford St NORTH RYDE

Demolition.

LDA2013/0427

111 Bowden St RYDE

Extension to hall and new outdoor learning area - Italian Bilingual School.

LDA2014/0076

6 Grand Ave WEST RYDE

Demolition, new dual occupancy.

LDA2014/0201

46 Bowden St RYDE

New dual occupancy.

LDA2014/0213

309 Morrison Rd RYDE

New dual occupancy.

LDA2014/0230

30 Ronald Ave RYDE

New dual occupancy.

LDA2014/0235

16 Church St RYDE

Garbage room to rear of restaurant.

LDA2014/0254

Chefs Gallery Shop

407/197-223 Herring Rd MACQUARIE PARK

Use and fitout of shop 407

Macquarie Shopping Centre as a licenced restaurant - Chefs Gallery.

LDA2014/0259

13 Yerong St RYDE

Raising of garage roof to create attic/loft area.

LDA2014/0264

28 Griffiths Ave WEST RYDE

New inground swimming pool.

LDA2014/0268

6 Pratten Ave RYDE

New dual occupancy.

LDA2014/0277

7 Primrose Ave RYDE

Awning to rear of dwelling.

LDA2014/0281

33 Flinders Rd NORTH RYDE

Alterations and additions to dwelling.

LDA2014/0294

66 North Rd DENISTONE EAST

New 1.2m high front and return fence.

LDA2014/0298

20 Beverley Cr MARSFIELD

Alterations and additions to dwelling.

LDA2014/0173

26 Warwick St NORTH RYDE

New two storey dwelling.

#### MOD2014/0093

Macquarie Shopping

Centre 197-223 Herring Rd

MACQUARIE PARK

Section 96 for minor internal alterations, new storage & carwash bays and revised parking layout.

MOD2014/0096

16 Wandoo Ave RYDE

Section 96 to modify retaining walls & ground levels.

MOD2014/0108

84 Mons Ave WEST RYDE

Section 96 to add deck between stairs and enlarge front deck.

MOD2014/0110

7 Dora St MARSFIELD

Section 96 to modify window and relocate rainwater tank.

MOD2014/0119

89 Eastview Ave NORTH RYDE

Section 96 to amend Arborist report.

East Ward Approved

CDA2014/0014

35 Numa Rd NORTH RYDE

Demolition.

CDA2014/0020

9 Donnelly St PUTNEY

Demolition.

LDA2013/0273

13 Avon Rd NORTH RYDE

Convert commercial floor space into two units.

LDA2014/0009

31 Baird Ave RYDE

New dual occupancy.

LDA2014/0044

68 Champion Rd TENNYSON POINT

Alterations and additions to dwelling.

LDA2014/0046

18 River Ave CHATSWOOD WEST

Demolition, new two storey dwelling.

LDA2014/0160

7 Irvine Cr RYDE

New dual occupancy.

LDA2014/0161

10 Callaghan St RYDE

Demolition, new two storey dwelling.

LDA2014/0168

2 Orient St GLADESVILLE

Demolition, new dual occupancy.

LDA2014/0173

26 Warwick St NORTH RYDE

New two storey dwelling.

LDA2014/0192

72 Wicks Rd NORTH RYDE

New dual occupancy.

LDA2014/0204

25 Charles St RYDE

New dual occupancy.

LDA2014/0208

200 Cressy Rd NORTH RYDE

New dual occupancy.

LDA2014/0217

15 Small St PUTNEY

Inground swimming pool.

LDA2014/0224

36 Kemp St TENNYSON POINT

New two storey dwelling.

LDA2014/0229

18A Farrington Pde NORTH RYDE

New two storey dwelling.

LDA2014/0238

27-37 Delhi Rd NORTH RYDE

Temporary hoarding fence and real estate signage.

LDA2014/0245

3 Koorong St MARSFIELD

New dual occupancy.

LDA2014/0247

32 Cooney St NORTH RYDE

Demolition of garage, new secondary dwelling, carport & front fence.

LDA2014/0261

299 Lane Cove Rd MACQUARIE PARK

Alterations and internal fitout to ground floor level and new mezzanine level.

LDA2014/0272

40 Ashburn Pl GLADESVILLE

First floor additions to semi-attached dwelling.

LDA2014/0274

1/56 Buffalo Rd GLADESVILLE

Fitout and use of unit 1 for storage and distribution of medical supplies.

LDA2014/0288

1 Wharf Rd GLADESVILLE

Subdivisions to create 3 lots.

LDA2014/0293

32 Elliott Ave EAST RYDE

New two storey dwelling.

MOD2014/0084

33 Frederick St RYDE

Section 96 for internal & external modifications and relocation of OSD tank.

West Ward Approved

CDA2014/0011

72 Waring St MARSFIELD

Relocate internal 2.4m wall.

LDA2013/0406

3 Jackson Cr DENISTONE EAST

Demolition, new two storey dual occupancy.

LDA2014/0041

108 Herring Rd MARSFIELD

Demolition of existing BWS liquor store, new Dan Murphy's liquor store with basement and at grade car parking.

LDA2014/0065

64 Brush Rd WEST RYDE

Demolition



# Securing Our future

## Have you received your 'Securing Your Future' brochure?

To find out more about the proposed rate increase, call Customer Service on 9952 822 or attend a Community Council Meeting to have a conversation with Council staff:



**Community Council Meeting**  
7.30 - 9.00pm  
North Ryde School of Arts,  
201 Coss Rd, North Ryde

Register your interest in attending  
by emailing:



[future@ryde.nsw.gov.au](mailto:future@ryde.nsw.gov.au)



[www.futureryde.com.au](http://www.futureryde.com.au)



9952 8222

 City of Ryde



# Securing Our future

## Have you received your 'Securing Your Future' brochure?

To find out more about the proposed rate increase, call Customer Service on 9952 822 or attend a Community Council Meeting to have a conversation with Council staff:



**Community Council Meeting**  
7.30 - 9.00pm  
Civic Hall  
1 Devlin Street, Ryde

Register your interest in attending  
by emailing:



[future@ryde.nsw.gov.au](mailto:future@ryde.nsw.gov.au)



[www.futureryde.com.au](http://www.futureryde.com.au)



9952 8222

 City of Ryde

# Securing Our future

## Have you had your vote on your rates and the City's future?

Council's community consultation period is coming to a close on 30 September 2014. To find out more, call Customer Service on 9952 8222 or attend the last Community Council Meeting to have a conversation with Council staff:



**Community Council Meeting**  
7.30 - 9.00pm  
Eastwood Hall, 159-161  
Shaftsbury Road, Eastwood

Register your interest in attending by:



[future@ryde.nsw.gov.au](mailto:future@ryde.nsw.gov.au)



[www.futureryde.com.au](http://www.futureryde.com.au)



9952 8222

 City of Ryde

# Securing Our future

 City of Ryde  
Lifestyle and opportunity  
@ your doorstep



Important  
information  
about City of  
Ryde rates and  
services





City of Ryde Mayor  
Clr Roy Maggio

# A message from the Mayor

Council is considering making an application to the Independent Pricing and Regulatory Tribunal (IPART) for a special rate variation to secure funding that our City and community needs for future works and services.

Our aim is to provide the best possible services to the community while remaining financially sustainable into the future.

Council has balanced its budget for many years, but we have now reached a fork in the road and it has become quite clear that we need to change the way we fund our assets and services.

Simply put, general rates revenue is not adequate to keep pace with the increased cost of maintaining assets such as buildings, libraries, parks, sportsgrounds and open areas or our infrastructure such as roads, footpaths, cycleways, seawalls and drainage to a modern standard.



Over the past ten months, we have undertaken community consultations to understand your feelings about the City of Ryde and to identify which services you value the most. This has helped us to strike a balance between the condition of assets you expect, the quality level of community services you need and want, and those you would be willing to see reduced.

Through a combination of telephone surveys, focus groups and community workshops, the message that you 'love living' in the City of Ryde is stronger than ever. Most residents did not want to see cuts to services and public works due to funding shortfalls. In fact, people expressed a willingness to see an increase in rates to maintain or improve the services and amenities they value, so long as the increase was reasonable.

Based on this feedback, Council has developed three funding options to present to you. These options outline what a realistic increase in funds will mean to you and what it will deliver. These are explained in this booklet.

We are asking you to tell us which of the three options outlined you prefer and we will use the results of your feedback to determine the level of rate increase we may seek from IPART.

Please take the time to read the information in this booklet and tell us your preferred option. Your feedback is important and it will have an impact on how we secure our future.

Clr Roy Maggio,  
Mayor — City of Ryde



# Our City Our Future



Our City's 16 suburbs are spread over 40 square kilometres of land between the Parramatta and Lane Cove Rivers. From quiet neighbourhoods to vibrant town centres, our diverse community enjoys a wide range of leisure facilities, natural landscapes, beautiful parks and cycleways, scenic waterways and areas of historical significance.

The City of Ryde is a wonderful place to live, work, and play. However we are facing financial pressures to maintain our assets and infrastructure to acceptable and safe standards.

To achieve financial sustainability and to manage our assets, infrastructure and services we either need to increase our income by increasing rates or reduce our expenditure by decreasing the level of services and the quality of our infrastructure, which will see our assets decline.

As a Council we believe that we have identified as many efficiencies as possible without significant impacts on the community. The next layer of cuts will have a noticeable impact.

This is why we are asking for feedback from ratepayers on a proposal to apply to IPART for a Special Rate Variation (SRV). The rate increase proposed would apply each year for 4 years and is based on research and earlier community input. We ask you to consider the following three options:

## **Option A: DECLINE IN SERVICES**

Keep rate increases at current levels, but many of our assets and community services will decline due to lack of funds.

## **Option B: MAINTAIN SERVICES**

Moderate increase in rates that will allow Council to repair or replace our assets and infrastructure to an acceptable and safe standard, and maintain current levels of service.

## **Option C: UPGRADE SERVICES**

A higher increase in rates that will boost our City's ability to maintain current levels of service, bring the majority of assets and infrastructure to acceptable levels and maintain the life of community assets.

## What we are asking you to do

### Read on to find out:

- Why we need your feedback on a proposed rate increase and what are the future financial challenges
- What Council has been doing to improve our financial situation and reduce the burden on ratepayers
- What our budget and operational spend is and how we compare to other Sydney councils.

### Understand the proposal:

- Read about the three options you are being asked to consider and why
- Use our calculation tables to understand how each option will impact on your rates
- Contact us on 9952 8222 if you need help understanding this information or if you need this document translated.

### Tell us your preferred option:

- Hearing from you is very important, so we are undertaking a two-month consultation period that will provide you with a variety of ways to get all the information you need to make an informed decision - through this booklet, community meetings, information booths, online discussion boards and a telephone hotline. See details on the back page.
- Once you've decided which option you think is best, tell us.
- **There are three ways to register your choice:**
  - 1) Return the postage-paid postcard included with this booklet
  - 2) Go online to [www.futureryde.com.au](http://www.futureryde.com.au)
  - 3) Attend one of our information sessions or community meetings outlined on the back page of this booklet.

# Our current situation

The City of Ryde prides itself on providing a high level of customer service to more than 110,000 residents.

The Council is responsible for an extensive range of assets, valued at over \$2 billion. These valuable assets are types of infrastructure used by the community every day. They include roads, footpaths, drains, cycleways, buildings, parks, playgrounds, sporting and leisure facilities and natural areas. These assets deteriorate over time and require ongoing maintenance or replacement.

Deteriorating infrastructure is a major issue for local government. In June this year the NRMA released a report that highlighted a \$3.87 billion funding backlog needed to bring NSW council roads up to a satisfactory condition. In 2006, the total infrastructure backlog for all NSW councils was estimated at \$6.3 billion.

Economic and legislative conditions such as rate pegging, service cost shifting from other levels of government, plus increasing costs for materials and utilities, accumulates to further restrict our ability to meet existing and emerging community priorities.

As our population grows, so does the demand for services and the impact on assets increases. However, the pool of money available to Council to maintain these assets does not keep pace with increased costs. The result is a funding gap, a backlog of works and deteriorating assets.

Based on all the information we have, the Council needs \$18 – 20 million per annum to keep our City's infrastructure network at a satisfactory standard. Our budget forecast for next financial year 2014/15 shows an allocation of \$10.38 million for asset renewal works which is a shortfall of \$8.22 million.

Faced with these challenges, Council has first looked at ways to save money and increase income.

## What has Council been doing to improve our financial situation and reduce the burden on ratepayers?

Whilst the City of Ryde has continuously strived to provide efficient and 'best value' services to our community, there has been a concentrated focus over the past 18 months in finding further efficiencies in our delivery of services to the community.

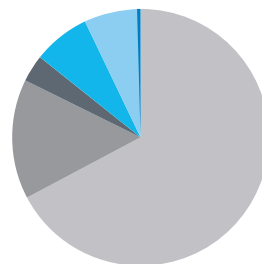
As a result of this review, further cost savings and efficiencies across the organisation amounting to \$2.5 million annually have been identified and are in the process of being implemented.

Council's independent auditor, PricewaterhouseCoopers, advises that further reductions in expenses are not warranted and the issue for Council to consider now is to increase its revenue.

## Our budget

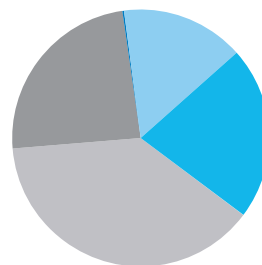
### Where does Council get its revenue and where is it spent?

**2014/15 Income \$98.3M (%'000s)**



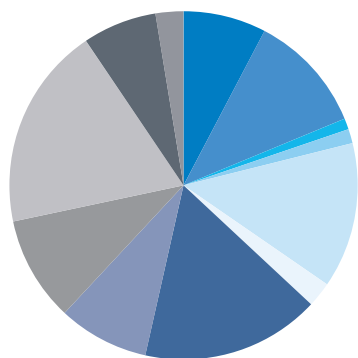
67.0% Rates and Charges .....	66,101
15.0% User Charges and Fees .....	14,825
3.0% Interest .....	3,347
7.0% Other Operating Revenue .....	7,061
7.0% Grants and Contributions (Operating) .....	6,563
1.0% Grants and Contributions (Capital) .....	424

**2014/15 Operating Expenses \$110.9M (%'000s)  
Excludes depreciation \$15.1 M**



38.0% Employee Costs .....	42,666
23.8% Materials & Contracts .....	26,654
0.2% Borrowing Costs .....	234
16.0% Other Operating Expenses .....	17,224
22.0% Capital Expenditure .....	24,171

## 2014/15 Capital Works Expenditure \$24.17M (%’000s)



8% Stormwater program .....	1,858
11% Centres and neighbourhood upgrades .....	2,675
1% Community and cultural events .....	250
1% Foreshore program .....	320
13% Council's technology services .....	3,262
2% Library program .....	564
17% Open space, sport and recreation program .....	4,007
8% Paths and cycleways program .....	2,039
10% Property maintenance program .....	2,352
19% Roads program .....	4,560
7% Traffic & transport program .....	1,661
3% Waste and recycling program .....	624

## Why is Council looking to increase rates now?

To achieve financial sustainability and manage the community's infrastructure, we either need to increase our income by increasing rates, or reduce expenditure by decreasing the level of services we provide to the community.

If NSW councils want to increase rates beyond the 'rate peg' amount they have to apply to IPART for a special rate variation. To do this a council must demonstrate extensive consultation and support from the community.

'Securing our Future' is a two month consultation process Council is conducting with a view to make an application to IPART for a special rate variation commencing in the 2015/16 financial year.

### Has Council applied for a Rate Increase affecting residential properties in the past?

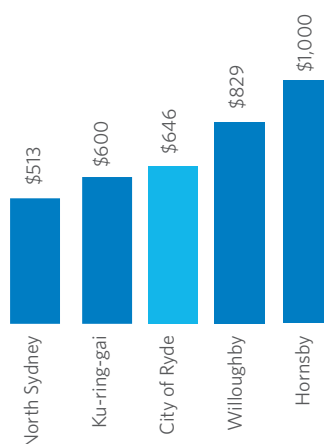
Not in recent years. The last time Council applied for a general residential SRV for infrastructure was in 2005/2006. This was not approved by the then Minister for Local Government. The last approved SRV, for our Council was in 1996/1997.

## How we compare

### How do our rates compare?

For many years our residential rates have been consistently low in comparison to similar sized local councils. Neighbouring councils rates are considerably higher.

#### 2012/13 Average Residential Rates for surrounding councils

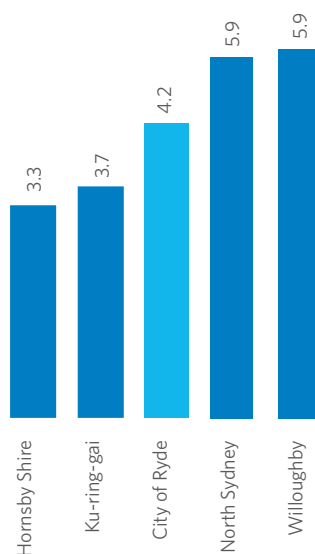


Source: Office of Local Government Comparative Statistics 2012/13

### How do we compare with employee numbers?

The City of Ryde runs an efficient work force, with 4.2 staff per 1,000 residents. Over the past 18 months many staff positions have been consolidated or not replaced, further adding to our financial savings.

#### Ratio of staff per 1,000 residents for surrounding councils



Source: PWC Audit Review - 10 June 2014



# Our Assets, Infrastructure and Services

**Council is responsible for maintaining a large growing infrastructure network including:**

- 321km of roads
- 448km of footpaths
- 250km of drainage with more than 11,000 stormwater pits

**And maintaining community assets like:**

- 55 sportsgrounds
- 94 playgrounds
- 205 hectares of natural areas
- 5 Libraries
- 10 Community Centres and Halls

**Last year we provided 52 direct services and assisted our community in the following ways:**

- 78,000 calls were taken by our Call Centre and 24,882 requests for service
- 716,462 visitors attended our Ryde Aquatic Leisure Centre and over 21,000 free pensioner entries
- 9,723 kids enrolled in a Learn to Swim program
- 65,300 passengers were transported in our community bus
- 11 Bus Stops were upgraded to comply with Disability Standards
- 626 development applications were determined
- 70,000+ bins were serviced each week
- 20,620 tonnes were recycled including green waste
- 101,390 people attended Council-run community events
- 1,493 children were immunised at our immunisation clinic
- 209 Home modification jobs were completed for our seniors
- 946,000+ library visitors with 985,159 items borrowed
- 2.7million+ web page views on our website

## How Council rates the condition of assets

The age of our assets and their regular and growing use means we need to invest in renewal programs to ensure our assets continue to meet community needs and expectations. If Council does not spend money on asset renewal now we will need to invest more money in the future as asset conditions continue to decline. The money spent today on renewing assets will greatly reduce the cost to completely replace our assets in years to come. Council's assets are graded 1 to 5, with the condition 1 'as new' through to condition 5 which is 'considered unsafe to the community.'

Council allocated \$10.38 million for asset renewal in the 2014/15 budget but this still falls short of the extra \$8.22 million required to address assets graded as condition 4 and 5.



**Condition 1**

New or equivalent.



**Condition 2**

Good condition without visible blemishes or deterioration.



**Condition 3**

Usable and safe condition but with visible signs of wear or deterioration.



**Condition 4**

Usable condition with defects that interfere with use or reduce asset life.



**Condition 5**

Requires major repairs or possible safety hazard.



# The options

## What are the options?

Council is considering three possible options for setting its budget based on your preference.

### Option A : DECLINE IN SERVICES

#### Approximate 3% rate peg increase

Option A would be no additional rate increase for the next 4 years, commencing 2015/16 other than the estimated rate peg increase of 3% each year. This would mean no additional investment in local infrastructure or facilities and would therefore lead to a reduction in service levels and possible cuts in services.

### OPTION B : MAINTAIN SERVICES

#### Approximate 7% increase (including rate peg)

Option B would be an average annual 7% rate increase for the next 4 years, commencing 2015/16 (including the rate peg increase of around 3%) to maintain services at their current level, and provide additional money for renewing the City's infrastructure. It would not be sufficient to undertake all repairs and maintenance needed, but would be enough to renew all assets that are rated as 'Condition 5' and **some assets** that are in 'Condition 4.'

### OPTION C : UPGRADE SERVICES

#### Approximate 12% increase (including rate peg)

Option C would be an average annual 12% rate increase for the next 4 years, commencing 2015/16 (including the rate peg increase of around 3%) to maintain services at their current level and provide further money for renewing the City's infrastructure. It would still not be sufficient to undertake all repairs and maintenance needed, but would be enough to renew all assets that are rated as 'Condition 5' and **most assets** that are in 'Condition 4'.

# Maria's story

## An example of how the proposed rate increase could affect ratepayers for a residential dwelling

The land value of Maria's property is \$645,150 and her current rates are \$1,000 for 2014/2015 (excludes domestic waste charge and stormwater levy.)

If Maria preferred to maintain the City's assets and infrastructure network and selected the 7% rate increase option, Maria's 2015/16 rates would increase by approximately \$64 or \$1.23 per week. This increase does not include any increase in Council's domestic waste charge or stormwater levy.

Over the four years Maria's rates will increase by approximately \$294. After the four years Maria's rates will remain at the estimated \$1,294 plus the ongoing rate peg.

# John's story

## An example of how the proposed rate increase could affect ratepayers for a residential unit

John owns a strata unit and the land value of John's property is \$92,510 and his current rates are \$560.00 for 2014/2015 (excludes domestic waste charge and stormwater levy.)

If John preferred to maintain the City's assets and infrastructure network and selected the 7% rate increase option, John's 2015/16 rates would increase by approximately \$39.20 or \$0.75 per week. This increase does not include any increase in Council's domestic waste charge or stormwater levy.

Over the four years John's rates will increase by approximately \$225.40. After the four years John's rates will remain at the estimated \$785.40 plus the ongoing rate peg.

## Did you know?

Council offers a number of options for ratepayers to tailor their payments to manageable amounts. For example, you can arrange to pay quarterly and by varied payment methods. Ratepayers may apply for a 'Hardship Arrangement' if they experience financial difficulties in paying their rates. Further information can be found at [www.ryde.nsw.gov.au](http://www.ryde.nsw.gov.au)

# Rates Calculator

## How much will it cost me?

This will vary depending on where you live and the value of your land as determined by the NSW Valuer General. The options apply only to residential and business rates noting it does not include Council's domestic waste charge and stormwater levy. An average increase for each option is outlined in the table below. \* Please note the calculations below are an estimated increase and may vary slightly due to the basis of the rates calculator.

### Option A: DECLINE IN SERVICES

Option A: Decline in Services

				Proposed increase			
Rateable Value	No. of properties	*Land Value	2014/15	2015/16	2016/17	2017/18	2018/19
Approx Increase on Previous Year				3.00%	3.00%	3.00%	3.00%
\$0 to \$99,999	4,621	\$50,000	\$551.29	\$16.54	\$17.03	\$17.55	\$18.07
\$100,000 to \$385,999	11,846	\$243,000	\$591.06	\$17.74	\$18.26	\$18.83	\$19.38
\$386,000 to \$624,999	8,235	\$505,500	\$795.83	\$23.89	\$24.60	\$25.37	\$26.12
\$625,000 to \$749,999	10,897	\$687,500	\$1,061.92	\$31.88	\$32.82	\$33.85	\$34.86
\$750,000 to \$999,999	2,989	\$875,000	\$1,336.04	\$40.11	\$41.30	\$42.59	\$43.86
\$1,000,000 to \$1,999,999	716	\$1,500,000	\$2,249.79	\$67.55	\$69.55	\$71.71	\$73.86
\$2,000,000 to \$4,999,999	139	\$3,500,000	\$5,173.79	\$155.35	\$159.95	\$164.91	\$169.86
\$5,000,000 and greater	13	\$5,000,000	\$7,366.79	\$221.20	\$227.75	\$234.81	\$241.86
Average Resident Unit	1	\$154,325	\$572.79	\$17.18	\$17.70	\$18.24	\$18.78
Average Resident Dwelling	1	\$688,400	\$1,063.23	\$31.92	\$32.87	\$33.89	\$34.90

### Option B: MAINTAIN SERVICES

Option B: MAINTAIN SERVICES

Proposed increase

Rateable Value	No. of properties	*Land Value	2014/15	2015/16	2016/17	2017/18	2018/19
Approx Increase on Previous Year				7.00%	7.00%	7.00%	7.00%
\$0 to \$99,999	4,621	\$50,000	\$551.29	\$42.86	\$46.01	\$49.36	\$52.96
\$100,000 to \$385,999	11,846	\$243,000	\$591.06	\$53.52	\$57.71	\$62.12	\$66.86
\$386,000 to \$624,999	8,235	\$505,500	\$795.83	\$55.92	\$62.13	\$66.40	\$71.05
\$625,000 to \$749,999	10,897	\$687,500	\$1,061.92	\$66.84	\$74.41	\$79.28	\$84.56
\$750,000 to \$999,999	2,989	\$875,000	\$1,336.04	\$78.09	\$87.07	\$92.54	\$98.50
\$1,000,000 to \$1,999,999	716	\$1,500,000	\$2,249.79	\$115.60	\$129.25	\$136.75	\$144.95
\$2,000,000 to \$4,999,999	139	\$3,500,000	\$5,173.79	\$235.64	\$264.21	\$278.23	\$293.56
\$5,000,000 and greater	13	\$5,000,000	\$7,366.79	\$325.66	\$365.44	\$384.34	\$405.03
Average Resident Unit	1	\$154,325	\$572.79	\$48.62	\$52.33	\$56.26	\$60.47
Average Resident Dwelling	1	\$688,400	\$1,063.23	\$66.90	\$74.47	\$79.34	\$84.64

### Option C: UPGRADE SERVICES

Option C: UPGRADE SERVICES							Proposed increase
Rateable Value	No. of properties	*Land Value	2014/15	2015/16	2016/17	2017/18	2018/19
Approx Increase on Previous Year				12.00%	12.00%	12.00%	12.00%
\$0 to \$99,999	4,621	\$50,000	\$551.29	\$75.75	\$85.24	\$95.68	\$107.44
\$100,000 to \$385,999	11,846	\$243,000	\$591.06	\$98.30	\$111.11	\$125.17	\$141.04
\$386,000 to \$624,999	8,235	\$505,500	\$795.83	\$116.86	\$134.82	\$152.22	\$171.99
\$625,000 to \$749,999	10,897	\$687,500	\$1,061.92	\$138.99	\$160.47	\$180.87	\$204.08
\$750,000 to \$999,999	2,989	\$875,000	\$1,336.04	\$161.80	\$186.89	\$210.39	\$237.15
\$1,000,000 to \$1,999,999	716	\$1,500,000	\$2,249.79	\$237.80	\$274.97	\$308.81	\$347.34
\$2,000,000 to \$4,999,999	139	\$3,500,000	\$5,173.79	\$481.01	\$556.83	\$623.71	\$699.99
\$5,000,000 and greater	13	\$5,000,000	\$7,366.79	\$663.42	\$768.22	\$859.90	\$964.47
Average Resident Unit	1	\$154,325	\$572.79	\$87.94	\$99.22	\$111.62	\$125.60
Average Resident Dwelling	1	\$688,400	\$1,063.23	\$139.10	\$160.60	\$181.01	\$204.25

Business rates calculations for each option are also available at [www.futureryde.com.au](http://www.futureryde.com.au) or contact Council on 9952 8222.

# What is Council going to spend the extra money on?

Council is proposing the following program of works for the three options to repair and renew our assets and infrastructure to an acceptable and safe level.

## Option A: DECLINE

- Service levels significantly reduced
- Condition of our assets decline
- Rates increase only by rate peg amount set annually by the Minister of Local Government
- Rates increase at around 3% pa

## Option B: MAINTAIN

- Service levels largely maintained
- Renewal of Condition 5 assets
- Some Condition 4 assets renewed
- Average rates increase by 7% pa

## Option C: UPGRADE

- Service levels maintained
- Renewal of Condition 5 assets
- Most Condition 4 assets renewed
- Average rates increase by 12% pa

### Roads

Resurface 100 street blocks, reconstruct 28 street blocks, patch failed sections 6,000m<sup>2</sup> total - which is only 2/3 of work that should be undertaken

### Roads

In addition to Option A: Resurface an extra 30 street blocks, reconstruct an extra 5 street blocks, reconstruct 1.5km of bus routes pavements, patch additional 10,000m<sup>2</sup> failed sections

### Roads

In addition to Option A + B: Patch and resurface streets to remove major cracking or roughness, reconstruct an extra 10 street blocks and all bus routes rated poor

### Kerb and Gutter

Only replaced when street block roads are reconstructed

### Kerb and Gutter

In addition to Option A: Replace an extra 4km of kerb and gutter

### Kerb and Gutter

In addition to Option A + B: Replace an extra 2km of kerb and gutter and include kerb replacement with all road reconstructions

### Footpath

Replace small sections totalling 5,000m<sup>2</sup> over 500 locations

### Footpath

In addition to Option A: Replace extra and larger sections totalling 6,000 m<sup>2</sup> over 500 locations across the City

### Footpath

In addition to Option A + B: Replace extra and large sections totalling 6,000m<sup>2</sup> over 500 locations across the City

### Other Road Infrastructure

Maintenance and repair of minor damage and wear

### Other Road Infrastructure

In addition to Option A: Replace some roadside furniture such as rusting guard rails and fencing in 20 locations across the City

### Other Road Infrastructure

In addition to Option A + B: Replace most road furniture such as guard rails, fencing, steps, seating and bus shelters

### Stormwater

Replace 25 sections of stormwater drain where condition and overflows are a problem

### Stormwater

In addition to Option A: Replace an extra 500m of older trunk drains and damaged sections

### Stormwater

In addition to Option A + B: Replace an extra 500m of older trunk drains and damaged sections

### Playing Fields

Renewal of turf at most of the City's sporting grounds to cope with wear and tear

### Playing Fields

In addition to Option A: Turf renewals for wear and tear and major refurbishment (including irrigation) at 2 fields within the City

### Playing Fields

In addition to Option A + B: Renew turf for wear and tear at an additional 3 fields (including irrigation) within the City

### Playground Equipment

Only upgrade playgrounds with developer contributions

### Playground Equipment

In addition to Option A: Replace an extra 10 playgrounds from the 106 total

### Playground Equipment

In addition to Option A + B: Replace an extra 10 playgrounds of the 106 total

### Community Buildings and Halls

Only essential maintenance and some renewals (eg carpet, leaks). This would mean restricted access to assets to minimise wear and tear

### Community Buildings and Halls

In addition to Option A: Renew the external building components (ie: roofs, windows) and structural maintenance of 2 to 3 larger buildings (ie: halls)

### Community Buildings and Halls

In addition to Option A + B: Upgrade and replacement of internal building fitouts, amenities, and some mechanical systems (ie: paint, furniture, kitchens and other facilities)

# Frequently Asked Questions

## **This is the first time I've heard of a rate increase. Why didn't you ask residents for their opinions?**

We have recently conducted an online survey with 800 residents. We have also held discussion groups with 37 residents and a community workshop to get some feedback on various options that we could put to the community. During these feedback sessions we provided the type of information that would ensure what you would need, as a community member, to make an informed decision.

## **Does this mean City of Ryde is in financial trouble?**

No, we are in a sound financial position and have a balanced budget. However, due to our funding gap, Council is not able to allocate the required amount to maintain and renew our existing infrastructure assets. Therefore, the funding gap is not a debt, it is the additional income we need to maintain our services and assets for today and for future generations.

The ongoing increases in costs of maintaining our services and assets has severely stretched our funds and we are at a point where we need to decide whether to reduce, maintain or upgrade our services and assets.

## **If we do not get a special rate variation (SRV) what will happen?**

If Council does not receive an SRV, Council will have to reassess the standard and range of services it provides. This may result in some services ceasing. It could also see the condition of the City's assets deteriorate as there would be an ever increasing gap in the funds required to maintain our existing infrastructure assets. Council's fees and charges would increase and the level of subsidies and support Council provides to many organisations would decline or be withdrawn.

## **How much extra revenue will the SRV raise for Council?**

This won't be known until after the community consultation and then if the Council decides to make a submission to the Independent Pricing and Regulatory Tribunal (IPART), the final decision will be made by IPART. However the options range from an additional \$9 Million over 4 years (Option B) and \$22 Million (Option C).

## **What kind of services and assets are you talking about?**

Infrastructure assets include: local road and footpaths, cycleways, roundabouts, stormwater drains, parks, playgrounds, sportsfields, public domain supporting shopping centres, community halls and Libraries.

Services include: maintenance and repair of all listed assets above, Community events like the Granny Smith Festival and community Christmas events, as well as aged and disability services, immunisation, bush regeneration, development and building services, library services, and customer service.

## **Will this money go to redevelopment of the Civic Centre?**

No. Council will be spending the additional rate revenue on bringing our infrastructure assets back up to an acceptable and safe level. Rate revenue raised through this SRV will not be spent on the Civic Centre.

## **How will I know when Council has spent this money?**

If IPART grants an SRV the Council will provide quarterly updates on our website and through our quarterly reports to Council and the community.

## How long would I be paying the extra percentage on my rates?

This decision will be made by IPART. Council's intentions are to raise an SRV for 4 years, from 2015/2016.

## When would the increase become effective?

July 2015.

## How can I trust my increased rates are going to where you say they are?

Council is required to provide a detailed report on the SRV rates received and what works were undertaken with the funds in each year's Annual Report to the Community. A copy will also be provided to both the Office of Local Government and the Independent Pricing and Regulatory Tribunal (IPART).

## What happens after 4 years?

In simple terms, what a ratepayer pays in 2018/2019 will be increased by the approved rate peg for the 2019/2020 year, estimated at 3%.

## CONTACT US

### Customer Service Centre

Civic Centre, 1 Devlin Street, Ryde NSW  
Monday to Friday, 8.30am-4.30pm  
Phone 9952 8222  
Fax 9952 8070  
TTY 9952 8470  
Email [cityofryde@ryde.nsw.gov.au](mailto:cityofryde@ryde.nsw.gov.au)

### Website

[www.ryde.nsw.gov.au](http://www.ryde.nsw.gov.au)

### Postal Address

Locked Bag 2069, North Ryde NSW 1670

### Ryde Planning and Business Centre

1 Pope Street, Ryde NSW 2112  
Phone 9952 8222  
Monday to Friday, 9.00am-5.00pm

-  [Twitter.com/CityofRyde](https://twitter.com/CityofRyde)
-  [Facebook.com/CityofRyde](https://facebook.com/CityofRyde)
-  [Instagram.com/CityofRyde](https://instagram.com/CityofRyde)
-  [Pinterest.com/CityofRyde](https://pinterest.com/CityofRyde)
-  [YouTube.com/CityofRydeCouncil](https://youtube.com/CityofRydeCouncil)
-  [www.ryde.nsw.gov.au/eNews](http://www.ryde.nsw.gov.au/eNews)

## Translation Services

### ENGLISH

To understand this document ring the Translating and Interpreting Service on 131 450 and ask an interpreter to contact Council for you on 9952 8222. This document is also available in Armenian, Simplified and Traditional Chinese, Korean and Italian at [www.futureryde.com.au](http://www.futureryde.com.au).

### ARABIC

تیریر حتلا تمجرتلا تمدخبل صتا، تفتیولا مده مهفلا  
مجرتملا نم بلطاو 131 450 مقر یلء تیفتشلاو  
9952 8222 مقر یلء کذء تباین س لجملاب لاصتلا

### ARMENIAN

Այս փաստաթուղթը հասկնալու համար  
հեռաձայնեցեք Թարգմանութեան  
Սպասարկութիւն 131 450, եւ խնդրեցեք  
որ թարգման մը ձեզի համար կապ  
հաստատէ Քաղաքային Խորհուրդին  
հետ, հեռաձայնելով 9952 8222 թիւին:  
Այս փաստաթուղթը կարելի է ունենալ  
նաեւ Հայերէնով  
[www.futureryde.com.au](http://www.futureryde.com.au)

### CHINESE

欲了解本文件内容，請致電翻譯和傳譯  
服務，電話：131 450，要求傳譯員為您  
致電 9952 8222，聯絡協會。本文檔有  
繁體中文版，請瀏覽  
[www.futureryde.com.au](http://www.futureryde.com.au)

本文有简体中文版，请浏览：  
[www.futureryde.com.au](http://www.futureryde.com.au)

### FARSI

مدش متشونز بلاطم كرد رد كمك یارب دیناوت ی مامش  
مب ی بنک ممجرت و ی مامش ممجرت تامدخ مب نتم نیا رد  
مجرتم کید دینک شواوخ و دینزب گنز 131450 مرامش  
نفلت 9952 8222 مرامش مب اروشد مب امش یارب ی مامش  
تفایرد اروشد زا ار مزلا تاحیضوت بیترت نیدب ات دنک  
دینک.

### ITALIAN

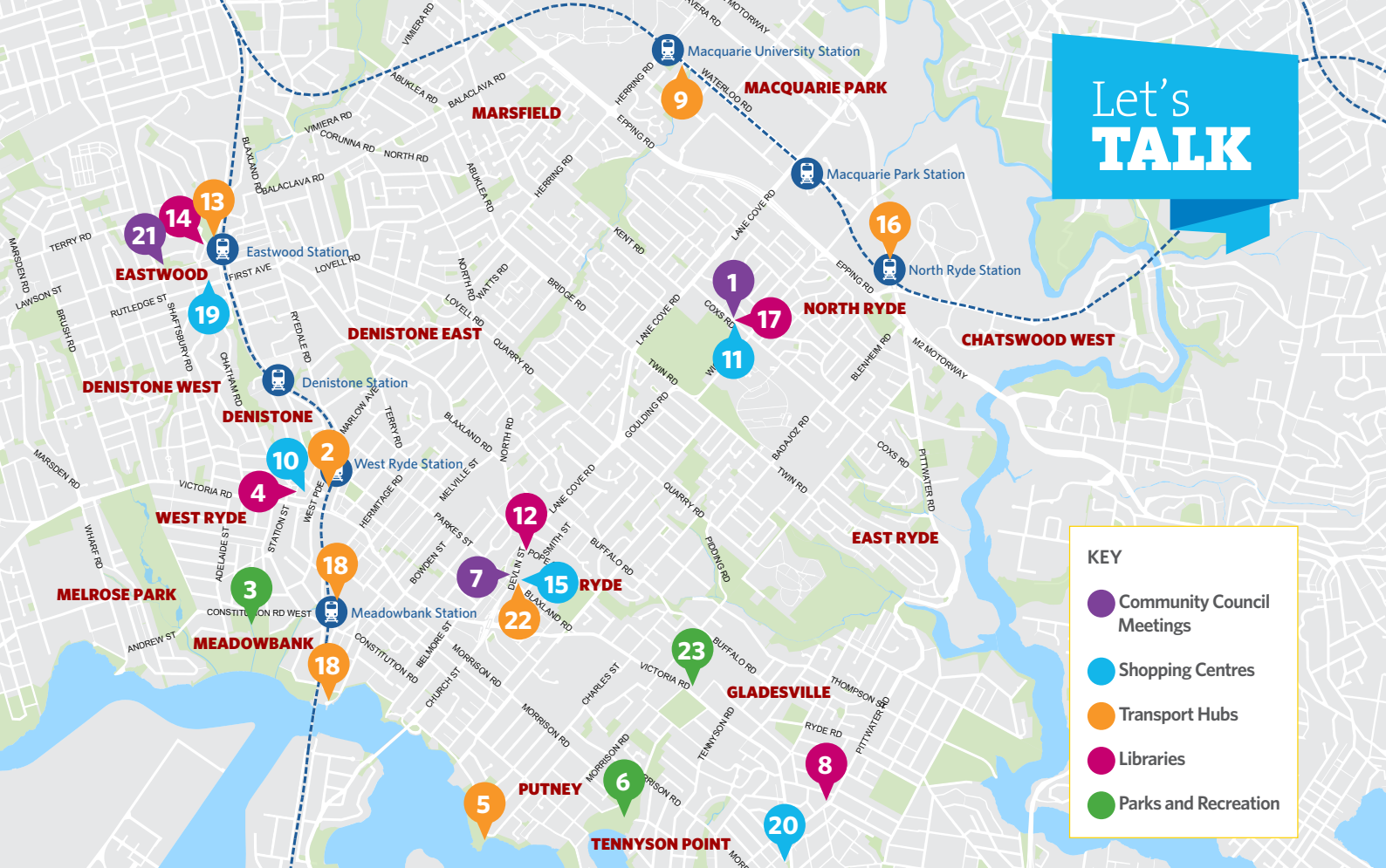
Per comprendere questo documento,  
chiamate il Servizio Traduzione e  
Interpretariato al numero 131 450 e  
chiedete ad un interprete di contattare il  
Comune per voi al numero 9952 8222.  
Questo documento e' disponibile anche in  
Italiano a [www.futureryde.com.au](http://www.futureryde.com.au)

### KOREAN

본 문서에 대한 이해를 위해 131 450  
번 통번역서비스 (Translating and  
Interpreting Service) 센터에 전화하셔서  
통역사에게 귀하를 대신해 9952 8222  
번 의회에 전화를 하여 대화 내용을  
통역해 달라고 요청하십시오 이 문서를  
한국어로 볼 수 있는 곳:  
[www.futureryde.com.au](http://www.futureryde.com.au)



# Let's TALK



## KEY

- Community Council Meetings
- Shopping Centres
- Transport Hubs
- Libraries
- Parks and Recreation

To find out more about the proposed rate increase or to have a conversation with us, you can attend a Community Council Meeting or one of the information sessions listed below;

- 1 Wednesday 6 August**  
7.30 - 9.00pm  
Community Council Meeting, North Ryde School of Arts  
201 Coxs Rd, North Ryde.
- 2 Friday 8 August**  
7.00 - 9.00am  
West Ryde Station.
- 3 Saturday 9 August**  
10.00am - 12 noon  
Meadowbank Park, Constitution Road.
- 4 Tuesday 12 August**  
10.00am - 12 noon  
(المحدث عربي)  
يتوفر في هذا جلسة  
이 시간에는 한국어  
통역이 가능합니다)  
and 5.30 - 7.30pm  
West Ryde Library  
2 Graf Avenue.
- 5 Friday 15 August**  
7.00 - 9.00am  
Kissing Point Wharf.
- 6 Sunday 17 August**  
10.00am - 12 noon  
Morrison Bay Park,  
Frances Road, Putney.
- 7 Tuesday 19 August**  
7.30pm - 9.00pm  
Community Council Meeting, Civic Hall  
1 Devlin Street, Ryde.
- 8 Thursday 21 August**  
10.00am - 12 noon  
(Italiano disponibile in questa sessione) and  
5.30 - 7.30pm  
Gladesville Library,  
6 Pittwater Road.
- 9 Friday 22 August**  
7.00 - 9.00am  
Macquarie Uni Station and Macquarie Cnr of Waterloo and Herring Rds, North Ryde.
- 10 Saturday, 23 August**  
10.00am - 12 noon  
Inside West Ryde Marketplace  
14 Anthony Road.  
(المحدث عربي)  
يتوفر في هذا جلسة  
이 시간에는 한국어  
통역이 가능합니다).
- 11 Saturday 23 August**  
10.00am - 12 noon  
Coxs Road Shops  
201 Coxs Rd, North Ryde.
- 12 Tuesday 26 August**  
10.00am - 12 noon  
(Italiano disponibile in questa sessione).  
Հայերէն խօսող մը  
ներկա կգտնվի այս  
նիստին.  
المحدث عربي  
(يتوفر في هذا جلسة  
و 5.30 - 7.30pm  
Ryde Library,  
1 Pope Street.
- 13 Friday 29 August**  
7.00 - 9.00am  
Eastwood Station, east side.
- 14 Wednesday 3 September**  
10.00am - 12 noon  
(本次會議有講粵語和普通話的工作人員。 이 시간에는 한국어 통역이 가능합니다) and  
5.30 - 7.30pm  
Eastwood Library, Cnr Hillview Rd and West Parade.
- 15 Thursday 4 September**  
5.30 - 7.30pm  
Top Ryde City Corner  
Devlin Street and Blaxland Road Ryde Level LG1 Escalators outside Big W).  
(Հայերէն խօսող մը  
ներկա կգտնվի այս  
նիստին.  
المحدث عربي  
(يتوفر في هذا جلسة).
- 16 Friday 5 September**  
7.00 - 9.00am  
North Ryde Station.
- 17 Thursday 11 September**  
10.00am - 12 noon  
(Հայերէն խօսող մը  
ներկա կգտնվի այս  
նիստին) and  
5.30 - 7.30pm  
North Ryde Library,  
201 Coxs Road.
- 18 Friday 12 September**  
7.00 - 9.00am  
Meadowbank Station Plaza area & Wharf.
- 19 Saturday 13 September**  
10.00am - 12 noon  
(本次會議有講粵語和普通話的工作人員。 이 시간에는 한국어 통역이 가능합니다)  
Eastwood Plaza.
- 20 Saturday 13 September**  
10.00am - 12 noon  
Trim Place Shops, Gladesville.  
(Italiano disponibile in questa sessione).
- 21 Thursday 18 September**  
7.30 - 9.00pm  
Community Council Meeting, Eastwood Hall, 159-161  
Shaftsby Road, Eastwood.
- 22 Friday 19 September**  
7.00 - 9.00am  
Top Ryde City Bus Terminal on Blaxland Road - Corner Devlin Street and Blaxland Road Ryde.
- 23 Saturday 20 September**  
10.00am - 12 noon  
Ryde Aquatic Leisure Centre, 504 Victoria Road, Ryde.