

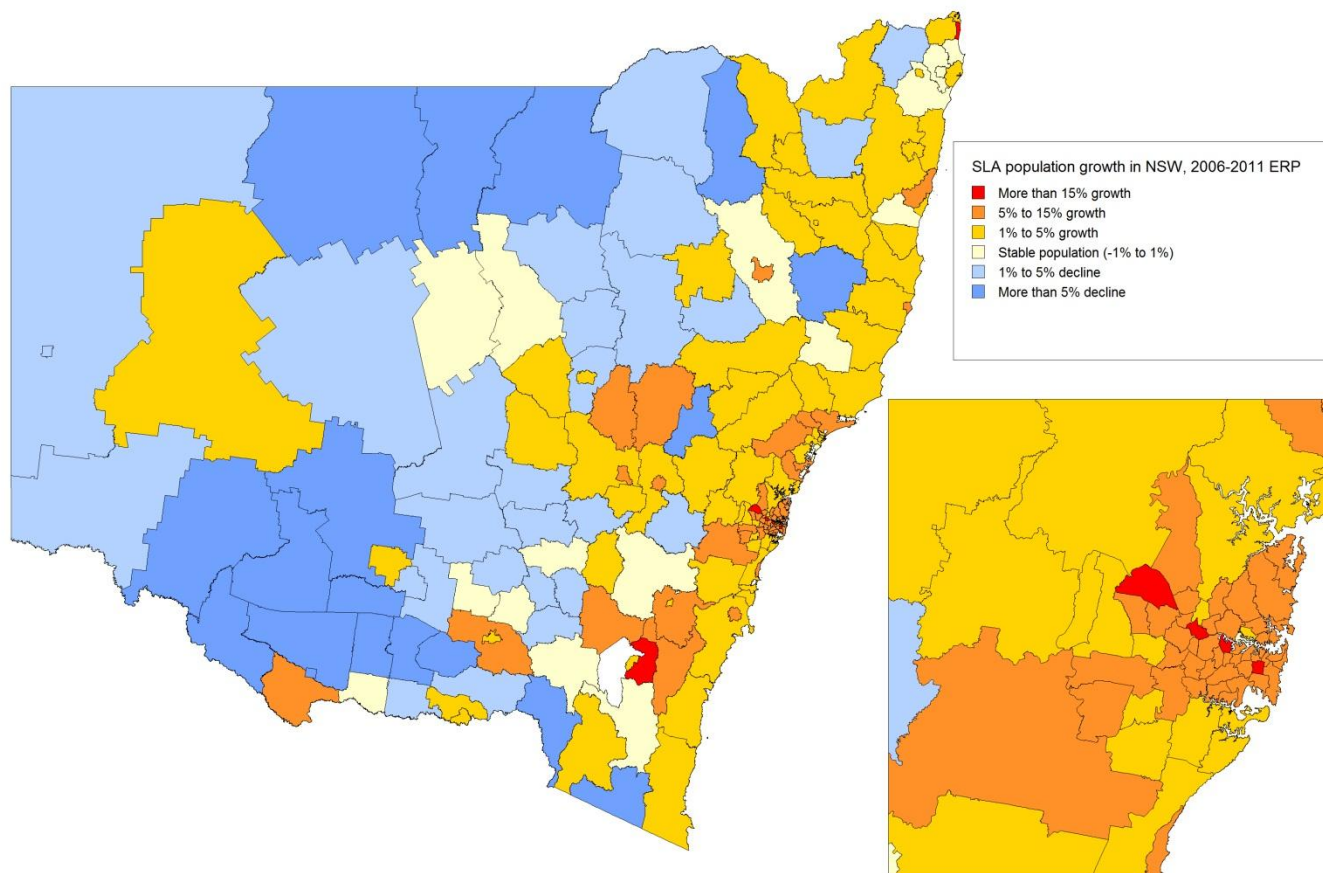
# Marrickville

## highlights

This is a brief summary of the population trend highlights for the Marrickville council area, particularly looking at how Marrickville is significantly different from other areas of Sydney and how it is changing.

It uses Marrickville's publicly accessible profile.id site along with those of other councils to build a picture of what makes Marrickville different, and how wider trends apply to the area.

# Population growth by Statistical Local Area, New South Wales, 2006-2011



Source: ABS, Regional Population Growth, 3210.0

# Summary of population and housing trends - NSW

- Large increase in overseas migration, which is supporting population growth in NSW. China, India, Philippines and Nepal the largest groups.
- Interstate migration seems to be down, with smaller losses to Queensland.
- High number of births. 0-4 age population up by 38,000 (9%) after falling from 1991-2006.
- Migration and births slowing the relative ageing of the population, but still big increases in over 60s.

# Summary of population and housing trends

- Population increased 5.7% but dwellings only 4.9%. Less unoccupied dwellings, and a slight increase in household size.
- Median individual income up around 22% (and household income 18.7%) but mortgage payments up 32% and rent up 43%. More households in housing stress.
- NSW is moving further towards high density housing. Separate houses rose by 7.5% nationwide but only 3.1% in NSW – medium density up by 7.8% and high density 12.4%.

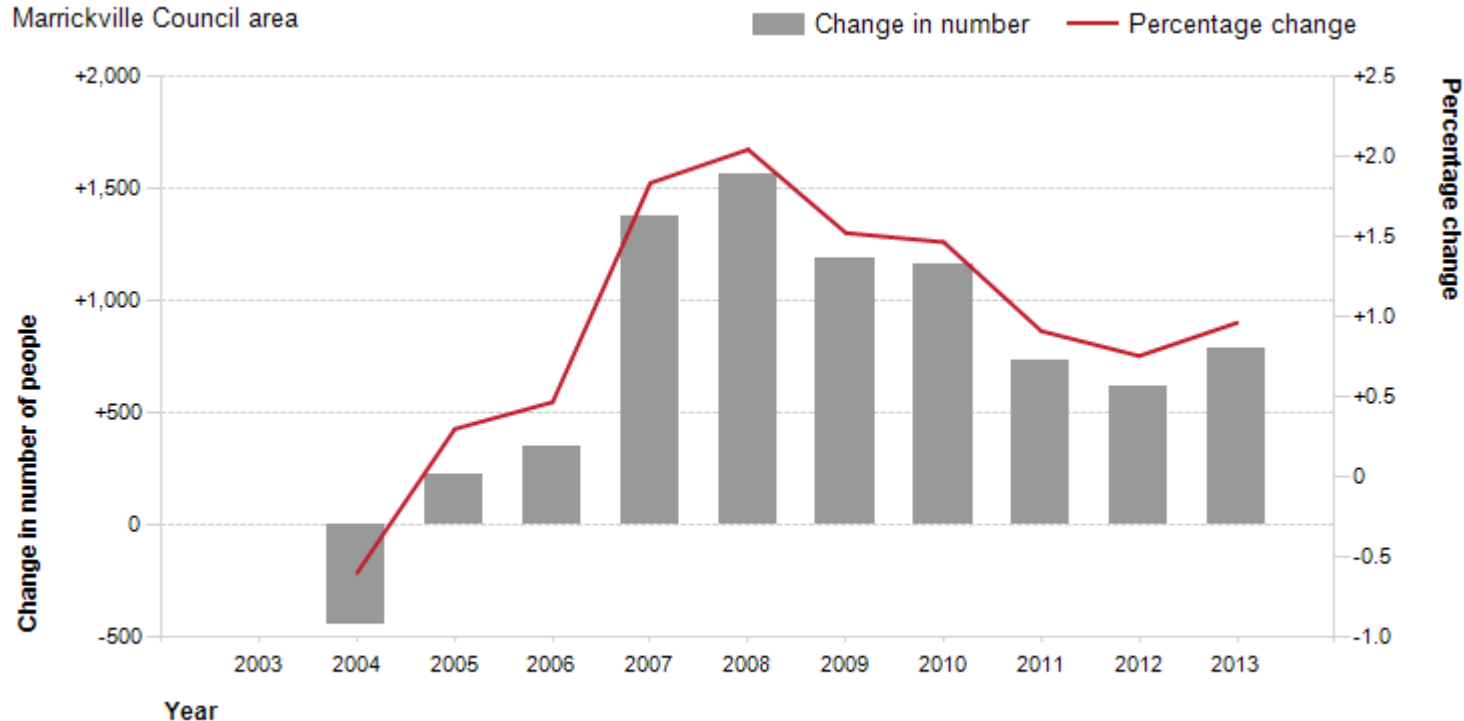
# What are the trends in Marrickville? - *Population*

TREND	Marickville	New South Wales
Estimated Resident Population, 2013	82,523	7,211,468
Population change 2008-2013	Gain of 4,488 people	5.8% growth
Census UR population change 2006-2011	Gain of 4,684 people, 6.5%	
Dwelling change 2006-2011	Gain of 1,448 dwellings, 4.4%	5.0% growth

# Marrickville's population growth

## Annual change in Estimated Resident Population (ERP)

Marrickville Council area



Source: Australian Bureau of Statistics, Regional Population Growth, Australia (3218.0). Compiled and presented by .id the population experts

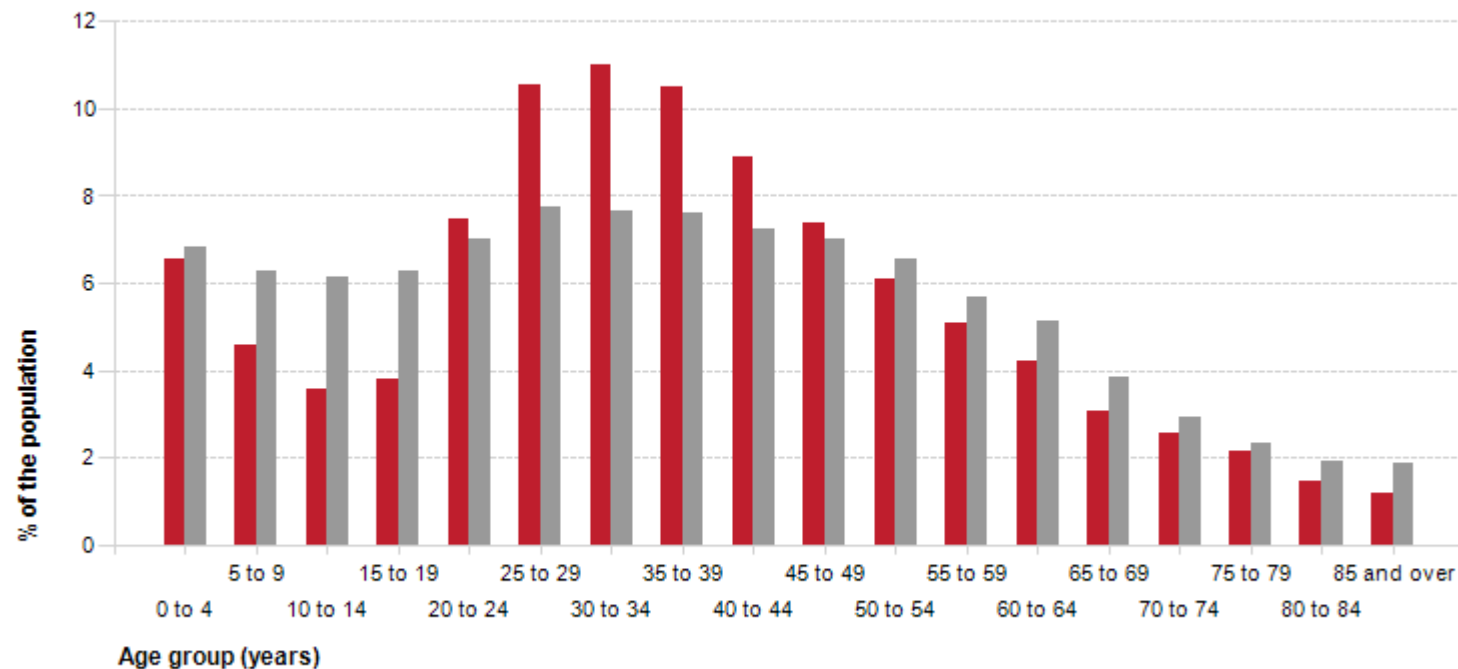
# Population change summary

Small Area	2011	2006	5 year 2001 growth %	10 year growth %
Camperdown	2,797	2,494	2,417	12.1% 15.7%
Dulwich Hill	13,280	12,263	12,596	8.3% 5.4%
Enmore	3,581	3,443	3,616	4.0% -1.0%
Lewisham	2,742	2,749	2,919	-0.3% -6.1%
Marrickville	24,573	23,359	24,776	5.2% -0.8%
Newtown	7,310	6,605	6,398	10.7% 14.3%
Petersham	7,556	7,141	6,707	5.8% 12.7%
St Peters - Sydenham	3,887	3,444	3,132	12.9% 24.1%
Stanmore	7,427	7,152	7,019	3.8% 5.8%
Tempe	3,302	3,182	3,336	3.8% -1.0%
<b>Marrickville Council</b>	<b>76,455</b>	<b>71,832</b>	<b>72,916</b>	<b>6.4% 4.9%</b>

# Age structure

## Five year age structure, 2011

■ Marrickville Council area   ■ Greater Sydney

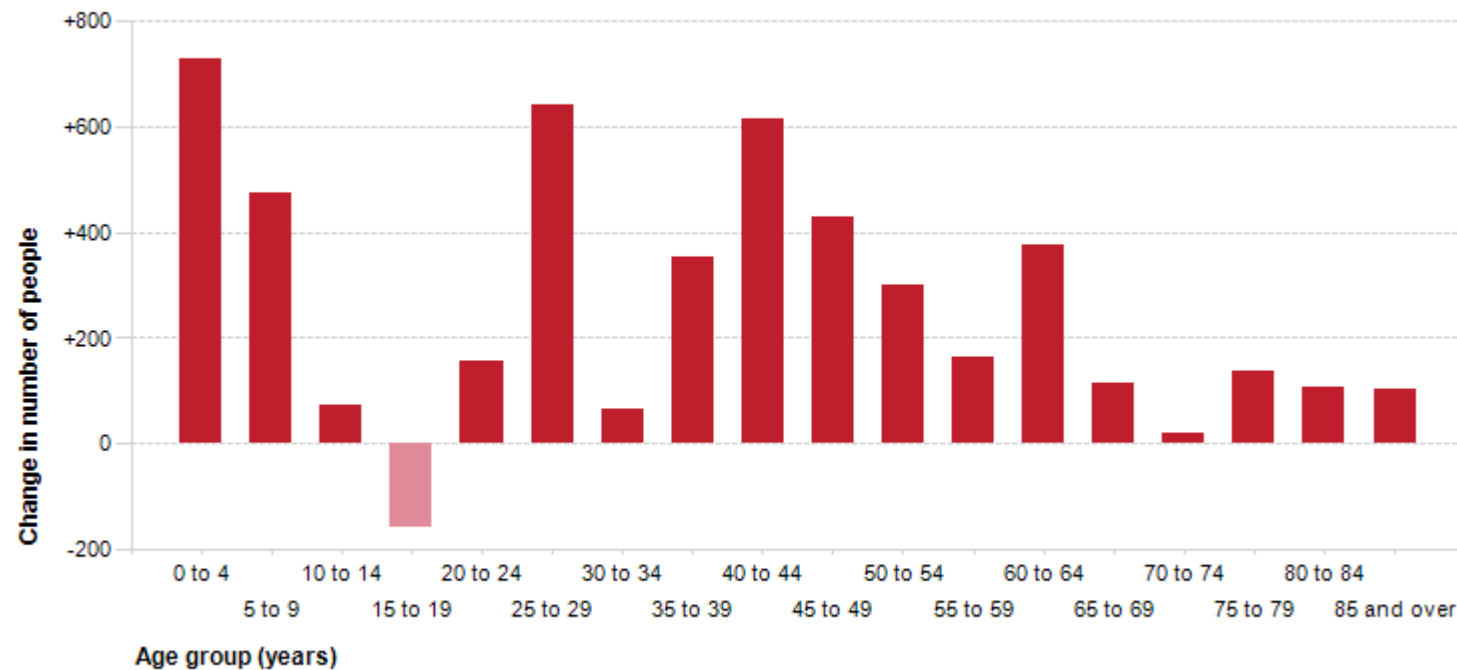


Source: Australian Bureau of Statistics, Census of Population and Housing, 2011 (Usual residence data)  
Compiled and presented by .id, the population experts.

# Age structure - trend

## Change in age structure - five year age groups, 2006 to 2011

Marrickville Council area - Total persons



Source: Australian Bureau of Statistics, Census of Population and Housing, 2006 and 2011 (Usual residence data)  
Compiled and presented in profile.id by .id, the population experts.

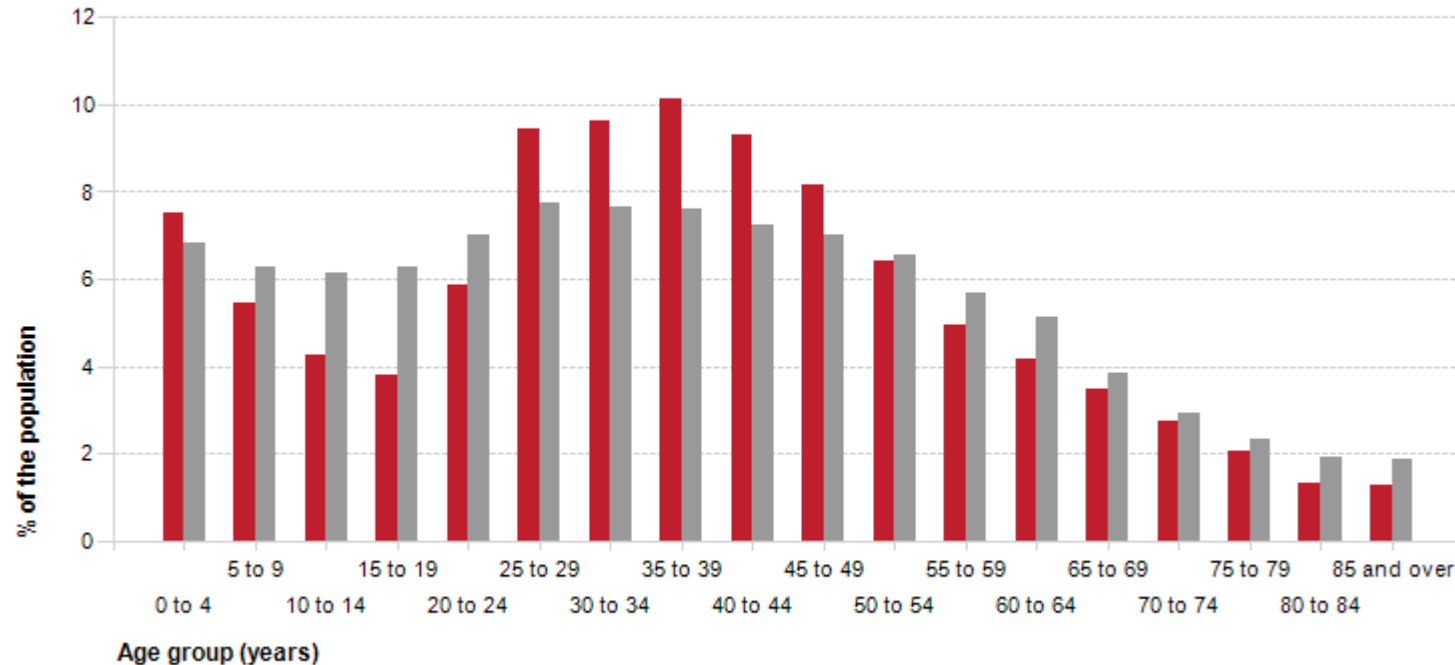
# Age structure

- Marrickville still has a slightly lower percentage of young children (<5) than the Sydney average.
- But it did have one of the largest increases in the whole of NSW, for a council this size.
- An extra 729 0-4 year olds over 5 years. As a percentage it's risen from 5.6% to 6.5% in 10 years and is likely to continue to increase.
- Older children in lower proportions – inner city areas tend not to have too many of those. But school age children will increase at the next Census as those born here age in place.
- Comparisons: Marrickville + 729, Waverley +718, Leichhardt +869, Canada Bay +1,040, Parramatta +2,360.

# What are the trends in Marrickville? - Age

## Five year age structure, 2011

■ Dulwich Hill ■ Greater Sydney



Source: Australian Bureau of Statistics, Census of Population and Housing, 2011 (Usual residence data)  
Compiled and presented by .id, the population experts.

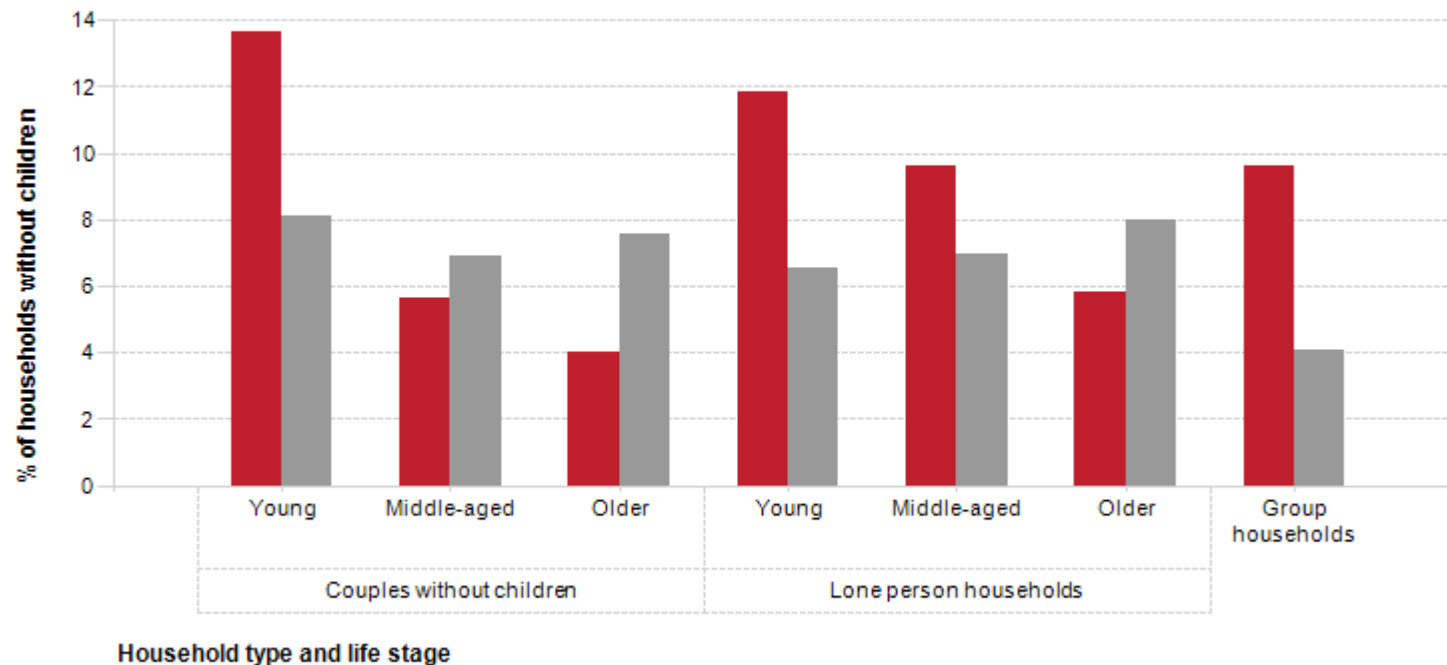
# Household types

- Young couples (<45) without children – 13.7% - fourth in NSW.
  - Leichhardt 13.8%
  - Sydney 17.0%
  - North Sydney 16.2%
- Group households – 9.6% - third in NSW
  - Sydney 12.2%
  - Leichhardt 7.2%
  - Randwick 9.1%
  - Waverley 9.9%

# Household type

## Households without children, 2011

■ Marrickville Council area   ■ Greater Sydney

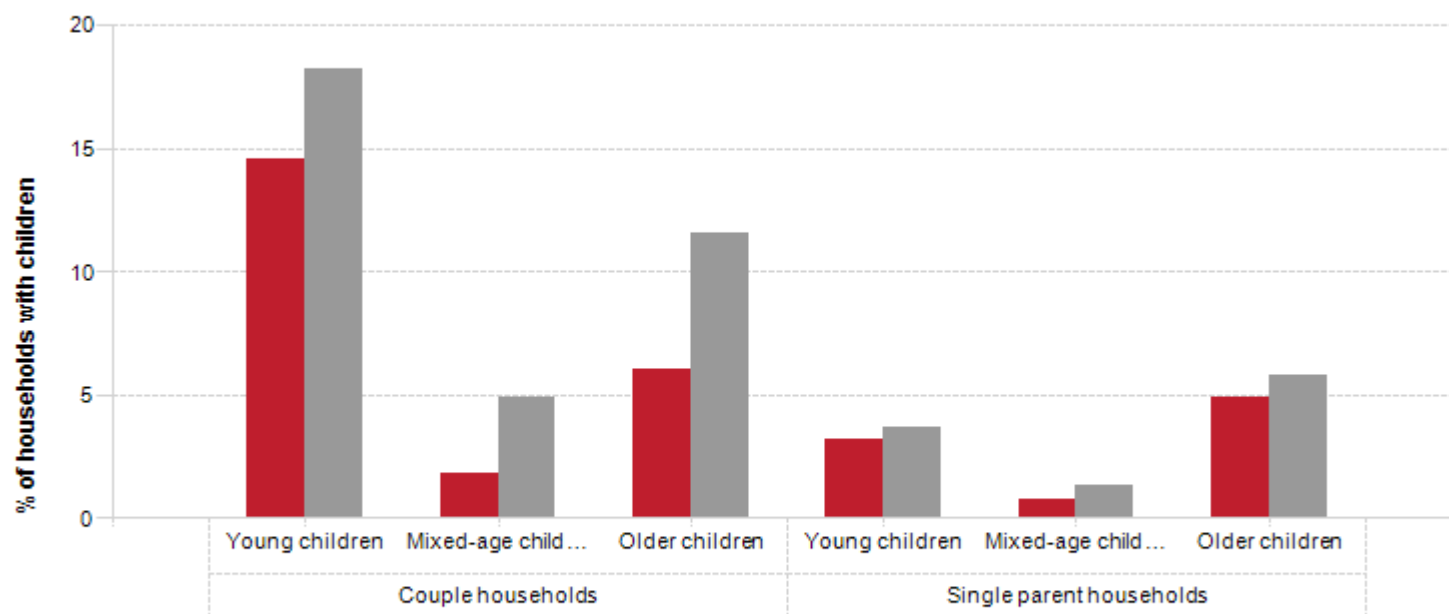


Source: Australian Bureau of Statistics, Census of Population and Housing, 2011 (Enumerated data)  
Compiled and presented in profile.id by .id, the population experts.

# Household type

## Households with children, 2011

■ Marrickville Council area   ■ Greater Sydney



### Household type and life stage of children

Source: Australian Bureau of Statistics, Census of Population and Housing, 2011 (Enumerated data)  
Compiled and presented in profile.id by .id, the population experts.

# Same-sex couples

- Marrickville has a large number of same-sex couples, particularly female same-sex couples.
- The Census count of same-sex couples is believed to be an undercount.
- Nevertheless, 7.4% of couple households (with or without children) nominated as same-sex.
- This is the second-highest rate in Australia (to City of Sydney).
- The female same-sex couple rate of 3.7% is the highest in Australia.

# Average household size

2.30 persons per household – puts Marrickville in the lowest 1/3d of household size in NSW.

But it increased by 0.04 in 5 years.

Sharp decline over 20 years from 2.62 in 1991 when it was the same as Sydney. Smaller households now dominant despite a recent increase.

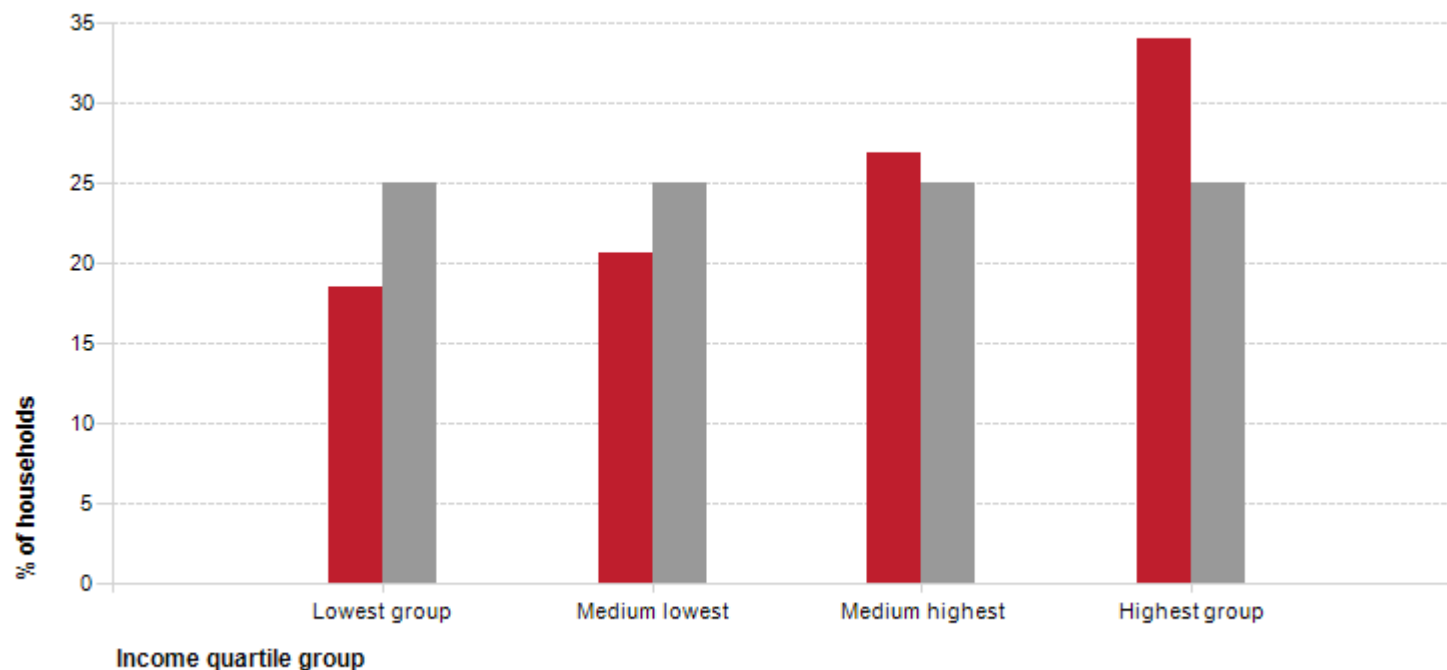
# Socio-economic trends in 2011

TREND	Marrickville	New South Wales
Median Household income (weekly)	\$1,601 up 35% since 2006	\$1,233, up 19% since 2006
Mortgage payments (weekly)	\$573 up 27% since 2006	\$460 up 31% since 2006
Rental payments (weekly)	\$370 up 48% since 2006	\$300 up 43% since 2006

# What are the trends in Marrickville? - Socio-economic

## Household income quartiles, 2011

■ Marrickville Council area   ■ New South Wales

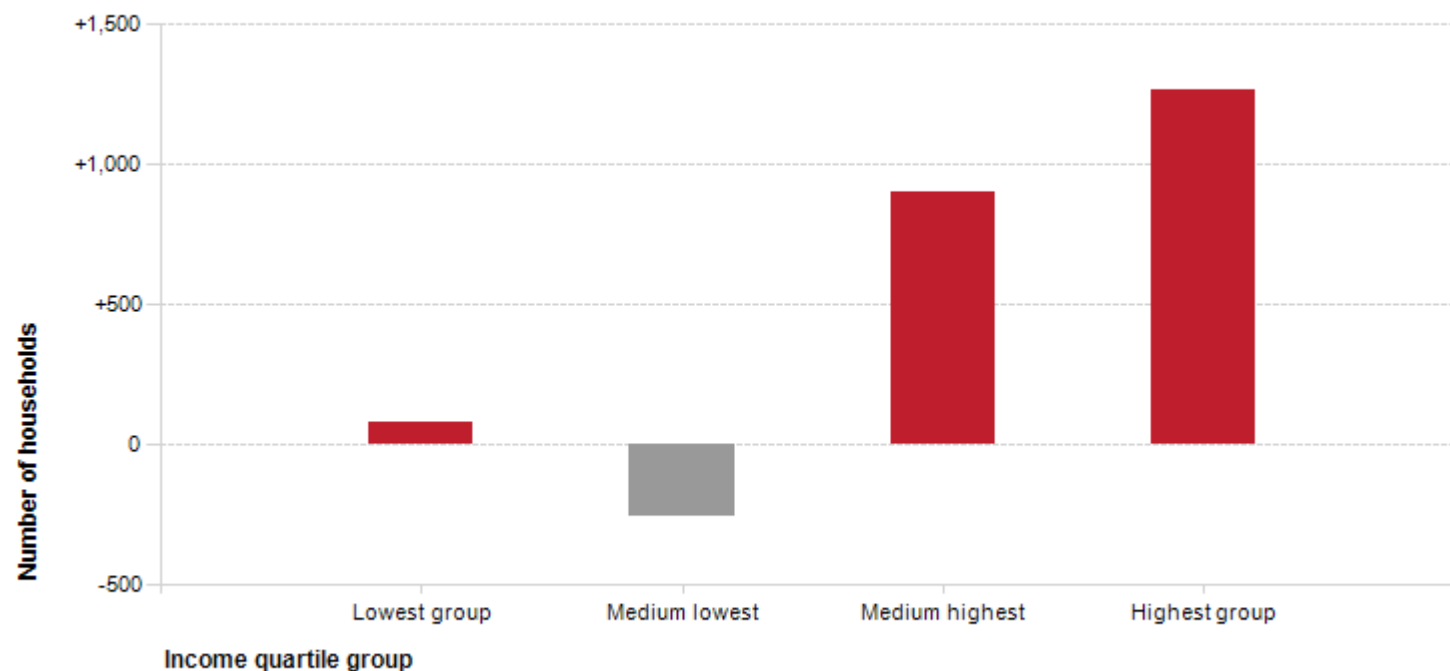


Source: Australian Bureau of Statistics, Census of Population and Housing, 2011 (Enumerated data)  
Compiled and presented by .id, the population experts.

# What are the trends in Marrickville? - Socio-economic

## Change in household income quartile, 2006 to 2011

Marrickville Council area



Source: Australian Bureau of Statistics, Census of Population and Housing, 2006 and 2011 (Enumerated data)  
Compiled and presented by .id, the population experts.

# Socio-economic trends

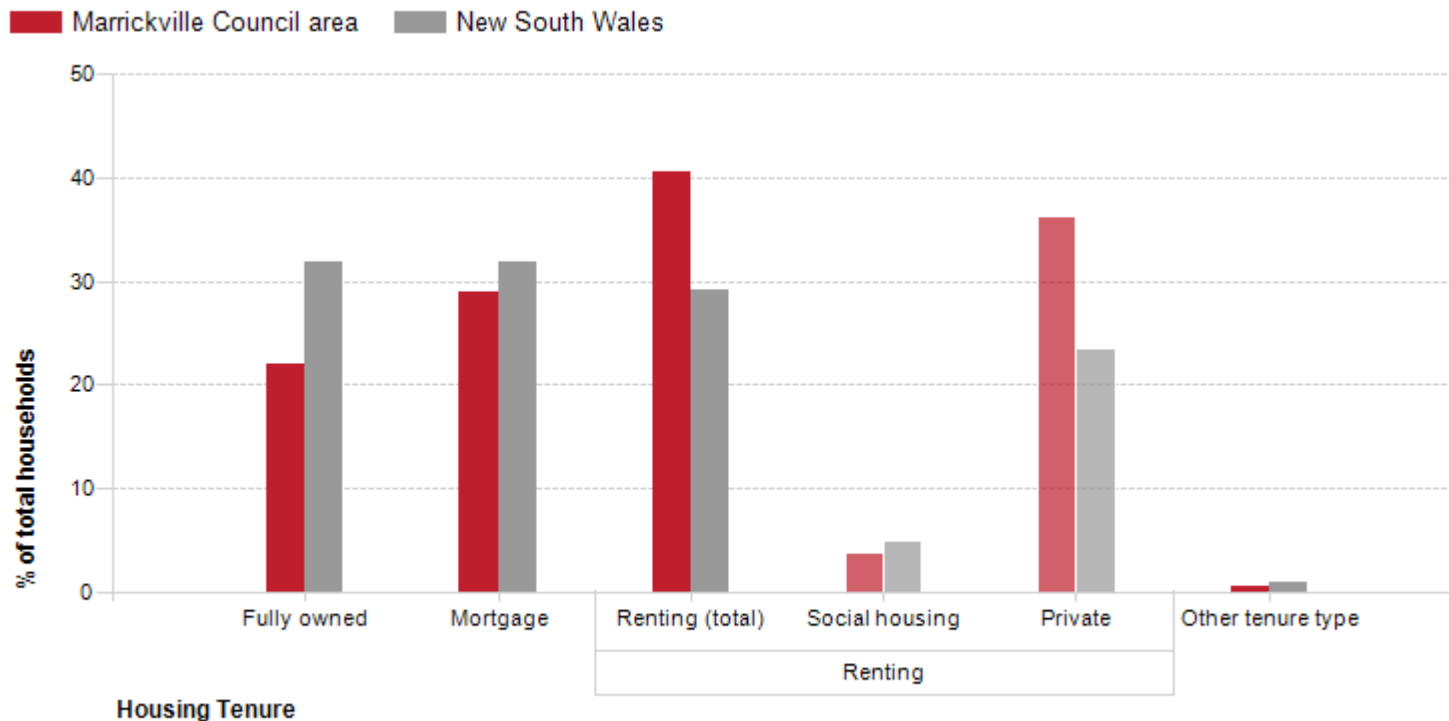
- Marrickville's SEIFA score rose slightly from 1,007 to 1,021 over 5 years (these are not really directly comparable)
- In 2006, Marrickville ranked 29<sup>th</sup> out of 43 LGAs in Greater Sydney for socio-economic status.
- In 2011, Marrickville ranked 24<sup>th</sup>.
- Now gone ahead of Hawkesbury, Ashfield, Hurstville, Gosford and City of Sydney.
- This was the largest rise of any Sydney LGA in SEIFA ranking.
- Still much lower SEIFA than Leichhardt (1079) and Canada Bay (1067), similar to Ashfield (1015) and higher than Rockdale (991) and Canterbury (922)

# Socio-economic trends

- 35.9% of residents are employed as Professionals.
- This is well above the Sydney average, but not one of the highest, as most north-shore areas are higher.
- 34.6% of all people had a degree qualification in 2011. This is up from 11.5% in 1991.
- Marrickville is dominated by private renters (36.4% - the 5<sup>th</sup> highest in the state), but the biggest increase in 5 years was households with a mortgage (+1,282 to 28.9%).
- This indicates that young couples formerly renting in the area are increasingly buying, settling long-term and having children in the area.

# What are the trends in Marrickville? - Tenure

## Housing tenure, 2011

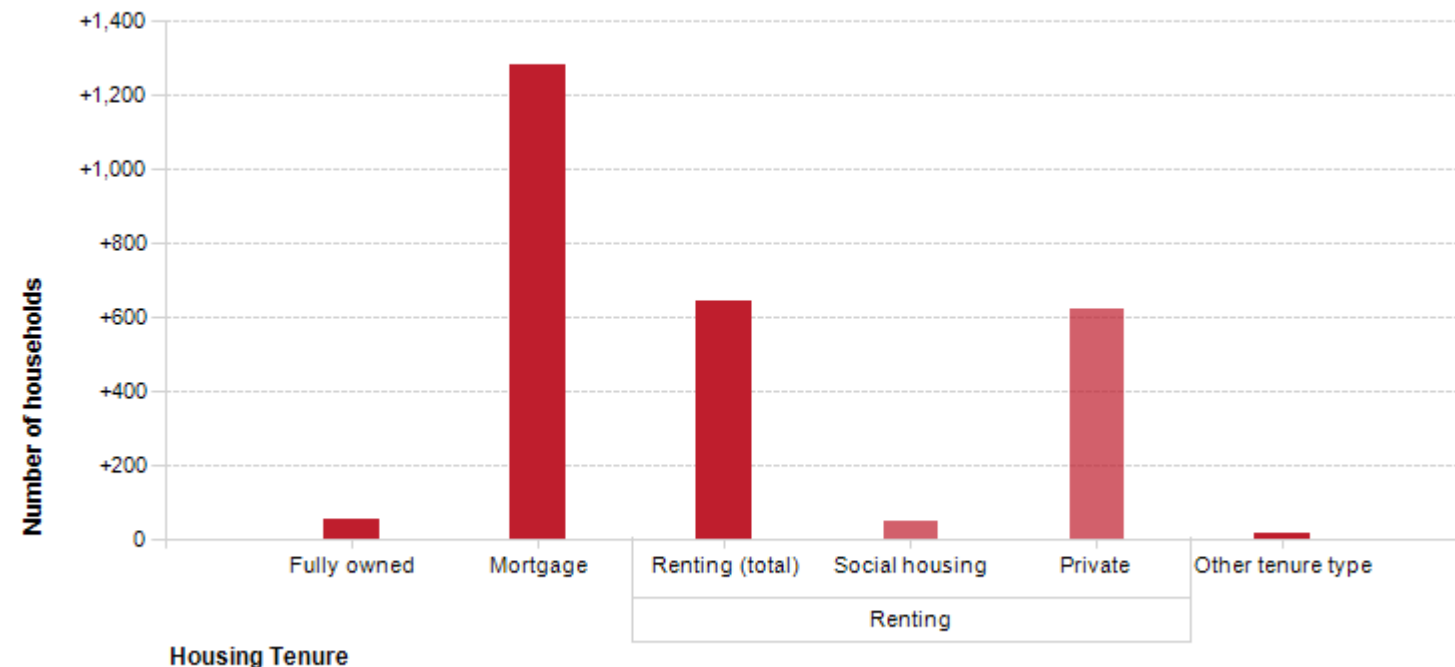


Source: Australian Bureau of Statistics, Census of Population and Housing, 2011 (Enumerated data)  
Compiled and presented by .id, the population experts.

# What are the trends in Marrickville? - Tenure

## Change in housing tenure, 2006 to 2011

Marrickville Council area



Source: Australian Bureau of Statistics, Census of Population and Housing, 2006 and 2011 (Enumerated data)  
Compiled and presented by .id, the population experts.

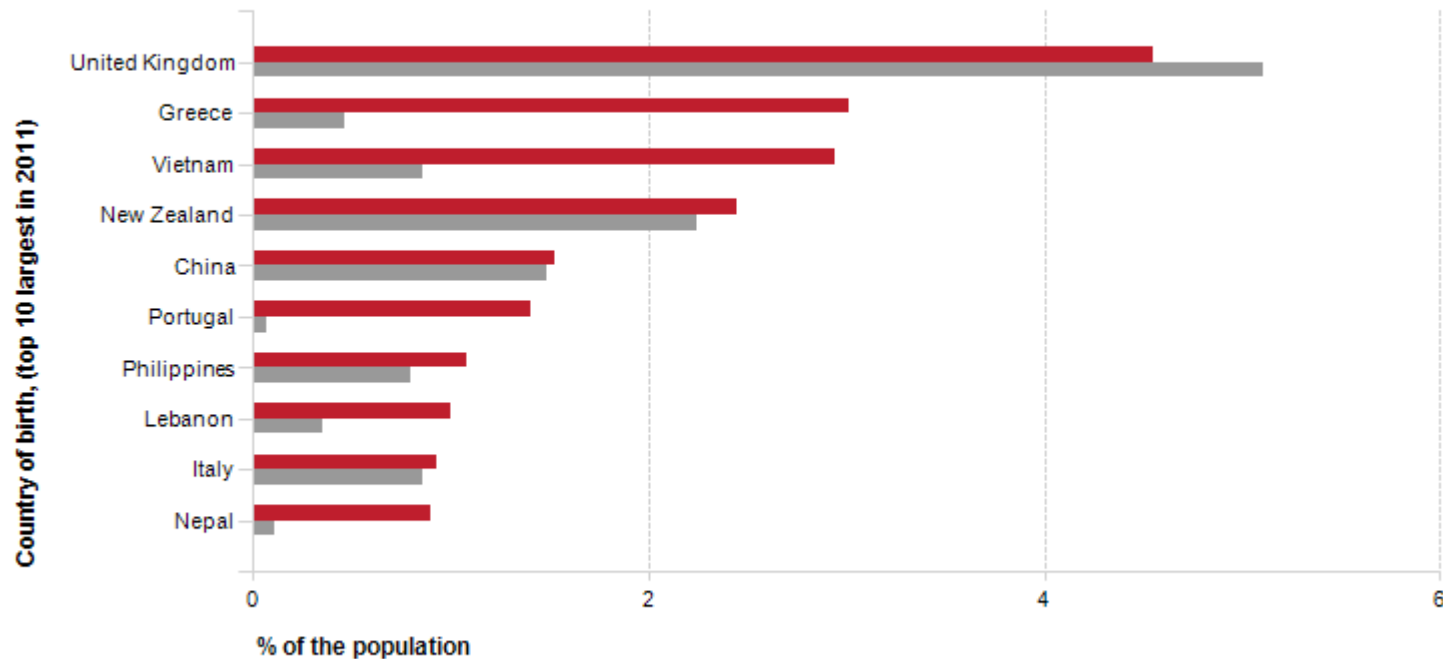
# What are the trends in Marrickville? – Cultural Diversity

TREND	Marrickville	New South Wales
% overseas born	34.1%, down from 34.4% in 2006	25.7% up from 23.7% in 2006
% Language other than English	30.7%, down from 32.7% in 2006	22.5% up from 20.1% in 2006
% Poor English proficiency	7.1%, down from 8.5% in 2006	3.9% up from 3.7%
% Recent Arrivals	18.4% of overseas born arrived in the last 5 years.	19.2%

# What are the trends in Marrickville? - Diversity

## Country of birth, 2011

■ Marrickville Council area ■ Australia

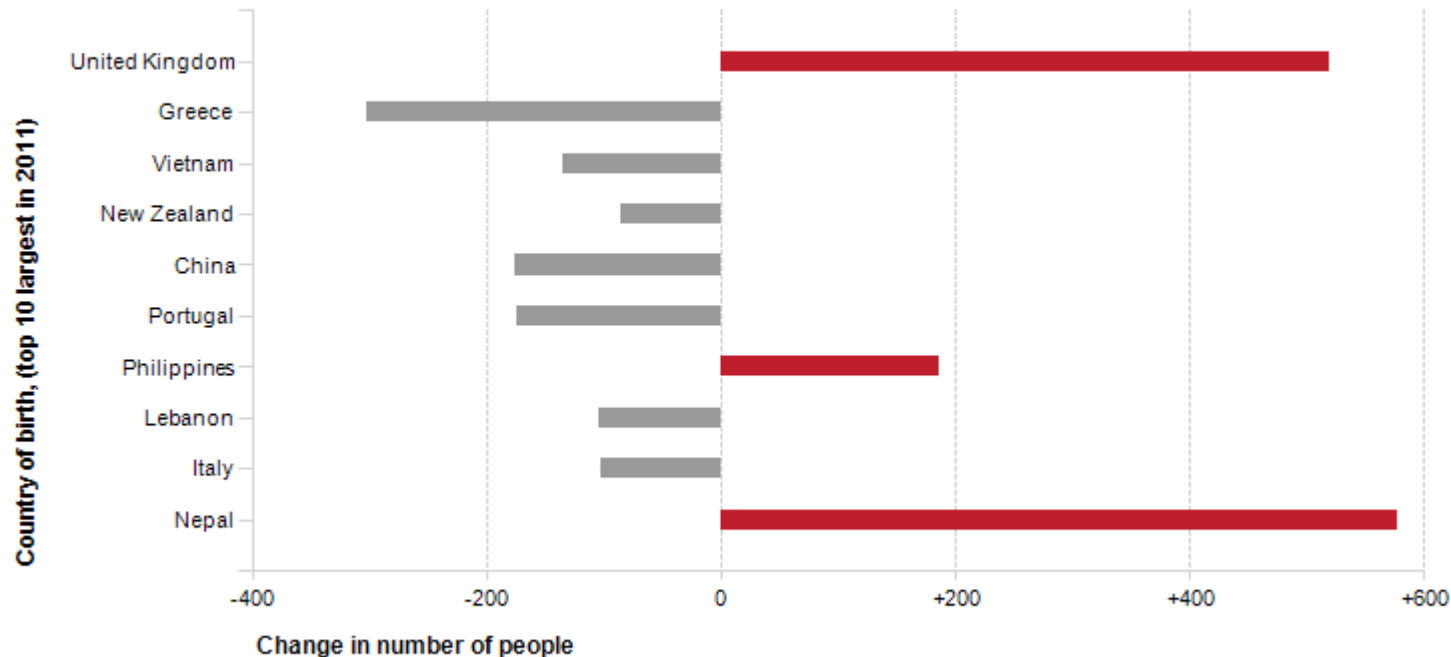


Source: Australian Bureau of Statistics, Census of Population and Housing, 2011 (Usual residence data)  
Compiled and presented by .id, the population experts.

# What are the trends in Marrickville? - Diversity

## Change in country of birth, 2006 to 2011

Marrickville Council area

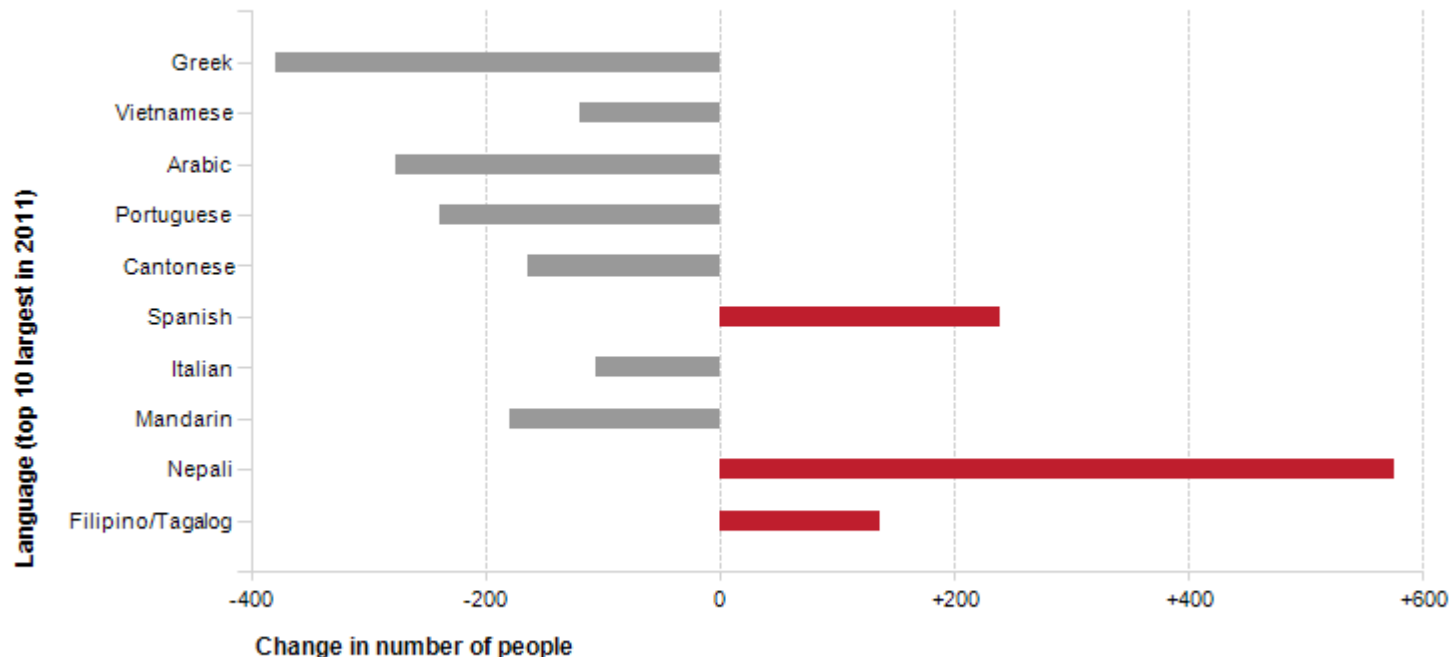


Source: Australian Bureau of Statistics, Census of Population and Housing, 2006 and 2011 (Usual residence data)  
Compiled and presented by .id, the population experts.

# What are the trends in Marrickville? - Diversity

## Change in language spoken at home, 2006 to 2011

Marrickville Council area



Source: Australian Bureau of Statistics, Census of Population and Housing, 2006 and 2011 (Usual residence data)  
Compiled and presented by .id, the population experts.

# Diversity

- In 1991, Marrickville was among the most diverse LGAs in Australia – with 50% of the population speaking a language other than English at home.
- In 2011, that has declined to 31%, just below the Sydney average.
- Older groups of Greek, Italian, Portuguese and Vietnamese migrants have declined (as they have in most areas).
- There are, however, a few emerging groups, notably Nepalese in the last 5 years, and a small increase from Philipines.
- Most migration into Marrickville has been from Australian born, and those from English speaking countries (UK, Ireland, Canada, USA).

# Diversity

- Nepalese are the main emerging birthplace group (apart from UK-born).
- Mainly living in the suburb of Marrickville.
- Also large emerging Nepalese populations in nearby Rockdale, Canterbury and Ashfield.
- Almost all Nepalese arrived since 2006.
- Approximately 30% of the Nepalese population are university students (24% nationwide). They are likely to be renting, and in group households.

# Employment

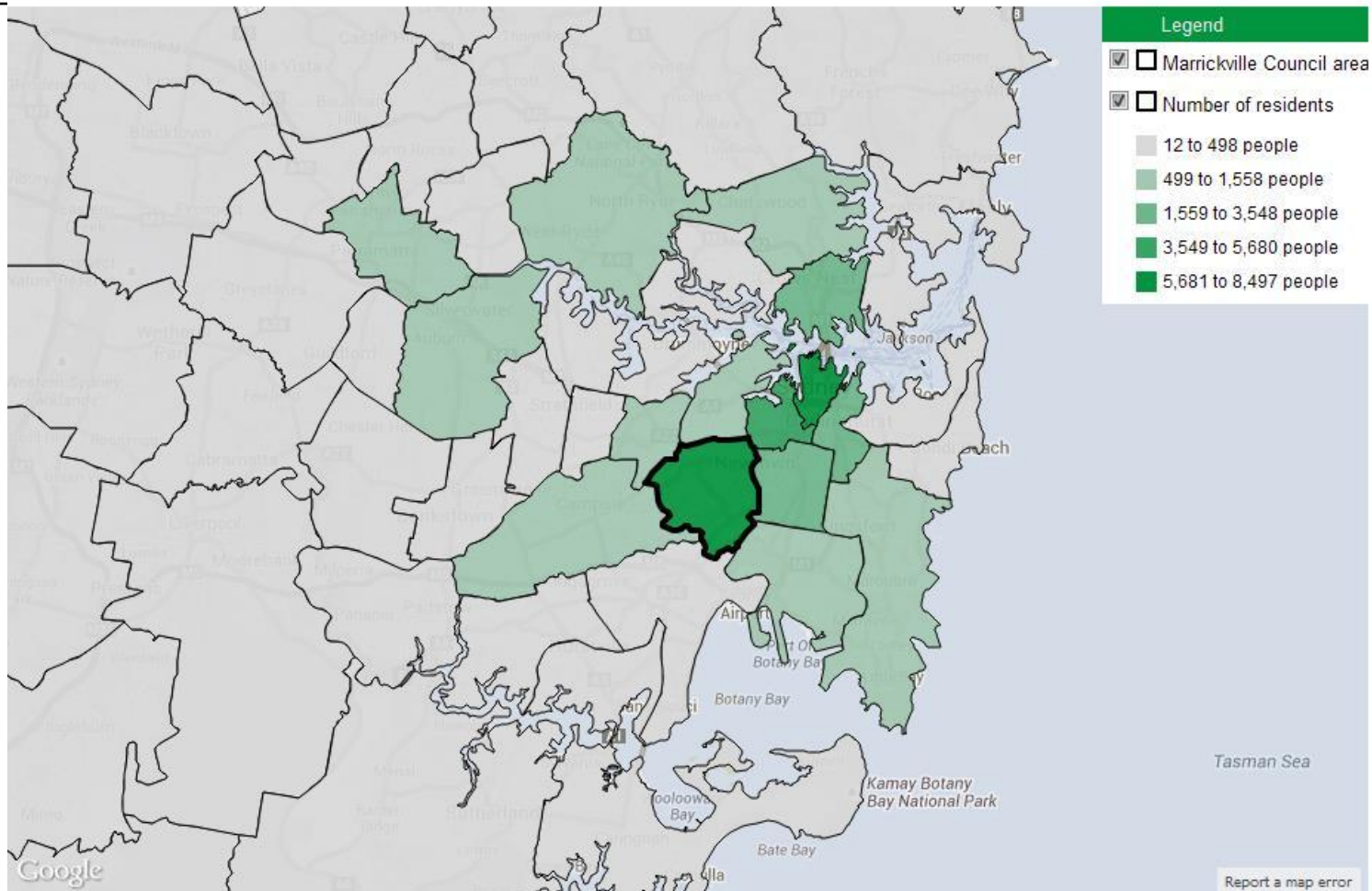
- Unemployment rate in December 2013, 5.8%, Census showed 5.3%. Generally slightly lower unemployment than Sydney average.
- High labour force participation rate (67.8%) but not exceptional (Greater Sydney 61.7%).
- 35.5% of Marrickville residents took public transport to work – the 4<sup>th</sup> highest in the state. Train and bus use increasing a little over 10 years.

# Employment

- 77% of workers leave the area to work.
- Only 13.6% of residents work in Marrickville.
- 40.6% of residents work in the City of Sydney – 4<sup>th</sup> highest percentage of any LGA (after Sydney itself, Woollahra and Leichhardt).
- From the City of Sydney's point of view, Marrickville contributes the 2<sup>nd</sup> largest number of workers of any LGA outside the City (after Randwick).
- Only 24.4% of Marrickville workers also live in Marrickville. Canterbury, Rockdale and Sutherland the largest contributors.

# Employment

## Employment locations of residents by SLA, 2011

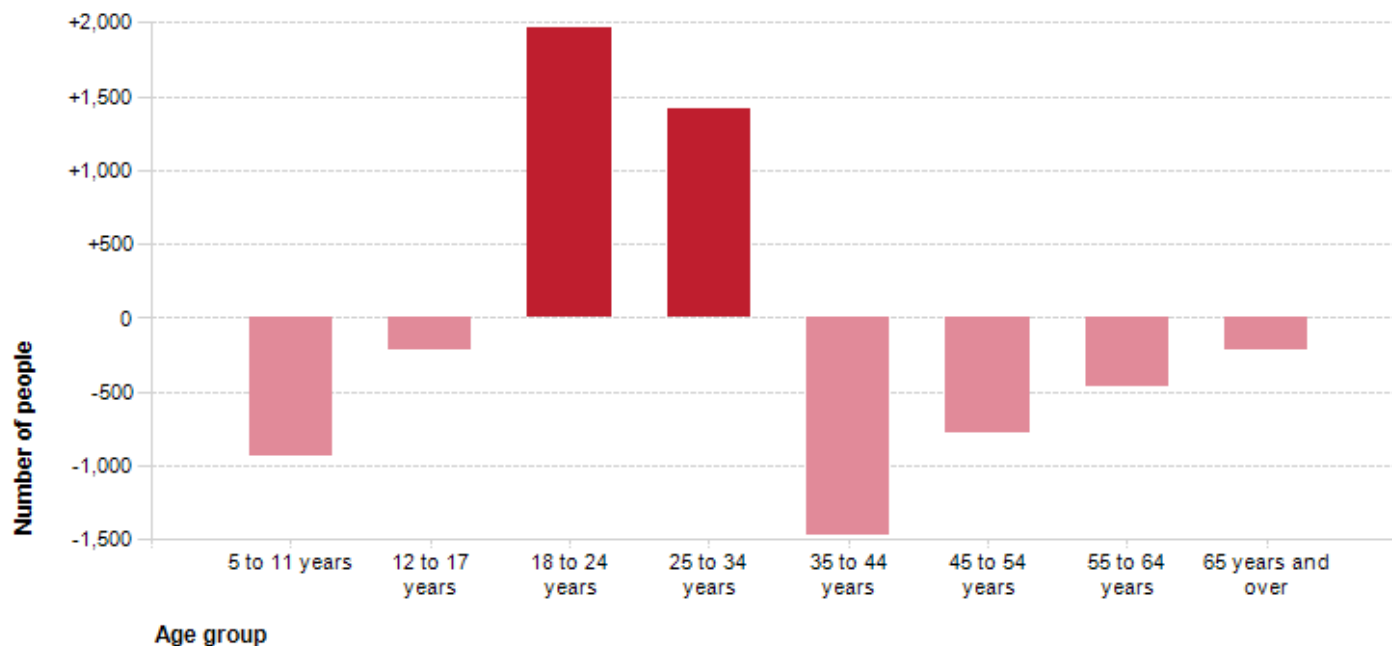


# Migration (within Australia)

- Fairly mobile population – only 45% did not move over 5 years.
- About 7.5% of residents were overseas 5 years ago.
- Loss of people within Australia in older family age groups. Gains of young adults.

## Net migration by age group 2011

Marrickville Council area

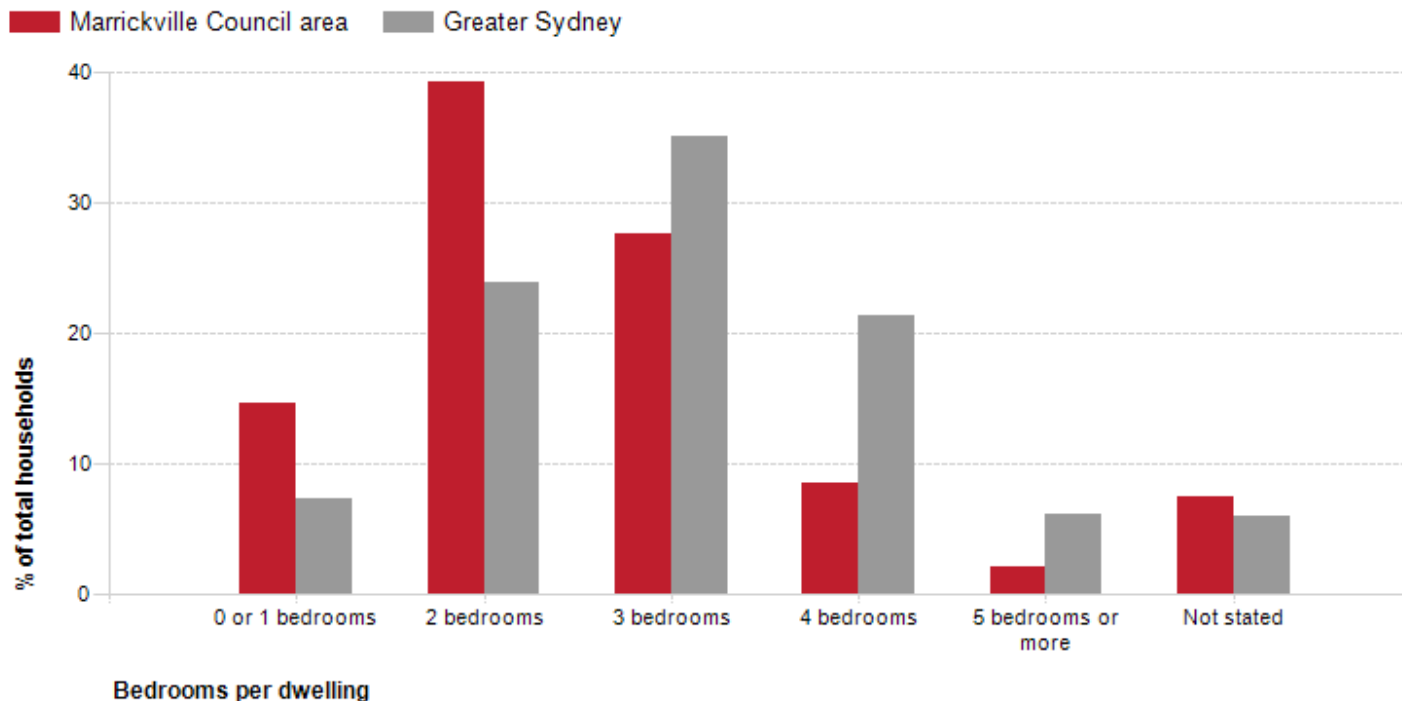


Source: Australian Bureau of Statistics, Census of Population and Housing, 2011 (Usual residents data)  
Compiled and presented in profile.id by .id, the population experts.

# Migration (within Australia)

- Marrickville's smaller housing stock means it will struggle to retain families with more than one child of school age.

## Number of bedrooms per dwelling, 2011



Source: Australian Bureau of Statistics, Census of Population and Housing, 2011 (Enumerated data)  
Compiled and presented in profile.id by .id, the population experts.

# Migration (within Australia)

- People move into Marrickville primarily from:
  - City of Sydney
  - Randwick
  - Leichhardt
- People move out of Marrickville primarily to:
  - Canterbury
  - Bankstown
  - Rockdale

The largest population exchange, either way, was to the City of Sydney, however. Marrickville functions at least in part as an extension of the residential suburbs of the City of Sydney (not the CBD).

# Comparisons to neighbouring areas

- **Leichhardt**

- Higher socio-economic, but the gap is narrowing. Little difference for suburbs such as Petersham and Newtown, but Marrickville still far less affluent.
- Leichhardt had one of the largest increases in 0-4 year olds in the country – in percentage terms it eclipsed Marrickville's increase.
- Professional occupations completely dominant in Leichhardt.

# Comparisons to neighbouring areas

- **Ashfield**

- Similar socio-economic status on average.
- Also attracts young couples and group households
- Much smaller increase in children and families.
- More diversity and increasing – very large population of Chinese.

- **Canada Bay**

- Higher socio-economic status on average.
- Much larger population growth, with the huge Rhodes development driving population increase.
- Rapidly increasing diversity, moving from below the Sydney average to above it.
- A more even mix of home ownership and renting, but renting on the rise.

# Comparisons to neighbouring areas

- **Canterbury**

- Remains a low socio-economic area, with far less gentrification. Much lower rate of professional and managerial occupations.
- Increase in young families with children, similar to Marrickville.
- Canterbury remains a first port of call for migrants, with 48% of population born overseas, and 64% speaking a language other than English at home. Both increasing.
- Renting is dominant but, like Marrickville mortgages are increasing.

# Marrickville Summary

- Population increasing nearly 1000 per year.
- Big increase in young children as young professionals have children in the area.
- Big increase in families with a mortgage, as couples settle in an area they have rented.
- Smaller households – young couples and group households – still dominant.
- A significant jump in socio-economic status. Up 5 places among the 43 LGAs of Greater Sydney over 5 years.
- The highest proportion of female same-sex couples and second-highest proportion of male same-sex couples in the nation.

# Marrickville Summary

- One of the largest declines in cultural diversity in the nation over the last 20 years. Decreases in Non-English speaking. Increases in Australian-born and English speaking countries.
- Marrickville contributes a large percentage of the City of Sydney's workforce.
- Overall, Marrickville's characteristics are shifting, from similar to Canterbury, to similar to Leichhardt and the residential parts of City of Sydney, over time.

# Tools available

## Online now:

Most of this information is sourced from Marrickville's publicly accessible demographic websites, by .id.

All data are available at the suburb level as well as LGA.

Access all your .id sites from the new landing page at

[www.id.com.au/marrickville](http://www.id.com.au/marrickville)

- profile.id® – understand your communities
- atlas.id® - target your services
- economy.id LITE – understand your workforce



# Follow us

- Find out about the latest demographic trends and news.
- Subscribe to our newsletter online.
- Hints & Tips about using your profile and forecast sites.
- Data updates to your sites
- Census & urban planning news
- .id blog – <http://blog.id.com.au>

Twitter: @dotid

# Questions?