

## Attachment 1 List of invitees for the Forum

Organisations Invited to participate in the Forums	
Combined Sports Association South Precinct Chamber of Commerce Gerringong Pensioners Group Dairy Farmers Association Gerroa Community Association Jamberoo Residents & Ratepayers Association Kiama Show Society Tourism Board Beef producers Retired Farmers Gerroa Environmental Protection Society Minnamurra Progress Association Indigenous Younger Families (Gerringong) Friends of the Library Bicycle Users Group Arts Society Jamberoo Future Care Kiama Probus Club Kiama Downs Men's Probus Club Inc Kiama Mixed Probus Club Kiama Seaside Probus Club Gerroa Combined Probus Club Inc. Jamberoo Combined Sports Association Rotary Club of Minnamurra Rotary Club of Gerringong Sunrise CWA Jamberoo Kiama SES	Benedictine Abbey Kiama and Districts Arts Council Kiama Leagues Club Minnamurra Golf Club Gerringong Bowling Club Blue Haven Mayflower Gerringong  Gerringong Medical Practice Kiama Medical Centre Gerroa Fisherman's Club Jamberoo Bowling Club Minnamurra Lions Club Kiama Lions Club Gerringong Sunrise Rotary Minister's Fraternal Terragong Drainage Union St Vincent de Paul, Kiama Community College CWA Kiama Kiama Ladies Probus Inc Kiama Downs Ladies Probus Club Inc Kiama Harbour Combined Probus Club Probus Club of Gerringong Inc. RSL – Kiama/Jamberoo Sub-Branch Kiama District Sports Association Rotary Club of Kiama The Lions Club of Gerringong Apex Club – Kiama Kiama Jazz Club
Organisations Invited to make a Presentation	
Chamber of Commerce Jamberoo R&R Minnamurra Progress Assoc South Precinct Tourist Association Pensioners Assoc Youth Committee Ray White Gerringong	





KIAMA MUNICIPAL COUNCIL  
your council, your community

## Kiama Council Special Rates Variation

### Residents' and Ratepayers' Forum

#### Expression of Interest - Presenter

Please complete this form and return by 22 April 2009 if you are interested in being a part of Kiama Council's Residents' and Ratepayers' Forum as a **presenter**. Before submitting this expression of interest, please read the expectations of presenters overleaf and ensure that you are able to meet the requirements for the panel.

If you are unable to be a presenter at the Residents Forum, then you have the option of contributing by either providing a written submission via Council directly or online by visiting [www.bangthetable.com/kiamarates](http://www.bangthetable.com/kiamarates)

Applicants will be assessed primarily on demographics and diversity of views to ensure an adequate representation of groups, organisations and ratepayers within the Council area.

If you have any questions about the process or application, please contact Chris Quigley on 4232 0414

Name	
Name of group or organisation you are representing (if applicable)?	
Address	
Daytime Phone Number	
Home Phone	
Mobile Phone	
Email Address	
1. Please outline why you would like to be a presenter at the Forum?	
2. Please provide a short overview of what your presentation to the Forum would include:	
3. Please list a maximum of 3 key points you would like to raise at the Forum	
<ul style="list-style-type: none"><li>•</li><li>•</li><li>•</li></ul>	

4. Will you require any audio visual equipment for your presentation?

Signed (If sending by email, your application will be taken as signed)

Date

Please return your completed form to: **Kiama Municipal Council Residents Forum EOI**

By email: [kiama@kiama.nsw.gov.au](mailto:kiama@kiama.nsw.gov.au)

By post: PO Box 75 Kiama NSW 2533

Council is looking for people who represent groups or organisations in the community, or who have a useful perspective as an individual, and who are interested in presenting to the Residents' and Ratepayers' Forum. The Forum will be made up of 60 residents (20, invited by Council, 20 randomly selected from the community and 20 self-nominated through an expression of interest process) who will participate in two community forums to review the application for a special rate variation. The details of the forums are as follows:

**Forum 1**

Date: 2<sup>nd</sup> May 2009

Place: Jamberoo School of Arts

Start: 1pm

Finish: 5pm

**Forum 2**

Date: 9<sup>th</sup> May 2009

Place: Jamberoo school of Arts

Start: 1pm

Finish: 5pm

We are looking for people who are willing to attend **Forum 1** as presenters. Only limited slots will be available for presenters at Forum 2. Each presentation will be limited to 10 minutes with 10 minutes of questions allocated after the presentation.

The purpose of the forums is to provide a representative cross section of residents from across the Kiama Municipality with an opportunity to learn about the proposed rate rise and to provide considered input. This input will go to the Minister for Local Government alongside Council's application.

**Forum 1** will provide information to participants. Presenters representing a range of community groups, organisations and views will make presentations about how they perceive the proposal, and what impact it might have on them. Council will present information about the budget and the long term financial plan. Participants will be able to ask questions and explore the issues in some depth.

**Forum 2**, a week later, will provide an opportunity for further questions and exploration. Some participants will report back on the conversations they have had with other community members. Council will provide more detailed answers to questions that were raised in Forum 1. Finally, all participants will deliberate together before indicating their level of support or otherwise for the special rate variation.

The Forums are not designed to have a decision-making role but to provide thoughtful and considered advice from the community to assist both Council and the Minister to make a decision.

Each forum will be a maximum of four hours in length. If your group or organisation is interested in presenting we encourage you to consider participating as it will allow you to have your say on this important decision.

## Kiama Council Special Rates Variation

### Residents' and Ratepayers' Forum

#### Expression of Interest - Participant

Please complete this form and return to Council by 22 April 2009 if you are interested in being involved in Kiama Council's Residents' and Ratepayers' Forum as a **participant**. Before submitting this expression of interest, please read the expectations of participants document attached overleaf and ensure that you are able to meet the requirements for the panel.

Applicants will be assessed primarily against demographic criteria to ensure adequate community representation on the panel.

If you are unable to be part of the Forum, you have the option of contributing by either providing a written submission via the Council directly or online by visiting [www.bangthetable.com/kiamarates](http://www.bangthetable.com/kiamarates)

If you have any questions about the process or application, please contact Chris Quigley on 4232 0414

Name			
Address			
Daytime Phone Number			
Home Phone			
Mobile Phone			
Email Address			
Occupation if currently working			
Are you a current ratepayer in the Kiama Council area?	Yes	<input type="checkbox"/>	No <input type="checkbox"/>

Please indicate your age range	18 – 25		<b>Acknowledgement</b>  I acknowledge that by signing this expression of interest I may be selected to participate in the Kiama Council Residents' and Ratepayers' Forum as a participant.  I am able to commit to attending the two Forum sessions that will be held on 2 and 9 May 2009 at the Jamberoo School of the Arts
	25 – 34		
	34 – 45		
	45 – 55		
	55 – 60+		

Signed <small>(If sending by email, your application will be taken as signed)</small>	
Date	

Please return your completed form to: **Kiama Municipal Council Residents Forum EOI**

By email: [kiama@kiama.nsw.gov.au](mailto:kiama@kiama.nsw.gov.au)

By post: PO Box 75 Kiama NSW 2533

Council is looking for residents to participate in two community forums to review the application for a special rate variation. The details of the forums are as follows:

**Forum 1**

Date: 2<sup>nd</sup> May 2009

Place: Jamberoo School of Arts

Start: 1pm

Finish: 5pm

**Forum 2**

Date: 9<sup>th</sup> May 2009

Place: Jamberoo school of Arts

Start: 1pm

Finish: 5pm

Participants must be willing to attend **both forums**. The purpose of the forums is to provide a representative cross section of residents from across the Kiama Municipality with an opportunity to learn about the proposed rate rise and to provide considered feedback. This feedback will go to the Minister for Local Government alongside Council's application.

**Forum 1** will provide information to participants. A range of community members will make presentations about how they perceive the proposal, and what impact it might have on them. Council will present information about the budget and the long term financial plan. Participants will be able to ask questions and explore the issues in some depth.

**Forum 2**, a week later, will provide an opportunity for further questions and exploration. Some participants will report back on the conversations they have had with other community members. Council will provide more detailed answers to questions that were raised in Forum 1. Finally, all participants will deliberate together before indicating their level of support or otherwise for the special rate variation.

The Forums are not designed to have a decision-making role but to provide thoughtful and considered advice from the community to assist Council to understand the views of a well-informed community, and to assist the Minister to make a decision.

Each forum will be a maximum of four hours in length.

A committee comprised of four councillors and four community leaders will decide on the composition of the Forum participants. We will let you know by Friday April 24 whether you are successful with your expression of interest.

We encourage you to consider participating as it will be a great way to learn more about your Council's financial planning and to have some input into this important decision.

## Activity Report for Kiama Municipal Council Rates

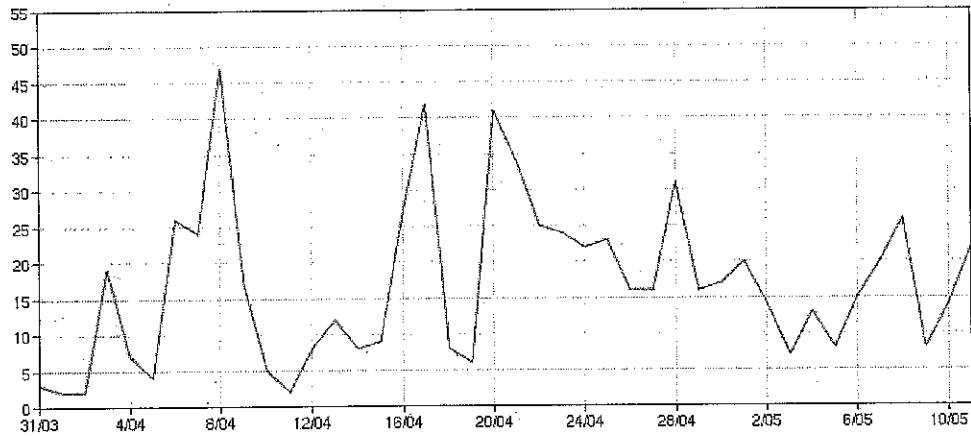
Usage statistics for period from March 31, 2009 to May 11, 2009

### ACTIVITY OVERVIEW

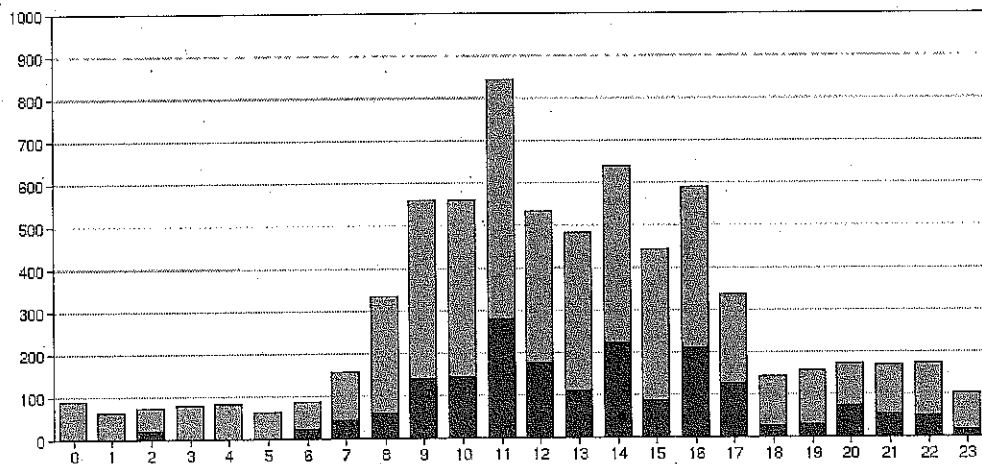
Number of page views	7086
Number of visits	711
Number of unique visitors	472
Number of registered visitors	45
Number of people dis/agreeing with comments	21
Number of dis/agrees with comments	132
Average number of unique visitors per day	11.2
Average stay time	8.49 minutes
Average number of topics read per visit	3.47
Most popular entry point	How satisfied are you with Council's current services and facilities?
Visitors who viewed documents	159
Visitors who viewed FAQs	5
Visitors who undertook surveys	0

### VISITORS BY SUBURB

KIAMA	18
JAMBEROO	3
KATCOMBA	3
WOLLONGONG	2
MINNAMURRA	2
MERIMBULA	1
GERROA	1
ASQUITH	1
EASTWOOD	1
CAMDEN	1
LA PEROUSE	1
GERRINGONG	1
BLACKTOWN	1
MOUNT KEMBLA	1
NEWCASTLE, NSW	1
NORMANHURST	1
REDCLIFFE	1
STRATHFIELD	1
SYDNEY, NSW	1
TARRAWANNA	1
BEGA VALLEY	1
WOLLONGONG, NSW	1
Not specified/Unregistered user access	427



■ registered ■ unregistered



#### TOPIC SUMMARY

Number of unique visitors	472
Number of visitors leaving comments	17
Number of comments posted	51
Number of new topics	10.0
Average number of topics read per visitor	0.60

#### TOPIC BREAKDOWN (10)

How satisfied are you with Councilâ€™s current services and facilities?	
Number of page views	428
New votes for topic	7 (7)
New comments added	7 (7)
New agrees/disagrees on comments	22 (22)
Number of unique visitors participating in this topic	15

If the application for a rate rise is not approved where do you think we could reduce current services?	
Number of page views	540
New votes for topic	12 (12)
New comments added	17 (17)
New agrees/disagrees on comments	48 (45)

Number of unique visitors participating in this topic	22
---	----

<b>What would be your main priorities for future Council expenditure?</b>	
Number of page views	204
New votes for topic	2 (2)
New comments added	3 (3)
New agrees/disagrees on comments	6 (6)
Number of unique visitors participating in this topic	5

<b>How well do you think Council has explained the rationale for the proposed special rate variation?</b>	
Number of page views	268
New votes for topic	5 (5)
New comments added	4 (4)
New agrees/disagrees on comments	12 (12)
Number of unique visitors participating in this topic	10

<b>To what extent are you satisfied that the proposed rate increase is necessary to maintain and enhance the services and facilities Council provides?</b>	
Number of page views	254
New votes for topic	5 (5)
New comments added	4 (4)
New agrees/disagrees on comments	13 (13)
Number of unique visitors participating in this topic	10

<b>Kiama Council Rate Increase Proposal</b>	
Number of page views	370
New votes for topic	5 (5)
New comments added	8 (8)
New agrees/disagrees on comments	18 (18)
Number of unique visitors participating in this topic	12

<b>Bang the Table Webpage is Useless</b>	
Number of page views	193
New votes for topic	1 (1)
New comments added	4 (4)
New agrees/disagrees on comments	7 (7)
Number of unique visitors participating in this topic	5

<b>The real state of Kiama finances</b>	
Number of page views	121
New votes for topic	3 (3)
New comments added	0 (0)
New agrees/disagrees on comments	0 (0)
Number of unique visitors participating in this topic	4

<b>Vote No or Yes for 25% Rate Increase</b>	
Number of page views	69
New votes for topic	4 (4)
New comments added	4 (4)
New agrees/disagrees on comments	8 (8)
Number of unique visitors participating in this topic	9

<b>Proposed Kiama Council Rate Increases</b>	
Number of page views	20
New votes for topic	0 (0)
New comments added	0 (0)
New agrees/disagrees on comments	0 (0)

Number of unique visitors participating in this topic	1
---	---

Note: Numbers in brackets indicate lifetime totals

#### DOCUMENT DOWNLOAD ACTIVITY

Capital & Operational Expenditure Details	69
Questions and Answers	49
Councillor Presentation	32
Residents Panel Application - Participant	19
Forum Presentation	12
Residents Panel Application - Presenter	11
Timeline for Consultation	9
Kiama at a Glance	5
Themes Explored at Forum 1	4

CLIENT: Kiama Municipal Council

PROJECT: Kiama Municipal Council Rates

PROJECT SUMMARY

ID	TOPIC	BY	ADDED ON	COMMENTS	VOTES	AGREE/ DISAGREE
1	How satisfied are you with Council's current services and facilities?	Aleisha Jaffrey	03 Apr 2009	7	7	22
2	If the application for a rate rise is not approved where do you think we could reduce current services?	Aleisha Jaffrey	03 Apr 2009	17	12	45
3	What would be your main priorities for future Council expenditure?	Aleisha Jaffrey	03 Apr 2009	3	2	6
4	How well do you think Council has explained the rationale for the proposed special rate variation?	Aleisha Jaffrey	03 Apr 2009	4	5	12
5	To what extent are you satisfied that the proposed rate increase is necessary to maintain and enhance the services and facilities Council provides?	Aleisha Jaffrey	03 Apr 2009	4	5	13
6	Kiama Council Rate Increase Proposal	gfm	08 Apr 2009	8	5	18
7	Bang the Table Webpage is Useless	gfm	17 Apr 2009	4	1	7
8	The real state of Kiama finances	GerraBoy	21 Apr 2009	0	3	0
9	Vote No or Yes for 25% Rate Increase	GerraBoy	06 May 2009	4	4	8
10	Proposed Kiama Council Rate Increases	R.Dent	08 May 2009	0	0	0

CLIENT: Kiama Municipal Council

PROJECT: Kiama Municipal Council Rates

# HOW SATISFIED ARE YOU WITH COUNCIL'S CURRENT SERVICES AND FACILITIES?

In other words, do you believe you have been getting value for your rates? If not, what additional services/facilities are important to you? If you would like to know what we currently provide, see the Capital and Operational Expenditure below.

ID	COMMENT DETAILS	COMMENT	AGREE	DISAGREE
9390	By: KMC On: 04 Apr 2009 In Response To: 9351	"KMC testing" very happy with KMC's current services and facilities	1	2
9457	By: Tasha On: 13 Apr 2009 In Response To: 9351	No one can deny that all of the items on the Capital & Operational Detail are important, however, Council needs to work to a budget especially at the moment when we are threatened with a recession. Council cannot keep hitting ratepayers and the rates are high enough as it is. I do not think outer Kiama gets value for our rates. Frankly \$950,000. to ruin Manning St was a disgrace.	6	2
9489	By: senseless On: 16 Apr 2009 In Response To: 9457	I agree with that they need to stick to a budget. But Manning street is very nice now instead of an eyesore which is was previous to the upgrade. Wider footpaths are great especially for prams. The locals need a nice place to, not just the tourists.	2	1
9587	By: GerraBoy On: 21 Apr 2009 In Response To: 9351	My favourite service is watching the street cleaner come down our street most public holidays. It's a great money earner for upping that total wage package for the garbos. But it's actually the worst day to sweep the gutters as that's when the holiday houses are full and the street is full of cars. But hey who said this was actually a service that needs to be done.	3	0
9600	By: Mikey On: 22 Apr 2009 In Response To: 9351	By and large the council does provide a reasonable service, but at what cost? The real issue is surely whether they provide the required services efficiently. Our council employee to ratepayer ratio is far too high when compared to other councils and whilst this may be deemed necessary for a boutique operation it does highlight the fact that there is a strong case for amalgamation in order to achieve better efficiency.	1	1
9779	By: tonys On: 02 May 2009 In Response To: 9600	I strongly agree. Council Management need to have a drive around the LGA where their staff are supposed to be working. Just have a look at how many staff are actually working and how many are watching!!!! Just have a look at how many Council work vehicles are parked at employees homes during work hours. Council staff management leaves a lot to be desired. Save money by reducing staff numbers!!!!	1	0
9648	By: retiree On: 24 Apr 2009 In Response To: 9351	KMC may not have increased the already higher than average rates above the guidelines of the government for a number of years, but its total revenue must have grown at a much faster rate over this period, since the number of residences has increased substantially. However, KMC has done nothing to alleviate the effects of this increased population. For example, (a) the urgent need for more parking facilities in the CBD has not been addressed, (b) the basic retail needs for another supermarket, another service station, a greengrocer and butcher et al, requires KMC to work with business and developers and probably to spend money to achieve competition and improved services in the town. All this would benefit all the residents and even the tourists.	2	0

**CLIENT:** Kiama Municipal Council

**PROJECT:** Kiama Municipal Council Rates

**IF THE APPLICATION FOR A RATE RISE IS NOT APPROVED WHERE DO YOU THINK WE COULD REDUCE CURRENT SERVICES?**

To help us to budget effectively and determine which services and facilities are important to the community, we would like to know if there are any services where you believe expenditure can be reduced. Please review the list of projects and services to help consider your answer to this question.

We are currently using reserve funds to finance many of our services to the community and to maintain and build new infrastructure. We believe it is necessary to apply for this rate variation to ensure the long-term viability of the services and facilities we provide.

The Minister for Local Government has the final say on whether a general rate variation is approved.

ID	COMMENT DETAILS	COMMENT	AGREE	DISAGREE
9426	By: senseless On: 08 Apr 2009 In Response To: 9353	By reducing the staff Council vehicles to all four cylinder and all the same models from the Mayor down. Reduce the amount of consultants Council use, as I am sure Council has enough experienced paid staff that could do the same work as a consultant. Maybe look at gaining more funding like Council has for most of the community services area of projects which isn't costing ratepayers to have these services. Reduce the amount Council give out as donations and grants. I don't think ratepayers should be funding not for profit or profit organisations/groups/individuals for events they want to hold in Kiama area, if an organisation/group/individual want to hold events in the area, then they should be cashed up themselves to do pay for all cost associated with the event they are holding, even fund raising events.	11	0
9777	By: tonys On: 02 May 2009 In Response To: 9426	Council has not done anything to become "green" with relation to its motor vehicles.  Why \$900,000 spent on motor vehicles last year and not one of them LPG. Sure LPG cost about \$1200 more per car to purchase, but the ongoing cost reduction will always outway that small amount. LPG can also be fitted to diesel, some cost reduction could also be obtained with the trucks  OH, by the way, what has happened to the new electric bikes that Council made so much fuss about 12 months ago. Other than all the noise made about them way back then, they havnt been seen since. Probably needed to be registered but as usual no-one would have looked into that first.	0	0
9430	By: gfm On: 09 Apr 2009 In Response To: 9353	The council has identified the top costs drivers now they need to act by reducing the costs for maintenance, labour they have authority to act if they want to. The federal govt is contributing to new infrastructure and maintenance of infrastructure so there is no need.	7	0
9516	By: gfm On: 17 Apr 2009 In Response To: 9353	In answering this question of services to be reduced any expenditure over a Million dollars remove 5% from their budgets.	5	0
9517	By: gfm On: 17 Apr 2009 In Response To: 9353	The council spent nearly \$4.5m on library services wow !! am sure there is the necessary cuts in this service alone to make up any deficit	4	0
9586	By: GerraBoy On: 21 Apr 2009 In Response To: 9353	There needs to at least a 5% cut in spending. Kiama also needs to get a backbone and play hard ball with the State govt over cost shifting. Withdraw lots of tourist support services and stare the government down. But they can't as Sandra knows that the council is no longer financially viable and if they cause any real trouble the state government could simply amalgamate the council and then what they all do for a lifestyle.	2	1
9706	By: senseless On: 28 Apr 2009 In Response To: 9353	Contributions and Donations could be reduced. In 2007 council gave away \$146,000 and in 2008 gave away \$220,000 according to the annual report on council's website. As I commented before why do our rates pay for donations to festivals, etc. Shouldn't people organising any type of event whether fund raiser or for profit be fully responsible for paying all costs themselves instead of expecting council to contribute to them. I fully disagree with my rates being used for any type of contribution or donation. council need to stop being a "yes" man council. Get tough with people and say NO. The town will not fall apart if you say NO to these people, the events will probably still go ahead, but without so much profit being made.	4	0

CLIENT: Kiama Municipal Council

PROJECT: Kiama Municipal Council Rates

ID	COMMENT DETAILS	COMMENT	AGREE	DISAGREE
9717	By: Roberts On: 28 Apr 2009 In Response To: 9353	Rather than increasing rates Council should be considering ways to cut expenditure. Council's structure shows that for a small Council there are a number of top management positions compared to other Councils in the area. Surely consideration should be given as to how these can be restructured and cut back before rate increases are imposed on the community.	2	0
9718	By: mic On: 28 Apr 2009 In Response To: 9353	Kiama Council is a local business and must therefore think like a business when times get tough: Go through all outgoing costs and cut back where there are excesses, outsource work where it is most cost efficient. I know there are some very qualified and experienced people in council employment so PLEASE use them and cut out consultants.	3	0
9776	By: tonys On: 02 May 2009 In Response To: 9718	Whilst Kiama Council "is a business" this is where they get it so wrong. Kiama Council competes against other business operators within the Kiama L.G.A. Local business cannot compete with Council, as Council has special tax free purchasing power that private enterprise does not have. Kiama Council at its own admission competes on many fronts. Rubbish removal, building and carpentry, property development, transport provision are only part of the business activities that Council duplicates.	0	0
9774	By: tengu On: 01 May 2009 In Response To: 9353	Do we really need green bins to collect vegetation waste? Can we replace these with compost bins, immediately making ourselves a more green community and also reducing a significant cost of collecting this biodegradable waste? Also any festivals & events (which should be encouraged!) that are held in KMC should be revenue streams for the council, not costs. Finally, dare I say how about parking meters (for the main street / weekends only)?? Capture more of those tourist dollars!!	0	1
9778	By: tonys On: 02 May 2009 In Response To: 9353	Council has not done anything to become "green" with relation to its motor vehicles.  Why \$900,000 spent on motor vehicles last year and not one of them LPG. Sure LPG cost about \$1200 more per car to purchase, but the ongoing cost reduction will always outway that small amount. LPG can also be fitted to diesel, some cost reduction could also be obtained with the trucks. When council owned the gas works site and paid 10 cents per litre for the gas, they still did not have lpg vehicles.  OH, by the way, what has happened to the new electric bikes that Council made so much fuss about 12 months ago. Other than all the noise made about them way back then, they havnt been seen since. Probably needed to be registered but as usual no-one would have looked into that first.	1	0
9780	By: tonys On: 02 May 2009 In Response To: 9353	Council could reduce current services in many ways. Stop duplicating services, stop competing with existing local business. Kiama Council needs to look at why it spends \$431.21 per capita on Community services. The truth is that probably over half of the L.G.A are not recipients of any community service benefits, so therefore the cost for those that do would be over \$1000. per person. Council really needs to reduce these services. Surely Kiama has good private taxi and bus companys. In other LGAs Councils broker out to local transport providers all their transport needs. This also would stop Councils need to purchase and use buses for Community Transport etc. Transporting Community transport people in Council cars comes at a cost as well. I am sure that local transport people could offer this service at a lesser cost than Council. Council has to cut costs!!!	2	0
9792	By: senseless On: 04 May 2009 In Response To: 9780	Council's Community services take in a broad range of services, including the library, youth, disabled and elderly along with the carers of these disabled and elderly people. The majority of funds comes from federal and state funding not ratepayers, maybe Council should be up front about this fact. Community Services doesn't cost the ratepayers that much. As for transport would the local bus company drop off at the doctors door see the person inside if needed and go and pick the person up from inside the doctors, I know I appreciate this service for an elderly parent.	0	0

**CLIENT:** Kiama Municipal Council

**PROJECT:** Kiama Municipal Council Rates

ID	COMMENT DETAILS	COMMENT	AGREE	DISAGREE
9836	By: tonys On: 07 May 2009 In Response To: 9792	<p>The way the information is supplied it suggests that Council funds or has a funding input to these services.</p> <p>I'm not sure how much is not much, I'm only going on the actual figures as supplied by Council.</p> <p>I dont know the answer to your question about the bus company providing the same level of service, however when a free or near free service is provided, the question will not be asked of the bus or taxi company if they can provide the service. All services come at a cost, it doesnt matter who provides them.</p>	0	0
9840	By: R.Dent On: 08 May 2009 In Response To: 9353	<p>As self funded retirees, our net worth as well as our income has decreased in the current financial climate. Our only recourse is to alter our lifestyle to match our new circumstances. Council should also be looking at their budget and working out ways to make economies. Expecting ratepayers to make up any deficit in their budget is too easy and makes life even more difficult for the community. Council could look at areas such as staffing levels, projects such as the Black Beach viewing platform which is totally unnecessary and use of Council motor vehicles. Council's proposed increase in rates equates to over 24% at the end of four years "the increase should be restricted to the pegged 3% per annum.</p>	2	0
9863	By: concernedresident On: 10 May 2009 In Response To: 9353	<p>It is disturbing to see councilors using the media to push for approval from the community for an above rate increase. It was repoted in the Independant 6/5/09 from 1 councilor in the letters section of the paper that a person was wrong to claim such a high increase is being sought by the council. The bottom line is if management is claiming a 3% increase each year for the next 4 yrs, above the recommendation, we must be in a very poor financial state. Looking at the operational figures there are also alarming questions to be answered. It is easy to hold your hat out and say you need more money, but the council must so leadership and restraint, neither of these can be shown with hand out. As a business they need to show where costs can be reduced, this approach could be more understandable for rate payers. Also 1 other question, if we need to show restraint, how much is it going to cost to send 2 green members on behalf of council for the conference in Sydney about climate change?</p>	0	0

**CLIENT:** Kiama Municipal Council

**PROJECT:** Kiama Municipal Council Rates

# WHAT WOULD BE YOUR MAIN PRIORITIES FOR FUTURE COUNCIL EXPENDITURE?

With the proposed rate increase, we can continue to plan better services for Kiama residents both now and into the future. While we have a long-term plan for sustaining services and infrastructure, it is now clear that to continue to provide the current level of services, we need to apply for a rise above the state rate pegged percentage. Please refer to library and in particular the Capital and Operational Expenditure document to help identify your spending priorities.

We would like to know what you think the priorities should be for us in determining how rates can be spent in the future for the sustainability and improvement of the Kiama Council area.

ID	COMMENT DETAILS	COMMENT	AGREE	DISAGREE
9543	By: senseless On: 20 Apr 2009 In Response To: 9354	Priorities should be geared for the residents of the municipality, the tourist will come anyway. The residents should be your main priority.	4	0
9591	By: GerraBoy On: 21 Apr 2009 In Response To: 9354	This use of the royal "we" is totally inappropriate.  Council workers should have no opinion of what services are provided. They are public servants employed to do a job under the direction of an elected government.  The above note goes to the heart of why this process is fundamentally flawed and all about job protection first and last.	2	0
9611	By: senseless On: 22 Apr 2009 In Response To: 9591	I suppose you don't have an opinion about your job or if retired you never had an opinion in your line of work. Council workers are ratepayers too you know, and if not in Kiama then in some other area. I know I have an opinion about my job and work even though not a public servant, but then we are all servants of some kind.	0	0

CLIENT: Kiama Municipal Council

PROJECT: Kiama Municipal Council Rates

HOW WELL DO YOU THINK COUNCIL HAS EXPLAINED THE RATIONALE FOR THE PROPOSED SPECIAL RATE VARIATION?

Do you think Council has presented a good case for the special rate rise?

ID	COMMENT DETAILS	COMMENT	AGREE	DISAGREE
9431	By: gfm On: 09 Apr 2009 In Response To: 9355	Woefully, lame reasons like no increase for 25 years an indication of the excess we have been paying. Now it is time for the rate payers to recoup, all our neighbouring councils have had an increase so what! The increase has been compared to case a beer just unacceptable. Why not tell how they cut costs instead of giving up and going back to rate payers	6	1
9530	By: Maths On: 20 Apr 2009 In Response To: 9431	Maybe my maths are in error but my calcs reveal the increase is up 26.24% if compounded over 4yrs & that represents more than a case of beer.If my calcs are correct the amount of 26.24% increase hss not been advertised, misrepresentation??	3	0
9588	By: GerraBoy On: 21 Apr 2009 In Response To: 9355	The explanation offered is just basically insulting to ratepayers. But they don't really care about what spin they use. It's just an excuse to keep lots of people in jobs that should be eliminated. All the while giving Sandra something to do and the Greens a taste of power. Which our dear future great leader Ben has taken too with gusto.	2	0

CLIENT: Kiama Municipal Council

PROJECT: Kiama Municipal Council Rates

TO WHAT EXTENT ARE YOU SATISFIED THAT THE PROPOSED RATE INCREASE IS NECESSARY TO MAINTAIN AND ENHANCE THE SERVICES AND FACILITIES COUNCIL PROVIDES?

Kiama provides a high level of services to its community. We would like you to consider whether you believe increasing the rates is reasonable based on what you know about our facilities and services.

ID	COMMENT DETAILS	COMMENT	AGREE	DISAGREE
9458	By: Tasha On: 13 Apr 2009 In Response To: 9356	I don't believe we need a rate increase. We should have a high level of services. We pay high rates.	6	1
9590	By: GerraBoy On: 21 Apr 2009 In Response To: 9356	"Kiama provides a high level of services to its community"  - says who.  Those that provide the services or those that receive the services.  I'm sick of hearing these self serving justifications for jacking up rates.  Yes my garbage gets collected and the potholes get filled in, but that's just basic services. And besides the garbage service is paid for via a specific line item in the rates.  Most of the services are for a small part of the population who use them and expect them to be provided free or low cost and that the rest of community should pay for them. Cause... cause ... it's a community.	3	1
9612	By: senseless On: 22 Apr 2009 In Response To: 9356	We may not all use all of the services provided but as ratepayers we all do use services that our rates pay for. Council covers a range of services for all ages etc. The issue is are we prepared to cop a rise in these rates. It could be better to try and come up with constructive suggestions that will be good for all of us and maybe not hit us in the pocket as Council is suggesting.	1	0
9782	By: tonys On: 02 May 2009 In Response To: 9356	I /We are totally against any rate rise at all!!! Kiama Council and Councilors really need to have a look at whats going on in the world around us. We are in recession, jobs are being lost everywhere, car manufacturers are going bankrupt, business surveys spell out only doom and gloom. The worst economy for over 60 years!!  Wake up Kiama Council, stop being so greedy and give the rate payers that fund you a break.  I cannot / will not be making any extra payments for my rates!!!	1	0

CLIENT: Kiama Municipal Council

PROJECT: Kiama Municipal Council Rates

### KIAMA COUNCIL RATE INCREASE PROPOSAL

The information reported in the media for the rate increase, included the following inadequate reasons, all neighbouring councils have done the same, the rate increase is only the cost of a case of beer, we need to maintain our services up to the very high standards people expect. The federal govt has already approved extra money for the infrastructure maintenance and now the council still want more. I would like to see the main costs drivers cut further and no rate increase at all if these are the only reasons. The other piece I dont understand is the percentage increase compounded year on year ?

ID	COMMENT DETAILS	COMMENT	AGREE	DISAGREE
9456	By: Tasha On: 13 Apr 2009 In Response To: 9422	I'm a pensioner and the increase if allowed will cause me and other pensioners hardship. As it is Kiama's rates are too high. I've lived in two locations in Kiama Downs since 1996 where there hasn't been concrete footpaths. When my daughter visited she had to wheel a pram on the road and in damp weather your shoes get wet so once again one walks on the road. Not a safe option! Kiama Council is only concerned about the town centre.	5	0
9468	By: gandy On: 14 Apr 2009 In Response To: 9422	A small increase would be ok, that is if it didn't go to more amenities for tourists. A new amenities block at the rock pool is long overdue, but a viewing platform at Black Beach is going too far. People love to visit this town for it's natural beauty, not to see man made structures in front of all the views, and as for footpaths.....more for the residents and not the tourists would be more appropriate.	6	0
9716	By: Roberts On: 28 Apr 2009 In Response To: 9468	On the surface it may look like a small increase but over 4 years it equates to 26% increase	0	0
9553	By: GRAI On: 20 Apr 2009 In Response To: 9422	As a long suffering Kiama rate payer of over 20 years, I would regretfully expect to see economy of scale implemented by simply amalgamating KC with an adjoining council (Shell Harbour) and getting rid of the excesses KC	2	0
9589	By: GerraBoy On: 21 Apr 2009 In Response To: 9422	Yes we need to be amalgamated. But I would vote for Shoalhaven as it is a rural area in keeping with Kiama. Shoalhaven is the future of all councils where economies of scale can deliver a major increase in service quality. And let's face it - it would take one election cycle for the Kiama area and a few other like areas to take control of that council. Which should make the Greens happy - but I guess that's a complex concept beyond one's own navel.	0	0
9715	By: Roberts On: 28 Apr 2009 In Response To: 9422	I am opposed Kiama Council's proposal to increase council rates by 6.5% per year for the next four years. I don't think a number of people in the community realise the increase is 6.5% per year, which over 4 years equates to a 26% increase. This is a huge increase for ratepayers who already pay the third highest rates in the State. This increase will have a large impact on already tight budgets for the taxpayers of Kiama. Young families are already finding it hard to manage day to day living in this financial crisis without another increase. How are young families going to be able to afford to live in Kiama? Young families in Kiama spend money in this area to keep the Kiama economy operating. If it becomes more expensive to live in Kiama many young families will be forced to leave which will affect the long term future of many Kiama businesses. Rather than increasing rates Council should be considering ways to cut expenditure. Council's structure shows that for a small Council there are a number of top management positions compared to other Councils in the area. Surely consideration should be given as to how these can be restructured and cut back before rate increases are imposed on the community. The proposed rate increase is a brave move for newly elected Council representatives and it begs the question as to whether these representatives will be re-elected at the next Local Government elections.	2	0
9805	By: GerraBoy On: 06 May 2009 In Response To: 9715	Clearly this has been planned by Sandra and the Greens for sometime. They obviously planned to make an all out effort after the 2008 council elections. Today I read in the Advertiser that Sandra is giving away \$500 to local groups to make exhibits for the 150th anniversary of KMC. It's our money - not yours - that you are spending. When will you understand that basic fact of life Sandra and Ben. Stop treating ratepayers as children needing giveaways - to be happy - like monkey's in a sideshow.	2	0

**CLIENT:** Kiama Municipal Council

**PROJECT:** Kiama Municipal Council Rates

ID	COMMENT DETAILS	COMMENT	AGREE	DISAGREE
9846	By: R.Dent On: 08 May 2009 In Response To: 9422	As self funded retirees, our net worth as well as our income has decreased in the current financial climate. Our only recourse is to alter our lifestyle to match our new circumstances. Council should also be looking at their budget and working out ways to make economies. Expecting ratepayers to make up any deficit in their budget is too easy and makes life even more difficult for the community. Council could look at areas such as staffing levels, projects such as the Black Beach viewing platform which is totally unnecessary and use of Council motor vehicles. Council's proposed increase in rates equates to over 24% at the end of four years - the increase should be restricted to the pegged 3% per annum.	1	0

CLIENT: Kiama Municipal Council

PROJECT: Kiama Municipal Council Rates

# BANG THE TABLE WEBPAGE IS USELESS

I read in the Mercury this week that Kiama Council is trying to motivate people to express their views to the proposed rate increase via bang the table web page. To date the take up is at best disappointing. Why? In my opinion the NSW Labour Govt and Kiama Council will proceed with the approval regardless. Both levels of Govt dont give a tinkers cuss if rates go up. It is now a stampede by all councils to bypass rate pegging and by all accounts 100% successful so why bother protesting. I pay in excess of \$1000 for what ??? nothing.

ID	COMMENT DETAILS	COMMENT	AGREE	DISAGREE
9542	By: senseless On: 20 Apr 2009 In Response To: 9515	Look around the area and that is where your money is going. It doesn't look like a lot of nothing to me. Do you get your bins emptied, do you drive on pretty good roads, I could go on and on. Maybe if people used this avenue of a forum, then maybe some constructive answers could be given to help save us money on our rates. If council didn't give a tinkers then they would not be paying out money for this 'bang the table' exercise to get the communities feelings on a rates increase or ways to avoid it.	1	1
9554	By: gfm On: 20 Apr 2009 In Response To: 9542	Thankyou for your reply about the money, I haved lived in this area for 22 years and it is pretty bad that they have had significantly more money to spend as a result of excess rates, but they do empty the garbage that is good and I pay for that!. The council have the one of the highest rates in NSW, that is not good, and now they want more. Secondly the question I ask what are the other options instead of a rate increase. The informatin provide via this website and others is at best a casual. A better explaantion of what costs they have tried to cut instead of saying the community has to decide they are the leaders stand up and lead and say well if we dont get the rate this is what we propose.	0	0
9705	By: senseless On: 28 Apr 2009 In Response To: 9515	Yes they should lead and they should stop trying to please everyone and stop being a "yes" council to everyone's little whim. No is a good reply to the "I want's" of this town. I agree council need to lead and they need to start taking a heavy hand to the budget and really make it work with what they have got. Let the charities and the festival organisations fend for themselves as we all don't want our hard earned money that pay our rates used for festivals, save the this or save the that of this place or other areas. If residents want to contribute to charities, festivals etc then they should do so out of their own pocket and not council. Why do council even have a donation policy/fund or separate funds for the larger festivals and services of this town.	3	0
9775	By: tengu On: 01 May 2009 In Response To: 9515	I don't believe this website is useless - gives everyone a chance to be heard and all comments to be recorded regardless.	2	0

CLIENT: Kiama Municipal Council

PROJECT: Kiama Municipal Council Rates

### VOTE NO OR YES FOR 25% RATE INCREASE

This thread is to record a yes or no for the special rate variation of 6.5% each year for the next four years.

That will equal at least one quarter more of your current rates each year.

i.e.  $1500 \times 1.25$  will be your apx rates in 2013 or  $\times 1.065$  4 times to get each years apx new rate.

The usual rate increase is 3 percent and would be  $\times 1.03$  (A helpful tip for your future budget planning:)

You need to create any username you like - login - and go to reply and record your views.

Don't be scared - speak up - or they will use your silence as a yes vote by default.

ID	COMMENT DETAILS	COMMENT	AGREE	DISAGREE
9807	By: GerraBoy On: 06 May 2009 In Response To: 9806	<p>I vote No.</p> <p>My reasons and recommendations are:</p> <p>1/ Increase revenues</p> <ul style="list-style-type: none"> <li>+ increase council land sales via reduced prices and layaway land purchases. This will drive down all local land prices increasing home building and ratepayer numbers.</li> <li>+ Complete review of user prices where currently levied to achieve full cost recovery.</li> <li>+ Sell PL insurance to users of council properties.</li> </ul> <p>3/ Cut spending</p> <ul style="list-style-type: none"> <li>+ Suspend all donations and all non essential grants programs.</li> <li>+ Eliminate cross subsidies of non essential services.</li> <li>+ A complete independent review of council work practises to deliver current services.</li> <li>+ Suspend all non essential overtime.</li> <li>+ Outsource to part time contract workers management of all community programs. Freeing up expensive council staff from the endless demands placed on council staff to look at the latest pet project from one of our dear councilors.</li> <li>+ How many ideas does council actually need to cut spending. I want a percentage!</li> </ul>	3	2
9838	By: R.Dent On: 08 May 2009 In Response To: 9807	<p>Time to show restraint. Kiama Council must tighten its budget &amp;€" cut back on staff, cut back on duplicated social services, increase profits out of Bluehaven and holiday units or sell them. Council should learn to work within a budget (the public is not a cash cow). No viewing platform at Black Beach (unnecessary cost and ugly). Any increase should be limited to the pegging limit of 3%.</p>	1	0

**CLIENT:** Kiama Municipal Council

**PROJECT:** Kiama Municipal Council Rates

ID	COMMENT DETAILS	COMMENT	AGREE	DISAGREE
9833	By: tonys On: 07 May 2009 In Response To: 9806	<p>I vote no.</p> <p>I also agree with most of your comments.</p> <p>But would like to add:</p> <p>Reduce the number of Council staff by having a drive around and see where Council supplied work vehicles are parked during work hours.</p> <p>reduce the amount of duplicated services where Council is in competition to local rate payers that run business in the LGA.</p> <p>Only renew Council cars at every second or third renewal period and replace them with LPG vehicles.</p> <p>Stop Council employees having a lease back vehicle supplied by Council and in particular ratepayers should not fund Council supplied cars for employees to take away on holidays with them.</p> <p>Stop allowing Council cars to be used for Community vehicles, where passengers travel for a token fee. This type of transport should be funded by Council and the passenger and provided by a local transport company.</p>	1	1
9882	By: aunty vick On: 11 May 2009 In Response To: 9833	<p>I know this is a cheap way to get community input.</p> <p>However I hope Council dont rely on this forum for polling purposes.</p>	0	0



## Attachment 5 (A)

### Attendance Forum 1

Name	Organisation
Alan Hunter	Beef Producers
Alix Rainnie	Mayflower Gerringong
Anthony Langlois	Chamber of Commerce
Janelle Walker	Bicycle Users Group
Jim Webb	Kiama Lions Club
John Phelan	Jamberoo Residents & Ratepayers Association
John Pritchett	Minnamurra Environment Group
Len Bolden	Kiama Probus
Lisa Pyle	Gerroa Community Association
Lynne Strong	Dairy Farmers Association
Michael Cole	Terragong Drainage Union
Jack Maude	Kiama Retirees
Roy Schmidt	Chamber of Commerce
Tim Cleal	Jamberoo Future Care
Trevor Cuthbertson	South Precinct
Richard Gan	
Sharon Grady	
John Vining	
Victor Pascoe	
Mr Gilchrist	
Neil Miller	
Norman Fowler	
Pam Rowe	
Paul Berriman	
Ray Shenton	
Rus Beatty	
Stuart Kelly	
Ken Rae	
Lesley McKay	
Barry Leaton	
Barry McNicoll	
Catherine Cairns	
Bob Barnes	
Catherine Cairns	
Clive Emery	
Colleen Rae	
Dave Robertson	
Gwen Gehringer	

Gwenda Hammond	
Ian Heggie	
Joan Toumlin	
John Hinton	
Andrew Knowlson	Kiama Council
Bryan Whittaker	Kiama Council
Chris Quigley	Kiama Council
Clare Rogers	Kiama Council
Clr Ben van der Wijngaart	Kiama Council
Clr Brian Petschler	Kiama Council
Clr Neil Reilly	Kiama Council
Clr Peter Bowman	Kiama Council
Clr Sandra McCarthy	Kiama Council
Michael Forsyth	Kiama Council
Max Hardy	Twyfords Consulting
Stuart Waters	Twyfords Consulting

## Attachment 5 (B)

### Attendance at Forum 2

Name	Organisation
Alan Hunter	Beef Producers
Alix Rainnie	Mayflower Gerringong
Andrew Knowlson	Kiama Municipal Council
Anthony Langlois	Chamber of Commerce
Tim Cleal	Jamberoo Future Care
Trevor Cuthbertson	South Precinct
Sandra Hainsworth	Gerringong Sunrise Rotary
John Phelan	Jamberoo Residents & Ratepayers Association
Jack Maude	Kiama Retirees
Janelle Walker	Bicycle Users group
Jim Webb	Kiama Lions Club
Lynne Strong	Dairy Farmers Association
Barry Leaton	
Barry McNicoll	
Bob Barnes	
Catherine Cairns	
Clive Emery	
Colleen Rae	
Darrell Clingan	
Dave Robinson	
Geoff Boxsell	
Ian Heggie	
Joan Toulmin	
John Vining	
Lindsay Sharp	
Mr Gilchrist	
Neil Miller	
Norman Fowler	
Pam Rowe	
Paul Berriman	
Ray Shenton	
Sharon Parker	
Victor Pascoe	
Hazel Cooper	
Patricia Slenton	
Peter Hainsworth	
Tom Cooper	
Chris Quigley	Kiama Municipal Council

Clr Ben van der Wijngaart	Kiama Municipal Council
Clr Brian Petschler	Kiama Municipal Council
Clr Monique Dare-Ward	Kiama Municipal Council
Clr Neil Reilly	Kiama Municipal Council
Clr Sandra McCarthy	Kiama Municipal Council
Clr Trevor Fredericks	Kiama Municipal Council
Max Hardy	Twyfords Consulting
Stuart Waters	Twyfords Consulting
Michael Forsyth	Kiama Municipal Council

## Attachment 6

### Residents' and Ratepayers' Special Rate Variation Forum

Saturday 9 May 2009

#### Group Responses to the Questions:

1. What arguments have you heard against the SRV?
2. What arguments have you heard in support of the SRV?
3. If SRV is not approval what assets or services should Council review/reduce?

#### AGAINST

- Effect on those on fixed incomes – Pensioners & Retirees
- In turbulent times – defer for 12 months for an efficiency audit.
- Consultation is short opportunity to involve experienced community members to assist Council. (other processes to be investigated, e.g Participatory Budgeting, zero based budgeting)
- Display self help before asking for Government support.
- Noted some people were self motivated not acknowledging the community interest/needs.
- Outside staff could use their time better / better supervision.
- Identify where services are making money or not.

#### No Rate Increase

- Need ongoing consultation to make an informed decision, will need to look at:
  - programs
  - services
  - facilitiesSome concern about expertise.
- We must do statutory things
  - Meet our obligations under grants.
  - Need to do things that require a response (OH&S, Climate Change Risk Assessment)
  - Need to review discretionary activities.
- Need a prioritised list of activities & programs
- Review service levels, eg street sweeper.

#### Reconsider in 12 months

##### But until then:

- Extraneous lighting, eg. Christmas lights.
- Walking trails etc could be put on hold.
- Look at reform to public liability insurance maybe pool with other Councils

##### For

- Maintenance program should start now not 24 months.
- If we keep dipping into our reserves we will have nothing left.

##### Against

- Economic Climate – poor timing – world downturn

- The ability to pay rates at all! – inability to qualify for hardship policy.
- COULD force shop/business closures.

#### For

- Ensure asset maintenance and renewal.
- Importance of maintenance services.
- Sectors of the community will suffer without increase.
- Council provides a wide range of services.
- Hardship policy does allow difficulties to be addressed.
- Community is committed to self help and values their independent Council.
- Allows for provision of community infrastructure and projects. (community input of funds, i.e matching funds for grants).

#### Stage I

(Sandra, Ian, Tim, Lindsay)

#### Against

- a) Have we looked sufficiently behind the numbers to justify the % age increases.
- b) 10 yr plan does not have clear links to the budget.
- c) The very fact that the budget is completely balanced raises a question: Has it been reverse engineered? (start with the answer work back to the amount increases)
- d) Would financial crisis impacts impact on pensions etc – self retired pensioners, Centrelink.
- e) Amalgamation
- f) Reduces the pressure on Council to be more efficient.

#### For

- g) Potential decline in % age of rate cap could be severe (CPI declining!) big resourcing risk.
- h) Asset maintenance and high level of service / community well being could be badly affected if investment not maintained 2010-2015.
- i) Improved planning processes, plus reasonable fact – based rate rise = make Kiama's community experience even better.

#### Stage II

(Sandra, Ian, Tim, Lindsay)

If application not approved what do we do?

1. If not full S.R Levy – Go back to basics.
2. "Participatory Budgeting" and expert resident participation to look at figures and suggest options.
3. Link 10 year plan to actual budgetary figures – what costs more and why?
4. Process management & other techniques.
5. Run businesses for more profitable results (=increase of reserves)
6. Present a range of options to the ratepayers.

If application is not approved how should Council respond?

- Council should determine and recommend cuts.
- Prefer not to see reduction in services if possible.

#### Against

Pensioner rebate has not increased.

- Some capital works/renewals could have been better designed in relation to motorists.
- World recession impacts and timing.

#### Favour

- Maintaining financial position and assets.

#### 1) Against

- If NSW Government thinks 3 ½% is sufficient – so should Council.
- Too much too quickly.
- Should look at more efficient operations.
- Economic down-turn and increased unemployment.
- Need to get better patronage of facilities (Leisure Centre)

#### 2) In Favour

- Concern about neglect of infrastructure.
- Good services.
- Need to maintain gardens good appearance of Municipality.
- We get good value for money.

#### 3) Services for Savings

- Street sweeper?
- Reduce infrastructure – maintenance interval.
- Greater reliance on community to maintain residential common areas.

#### Question 3

- Increase charges on commercial services.
- Instead of reducing services look at revenue generation.  
Possibilities:
  - Tender for outside jobs.
  - Parking meters?
  - Hiring of equipment.
  - More business models
  - Sponsorships

#### Q1. Against

- Not the right time – world recession
- Review of staff levels and programmes preferred.
- Impact on fixed income ratepayers
- Consider a shorter time span (say 3 years) then review.

#### Q2. For

- We wish to maintain the same level of services.
- Will help maintain independence (against amalgamation).

- Faith in Council's judgement.
- Appreciation of process of consultation.

#### What Arguments Against

- No money (residents)
  - Family, Kids and Mortgage
  - Self funded retirees
- Negative effect on local businesses (rents)
- Reduces pressure for Council to be efficient .
- May deter new residents coming in.
- Not currently getting value for \$ (some areas)

#### What Arguments In Favour

- Improve asset management.
- Maintain current services.
- Shows Councils approach responsible.
- Small increase now vs bigger later.
- Better positioned Re: amalgamation

#### If not approved – What service changes

- Reduce reserve maintenance (mowing).
- Additional outsourcing
- Sell assets and lease back.
- Rationalise assets.
- Review Budget methods.

#### Response to Situation

- Improve profitability of loss making ventures (eg, Leisure Centre)
- Reduce expenditures in all departments.
- Outsource some functions
- Expand profitable commercial operations.
- Reduce level of services.

#### Pro

- Need to maintain local infrastructure.
- Keep Council viable.
- Avoid possible amalgamation.
- Need for future, additional assets and improvements.

#### Con

- Pensioner rebate not increasing.
- Is this a short term fix for a long term problem?
- Is timing right?
- Clear need for a review of structure of Federal/State/Local Government finances.
- Need to demonstrate continuing efficiencies.
- Need for staff review.

## Attachment 7

### Residents' and Ratepayers' Special Rate Variation Forum

Saturday 9 May 2009

#### Resident and Ratepayer Indication of Support

Support or Strongly Support	<ul style="list-style-type: none"> <li>• I think the Council provides a good level of services to the community and these resources have to be funded and maintained. Therefore, I can see the need for the SRV – and everyone in the community should contribute towards the amenities we enjoy in the Kiama Municipality. (anonymous)</li> <li>• To keep all the LGA services we enjoy the rise is needed. The forums have been run well with lots of interesting information, that most people wouldn't know but do now. (Sharon Parker)</li> <li>• After hearing all relevant information I believe that the rate rise is needed for future growth and prosperity of Kiama as a beautiful seaside town. (Anthony Langlois)</li> <li>• Support - I believe right course of action – Council's presentation good. (anonymous)</li> <li>• It is obvious a rate increase is inevitable. The size of the proposed increase troubles me, but I believe it has been forced on us (at least hastily) by Government ?(Bob Barnes)</li> <li>• Cut Services = Cut Jobs These are hard times and for a small increase no jobs/services will be cost. In favour of increase. (anonymous)</li> <li>• I trust that Council staff have done their homework, and therefore I trust that in order to maintain my excellent quality of life here in Kiama that rates must rise. A small price to pay for our own slice of heaven. (anonymous)</li> <li>• I'm ok with this – in the long run it is the best!!! (anonymous)</li> <li>• Must at least maintain current services. .... To ensure asset renewal. (anonymous)</li> <li>• I'm definitely in favour of the increase and I congratulate the Council on the openness and the information provided. (anonymous)</li> </ul>
	<ul style="list-style-type: none"> <li>• The timing is unfortunate, but I am convinced that if we are to maintain the services, facilities and appearances of our community, I believe the rate increase is unavoidable. (Clr Ban van der Wijngaart)</li> <li>• In order to maintain services &amp; maintenance programs I feel the rate rise is necessary. If households are doing it tough it stands to reason Council is experiencing the same. (anonymous)</li> </ul>

	<ul style="list-style-type: none"> <li>• The problem arises from inadequate funding processes by State and Federal Governments for Local Government. – I reluctantly support the rate rise proposal (Brian Petschler)</li> <li>• Support – Council has shown it is resourceful and cutting costs where it can. If the increase is not granted, infrastructure and services will decline and greater increases will be required in future years. (anonymous)</li> <li>• Necessary to maintain (or even improve) services. Unfortunate that it will impact negatively on some who are struggling financially. (Trevor Outhbertson)</li> </ul>
	<ul style="list-style-type: none"> <li>• To avoid amalgamation and maintaining the independence of the Municipality of Kiama. Also to keep pace with cost shifting an asset maintain the rate rise is necessary. (anonymous)</li> <li>• Have not been satisfied that Council has exhausted all possible ideas on efficiency but there is a need for an increase because of the compounded reduction in income caused by rate pegging not keeping up with inflation. (anonymous)</li> <li>• It will be a financial burden for many ratepayers, but I feel it is essential that Council get enough money to maintain and replace essential infrastructure and assets. (anonymous)</li> <li>• Full support – a substantial case has been presented. (Mayor, Sandra McCarthy)</li> <li>• Rare recommended should only go ahead after all avenues have been explored. (Gwenda Hammond)</li> <li>• If we have tried every thing possible I go for the rates increase. (anonymous)</li> </ul>
	<ul style="list-style-type: none"> <li>• Much to think about – have fair confidence in Council's proposal though one of the "restrictive income" sector. (anonymous)</li> </ul>
	<ul style="list-style-type: none"> <li>• I feel it is justified but Council needs to review it's internal processes to ensure there is optimum efficiency. (anonymous)</li> <li>• I question the length of time, why not 3 years and what happens afterwards? (anonymous)</li> <li>• I believe the Council should have given better financial figures – State increase or decrease in \$ over the last 4 years. (anonymous)</li> <li>• Would not be happy to see any reduction in Council services. I think Council still needs to review its costs and activities further before looking to revenue increases but I do not object in principle to a justified request for a rate increase. (anonymous)</li> </ul>
Do not strongly support or	<ul style="list-style-type: none"> <li>• Needed (but not extremely happy) (anonymous)</li> <li>• Due to economic reasons percentage could be slightly less. (anonymous)</li> <li>• Times are tough But!!! (anonymous)(green)</li> </ul>

Oppose	<ul style="list-style-type: none"> <li>• A well run Council:- Rates are reasonable Could be better facilities "Black Beach Reserve" "Pool" 50/50 (anonymous)</li> <li>• 50% agree, 50% disagree – unemployment and financial stress maybe an issue. (anonymous)</li> <li>• Consider SRV is probably necessary but consider timing <u>not good</u>. Have special concern for low income earners, unemployed and pensioners. (anonymous)</li> <li>• Lets use the skills of the people in the electorate to assist Council in focussing on the core requirements. People are far more likely to give of their time than money in rates. (anonymous)</li> </ul>
Oppose or Strongly Oppose	<ul style="list-style-type: none"> <li>• Present economic circumstances create constraints for many of the ratepayers of the Municipality. Investigate budget savings in line with what Lindsay Sharp suggested. (anonymous)</li> <li>• Tough economic times wish the increase was not so high. Worried it might cause shop closures. (anonymous)</li> <li>• <u>The Sceptic</u> – More data and fact – based succinct material and argument – please convince me! (anonymous)</li> <li>• Tough on families with kids and a mortgage. (anonymous)</li> <li>• I am against supporting Council 6.5% SRV at this time of world economic climate and NSW Budget to be handed down. If economic climate changes end of year or next year – re look at process then. Sorry – live within means. (anonymous)</li> <li>• This is a bad time to consider rate increases (i.e in a recession). Council is in the position where it can consider cost cutting. (anonymous)</li> <li>• It's nice to be invited. The forum's a good idea. No – I don't think the rate rise should go ahead. (anonymous)</li> <li>• Insufficient Planning, insufficient review, will force examination of Council operations. (anonymous)</li> </ul>

