



New South Wales

Water Industry Competition Act 2006 (NSW)

Section 10

**Notice of Decision -
Application for a Variation of Network Operator's
Licence No. 15_033**

I, The Hon. Kevin Anderson, MP, Minister for Lands and Water, have decided to grant Altogether Cooranbong Pty Ltd (**Applicant**)'s (ACN 169 450 453) application (**Application**) to vary network operator's licence number 15_033 (**Licence**) under section 10(1) of the *Water Industry Competition Act 2006* (NSW) (**Act**). The reasons for my decision are set out below.

I have considered and accepted the Independent Pricing and Regulatory Tribunal (**IPART**)'s advice and recommendations in its report to me on the Application. I attach IPART's report (**Attachment A**).

Based on my consideration and acceptance of IPART's report:

- (a) I am satisfied that the Applicant is not a disqualified corporation for the purposes of section 10(3)(a) of the Act;
- (b) I am satisfied that the Applicant is not a corporation that is a related entity (within the meaning of the *Corporations Act 2001* (Cth)) of a disqualified corporation that would have a direct or indirect interest in, or influence on, the carrying out of the activities that the Licence, if varied in accordance with the Application, would authorise, for the purposes of section 10(3)(b) of the Act; and
- (c) I am satisfied as to each of the criteria set out in section 10(4) of the Act.

I have also had regard to the licensing principles set out in section 7 of the Act in considering whether or not to grant the Licence variation and what conditions should be imposed on the Licence.

I attach the Licence, as varied (**Attachment B**).

The Hon. Kevin Anderson, MP
Minister for Lands and Water

Dated this

14

day of December 2022



NEW SOUTH WALES GOVERNMENT

Water Industry Competition Act 2006 (NSW)

Network operator's licence

Licence no. 15_033

Altogether Cooranbong Pty Ltd

(ACN 169 450 453)

PRELIMINARY

1. Summary

- 1.1. This Licence is granted under section 10(1) of the Act.
- 1.2. The Act prohibits a person from constructing, maintaining or operating any water industry infrastructure otherwise than under the authority of a licence. This Licence authorises the Licensee and other Authorised Persons to carry out such activities that would otherwise be prohibited under the Act.

2. Outline

- 2.1. This Licence is divided into the following sections and schedules:

Section 1 authorises the construction, maintenance and operation of water infrastructure for non-potable water (if applicable).

Section 2 authorises the construction, maintenance and operation of water infrastructure for drinking water (if applicable).

Section 3 authorises the construction, maintenance and operation of sewerage infrastructure (if applicable).

Schedule A sets out special Ministerially-imposed licence conditions that are specific to this Licence.

Schedule B sets out Ministerially-imposed licence conditions that generally apply to network operators' licences granted under the Act.

Schedule C sets out definitions and interpretation provisions.

Schedule D sets out the area of operations for non-potable water and sewage treatment infrastructure.

Schedule E sets out the area of operations for non-potable water reticulation infrastructure.

Schedule F sets out the area of operations for drinking water reticulation infrastructure and sewerage services infrastructure.

Schedule G provides indicative maps for reference only.

- 2.2. In addition to the conditions in Schedules A and B to this Licence, the Act and Regulation also contain conditions that apply to this Licence. Nothing in Schedules A or B modify or affect the conditions imposed on this Licence by the Act or Regulation.
- 2.3. Where there is an inconsistency between Schedule G on the one hand and any of Schedules D, E and F on the other hand, Schedules D, E and F are to prevail over Schedule G to the extent of the inconsistency.

SECTION 1 – ACTIVITIES AUTHORISED: NON-POTABLE WATER

Subject to the conditions imposed by the Act, the Regulation and Schedules A and B of this Licence, this Licence authorises the Licensee and any Authorised Persons specified in Table 1.1 to construct, maintain and operate the water industry infrastructure specified in Table 1.2:

- a) for one or more of the purposes for water industry infrastructure specified in Table 1.2; and
- b) within the area of operations specified in Table 1.3.

The non-potable water supplied by means of the water industry infrastructure specified in Table 1.2 may only be used for the authorised purposes for non-potable water specified in Table 1.4.

Table 1.1 Authorised Persons

Altogether Group Pty Ltd (ACN 136 272 298)

Table 1.2 Water industry infrastructure and purposes for water industry infrastructure

- | |
|---------------------------------------------------------------------------------------------------------------------------------------------------------------------------------------------------------------------------------------------------------------------------------------------------------------------------------------------------------------------------------------------------------------------------------------------------------------------------------------------------------------------------------------------------------------------------------------------------------------------------------------------------------------------------------------------------------------------------------------------------------------------------------------------------------------------------------------------------------------------------------------------------------------------------------------------------------------------------------------------------------------------------------------------------------------------------------------------------------------------------------------------------------------------------------------------------------------------------------------------------------------------------------------------------------|
| <ul style="list-style-type: none">1) A treatment plant for non-potable water and other water infrastructure used, or to be used, in connection with the treatment plant, where components of the treatment plant or other water infrastructure may be used for one or more of the following purposes for water industry infrastructure:<ul style="list-style-type: none">a) production of non-potable water;b) treatment of non-potable water;c) filtration of non-potable water;d) storage of non-potable water; ande) conveyance of non-potable water in the area specified in Table 1.3 (1).2) A reticulation network for non-potable water and other water infrastructure used, or to be used, in connection with the reticulation network, where components of the reticulation network or other water infrastructure may be used for one or more of the following purposes for water industry infrastructure:<ul style="list-style-type: none">a) production of non-potable water;b) treatment of non-potable water;c) filtration of non-potable water;d) storage of non-potable water; ande) conveyance of non-potable water in the areas specified in Table 1.3 (2). |
|---------------------------------------------------------------------------------------------------------------------------------------------------------------------------------------------------------------------------------------------------------------------------------------------------------------------------------------------------------------------------------------------------------------------------------------------------------------------------------------------------------------------------------------------------------------------------------------------------------------------------------------------------------------------------------------------------------------------------------------------------------------------------------------------------------------------------------------------------------------------------------------------------------------------------------------------------------------------------------------------------------------------------------------------------------------------------------------------------------------------------------------------------------------------------------------------------------------------------------------------------------------------------------------------------------|

Table 1.3 Area of operations

- | |
|-------------------------------------------------------------------------------------------------------------------------------------------------------------------------------------------------------------------------------------------------------------------------------------------------------------------------------------|
| <ol style="list-style-type: none">1) The land bounded within the sequentially numbered vertices listed in Schedule D, Table D.1 and illustrated in Map 1 in Schedule G.2) The land bounded within the sequentially numbered vertices listed in Schedule E, Table E.1 and illustrated in Map 2 in Schedule G. |
|-------------------------------------------------------------------------------------------------------------------------------------------------------------------------------------------------------------------------------------------------------------------------------------------------------------------------------------|

Table 1.4 Authorised purposes for non-potable water

- | |
|---------------------------------------------------------------------------------------------------------------------------------------------------------------------------------------------------------------------------------------------------------------------------------------------------------------------------------------------------------------------------------------------------------------------------------------------------------------------------------------------------------------|
| <ol style="list-style-type: none">1) Car washing2) Dust suppression for construction activities3) General wash down (for residential and industrial use on hard surfaces)4) Irrigation5) Ornamental water features6) Process water at recycled water treatment plant (process water would not be provided to or retailed to any end user customers)7) Street cleaning8) Toilet flushing9) Washing machines (cold water) |
|---------------------------------------------------------------------------------------------------------------------------------------------------------------------------------------------------------------------------------------------------------------------------------------------------------------------------------------------------------------------------------------------------------------------------------------------------------------------------------------------------------------|

SECTION 2 – ACTIVITIES AUTHORISED: DRINKING WATER

Subject to the conditions imposed by the Act, the Regulation and Schedules A and B of this Licence, this Licence authorises the Licensee and any Authorised Persons specified in Table 2.1 to construct, maintain and operate the water industry infrastructure specified in Table 2.2:

- a) for one or more of the purposes for water industry infrastructure specified in Table 2.2; and
- b) within the area of operations specified in Table 2.3.

Table 2.1 Authorised Persons

Altogether Group Pty Ltd (ACN 136 272 298)

Table 2.2 Water industry infrastructure and purposes for water industry infrastructure

A reticulation network for drinking water and other water infrastructure used, or to be used, in connection with the reticulation network, where components of the reticulation network or other water infrastructure may also be used for one or more of the following:

- | |
|--------------------------------------------------------------------------------------------------------------------------------------------------------------------|
| <ul style="list-style-type: none">a) storage of drinking water;b) conveyance of drinking water; andc) treatment of drinking water. |
|--------------------------------------------------------------------------------------------------------------------------------------------------------------------|

Table 2.3 Area of operations

- | |
|----------------------------------------------------------------------------------------------------------------------------------------------------------------------------------------|
| <ul style="list-style-type: none">1) The land situated within the sequentially numbered vertices listed in Schedule F, Table F.1 and illustrated in Map 3 in Schedule G. |
|----------------------------------------------------------------------------------------------------------------------------------------------------------------------------------------|

SECTION 3 – ACTIVITIES AUTHORISED: SEWERAGE SERVICES

Subject to the conditions imposed by the Act, the Regulation and Schedules A and B of this Licence, this Licence authorises the Licensee and any Authorised Persons specified in Table 3.1 to construct, maintain and operate the water industry infrastructure specified in Table 3.2:

- a) for one or more of the purposes for water industry infrastructure specified in Table 3.2; and
- b) within the area of operations specified in Table 3.3.

Table 3.1 Authorised Persons

Altogether Group Pty Ltd (ACN 136 272 298)

Table 3.2 Water industry infrastructure and purposes for water industry infrastructure

- | |
|-----------------------------------------------------------------------------------------------------------------------------------------------------------------------------------------------------------------------------------------------------------------------------------------------------------------------------------------------------------------------------------------------------------------------------------------------------------------------------------------------------------------------------------------------------------------------------------------------------------------------------------------------------------------------------------------------------------------------------------------------------------------------------------------------------------------------------------------------------------------------------------------------------------------------------------------------------------------------------------------------------------------------------------------------------------------------------------------------------------------------------------------------------------------------------------------------------------------------------------------|
| <ul style="list-style-type: none">1) A treatment plant for sewage and other sewerage infrastructure used, or to be used, in connection with the treatment plant, where components of the treatment plant or other sewerage infrastructure may be used for one or more of the following purposes for water industry infrastructure:<ul style="list-style-type: none">a) production of treated non-potable water from sewage;b) treatment of sewage;c) filtration of sewage;d) storage of sewage; ande) conveyance of sewagein the area specified in Table 3.3 (1)2) A reticulation network for sewage and other sewerage infrastructure used, or to be used, in connection with the reticulation network, where components of the reticulation network or other sewerage infrastructure may be used for one or more of the following purposes for water industry infrastructure:<ul style="list-style-type: none">a) production of treated non-potable water from sewage,b) treatment of sewage;c) filtration of sewaged) storage of sewage; ande) conveyance of sewagein the area specified in Table 3.3 (2) |
|-----------------------------------------------------------------------------------------------------------------------------------------------------------------------------------------------------------------------------------------------------------------------------------------------------------------------------------------------------------------------------------------------------------------------------------------------------------------------------------------------------------------------------------------------------------------------------------------------------------------------------------------------------------------------------------------------------------------------------------------------------------------------------------------------------------------------------------------------------------------------------------------------------------------------------------------------------------------------------------------------------------------------------------------------------------------------------------------------------------------------------------------------------------------------------------------------------------------------------------------|

Table 3.3 Area of operations

- | | |
|----|-------------------------------------------------------------------------------------------------------------------------------------|
| 1) | The land situated within the sequentially numbered vertices listed in Schedule D, Table D.1 and illustrated in Map 1 in Schedule G. |
| 2) | The land situated within the sequentially numbered vertices listed in Schedule D, Table F.2 and illustrated in Map 3 in Schedule G. |

SCHEDULE A – SPECIAL MINISTERIALLY-IMPOSED LICENCE CONDITIONS

1. Notification of changes to Agreements

- 1.1. If a party to an Agreement proposes to:
- a) terminate the Agreement;
 - b) novate the Agreement;
 - c) assign or transfer any of its rights or obligations under the Agreement to any other person; or
 - d) alter the Agreement in any way that materially reduces the Licensee's technical, financial or organisational capacity to carry out the activities authorised by this Licence,

the Licensee must provide IPART with written notice of that fact as soon as practicable, but no later than 3 months, before the time when the proposed action is to occur. The written notice must include details of how the services provided under the Agreement will be provided subsequent to the proposed termination, novation, assignment, transfer or alteration.

2. Review of Environmental Factors

- 2.1. Where the Licensee carries out any activities authorised by this Licence, the Licensee must:
- a) implement environmental risk mitigation measures substantially consistent with the environmental risk mitigation measures identified in the REF; and
 - b) specify, in any Plan or combination of Plans, how the Licensee will implement environmental risk mitigation measures substantially consistent with the environmental risk mitigation measures identified in the REF.

3. Construction Environmental Management Plan

- 3.1. The Licensee must not commence, or authorise the commencement of, the construction of any Water Industry Infrastructure the subject of the REF until after the Licensee has provided a Construction Environmental Management Plan to IPART, and IPART has provided written approval of the Construction Environmental Management Plan to the Licensee.
- 3.2. The Licensee must ensure that the construction of any Water Industry Infrastructure the subject of the REF is carried out in accordance with the approved Construction Environmental Management Plan.

4. Management of Designated Irrigation Zones

- 4.1. The Licensee must manage irrigation of Designated Irrigation Zones in accordance with the recommendations in the LCA
- 4.2. The Licensee must monitor soil condition of Designated Irrigation Zones on an annual basis and maintain records of monitoring. Any deterioration to soil conditions from the LCA must be reported to IPART with proposed mitigation measures that the Licensee will undertake. The licensee must undertake, and maintain records of, all proposed mitigation measures unless notified otherwise by IPART

5. Water Quality Plan

- 5.1. The licensee must ensure that its Water Quality Plan is a single, cohesive and structured scheme specific document which specifies the actions the licensee must take to implement the 12 elements of the framework for recycled water and drinking water quality management and use set out in the Australian Guidelines for Water Recycling and the Australian Drinking Water Guidelines.

6. Operational Procedures

- 6.1. The Licensee must develop and document, consistent with element 4 of the Australian Guidelines for Water Recycling and Australian Drinking Water Guidelines:
 - a) monitoring protocols for operational performance of the recycled water and drinking water supply systems, including the selection of operational parameters and criteria, and the routine analysis of results;
 - b) procedures for corrective action where operational parameters are not met;
 - c) procedures for rapid communication systems to deal with unexpected events; and
 - d) programs for regular inspection and maintenance of all equipment, including monitoring equipment.
- 6.2. The Licensee must:
 - a) fully implement the Operational Procedures;
 - b) ensure that all of its activities are carried out in accordance with the Operational Procedures; and
 - c) keep records to demonstrate the extent to which the Operational Procedures have been implemented and complied with.

SCHEDULE B – GENERAL MINISTERIALLY-IMPOSED LICENCE CONDITIONS

1. Ongoing capacity to operate

- 1.1. The Licensee must have the technical, financial and organisational capacity to carry out the activities authorised by this Licence. If the Licensee ceases to have this capacity, it must report this to IPART in accordance with the Reporting Manual.

2. Maintaining appropriate insurance

- 2.1. The Licensee must hold insurance that is appropriate for the size and nature of the activities that the Licensee is carrying out under this Licence.
- 2.2. The Licensee must provide a copy of each certificate of currency of the insurance maintained by the Licensee to IPART in accordance with the Reporting Manual.
- 2.3. Before commencing to commercially operate the Specified Water Industry Infrastructure under this Licence, the Licensee must demonstrate that the insurance held is appropriate for the size and nature of those commercial operation activities, by providing a report to IPART from an Insurance Expert that:
- a) certifies that in the Insurance Expert's opinion, the type, scope and limit of the insurance held by the Licensee is appropriate for the size and nature of those commercial operation activities; and
 - b) is in the form prescribed by the Reporting Manual.
- 2.4. [Not applicable]
- 2.5. If, in relation to the activities authorised by this Licence, there is, or is to be, a change in either of the following, the Licensee must provide a report to IPART in accordance with the Reporting Manual:
- a) the insurer or underwriting panel in respect of an insurance policy held by the Licensee; or
 - b) the type, scope or limit on the amount of insurance held by the Licensee.
- 2.6. From time to time when requested in writing by IPART, the Licensee must provide a report to IPART, in the manner and form and within the timeframes specified by IPART, from an Insurance Expert certifying that in the Insurance Expert's opinion the type, scope and limit on the amount of insurance held by the Licensee is appropriate for the size and nature of the activities that the Licensee is carrying out under this Licence.

[Note: The circumstances in which IPART may request a report under clause 2.6 include (but are not limited to) the following:

- *where IPART considers that there may be a change in the type, scope or limit on the amount of insurance held by the Licensee in relation to activities that the Licensee is carrying out under this Licence;*
- *where there is a change in the type or extent of activities authorised by this Licence;
or*
- *where IPART or an approved auditor considers that the type, scope or limit on the amount of insurance held by the Licensee may not be appropriate for the size and nature of the activities that the Licensee is carrying out under this Licence.]*

- 2.7. The Licensee must maintain professional indemnity insurance during the Design Phase and for a minimum period of 6 years from the date of the completion of the Design Phase.

3. Complying with NSW Health requirements

- 3.1. The Licensee must carry out the activities authorised by this Licence in compliance with any requirements of NSW Health that:
- a) IPART has agreed to; and
 - b) are notified from time to time to the Licensee by IPART in writing.

4. Complying with Audit Guidelines

- 4.1. The Licensee must comply with any Audit Guidelines issued by IPART.

5. Reporting in accordance with the Reporting Manual

- 5.1. The Licensee must prepare and submit reports in accordance with the Reporting Manual.

6. Reporting information in relation to the register of licences

- 6.1. The Licensee must notify IPART, and provide IPART with details, of any change in relation to the following, in accordance with the Reporting Manual, within 14 days of the change:
- a) any source from which the water handled by the Specified Water Industry Infrastructure is derived;

- b) the identity of each licensed retail supplier or public water utility that has access to the infrastructure services provided by the Specified Water Industry Infrastructure for the purpose of supplying water to its customers;
- c) any other water infrastructure to which the Specified Water Industry Infrastructure is connected;
- d) in the case of non-potable water, the authorised purposes for that water;
- e) the identity of each licensed retail supplier or public water utility that has access to infrastructure services provided by the Specified Water Industry Infrastructure for the purpose of providing sewerage services to its customers;
- f) any other sewerage infrastructure to which the Specified Water Industry Infrastructure is connected; and
- g) the arrangements for the disposal of waste from the water industry infrastructure specified in section 3, Table 3.2.

7. Monitoring

- 7.1. The Licensee must undertake any monitoring that is required for the purposes of this Licence, any Plan, the Act or the Regulation in accordance with this clause 7.
- 7.2. The Licensee must keep the following records of any samples taken for monitoring purposes specified in the Water Quality Plan:
 - a) the date on which the sample was taken;
 - b) the time at which the sample was collected;
 - c) the point or location at which the sample was taken; and
 - d) the chain of custody of the sample (if applicable).
- 7.3. The Licensee must ensure that analyses of all samples taken for the purposes of Verification Monitoring are carried out by a laboratory accredited for the specified tests by an independent body that is acceptable to NSW Health, such as the National Association of Testing Authorities or an equivalent body.

8. Delineating responsibilities

- 8.1. If a code of conduct has not been established under section 46 of the Regulation, the Licensee must, by a date specified by IPART, establish a code of conduct (**Licensee's Code of Conduct**) in accordance with this clause 8.
- 8.2. Before the Licensee brings the Specified Water Industry Infrastructure into commercial operation or by a later date specified by IPART (if any), the Licensee's Code of Conduct must be agreed in writing between:
 - a) the Licensee; and

- b) each licensed network operator, licensed retail supplier and/or public water utility that:
 - i) supplies water or provides sewerage services by means of any water industry infrastructure that is connected to the Specified Water Industry Infrastructure; or
 - ii) constructs, maintains or operates any water industry infrastructure that is connected to the Specified Water Industry Infrastructure.

8.3. [Not applicable]

8.4. The Licensee's Code of Conduct must set out the respective responsibilities of the entities specified in clause 8.2 by, at a minimum, providing for:

- a) who is responsible for repairing, replacing or maintaining any pipes, pumps, valves, storages or other infrastructure connecting the Specified Water Industry Infrastructure to the other water industry infrastructure;
- b) who is responsible for water quality;
- c) who is liable in the event of the unavailability of water;
- d) who is liable in the event of failure of any water industry infrastructure;
- e) the fees and charges payable in respect of the use of the water industry infrastructure; and
- f) who is responsible for handling customer complaints.

8.5. The Licensee must not contravene the Licensee's Code of Conduct to the extent that it makes the Licensee responsible or liable for the matters set out in it.

9. Notification of changes to end-use

9.1. If the Licensee proposes to operate the Specified Water Industry Infrastructure to supply non-potable water for an end-use which is not set out in the most recent Water Quality Plan provided to IPART, the Licensee must notify IPART in writing at least 3 months before commencing such operation.

10. Notification of commercial operation

10.1. Each time the Licensee has brought any new Specified Water Industry Infrastructure into commercial operation, the Licensee must:

- a) notify IPART in accordance with the Reporting Manual that it has brought the relevant Specified Water Industry Infrastructure into commercial operation; and
- b) provide such notification within 10 days after it has brought the relevant Specified Water Industry Infrastructure into commercial operation.

11. Notification of non-compliant Plumbing

11.1. If the Licensee becomes aware that a customer's Plumbing is not Code Compliant, the Licensee must, within 10 days:

- a) notify the customer of that fact, in writing, and
- b) where the Plumbing that is not Code Compliant threatens, or could threaten, water quality, public health or safety, also notify the Plumbing Regulator of that fact, in writing.

[Note: Without limiting paragraph (b), an example of Plumbing which must be notified to the Plumbing Regulator under that clause is Plumbing that contains a point where it is possible for non-potable water to come into contact with a drinking water supply.]

SCHEDULE C – INTERPRETATION AND DEFINITIONS

1. Interpretation

1.1. In this Licence, unless the context requires otherwise:

- a) the singular includes the plural and vice versa;
- b) headings are used for convenience only and do not affect the interpretation of this Licence;
- c) a reference to a document includes the document as modified from time to time and any document replacing it;
- d) a reference to a “person” includes a natural person and any body or entity whether incorporated or not;
- e) a reference to a clause is to a clause in this Licence;
- f) a reference to a section is to a section in this Licence;
- g) a reference to a schedule is to a schedule to this Licence;
- h) a reference to a law or statute includes regulations, rules, codes and other instruments under it, and consolidations, amendments, re-enactments or replacements of them; and
- i) explanatory notes do not form part of this Licence, but in the case of uncertainty may be relied on for interpretation purposes.

2. Definitions

2.1. Expressions used in this Licence that are defined in the Act or the Regulation have the meanings set out in the Act or the Regulation.

2.2. In this Licence:

Act means the *Water Industry Competition Act 2006* (NSW).

Agreement means any agreement or deed provided to IPART in connection with the Licensee's application for this Licence, or any application to vary this Licence.

Audit Guidelines means the document titled “*Audit Guideline under the Water Industry Competition Act 2006 (NSW)*”, which is prepared by IPART and is available on IPART's [website](#), and any other guidelines issued by IPART in relation to audits under the Act.

Authorised Person	means each person specified in, as applicable: <ul style="list-style-type: none"> a) section 1, Table 1.1; b) section 2, Table 2.1; and c) section 3, Table 3.1.
Authorised Purposes	means the authorised purposes specified in, as applicable: <ul style="list-style-type: none"> a) section 1, Table 1.4; b)
Code Compliant	has the meaning given to that term under section 7 of the <i>Plumbing and Drainage Act 2011</i> (NSW).
Construction Environmental Management Plan	means a site or project specific plan which: <ul style="list-style-type: none"> a) complies with the basic structure detailed in the Environmental Management Plan Guidelines; and b) identifies how the Licensee will implement the environmental risk mitigation measures identified in the REF to the extent they relate to construction.
Designated Irrigation Zones	means designated irrigation zones identified in the LCA.
Design Phase	means the period during which any design works are carried out in relation to the water industry infrastructure that the Licensee is authorised to construct, maintain and operate under this Licence.
Environmental Management Plan Guidelines	means the document titled “ <i>Guideline for the Preparation of Environmental Management Plans</i> ”, prepared by the Department of Infrastructure, Planning and Natural Resources.

Insurance Expert	means an insurance broker which holds an Australian financial services licence under Part 7.6 of the <i>Corporations Act 2001</i> (Cth) that authorises the broker to provide financial product advice for, and deal in, contracts of insurance within the meaning of Chapter 7 of that Act.
IPART	means the Independent Pricing and Regulatory Tribunal of New South Wales established under the <i>Independent Pricing and Regulatory Tribunal Act 1992</i> (NSW).
LCA	means the “ <i>Land Capability Assessment and Recycled Water Irrigation Plan North Cooranbong, NSW (Extension to Cooranbong Water NOL#15_033)</i> ”, 24 September 2018.
Licence	means this network operator’s licence granted under section 10 of the Act.
Licensee	means Altogether Cooranbong (ACN 169 450 453).
Licensee’s Code of Conduct	has the meaning given in Schedule B, clause 8.1.
Minister	means the Minister responsible for Part 2 of the Act.
NSW Health	means the Water Unit of NSW Ministry of Health and any of the local health districts as defined by the NSW Ministry of Health.
Operational Procedures	Means the protocols, procedures and programs referred to in Schedule A, clause 6.1 (a)-(d).
Ornamental Water Feature	means water features that: <ul style="list-style-type: none"> a) are provided primarily for aesthetic or beautification purposes, and b) do not, by their design or accessibility, encourage interaction with the water.

Plan	means any infrastructure operating plan, water quality plan or sewage management plan that the Licensee is required to prepare under the Regulation.
Plumbing	means any pipe, fitting or apparatus that is situated: <ul style="list-style-type: none"> a) downstream of the customer's connection point to a water main, where the water main is Specified Water Industry Infrastructure; b) upstream of a customer's connection point to a sewer main, where the sewer main is Specified Water Industry Infrastructure; or c) upstream of a customer's connection point to a stormwater drain, where the stormwater drain is Specified Water Industry Infrastructure.
Plumbing Regulator	has the meaning given to that term under section 3 of the <i>Plumbing and Drainage Act 2011</i> (NSW).
REF	means the document titled "Extension of WICA Network Operator Licence 15_033 Cooranbong – Review of Environmental Factors", Version E, prepared by RPS Australia East Pty Ltd and dated 25 September 2019 and does not include any modified version of that document or any document replacing it.
Regulation	means the <i>Water Industry Competition (General) Regulation 2021</i> (NSW).
Reporting Manual	means the document titled "Network Operator's Reporting Manual and Retail Supplier's Reporting Manual under <i>Water Industry Competition Act 2006</i> ", which is prepared by IPART and is available on IPART's website .
Specified Water Industry Infrastructure	means the water industry infrastructure specified in, as applicable: <ul style="list-style-type: none"> a) section 1, Table 1.2; b) section 2, Table 2.2; and c) section 3, Table 3.2.

Verification Monitoring means verification monitoring as described in the document titled “*Australian Drinking Water Guidelines*” or the document titled “*Australian Guidelines for Water Recycling*” as the case may be.

Water Quality Plan means the water quality plan that the Licensee is required to prepare under the Regulation.

**SCHEDULE D – AREA OF OPERATIONS – NON-POTABLE WATER AND SEWAGE
TREATMENT INFRASTRUCTURE**

Table D.1 Vertices for area of operation

Vertex	Coordinates ¹	
	Eastings	Northings
1	355974.226	6340014.313
2	356089.188	6340029.934
3	356098.205	6340031.159
4	356139.302	6340022.406
5	356132.106	6339947.433
6	356089.208	6339500.483
7	356087.789	6339499.203
8	356047.991	6339543.034
9	356029.467	6339554.282
10	356000.436	6339586.616
11	356001.255	6339815.371
12	355985.02	6339934.868
13	355974.226	6340014.313

1 Coordinate reference system is MGA 56

SCHEDULE E – AREA OF OPERATIONS – NON-POTABLE WATER RETICULATION INFRASTRUCTURE

Table E.1 Vertices for area of operation

Coordinates ¹			Coordinates ¹		
Vertex	Easting	Northing	Vertex	Easting	Northing
1	354351.2032	6342167.55	40	356886.7544	6341561.315
2	355299.0591	6342004.698	41	356905.4434	6341559.175
3	355481.7702	6341970.798	42	356918.4644	6341554.533
4	355968.7745	6341889.258	43	356933.4451	6341543.878
5	355910.9731	6341549.353	44	356947.2888	6341529.441
6	356030.2172	6341528.629	45	356950.2595	6341524.532
7	356042.3055	6341524.597	46	356950.7404	6341518.83
8	356053.7802	6341517.656	47	356941.1524	6341492.611
9	356059.2623	6341523.277	48	356973.8372	6341489.636
10	356063.8984	6341524.421	49	356970.0052	6341447.536
11	356150.4259	6341511.494	50	356958.5035	6341430.794
12	356154.1373	6341509.362	51	356910.2449	6341435.186
13	356156.0162	6341505.516	52	356904.0881	6341367.363
14	356151.8121	6341474.016	53	356904.6084	6341357.693
15	356147.3803	6341455.807	54	356907.3558	6341348.406
16	356139.1553	6341435.551	55	356937.9678	6341282.014
17	356127.8378	6341416.846	56	356943.9535	6341272.817
18	356116.3119	6341403.44	57	356952.5981	6341265.16
19	356102.1618	6341393.101	58	356962.4513	6341260.33
20	356085.9769	6341386.396	59	357001.7439	6341253.435
21	356068.6568	6341383.682	60	356933.2081	6340826.617
22	356062.9231	6341320.682	61	356697.2687	6340864.52
23	356066.543	6341316.338	62	356716.8212	6340986.479
24	356148.1929	6341308.907	63	356698.0811	6340989.49
25	356152.5373	6341312.527	64	356547.334	6340997.065
26	356155.7868	6341347.522	65	356539.496	6340910.933
27	356159.2834	6341364.424	66	356474.5869	6340914.194
28	356201.2679	6341482.23	67	356467.2675	6340854.495
29	356208.6185	6341494.359	68	356519.329	6340851.879
30	356218.6717	6341504.363	69	356523.8871	6340730.167
31	356230.2204	6341511.374	70	356522.9701	6340704.462
32	356243.7344	6341515.677	71	356513.2786	6340649.717
33	356318.5392	6341529.795	72	356630.136	6340632.035
34	356336.2238	6341531.366	73	356665.942	6340593.686
35	356531.1768	6341529.48	74	356656.7139	6340540.412
36	356634.1903	6341520.105	75	356518.0086	6340564.596
37	356640.2503	6341533.687	76	356508.2655	6340509.56
38	356652.0593	6341542.729	77	356459.4615	6340518.274
39	356843.4348	6341559.485	78	356457.6412	6340507.902

Coordinates ¹		
Vertex	Easting	Northing
79	356313.9231	6340533.018
80	356315.1177	6340539.803
81	356254.867	6340550.467
82	356241.3216	6340473.298
83	356252.6927	6340471.218
84	356238.7413	6340391.891
85	356227.397	6340393.974
86	356218.2323	6340341.748
87	356253.743	6340335.23
88	356248.901	6340307.638
89	356308.0843	6340296.774
90	356298.1922	6340238.878
91	356377.7982	6340225.529
92	356373.4623	6340204.142
93	356272.2473	6340220.896
94	356235.053	6340162.098
95	356321.1309	6340027.544
96	356340.7716	6340033.218
97	356370.8874	6340204.311
98	356373.511	6340204.045
99	356332.716	6339966.2
100	356323.6833	6339976.503
101	356251.4245	6339906.549
102	356139.3023	6340022.406
103	356089.2085	6339500.483
104	356087.7894	6339499.203
105	356102.1794	6339485.034
106	356191.0571	6339385.867
107	355937.5185	6339157.174
108	355789.4848	6339135.747
109	355823.9933	6338896.791
110	356022.9611	6338925.561
111	355991.42	6339144.608
112	356208.6784	6339176.099
113	356179.9009	6339009.081
114	356237.3283	6338610.893
115	356323.1962	6338606.372
116	356541.8616	6338568.677
117	356461.4455	6338420.286
118	356360.0849	6338292.326
119	356379.9633	6338285.023
120	356478.3201	6338409.186
121	356491.9674	6338434.366
122	356583.6216	6338418.63

Coordinates ¹		
Vertex	Easting	Northing
123	356568.2394	6338323.669
124	356564.4036	6338288.776
125	356632.7128	6338280.794
126	356650.7996	6338281.006
127	356667.0847	6338284.079
128	356677.6149	6338288.387
129	356690.8244	6338297.576
130	356701.292	6338309.422
131	356707.4465	6338319.488
132	356715.981	6338343.113
133	356724.1198	6338391.561
134	356728.0775	6338401.796
135	356736.6454	6338414.624
136	356752.5004	6338428.577
137	356772.5931	6338440.379
138	356788.5064	6338444.86
139	356800.9784	6338443.328
140	356818.0206	6338433.446
141	356842.5379	6338406.662
142	356950.5935	6338257.692
143	357019.8976	6338176.299
144	357061.0626	6338114.588
145	357081.5601	6338092.951
146	357120.2931	6338058.492
147	357135.4552	6338041.178
148	357145.5965	6338024.293
149	357153.1838	6338004.932
150	357157.8149	6337983.363
151	357159.1841	6337960.979
152	357155.0688	6337887.123
153	357154.5592	6337807.668
154	357152.5153	6337774.825
155	357146.4843	6337740.862
156	357137.9999	6337723.525
157	357129.9002	6337718.766
158	357122.622	6337719.477
159	357089.1699	6337734.891
160	357065.1978	6337739.497
161	356997.6263	6337736.055
162	356953.025	6337730.088
163	356934.6612	6337725.073
164	356906.707	6337713.101
165	356822.1603	6337665.443
166	356803.2384	6337650.252

Coordinates ¹		
Vertex	Easting	Northing
167	356767.0571	6337596.674
168	356749.5075	6337576.753
169	356739.8423	6337568.055
170	356719.0227	6337554.535
171	356707.9815	6337550.26
172	356696.5979	6337548.003
173	356684.9263	6337548.037
174	356664.1993	6337553.916
175	356654.3638	6337559.203
176	356641.1618	6337569.346
177	356628.4416	6337584.529
178	356598.9039	6337631.531
179	356580.1991	6337650.904
180	356564.2373	6337661.828
181	356512.3972	6337689.775
182	356478.0986	6337715.951
183	356459.6423	6337733.72
184	356438.2115	6337742.905
185	356412.6986	6337755.151
186	356392.2883	6337761.274
187	356364.7344	6337764.336
188	356338.201	6337763.315
189	356306.565	6337756.172
190	356277.2223	6337750.143
191	356257.1892	6337752.252
192	356237.17	6337757.192
193	356210.6366	6337754.131
194	356163.6929	6337737.802
195	356132.0569	6337714.33
196	356096.3389	6337707.187
197	356064.7029	6337704.125
198	356028.9849	6337693.92
199	355984.0822	6337674.53
200	355937.1385	6337656.161
201	355900.4	6337649.018
202	355877.9487	6337644.935
203	355862.8777	6337638.371
204	355835.89	6337626.487
205	355817.9448	6337621.564
206	355798.1395	6337618.504
207	355777.5665	6337617.681
208	355747.6481	6337621.442
209	355731.5028	6337626.918
210	355717.6593	6337634.403

Coordinates ¹		
Vertex	Easting	Northing
211	355706.8164	6337643.33
212	355699.6769	6337653.128
213	355696.9448	6337663.226
214	355699.135	6337673.375
215	355705.6249	6337683.3
216	355715.3792	6337693.055
217	355766.4179	6337731.498
218	355777.0228	6337741.236
219	355784.7006	6337751.137
220	355788.4203	6337761.253
221	355788.2412	6337768.358
222	355785.9466	6337775.517
223	355776.0381	6337789.685
224	355751.7044	6337809.401
225	355722.1388	6337825.412
226	355664.4798	6337849.849
227	355623.4012	6337879.835
228	355577.5688	6337906.259
229	355568.5482	6337915.18
230	355563.2917	6337923.986
231	355558.3869	6337940.049
232	355551.022	6337977.643
233	355549.6908	6337996.799
234	355553.503	6338007.62
235	355575.7391	6338033.84
236	355580.5202	6338044.389
237	355581.2818	6338059.65
238	355572.9164	6338104.716
239	355571.7022	6338121.62
240	355575.1224	6338135.698
241	355589.236	6338157.565
242	355592.6712	6338168.36
243	355592.5521	6338179.843
244	355589.4958	6338191.935
245	355584.1228	6338204.549
246	355544.1488	6338272.612
247	355535.2708	6338294.305
248	355532.8019	6338312.183
249	355537.471	6338356.543
250	355537.2449	6338368.528
251	355524.1561	6338415.775
252	355525.1173	6338444.681
253	355533.3376	6338498.338
254	355533.5197	6338529.908

Coordinates ¹		
Vertex	Easting	Northing
255	355669.9016	6338549.522
256	355636.3532	6338788.534
257	355468.2379	6338764.362
258	355486.0709	6338786.892
259	355445.2503	6338782.81
260	355460.558	6338804.241
261	355476.8862	6338821.589
262	355487.0914	6338837.918
263	355493.2145	6338854.246
264	355491.1734	6338873.636
265	355477.9067	6338890.984
266	355464.64	6338906.292
267	355475.8657	6338926.702
268	355485.0503	6338962.42
269	355488.5285	6339016.019
270	355474.2678	6339058.219
271	355430.8224	6339049.207
272	355436.9468	6338912.439
273	355406.718	6338958.67
274	355406.3618	6338907.672
275	355413.2132	6338797.484
276	355384.1088	6338766.488
277	355088.7125	6338812.032
278	355074.8033	6338833.836
279	355086.2572	6338847.995
280	355158.7165	6338902.9
281	355095.7282	6338985.464
282	355100.7145	6339019.034
283	355019.5944	6339031.162
284	354999.702	6339034.136
285	354949.3993	6339055.461
286	354914.0339	6339100.776
287	354903.5099	6339161.362
288	354918.4558	6339213.79
289	354957.3615	6339261.673
290	355021.0168	6339258.656
291	355032.1683	6339252.737
292	355057.6426	6339238.45
293	355111.0587	6339207.847
294	355132.759	6339193.38
295	355154.4593	6339173.349
296	355176.1596	6339151.648
297	355198.9727	6339124.94
298	355267.9685	6339045.373

Coordinates ¹		
Vertex	Easting	Northing
299	355310.2563	6339070.968
300	355365.898	6339088.217
301	355379.8085	6339067.629
302	355421.3876	6339083.222
303	355463.6195	6339089.985
304	355461.6587	6339099.942
305	355455.4627	6339113.957
306	355441.8092	6339127.7
307	355413.7604	6339142.32
308	355392.2049	6339146.316
309	355349.1339	6339145.765
310	355338.4871	6339146.942
311	355330.7742	6339150.025
312	355314.5882	6339161.987
313	355289.1462	6339166.632
314	355269.5102	6339174.344
315	355258.6598	6339181.818
316	355245.0254	6339195.774
317	355213.3342	6339246.487
318	355199.8153	6339264.278
319	355158.6977	6339298.172
320	355147.1433	6339309.774
321	355123.2565	6339346.423
322	355117.416	6339349.312
323	355109.9448	6339349.842
324	355068.5342	6339345.162
325	355117.6766	6339652.622
326	355550.2402	6339583.617
327	355576.3593	6339431.622
328	355525.5186	6339425.709
329	355531.9145	6339389.629
330	355583.0992	6339392.407
331	355586.5296	6339372.449
332	355535.4502	6339369.686
333	355563.5946	6339208.952
334	355612.1314	6339223.46
335	355612.6778	6339220.288
336	355560.5946	6339204.72
337	355565.7333	6339187.531
338	355578.939	6339191.213
339	355583.7397	6339175.155
340	355603.3996	6339181.31
341	355618.9993	6339183.497
342	355625.7546	6339144.186

Coordinates ¹		
Vertex	Easting	Northing
343	355644.3082	6339154.984
344	355624.98	6339267.451
345	355665.813	6339279.627
346	355663.1748	6339294.965
347	355765.5285	6339309.428
348	355761.3587	6339339.956
349	355850.9637	6339420.835
350	355885.3896	6339382.592
351	355897.4398	6339393.442
352	355898.8761	6339391.848
353	355916.726	6339407.919
354	355921.3283	6339402.81
355	355951.1932	6339429.749
356	355910.712	6339474.699
357	355942.1583	6339503.048
358	355937.1502	6339540.082
359	355945.4194	6339544.483

Coordinates ¹		
Vertex	Easting	Northing
360	355948.8351	6339553.537
361	355932.9574	6339571.07
362	355874.5629	6340000.771
363	356089.1884	6340029.934
364	356094.4185	6340035.212
365	356086.4799	6340036.879
366	356060.9395	6340102.362
367	355678.5759	6340204.001
368	355661.6896	6340226.428
369	355622.1051	6340206.968
370	355619.6748	6340201.311
371	355612.8456	6340219.758
372	355419.9331	6340404.335
373	355246.2423	6340528.696
374	355314.5451	6340956.877
375	354351.2032	6342167.55

¹ Coordinate reference system is MGA 56

SCHEDULE F – AREA OF OPERATIONS – DRINKING WATER RETICULATION AND SEWERAGE SERVICES INFRASTRUCTURE

Table F.1 Vertices for area of operation

Coordinates ¹			Coordinates ¹		
Vertex	Easting	Northing	Vertex	Easting	Northing
1	354351.202	6342167.55	40	356929.2233	6341547.347
2	355947.934	6341892.376	41	356943.7824	6341533.631
3	355893.8822	6341555.271	42	356949.5473	6341526.21
4	355917.771	6341547.83	43	356950.8679	6341520.039
5	356031.5262	6341528.329	44	356941.1511	6341492.611
6	356043.519	6341524.023	45	356973.8359	6341489.636
7	356053.7789	6341517.656	46	356970.004	6341447.536
8	356059.261	6341523.278	47	356958.5022	6341430.795
9	356063.6657	6341524.442	48	356910.2436	6341435.186
10	356153.4323	6341510.022	49	356904.0868	6341367.364
11	356156.084	6341503.831	50	356904.8169	6341356.571
12	356149.3958	6341462.815	51	356907.5832	6341347.884
13	356141.8295	6341441.202	52	356937.9665	6341282.014
14	356130.219	6341420.268	53	356945.1096	6341271.521
15	356117.9658	6341405.026	54	356953.5704	6341264.533
16	356103.4837	6341393.866	55	356963.0002	6341260.149
17	356086.71	6341386.607	56	357001.7426	6341253.436
18	356068.6555	6341383.683	57	356976.796	6341088.994
19	356062.9218	6341320.683	58	356933.899	6340819.976
20	356066.5417	6341316.339	59	356697.067	6340862.109
21	356148.1916	6341308.907	60	356717.346	6340981.24
22	356152.536	6341312.527	61	356698.489	6340984.596
23	356155.7855	6341347.523	62	356547.095	6340995.2
24	356159.0312	6341363.55	63	356539.4947	6340910.934
25	356200.9918	6341481.612	64	356538.803	6340910.934
26	356207.3885	6341492.743	65	356474.5856	6340914.195
27	356216.5725	6341502.651	66	356467.6338	6340857.036
28	356227.7845	6341510.189	67	356519.4781	6340853.412
29	356240.426	6341514.954	68	356523.8843	6340734.862
30	356318.5379	6341529.796	69	356523.2067	6340709.112
31	356335.2867	6341531.355	70	356514.0588	6340653.717
32	356531.1755	6341529.481	71	356628.492	6340635.63
33	356634.189	6341520.105	72	356663.771	6340597.367
34	356640.249	6341533.688	73	356655.421	6340548.975
35	356652.058	6341542.73	74	356518.744	6340571.539
36	356843.4335	6341559.485	75	356507.647	6340509.879
37	356878.9466	6341561.374	76	356459.461	6340518.274
38	356899.3864	6341560.188	77	356457.642	6340507.902
39	356915.0473	6341556.156	78	356314.239	6340533.244

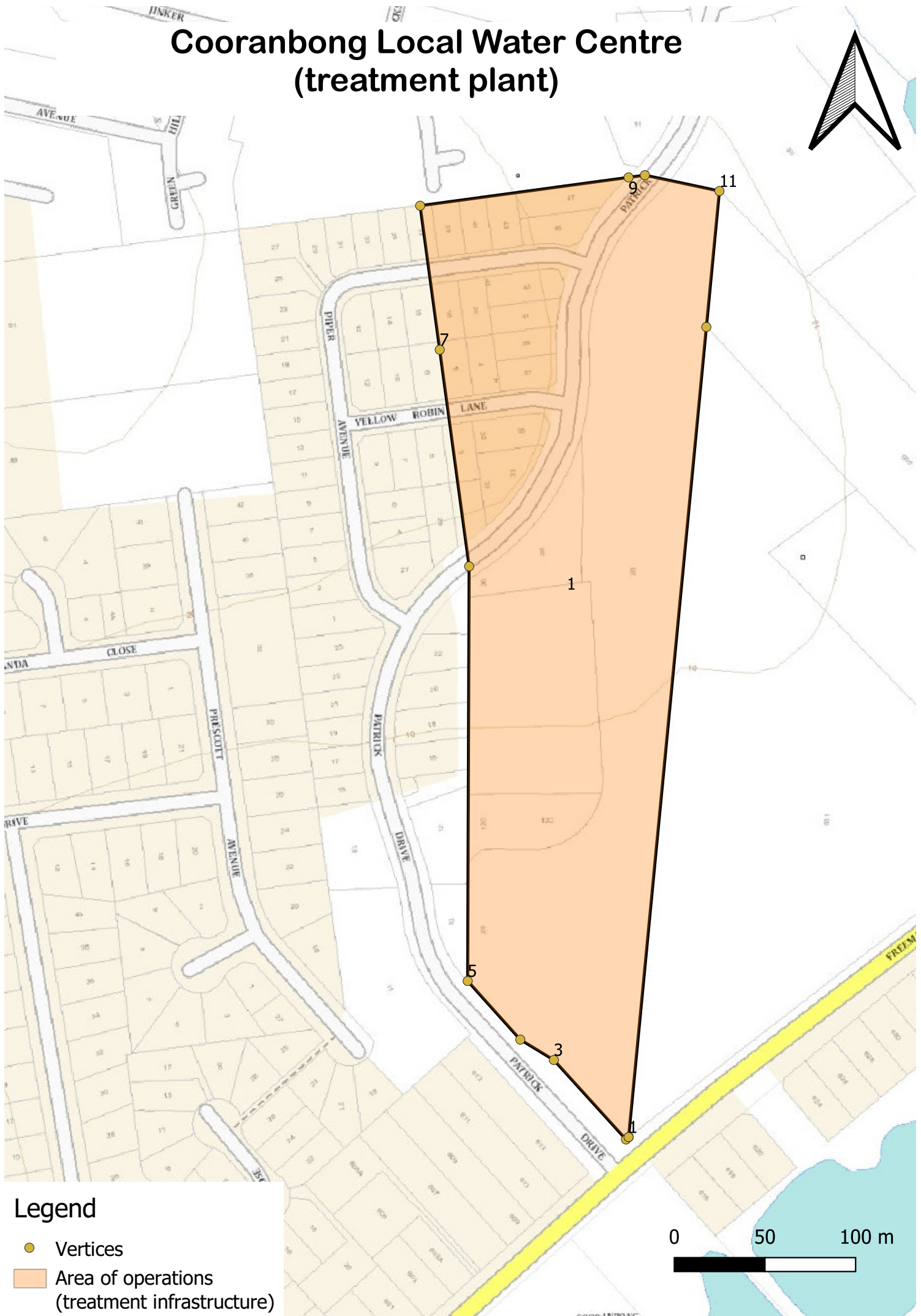
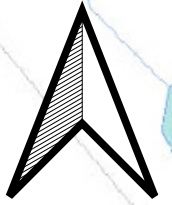
Coordinates ¹		
Vertex	Easting	Northing
79	356314.179	6340540.351
80	356255.557	6340549.401
81	356241.003	6340473.322
82	356251.795	6340469.873
83	356238.394	6340391.931
84	356228.412	6340393.983
85	356218.483	6340342.249
86	356253.676	6340334.913
87	356249.597	6340308.5
88	356308.787	6340296.974
89	356297.856	6340238.541
90	356377.774	6340225.556
91	356373.42	6340204.076
92	356271.293	6340220.551
93	356235.132	6340161.656
94	356281.62	6340098.924
95	356320.705	6340027.191
96	356341.037	6340032.67
97	356370.51	6340204.431
98	356373.42	6340204.076
99	356332.72	6339966.2
100	356323.68	6339976.503
101	356251.424	6339906.549
102	356139.306	6340022.406
103	356089.208	6339500.483
104	356087.789	6339499.202

Coordinates ¹		
Vertex	Easting	Northing
105	356102.181	6339485.034
106	356191.06	6339385.868
107	356101.721	6339305.283
108	356018.411	6339397.769
109	356004.08	6339423.674
110	356067.507	6339480.903
111	356000.322	6339555.491
112	355942.156	6339503.049
113	355937.149	6339540.083
114	355945.422	6339544.484
115	355948.837	6339553.537
116	355932.958	6339571.07
117	355874.564	6340000.771
118	356089.192	6340029.935
119	356060.937	6340102.361
120	355678.579	6340204.001
121	355678.5746	6340204.001
122	355661.6883	6340226.428
123	355622.1038	6340206.968
124	355619.6735	6340201.311
125	355612.8443	6340219.758
126	355419.9318	6340404.335
127	355246.241	6340528.697
128	355277.225	6340723.274
129	355314.438	6340956.788
130	354351.202	6342167.55

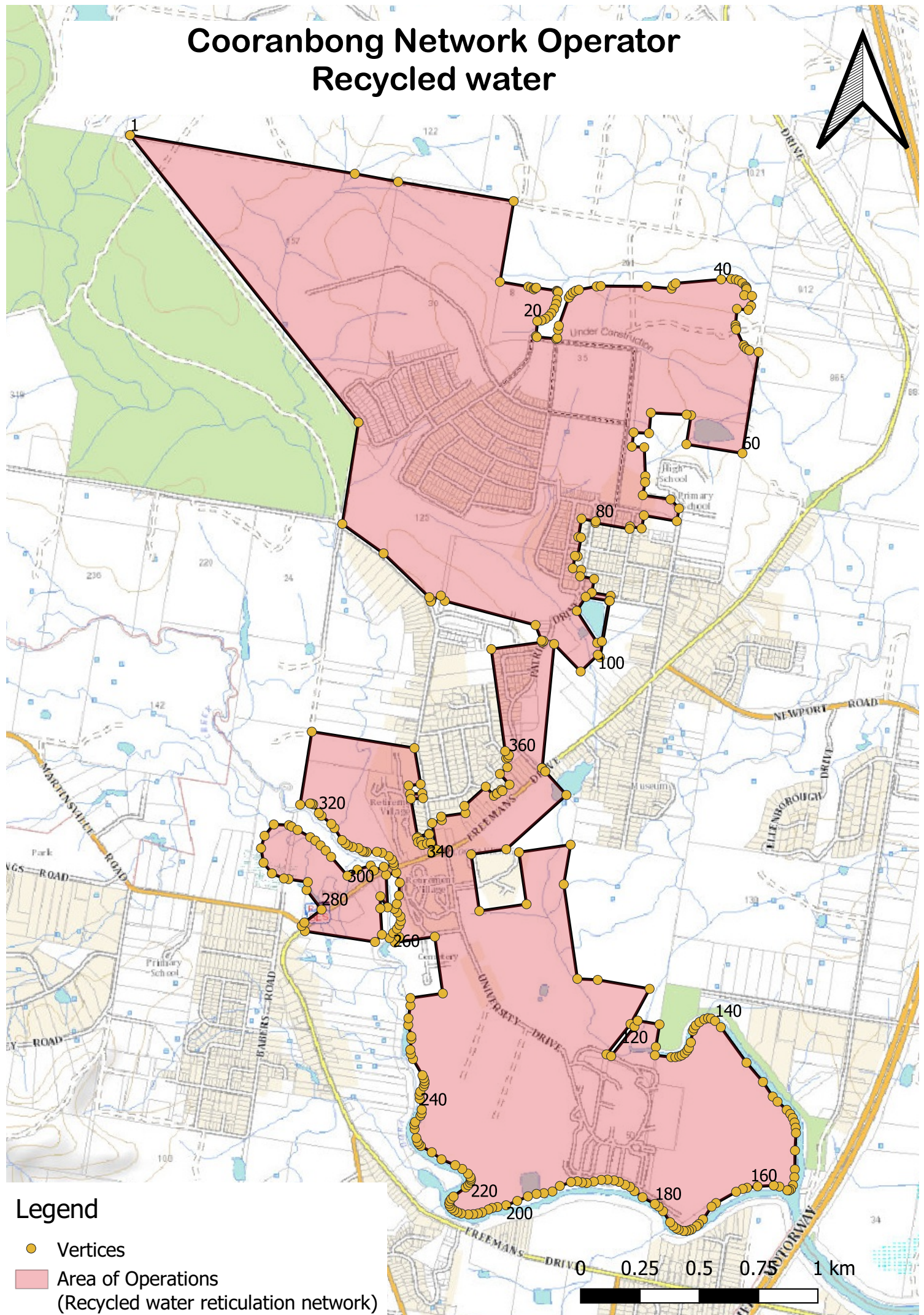
¹ Coordinate reference system is MGA 56

SCHEDULE G – AREA OF OPERATIONS – MAPS

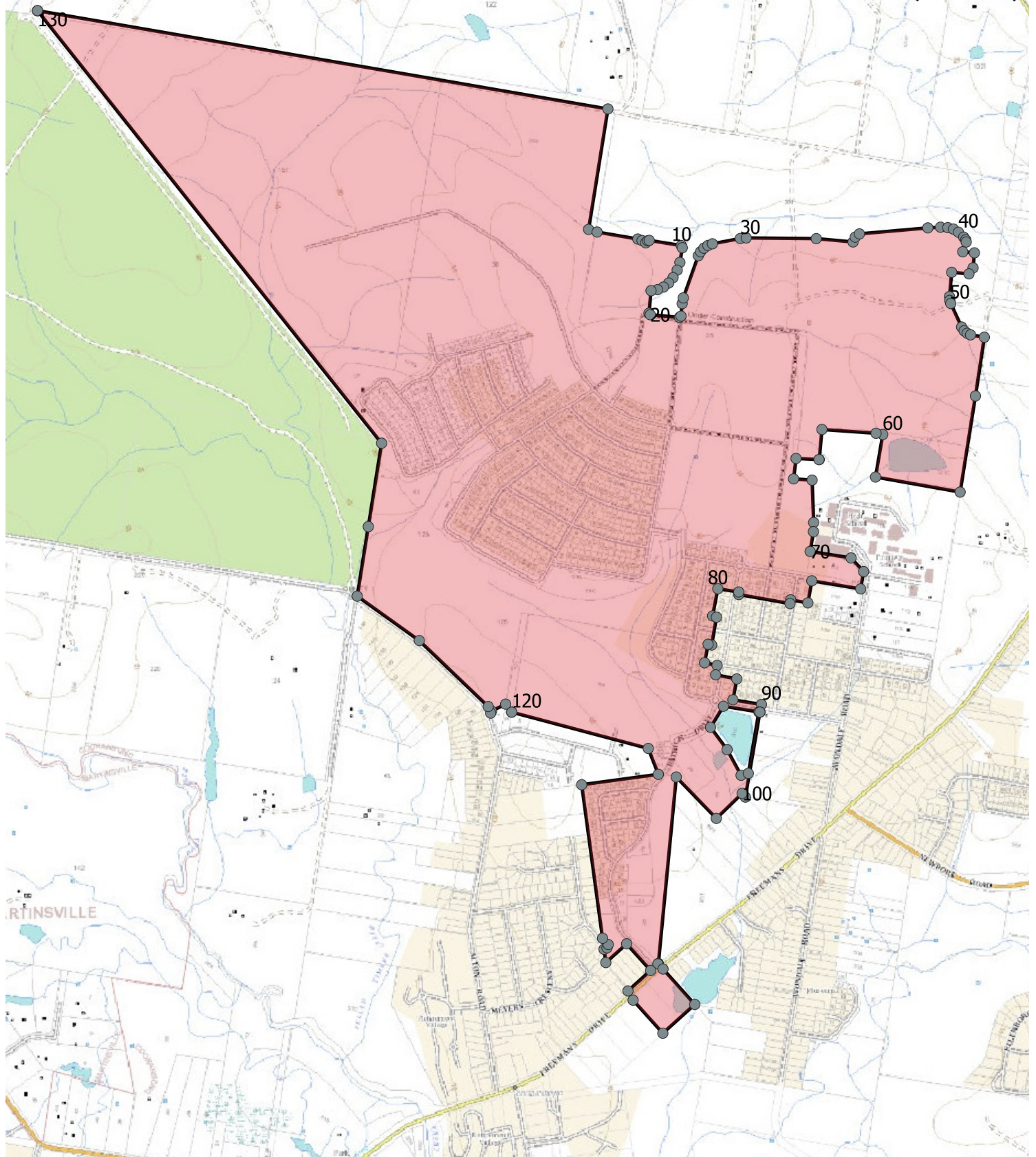
Cooranbong Local Water Centre (treatment plant)



Cooranbong Network Operator Recycled water



Cooranbong Network Operator Drinking water and sewerage



Legend

- Vertices
- Area of Operations
(Drinking water and sewerage reticulation network)

0 0.25 0.5 0.75 1 km

