

# Community Engagement Plan

---

## Proposed SRV from 2023/24



Record of versions

Version	Date Published	Reason for Amendments	Resolution	Author or Document Owner

## Contents

<b>1</b>	<b>Introduction</b>	<b>4</b>
<b>2</b>	<b>Moving Forward</b>	<b>5</b>
<b>3</b>	<b>Why are we engaging?</b>	<b>6</b>
<b>4</b>	<b>What is Community Engagement?</b>	<b>7</b>
<b>5</b>	<b>Values guiding the community engagement</b>	<b>8</b>
<b>6</b>	<b>Roles and Responsibilities</b>	<b>8</b>
<b>7</b>	<b>Who will we engage?</b>	<b>9</b>
<b>8</b>	<b>How and when will we engage?</b>	<b>10</b>
<b>9</b>	<b>Reporting back and closing the loop</b>	<b>11</b>
<b>10</b>	<b>Evaluation</b>	<b>11</b>

# 1 Introduction

The SRV Community Engagement Plan provides the framework within which Council will engage with its community regarding ensuring that Council remains financially sustainable to continue to provide services and infrastructure in the future.

Genuine engagement with our community will assist to shape our region's aspirations, build foundations for our community and provide opportunities for all voices to be heard. Our goal through this framework is to achieve meaningful planning and service delivery outcomes that reflect our community's priorities and needs.

Council undertook intensive Community Engagement during the preparation of the Snowy Monaro 2042 Community Strategic Plan (CSP), Delivery Program 2022-2026 and the Operational Plan 2022/2023 and the Resourcing Strategy 2022 - 2032.

Council further engaged with the community through the Community Satisfaction survey, and more recently through a Financial Sustainability survey.

All community feedback to date indicates that the Snowy Monaro community do not wish to have their service levels reduced.

Like many other councils in NSW, Council is facing challenges in maintaining financial sustainability over the long-term. Over the last few months Council has been carefully reviewing its current financial settings and strategies, as well as reviewing operations with a view to continue to improve productivity. Council has also commissioned an independent review of its financial sustainability. The prime objective of the review was to identify robust options to ensure the Council can operate sustainably and efficiently into the future.

The assessment of Council's financial sustainability concluded that based on the independent financial forecast of Council's operating result, cash availability and the required investment in assets, Council is not financially sustainable under the current financial settings. Council will not be able to sustain current service levels and the associated asset maintenance and renewal expenditure requirements.

The review provided several recommendations which Council will implement over a period of time. However, the review indicated that to remain financially sustainable, including ensuring that Council has the necessary unrestricted cash to continue to operate, Council needs to take immediate action to increase its revenue and review service levels.

Council's main revenue stream is income from rates. In NSW income from rates is capped each year by the Independent Pricing and Regulatory Tribunal. The mechanism by which a council can increase the rates by more than the cap is through a Special Rate Variation Application (SRV).

For Council to consider the potential preparation of an Application for an SRV in 2023/24 it must be demonstrated that the Council's Community Engagement Plan for the proposed SRV demonstrates an appropriate variety of engagement methods to ensure community awareness and input occurred.

This document sets out the levels and methods of engagement that Council will undertake regarding the proposed SRV.

## 2 Moving Forward

For council to consider a potential application for an SRV in 2023/24, it must be determined if the community has the capacity and willingness to pay increased rates and to assess the Community's need / desire for service levels.

Council is required to undertake their planning and reporting activities in accordance with the Local Government Act 1993 and the Local Government (General) Regulation 2021. A requirement under this framework is the production of a number of key documents including the Community Strategic Plan (CSP), Delivery Program and Operational Plan.

The independent review of Council's financial sustainability informed the review of the adopted Resourcing Strategy 2022-2032 comprised of:

- Long-Term Financial Planning
- Workforce Management Planning
- Asset Management Planning.

The revised documents have been considered by Council at their meeting on 23 November 2023 and have been approved to be placed on public exhibition to seek community feedback.

The three documents are integrated with the financial impacts detailed in the Long-Term Financial Plan. The Long-Term Financial Plan outlines three different scenarios regarding Council's financial sustainability, including varying levels of rating revenue and the associated operating result, cash availability, and investment in assets. Each scenario presented represents a different outcome in terms of service levels provided to the Snowy Monaro community.

Each scenario refers to the rate increase inclusive of rate-pegging. Rate-pegging for 2023/24 is 4%. A rate-pegging increase of 2.5% is assumed for each year thereafter. The Long-Term Financial Plan considers the following three case scenarios:

1. **Base Case** – Rating revenue is limited to the rate-peg increase as determined by IPART. This case scenario results in a deterioration in service levels, as revenue generated is not sufficient to generate the cash required for investment in infrastructure.
2. **Scenario Two** – Rating revenue is increased by 53% in 2023/24 and then by the rate-peg each year after that. The total rating revenue increase under this scenario is an additional \$97.9 million compared to Scenario 1 over a 10-year period. This increase in revenue will enable an additional investment of \$66.3 million in asset renewal, and current service levels in other areas to be maintained. This case scenario enables Council to maintain current service levels (including assets) and allows for investment in resources and capability with a focus on asset management.
3. **Scenario Three** – Rating revenue is increased by 12.25% in 2023/24 and then 10.75% in each of the following 4 years. The total rating revenue increase under this scenario is an additional \$76.7 million compared to Scenario 1 over a 10-year period. This increase in revenue will enable an additional investment of \$53.1 million in asset renewal when compared to Scenario 1 but will require current service levels in other service areas to be reduced. The staged introduction of a SRV over 5 years will enable a staged introduction of increased expenditure on asset renewals to maintain current service levels over time and allows for investment in resources and capability with a focus on asset management capability.

### 3 Why are we engaging?

Council is proposing to apply to IPART for Special Rate Variation to commence from 2023/24. As part of its application Council needs to demonstrate that it has taken the necessary steps to ensure community awareness and engagement regarding the Special Rate Variation.

Council needs to ensure that the community has adequate opportunities to consider the proposed SRV increase, to provide feedback to the Council and for the council to consider this feedback. The nature and extent of consultation should be appropriate, proportionate, and tailored to the purpose, extent and magnitude of the proposed increase, and the ratepayers who will primarily be affected. Council needs to demonstrate:

- it has clearly communicated the full impact of the proposed rate increases to ratepayers
- it has clearly articulated whether the SRV will result in either a temporary or permanent
- increase in the council's total income
- it has clearly communicated what the SV would fund
- it has used an appropriate variety of engagement methods to ensure community awareness and input into the SRV process
- the community is aware of the need for and extent of the rate rise.

IPART will assess whether Council's consultation with ratepayers has been effective based on:

- the process the council used to consult with and engage the community about the proposed SRV, including its timeliness
- the content of the material used for consultation and its clarity
- whether an effective variety of engagement methods were used to reach as many ratepayers as possible across all relevant rating categories in order to ensure the community is aware of the need for, and extent of, the proposed rate increases
- whether the opportunities for input and feedback on the proposal made available to the community were effective
- the outcomes from consultation and any council response to community feedback
- how the IP&R documents set out the extent of the requested rate increases

## 4 What is Community Engagement?

Council is committed to our engagement practices of delivering communication aligned to the International Association of Public Participation (IAP2) principles of the Public Participation Spectrum.

The Table below outlines the different levels of input and influence the community may have over a particular project. It is our goal to give the people of the Snowy Monaro as much say as the legislation, regulation, and practical realities of a given project allow. For the purpose of the SRV Community Engagement Plan, Council will Inform, Consult and Involve the identified stakeholders.

Table 5-1 – IAP 2 Framework

Increasing impact on the decision					
	<b>Inform</b>	<b>Consult</b>	<b>Involve</b>	<b>Collaborate</b>	<b>Empower</b>
<b>Public Participation Goal</b>	To provide the public with balanced and objective information to assist them in understanding the problem, alternatives opportunities and/ or solutions	To obtain public feedback on analysis, alternatives and/or decisions	To work directly with the public throughout the process to ensure that public concerns and aspirations are consistently understood and considered	To partner with the public in each aspect of the decision including the development of alternatives and the identification of the preferred solution	To place final decision making in the hands of the public
<b>Promise to the Public</b>	We will keep you informed	We will keep you informed, listen to and acknowledge concerns and aspirations, and provide feedback on how public input influenced the decision	We will work with you to ensure that your concerns and aspirations are directly reflected in the alternatives developed and provide feedback on how public input influenced decision	We will look to you for advice and innovation in formulating solutions and incorporate your advice and recommendations into the decisions to the maximum extent possible	We will implement what you decide

## 5 Values guiding the community engagement

The SRV Community Engagement Plan is based on Council's corporate values:

- Solutionary
- Together
- Accountable
- Innovative
- Caring

## 6 Roles and Responsibilities

The Community Engagement process will be based on the roles and responsibilities in the Table below:

*Table 7-1 – Roles and Responsibilities*

Roles and Responsibilities	
Mayor and Councillors	Demonstrate commitment to community through effective engagement including liaison with community, collaboration and contribution to engagement. Establish partnerships while representing and advocating for the best interests of the community
CEO	Ensure compliance with legislative obligations, oversee adequate delegation and endorse initiatives that are appropriate and inclusive.
Employees	Ensure planned processes are consistent, aligned with relevant regional, state and federal equivalents and delivered in alignment with Council's values. Report back on how data collected through engagement has influenced the decision. Regularly monitor and evaluate the effectiveness of processes.
Community	Openly and actively participate in a variety of engagement opportunities. Provide respectful contributions through various means to ensure the community's voice is heard in decision-making activities. Deliver feedback on practices or process where improvements are identified.



## 7 Who will we engage?

IAP2 considers the community to be any individual or group of individuals, organisation or political entity with an interest in the outcome of a decision – they are often referred to as stakeholders. They may be, or perceive that they may be, affected directly or indirectly by the outcome of the decision. Internal Stakeholders (individuals who work for or with the decision-making organisation) are also part of the community and the community participation process should reflect their needs as well.

The Community, the Elected Representatives and Employees have been identified as stakeholders for the SRV Community Engagement Plan.

*Table 6-1 – Stakeholder Identification*

Stakeholder identification	
Community	The proposed SRV is a community wide issue and will impact the community directly. The impact may be through increased rates and/or changes to service levels.
Elected Representatives	Councillors are an important connection point/source with our community
Employees	Employees in most instances are also residents of the Snowy Monaro region and as such, are an important connection with our community.

## 8 How and when will we engage?

The SRV Community Engagement Action Plan below outlines actions and timeframes for engaging the community in the potential application for an SRV in 2023/24.

Table 8-1 – SRV Community Engagement Plan

Technique	Engagement Method	Timeframe
Inform	<b>Council Website</b> Fact Sheet	28 November 2022 – 5 January 2023
	<b>Pop-Up Sessions</b> Two-hour session each at Jindabyne, Cooma and Bombala	8 December 2022 – 9 December 2022
	<b>Media</b> Media release	28 November 2022 – 5 January 2023
	<b>Online Community Consultation Sessions</b> (Presentation and Q&A)	10 <sup>th</sup> and 18 <sup>th</sup> of January 2023
	<b>Printed promotional material</b> Fact Sheet, Letter, Newsletter	28 November 2022 – 5 January 2023
	<b>Social Media</b>	28 November 2022 – 5 January 2023
	<b>eNewsletter</b>	28 November 2022 – 5 January 2023
Consult	<b>Pop-Up Sessions</b> Two-hour session each at Jindabyne, Cooma and Bombala	8 December 2022 – 9 December 2022
	<b>Online Community Consultation Sessions</b> (Presentation and Q&A)	10 <sup>th</sup> and 18 <sup>th</sup> of January 2023
	<b>Council Website</b> Have Your Say – Online Survey Written Submissions <b>Hard copy survey at key Council locations</b>	28 November 2022 – 5 January 2023
Involve	<b>Pop-Up Sessions</b> Two-hour session each at Jindabyne, Cooma and Bombala	8 December 2022 – 9 December 2022
	<b>Council Website</b> Have Your Say – Online Survey Written Submissions <b>Hard copy survey at key Council locations</b>	28 November 2022 – 5 January 2023
Collaborate	<b>Council Website</b> Have Your Say – Online Survey	28 November 2022 – 5 January 2023

	Written submissions <b>Hard copy survey at key Council locations</b>	
--	---	--

## 9 Reporting back and closing the loop

After the community engagement is completed, Council will:

- Collate and analyse what the community told us
- Report back with results to the community
- Inform decision makers
- Inform the community of the decision
- Explain how the decision was made and the influence of community input
- Evaluate the engagement process

The outcome of the community engagement and subsequent relevant decisions will be communicated through a variety of methods including:

- Councillor briefings
- Facebook updates and information posted on Council's social media
- Website Updates
- Media Releases; and
- Reports to Council, including seeking endorsement for lodging an SRV application

## 10 Evaluation

To ensure the Community Engagement Strategy – Special Rate Variation is effective in achieving its objectives, a number of indicators will be used to measure success. Council will assess the following:

- Number of people who participated in each engagement pop-up and activity
- Number of enquiries and submissions received
- Social media engagement
- Traditional media coverage; and
- Number of email enquiries.

# Special Rate Variation

## Proposed Options 2023/24

At the Extraordinary Council Meeting on Thursday 24 November 2022, the Council decided to proceed with notifying the Independent Pricing and Regulatory Tribunal (IPART) that Snowy Monaro Regional Council intends to apply for a permanent Special Rate Variation (SRV).

### What is a Special Rate Variation (SRV) and Rate-Pegging?

Rates increase each year in line with an amount set by the State Government. This amount is calculated every year and is called the 'rate peg'. This is decided by the Independent Pricing and Regulatory Tribunal (IPART). For the 2023/24 financial year the rate peg applied to Snowy Monaro Regional Council, will be 4.0%.

If a council's rate revenue is not enough to maintain service levels, it can apply to IPART to increase overall rate revenue by more than the rate peg. This is known as a Special Rate Variation (SRV). In order to apply for an SRV, councils must demonstrate to the community and IPART that they need the money and have implemented improvements to be more efficient and productive.

### Why do we need a Special Rate Variation (SRV)?

The rate increases set by the NSW State Government have not kept pace with cost escalations faced by Council in providing services to our community. Like many other NSW councils, SMRC has not generated revenue sufficient to undertake enough investment in community assets.

Our service delivery costs have increased significantly – fuelling our vehicles to repair roads, clean toilets, mow lawns, pay wages, etc – and the costs involved in purchasing materials, hiring contractors and paying suppliers has also increased.

The additional funds received through the SRV will increase the money available to address and correct Council's operating position and will enable sufficient funds to be available for renewal and maintenance of assets and the continuation of current service levels.

### What will happen if the Special Rate Variation is not implemented?

If the SRV is not approved, Council will need to implement service level reductions totalling \$28.8 million over the next ten years. Services will need to be discontinued, roads and buildings will continue to deteriorate, and unsafe facilities will be closed so that necessary funds can be redirected to keep essential infrastructure safe and functional for our community.

## OPTIONS

### Option 1 – 53% rate increase to be paid in 2023/24

Enables an additional investment of \$64.3 million in asset renewal to stabilise the current infrastructure backlog and to undertake additional renewal and maintenance of our roads and other community assets. Current service levels will be maintained while also progressively improving the operating result i.e. financial sustainability.

### Option 2 – 55.25% rate increase spread over five years starting from 2023/24

Enables an additional staged investment of \$51.1 million in asset renewal to progressively stabilise the current infrastructure backlog and to undertake additional renewal and maintenance of our roads and other community assets. Over time, current service levels will be maintained while also progressively improving the operating result i.e. financial sustainability.

### Option 3 – No SRV, Rate Peg Only

Assets and service levels will deteriorate, and the current infrastructure backlog will continue to grow as additional assets deteriorate below satisfactory condition. Council will be required to reduce services and close unsafe facilities.



## What is the impact of the Special Rate Variation (SRV) on my rates?

Table 1 shows the impact of implementing the SRV on the average rates by each rate category.

**Table 1 - Increase in 2023/24 Average Rate**

Rating Category	2022/23 Rate	Option 1	Option 2	Option 3
Residential	\$980.29	\$1,499.84	\$1,100.38	\$1,019.50
Farmland	\$2,026.30	\$3,100.24	\$2,274.52	\$2,107.35
Business	\$1,071.29	\$1,639.07	\$1,202.52	\$1,114.14
Electricity Generation	\$43,806.17	\$67,023.44	\$49,172.43	\$45,558.42

## What will the SRV funds be used for?

Three options are provided for consideration based on rate increases;

- two SRV options
- one limited to the rate-peg

The proposed SRV will generate the necessary revenue that will be used to fund our existing services and provide required funding for the following:

- Resealing bitumen roads
- Putting gravel back on our unsealed roads
- Improve our stormwater infrastructure
- Replacement of bridges that are failing
- Bringing our community and other buildings back to a good condition
- Investment in asset management capability

Option 1 will enable for the above service levels to commence from 2023/24, whereas Option 2 will allow for a staged increase in asset renewals and maintenance of current service levels over a number of years.

The Resourcing Strategy is on public exhibition, and can be accessed on Council's [Your Say website](#) or at any Council office. Residents are being asked for their views on the three options.

## Current council services



To find out more scan the QR Code or visit: [yoursaysnowymonaro.com.au](https://yoursaysnowymonaro.com.au)



24/7 Customer service line  
**1300 345 345**

PO Box 714 COOMA NSW 2630  
E [council@snowymonaro.nsw.gov.au](mailto:council@snowymonaro.nsw.gov.au)  
W [www.snowymonaro.nsw.gov.au](http://www.snowymonaro.nsw.gov.au)



# Special Rate Variation

## Proposed Options 2023/24

At the Extraordinary Council Meeting on Thursday 24 November 2022, the Council decided to proceed with notifying the Independent Pricing and Regulatory Tribunal (IPART) that Snowy Monaro Regional Council intends to apply for a permanent Special Rate Variation (SRV).

### What is a Special Rate Variation (SRV) and Rate-Pegging?

Rates increase each year in line with an amount set by the State Government. This amount is calculated every year and is called the 'rate peg'. This is decided by the Independent Pricing and Regulatory Tribunal (IPART). For the 2023/24 financial year the rate peg applied to Snowy Monaro Regional Council, will be 4.0%.

If a council's rate revenue is not enough to maintain service levels, it can apply to IPART to increase overall rate revenue by more than the rate peg. This is known as a Special Rate Variation (SRV). In order to apply for an SRV, councils must demonstrate to the community and IPART that they need the money and have implemented improvements to be more efficient and productive.

### Why do we need a Special Rate Variation (SRV)?

The rate increases set by the NSW State Government have not kept pace with cost escalations faced by Council in providing services to our community. Like many other NSW councils, SMRC has not generated revenue sufficient to undertake enough investment in community assets.

Our service delivery costs have increased significantly – fuelling our vehicles to repair roads, clean toilets, mow lawns, pay wages, etc – and the costs involved in purchasing materials, hiring contractors and paying suppliers has also increased.

The additional funds received through the SRV will increase the money available to address and correct Council's operating position and will enable sufficient funds to be available for renewal and maintenance of assets and the continuation of current service levels.

### What will happen if the Special Rate Variation is not implemented?

If the SRV is not approved, Council will need to implement service level reductions totalling \$28.8 million over the next ten years. Services will need to be discontinued, roads and buildings will continue to deteriorate, and unsafe facilities will be closed so that necessary funds can be redirected to keep essential infrastructure safe and functional for our community.

## OPTIONS

### Option 1 – 53% rate increase to be paid in 2023/24

Enables an additional investment of \$64.3 million in asset renewal to stabilise the current infrastructure backlog and to undertake additional renewal and maintenance of our roads and other community assets. Current service levels will be maintained while also progressively improving the operating result i.e. financial sustainability.

### Option 2 – 55.25% rate increase spread over five years starting from 2023/24

Enables an additional staged investment of \$51.1 million in asset renewal to progressively stabilise the current infrastructure backlog and to undertake additional renewal and maintenance of our roads and other community assets. Over time, current service levels will be maintained while also progressively improving the operating result i.e. financial sustainability.

### Option 3 – No SRV, Rate Peg Only

Assets and service levels will deteriorate, and the current infrastructure backlog will continue to grow as additional assets deteriorate below satisfactory condition. Council will be required to reduce services and close unsafe facilities.



## What is the impact of the Special Rate Variation (SRV) on my rates?

Table 1 shows the impact of implementing the SRV on the average rates by each rate category.

**Table 1 - Increase in 2023/24 Average Rate**

Rating Category	2022/23 Rate	Option 1	Option 2	Option 3
Residential	\$980.29	\$1,499.84	\$1,100.38	\$1,019.50
Farmland	\$2,026.30	\$3,100.24	\$2,274.52	\$2,107.35
Business	\$1,071.29	\$1,639.07	\$1,202.52	\$1,114.14
Electricity Generation	\$43,806.17	\$67,023.44	\$49,172.43	\$45,558.42

## What will the SRV funds be used for?

Three options are provided for consideration based on rate increases;

- two SRV options
- one limited to the rate-peg

The proposed SRV will generate the necessary revenue that will be used to fund our existing services and provide required funding for the following:

- Resealing bitumen roads
- Putting gravel back on our unsealed roads
- Improve our stormwater infrastructure
- Replacement of bridges that are failing
- Bringing our community and other buildings back to a good condition
- Investment in asset management capability

Option 1 will enable for the above service levels to commence from 2023/24, whereas Option 2 will allow for a staged increase in asset renewals and maintenance of current service levels over a number of years.

The Resourcing Strategy is on public exhibition, and can be accessed on Council's [Your Say website](#) or at any Council office. Residents are being asked for their views on the three options.

## Current council services



To find out more scan the QR Code or visit: [yoursaysnowymonaro.com.au](https://yoursaysnowymonaro.com.au)

24/7 Customer service line

1300 345 345

PO Box 714 COOMA NSW 2630

E [council@snowymonaro.nsw.gov.au](mailto:council@snowymonaro.nsw.gov.au)

W [www.snowymonaro.nsw.gov.au](https://www.snowymonaro.nsw.gov.au)



SCAN ME

# Special Rate Variation

## Proposed Options 2023/24

At the Extraordinary Council Meeting on Thursday 24 November 2022, the Council decided to proceed with notifying the Independent Pricing and Regulatory Tribunal (IPART) that Snowy Monaro Regional Council intends to apply for a permanent Special Rate Variation (SRV).

### What is a Special Rate Variation (SRV) and Rate-Pegging?

Rates increase each year in line with an amount set by the State Government. This amount is calculated every year and is called the 'rate peg'. This is decided by the Independent Pricing and Regulatory Tribunal (IPART). For the 2023/24 financial year the rate peg applied to Snowy Monaro Regional Council, will be 4.0%.

If a council's rate revenue is not enough to maintain service levels, it can apply to IPART to increase overall rate revenue by more than the rate peg. This is known as a Special Rate Variation (SRV). In order to apply for an SRV, councils must demonstrate to the community and IPART that they need the money and have implemented improvements to be more efficient and productive.

### Why do we need a Special Rate Variation (SRV)?

The rate increases set by the NSW State Government have not kept pace with cost escalations faced by Council in providing services to our community. Like many other NSW councils, SMRC has not generated revenue sufficient to undertake enough investment in community assets.

Our service delivery costs have increased significantly – fuelling our vehicles to repair roads, clean toilets, mow lawns, pay wages, etc – and the costs involved in purchasing materials, hiring contractors and paying suppliers has also increased.

The additional funds received through the SRV will increase the money available to address and correct Council's operating position and will enable sufficient funds to be available for renewal and maintenance of assets and the continuation of current service levels.

### What will happen if the Special Rate Variation is not implemented?

If the SRV is not approved, Council will need to implement service level reductions totalling \$28.8 million over the next ten years. Services will need to be discontinued, roads and buildings will continue to deteriorate, and unsafe facilities will be closed so that necessary funds can be redirected to keep essential infrastructure safe and functional for our community.

## OPTIONS

### Option 1 – 53% rate increase to be paid in 2023/24

Enables an additional investment of \$64.3 million in asset renewal to stabilise the current infrastructure backlog and to undertake additional renewal and maintenance of our roads and other community assets. Current service levels will be maintained while also progressively improving the operating result i.e. financial sustainability.

### Option 2 – 55.25% rate increase spread over five years starting from 2023/24

Enables an additional staged investment of \$51.1 million in asset renewal to progressively stabilise the current infrastructure backlog and to undertake additional renewal and maintenance of our roads and other community assets. Over time, current service levels will be maintained while also progressively improving the operating result i.e. financial sustainability.

### Option 3 – No SRV, Rate Peg Only

Assets and service levels will deteriorate, and the current infrastructure backlog will continue to grow as additional assets deteriorate below satisfactory condition. Council will be required to reduce services and close unsafe facilities.



## What is the impact of the Special Rate Variation (SRV) on my rates?

Table 1 shows the impact of implementing the SRV on the average rates by each rate category.

**Table 1 - Increase in 2023/24 Average Rate**

Rating Category	2022/23 Rate	Option 1	Option 2	Option 3
Residential	\$980.29	\$1,499.84	\$1,100.38	\$1,019.50
Farmland	\$2,026.30	\$3,100.24	\$2,274.52	\$2,107.35
Business	\$1,071.29	\$1,639.07	\$1,202.52	\$1,114.14
Electricity Generation	\$43,806.17	\$67,023.44	\$49,172.43	\$45,558.42

## What will the SRV funds be used for?

Three options are provided for consideration based on rate increases;

- two SRV options
- one limited to the rate-peg

The proposed SRV will generate the necessary revenue that will be used to fund our existing services and provide required funding for the following:

- Resealing bitumen roads
- Putting gravel back on our unsealed roads
- Improve our stormwater infrastructure
- Replacement of bridges that are failing
- Bringing our community and other buildings back to a good condition
- Investment in asset management capability

Option 1 will enable for the above service levels to commence from 2023/24, whereas Option 2 will allow for a staged increase in asset renewals and maintenance of current service levels over a number of years.

The Resourcing Strategy is on public exhibition, and can be accessed on Council's [Your Say website](#) or at any Council office. Residents are being asked for their views on the three options.

## Current council services



To find out more scan the QR Code or visit: [yoursaysnowymonaro.com.au](https://yoursaysnowymonaro.com.au)

24/7 Customer service line  
**1300 345 345**

PO Box 714 COOMA NSW 2630  
E [council@snowymonaro.nsw.gov.au](mailto:council@snowymonaro.nsw.gov.au)  
W [www.snowymonaro.nsw.gov.au](http://www.snowymonaro.nsw.gov.au)



# Special Rate Variation

## Proposed Options 2023/24

### What is the impact of the Special Rate Variation (SRV) on my rates?

Table 1 shows the impact of implementing the SRV on the average rates by each rate category.

**Table 1 - Increase in 2023/24 Average Rate**

Rating Category	2022/23 Rate	Rates Increase 2023/24		
		Option 1	Option 2	Option 3
Residential	\$980.29	\$1,499.84	\$1,100.38	\$1,019.50
Farmland	\$2,026.30	\$3,100.24	\$2,274.52	\$2,107.35
Business	\$1,071.29	\$1,639.07	\$1,202.52	\$1,114.14
Electricity Generation	\$43,806.17	\$67,023.44	\$49,172.43	\$45,558.42

Tables 2 to 5 show the impact of implementing the SRV on the average rates by each rate category between 2023/24 and 2027/28.

**Table 2 - Cumulative increase over 5 years – Residential Category - Average Rate**

Residential Category	Cumulative Increase over 5yrs 2023/24 to 2027/28					Total
	2023/24	2024/25	2025/26	2026/27	2027/28	
Option 1	\$519.55	\$557.05	\$595.48	\$634.88	\$675.26	<b>\$2,982.22</b>
Option 2	\$120.09	\$238.38	\$369.38	\$514.47	\$675.16	<b>\$1,917.48</b>
Option 3	\$39.21	\$64.70	\$90.82	\$117.60	\$145.05	<b>\$457.39</b>

**Table 3 - Cumulative increase over 5 years – Farmland Category - Average Rate**

Farmland Category	Cumulative Increase over 5yrs 2023/24 to 2027/28					Total
	2023/24	2024/25	2025/26	2026/27	2027/28	
Option 1	\$1,073.94	\$1,151.45	\$1,230.89	\$1,312.32	\$1,395.78	<b>\$6,164.37</b>
Option 2	\$248.22	\$492.73	\$763.53	\$1,063.44	\$1,395.58	<b>\$3,963.50</b>
Option 3	\$81.05	\$133.74	\$187.74	\$243.09	\$299.82	<b>\$945.43</b>

**Table 4 - Cumulative increase over 5 years – Business Category - Average Rate**

Business Category	Cumulative Increase over 5yrs 2023/24 to 2027/28					Total
	2023/24	2024/25	2025/26	2026/27	2027/28	
Option 1	\$567.78	\$608.76	\$650.76	\$693.81	\$737.94	<b>\$3,259.06</b>
Option 2	\$131.23	\$260.50	\$403.67	\$562.23	\$737.83	<b>\$2,095.47</b>
Option 3	\$42.85	\$70.705	\$99.255	\$128.519	\$158.514	<b>\$499.84</b>

**Table 5 - Cumulative increase over 5 years – Electricity Generation Category - Average Rate**

Electricity Generation Category	Cumulative Increase over 5yrs 2023/24 to 2027/28					Total
	2023/24	2024/25	2025/26	2026/27	2027/28	
Option 1	\$23,217.27	\$24,892.86	\$26,610.33	\$28,370.74	\$30,175.17	<b>\$133,266.37</b>
Option 2	\$5,366.26	\$10,652.29	\$16,506.58	\$22,990.20	\$30,170.81	<b>\$85,686.13</b>
Option 3	\$1,752.25	\$2,891.21	\$4,058.64	\$5,255.26	\$6,481.80	<b>\$20,439.16</b>



# We want to know what you think should happen with rates in the Snowy Monaro.

## Have your say on the future of rates.

There are three options for you to consider, with more details provided on the fact sheets included alongside this poster.

**Visit [www.yoursaysnowymonaro.com.au](http://www.yoursaysnowymonaro.com.au) today** to learn more, ask questions, or have your say on the Snowy Monaro's financial future.

## Want to speak to someone?

The Your Say page has details of all our in-person dates for this consultation.

You can also call us on 1300 345 345, or email [council@smrc.nsw.gov.au](mailto:council@smrc.nsw.gov.au)



6 December 2022

<Firstname> <Lastname>

<Address Line 1>

<Address Line 1>

<Address Line 1>

<Address Line 1>

Dear <Ratepayer>

### **Proposed Special Rate Variation for Snowy Monaro Regional Council**

I encourage your participation in providing feedback on the proposed Special Rate Variation (SRV) to be implemented in the 2023/24 Budget for Snowy Monaro Regional Council (SMRC).

At a recent meeting, your Council decided to lodge an Expression of Interest to IPART (Independent Pricing and Regulatory Tribunal NSW) for a permanent Special Rate Variation. This will impact the percentage increase to Council's total rates revenue, not how much your individual rates will change.

Following a detailed and independent analysis of our financial position, plus ongoing service reviews, it is clear that an increase in rates is a long overdue and critical step to ensure we can become financially sustainable while maintaining service levels over the long-term, as expected by our community.

The rate increases set by the NSW State Government have not kept pace with cost escalations faced by Council in providing services to our community. Like many other NSW councils, SMRC has not generated revenue sufficient to undertake enough investment in community assets.

The independent analysis showed that Council's financial position will deteriorate to an average operating deficit of \$8.5million a year which is not sustainable. The impact of the deficit is that we are unable to invest enough money each year in necessary maintenance and renewal. Therefore, our roads, parks and gardens, and buildings will continue to deteriorate. Services and associated service levels will also need to be reduced.

You, the community, have consistently indicated that you do not wish to see Council's infrastructure assets deteriorate and service levels reduced.





The proposed SRV will generate the necessary revenue that will be used to fund our existing services and provide required funding for the following:

- Resealing bitumen roads
- Putting gravel back on our unsealed roads
- Improve our stormwater infrastructure
- Replacement of bridges that are failing
- Bringing our community and other buildings back to a good condition
- Investment in asset management capability

If implemented, the SRV will apply to your general rates only. Revenue raised from a SRV must be accounted for each year in our annual report, showing where the money has been spent.

The SRV does not apply to your waste management, water and sewerage charges.

If the SRV is not approved, Council will need to implement service level reductions totalling \$28.8 million over the next ten years. Services will need to be discontinued, roads and buildings will continue to deteriorate, and unsafe facilities will be closed so that necessary funds can be redirected to keep essential infrastructure safe and functional for our community.

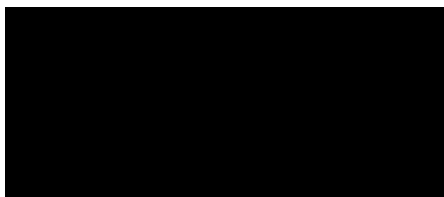
I encourage you to read the fact sheet enclosed with this letter and access further information on our Your Say website, where you can also select your preferred SRV option in the online survey by Sunday 22 January 2023.

**There are three options for your consideration:**

- Option 1 – 53% rate increase to be paid in 2023/24. Enables an additional investment of \$64.3 million in asset renewal to stabilise the current infrastructure backlog and to undertake additional renewal and maintenance of our roads and other community assets. Current service levels will be maintained while also progressively improving the operating result ie. financial sustainability.
- Option 2 – 55.25% rate increase spread over five years starting from 2023/24. Enables an additional staged investment of \$51.1 million in asset renewal to progressively stabilise the current infrastructure backlog and to undertake additional renewal and maintenance of our roads and other community assets. Over time, current service levels will be maintained while also progressively improving the operating result ie. financial sustainability.
- Option 3 – No SRV, Rate Peg Only. Assets and service levels will deteriorate, and the current infrastructure backlog will continue to grow as additional assets deteriorate below satisfactory condition. Council will be required to reduce services and close unsafe facilities.

Over the next few weeks, we will be engaging with our community, to ensure all interested people are informed and that you are provided an opportunity to provide feedback on the options presented for the SRV application proposal. The details of our various community engagement activities are on our Your Say website. Please scan the QR Code on page one of this letter or visit: [yoursaysnowymonaro.com.au](https://yoursaysnowymonaro.com.au) to have your say, read the documents, consider the options and complete the survey.

I look forward to working together with you to ensure that we are able to continue to provide services and infrastructure to the community over the long-term, and in line with expectations.



Councillor Narelle Davis  
Mayor, Snowy Monaro Regional Council



Facebook  
Feeds



Snowy Monaro Regional  
Council

Sponsored



Council is considering a potential increase to rates in the Snowy Monaro.

...see more



SNOWY MONARO  
REGIONAL COUNCIL

**Your rates, your  
choice, your future.**

Special Rate Variation consultation  
open until Sunday 22 January 2023.

[yoursaysnowymonaro.com.au](https://yoursaysnowymonaro.com.au)

**We want to know what you  
think should happen with**

**Learn more**



Like



Comment



Share



Instagram  
Feed

Instagram



snowymonaroregionalcouncil

Sponsored



SNOWY MONARO  
REGIONAL COUNCIL



**It's your future.  
Use your voice to shape it.**

Three options for the future of rates and  
services in the Snowy Monaro.

Have your say by Sunday 22 January 2023.

Learn more



snowymonaroregionalcouncil Council is considering a potential  
increase to rates in the Snowy Monaro... [more](#)



Facebook  
Marketplace



**Snowy Mon...**

Sponsored



**It's your future.  
Tell us what it looks like.**

Three options for the future of rates and services in the Snowy Monaro.

Have your say by Sunday 22 January 2023.

SNOWY MONARO REGIONAL COUNCIL

We want to know  
what you think shoul...

...





Snowy Monaro Regional...

Sponsored · 



Council is considering a potential increase to rates in the Snowy Monaro. [...see more](#)

## Council is considering a Special Rate Variation.



[YOURSAYSNOWYMONARO.COM...](https://yoursaysnowymonaro.com)

**We want to know what you...**

Rates may be changing. Tell us w...

[LEARN MORE](#)



5 comments · 1 share



Share



Facebook

Right column



We want to know  
what you think  
should happen...  
[yoursaysnowymonaro.com.au](http://yoursaysnowymonaro.com.au)



Instagram  
Explore



Explore



snowymonaroregionalcouncil  
Sponsored



SNOWY MONARO  
REGIONAL COUNCIL

Your rates, your  
choice, your future.

Special Rate Variation consultation  
open until Sunday 22 January 2023.

Learn more



snowymonaroregionalcouncil Council is considering a potential  
increase to rates in the Snowy Monaro.... [more](#)



Instagram

Explore home

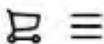
 snowymonarch  SNOWMY MONARCH  
Sponsored

It's your future.  
Tell us what it looks like.

[Learn more](#)

...ure of rates and  
...onard.  
...e journey by Sunday 22 January 2023

# Shop



 Search





**Snowy Monaro Regional Council**

Sponsored ·



Council is considering a potential increase to rates in the Snowy Monaro.

[...see more](#)



**Snowy Monaro: Have your say on a potential Special Rate Variation**

*Closes Sunday 22 January 2023*

[yoursaysnowymonaro.com.au](https://yoursaysnowymonaro.com.au)

**We want to know what you think should happen with...**

[Learn more](#)



Like



Comment



Share



Instagram  
Stories



snowymonaro regional council

Snowy Monaro, <sup>...</sup>x

we need your  
help...



*to build a*

[Learn more](#)



Facebook  
Stories



Snowy Monaro Regional Council

Opportunity

Snowy Monaro, <sup>...</sup>✕  
we need your  
help...



*to build a better  
tomorrow.*

[Learn more](#)





Messenger  
Stories



Snowy Monaro Regional Council

September

# Snowy Monaro, we need your help...



*to build a better  
tomorrow*

[Learn more](#)



Instagram  
Reels

Reels



SNOWY MONARO  
REGIONAL COUNCIL

# Your rates may be changing.

We need you to tell us what the future of rates  
and services in the Snowy Monaro will look like.



snowymonaroregionalcouncil  
Sponsored

Council is considering a potential increase to rates  
in the Snowy Monaro... [more](#)

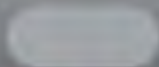
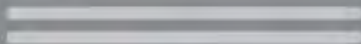


Learn more



Facebook

## Ads on Facebook Reels



**Council is considering  
a potential increase ...**

Snowy ... • Sponsored





Facebook

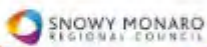
Search results



Snowy Monaro...👍

We want to know what you think should happen with rates in the Snowy Monaro.

Sponsored



**Your rates, your choice, your future.**

Special Rate Variation consultation  
open until Sunday 22 January 2023.



**Snowy Monaro Regional...**

SPONSORED \*\*\*

We want to know what you think should happen with...

Council is considering a potential increase to rates in the Snowy Monaro,

[...see more](#)

[Learn more >](#)



Audience Network

Native, banner and interstitial

**Council is considering a  
Special Rate Variation.**



Snowy

Council is considering a  
Special Rate Variation.

[Learn more](#)



Audience Network  
Rewarded videos



Snowy Monaro Regional Council



Snowy Monaro

we need your  
help...



*to build a better  
tomorrow.*









# Council News

Updates | Information | Consultation

## TELL US WHAT YOU THINK ABOUT CHANGES TO RATES

Council is considering a potential increase to rates in the Snowy Monaro.

Visit our Your Say website or visit your nearest Council office to learn all you need to know and have your say on what the future of rates and services in the Snowy Monaro will look like.

Visit [www.yoursaysnowymonaro.com.au](http://www.yoursaysnowymonaro.com.au) today and complete the short survey to help your councillors understand your preferences.

Survey closes Sunday 22 January 2023 at 11.59pm.

## COMMUNITY SERVICES ADVISORY COMMITTEE

Council is seeking nominations for the Community Services Advisory Committee, comprised of up to eight community representatives, Council staff and a Councillor.

We are seeking suitably qualified people with experience in: financial management, law, having a relative at Yallambee Lodge, having a relative at Snowy River Hostel, or having a relative using Council's Community Support Programs.

The primary role of the Committee is to provide advisory support related to Residential Aged Care and Community Support Programs.

Visit [www.snowymonaro.nsw.gov.au/Council/Section-355-Committees](http://www.snowymonaro.nsw.gov.au/Council/Section-355-Committees) to apply.

## DA APPROVALS: DECEMBER 2022

Development applications, modifications, reviews or complying development certificates have been approved by Snowy Monaro Regional Council in December 2022.

In accordance with Section 4.59 of the Environmental Planning and Assessment Act 1979 notice is given of Council's determination.

The Public is advised that Section 4.59 provides that following this notice a period of three (3) months is allowed for the commencement of legal action as to the validity of the consent or certificate, after which the validity of the consent or certificate cannot be questioned in any legal proceedings.

The applications are available for public inspection, free of charge, at Council offices during ordinary office hour. For applications processed through the Cooma and Jindabyne offices please go to Council's website: [www.snowymonaro.nsw.gov.au/Building-and-Planning/Development/Development-Applications/Approved-DAs](http://www.snowymonaro.nsw.gov.au/Building-and-Planning/Development/Development-Applications/Approved-DAs)

## JOB VACANCIES

Check out our careers portal through the link below to learn more about working with Council.

Listings updated regularly.

[www.snowymonaro.nsw.gov.au/careers](http://www.snowymonaro.nsw.gov.au/careers)

## NOTIFICATION OF ROAD NAME PROPOSALS

Notice is hereby given pursuant to Section 163 of the Roads Act 1993 and Part 7 of the Roads Regulations 2018 of the proposals for the following road names:

Locality	Jindabyne
Name	Sugarloaf Road
Description	A private right-of-carriageway due to subdivision, off Chongs Road, Jindabyne.
Name origin	Road travels through catchment of nearby Sugarloaf Creek.

Locality	Berridale
Names	Higgins Circuit, Hyles Street, and Try Street.
Description	Subdivision at 10 Jindabyne Road, Berridale requires naming three new roads.
Name origin	The proposed names are in commemoration of fallen World War I servicemen from Berridale: Marcus Higgins, Oscar Hyles, and Ernest Christian Try.

These proposed names are open for feedback submissions for twenty-eight (28) days, ending Wednesday 8 February 2023.

Submissions should be made in writing to Chief Executive Officer Peter Bascomb. Email [council@snowymonaro.nsw.gov.au](mailto:council@snowymonaro.nsw.gov.au) or mail PO Box 714, Cooma NSW 2630.

## HAVE YOUR SAY: CONSULTATIONS OPEN FOR COMMUNITY FEEDBACK

Did you know that Council's Your Say page is the easiest way for you to have direct input into important Council initiatives, strategic planning and more?

There are documents for feedback open now at [www.yoursaysnowymonaro.com.au](http://www.yoursaysnowymonaro.com.au) – and we would really like to hear from you.

- **Special Rate Variation**  
*Closes 11.59pm Sunday 22 January 2023*
- **Draft Development Servicing Plans**  
*Closes 11.59pm Monday 30 January 2023*
- **Draft Land Use Strategies and Draft Local Environmental Plan**  
*Closes 11.59pm Monday 6 February 2023*
- **Draft Development Control Plan Amendment 3**  
*Closes 11.59pm Wednesday 8 February 2023*

Head to [www.yoursaysnowymonaro.com.au](http://www.yoursaysnowymonaro.com.au) to have your say today.

## FOGO RULE CHANGES

The NSW Environmental Protection Agency has implemented new rules for Food and Garden Organics (FOGO) bins.

The only waste types permitted in your green-lidded bins are: food, garden organics, and compostible or fibre kitchen caddy liners.

## EVENTS AND ACTIVITIES FOR KIDS OF ALL AGES

There are plenty of activities and events to keep your kids happy, entertained and learning these school holidays thanks to Council's Community Youth team and Snowy Monaro Regional Library.

Events run through to Friday 27 January 2023, with the full schedule available on our website at [www.snowymonaro.nsw.gov.au/events-directory](http://www.snowymonaro.nsw.gov.au/events-directory)

## DRAFT SOUTH EST AND TABLELANDS REGIONAL TRANSPORT PLAN

Transport for NSW (South East Team) has released the Draft South East and Tablelands Regional Transport Plan for public exhibition. The Draft Transport Plan will be open for review and feedback until 24 February 2023.

The Draft Transport Plan outlines the strategic framework for how Transport for NSW will respond to changes in land use, population, and travel demand across the South East Region of NSW over the next 20 years.

It has been developed alongside the NSW Department of Planning and Environment's Draft South East and Tablelands Regional Plan and provides a blueprint to transform how people and goods will travel to, within, and through the South East and Tablelands region in the future.

They invite all residents, community members, business owners and regional stakeholders to provide feedback on the Draft Transport Plan. Your input will help shape the future vision for transport in the region.

To view the draft Transport Plan and to provide feedback or make a submission, please visit their Have Your Say page or contact the Project Team.

Visit <https://yoursay.transport.nsw.gov.au/hys-draft-south-east-and-tablelands-regional-transport-plan> or email [SouthEastTablelandsRTP@transport.nsw.gov.au](mailto:SouthEastTablelandsRTP@transport.nsw.gov.au)

## CALL US 24/7 TO REPORT URGENT PROBLEMS

When you need to contact Council for any urgent matters: whether water, roads, or for any other critical reason – call us on 1300 345 345 – 24 hours a day, seven days a week, 365 days a year.

If you want to report a non-urgent issue only, you can use the free Snap Send Solve app on your smartphone to let us know about it.

## KNOW A LOCAL LEGEND?

Snowy Monaro Regional Council is calling on our community to step up and nominate a deserving local for the 2023 NSW Local Citizen of the Year Awards.

Deadline for nominations has been extended to midday Sunday 15 January 2023.

Visit [www.snowymonaro.nsw.gov.au/Community/Awards-Donations-and-Grants/Australia-Day-Award-Nominations](http://www.snowymonaro.nsw.gov.au/Community/Awards-Donations-and-Grants/Australia-Day-Award-Nominations) to nominate today!

# Council News

Updates | Information | Consultation

## TELL US WHAT YOU THINK ABOUT CHANGES TO RATES

Council is considering a potential increase to rates in the Snowy Monaro.

Visit our Your Say website or visit your nearest Council office to learn all you need to know and have your say on what the future of rates and services in the Snowy Monaro will look like.

Visit [www.yoursaysnowymonaro.com.au](http://www.yoursaysnowymonaro.com.au) today and complete the short survey to help your councillors understand your preferences.

Survey closes Sunday 22 January 2023 at 11.59pm.

## COMMUNITY SERVICES ADVISORY COMMITTEE

Council is seeking nominations for the Community Services Advisory Committee, comprised of up to eight community representatives, Council staff and a Councillor.

We are seeking suitably qualified people with experience in: financial management, law, having a relative at Yallambee Lodge, having a relative at Snowy River Hostel, or having a relative using Council's Community Support Programs.

The primary role of the Committee is to provide advisory support related to Residential Aged Care and Community Support Programs.

Applications close Friday 3 February 2023.

Visit [www.snowymonaro.nsw.gov.au/Council/Section-355-Committees](http://www.snowymonaro.nsw.gov.au/Council/Section-355-Committees) to apply.

## JOB VACANCIES

Check out our careers portal through the link below to learn more about working with Council.

[www.snowymonaro.nsw.gov.au/careers](http://www.snowymonaro.nsw.gov.au/careers)

Listings updated regularly.

Closing Monday 23 January 2023

- Backflow Prevention & Liquid Trade Waste Officer – Full Time – Berridale or Cooma
- Environment On Site Sewerage Management – Full Time – Berridale
- Quarry Operations Officer – Full Time – Flexible Location

Closing Monday 6 February 2023

- Registered Nurse (RN) – Full Time – Cooma



SCAN FOR JOBS

## NOTIFICATION OF ROAD NAME PROPOSALS

Notice is hereby given pursuant to Section 163 of the Roads Act 1993 and Part 7 of the Roads Regulations 2018 of the proposals for the following road names:

Locality	Jindabyne
Name	Sugarloaf Road
Description	A private right-of-carriageway due to subdivision, off Chongs Road, Jindabyne.
Name origin	Road travels through catchment of nearby Sugarloaf Creek.

Locality	Berridale
Names	Higgins Circuit, Hyles Street, and Try Street.
Description	Subdivision at 10 Jindabyne Road, Berridale requires naming three new roads.
Name origin	The proposed names are in commemoration of fallen World War I servicemen from Berridale: Marcus Higgins, Oscar Hyles, and Ernest Christian Try.

These proposed names are open for feedback submissions for twenty-eight (28) days, ending Wednesday 8 February 2023.

Submissions should be made in writing to Chief Executive Officer Peter Bascomb. Email [council@snowymonaro.nsw.gov.au](mailto:council@snowymonaro.nsw.gov.au) or mail PO Box 714, Cooma NSW 2630.

## HAVE YOUR SAY: CONSULTATIONS OPEN FOR COMMUNITY FEEDBACK

Did you know that Council's Your Say page is the easiest way for you to have direct input into important Council initiatives, strategic planning and more?

There are consultations open now for feedback and we would really like to hear from you.

- **Special Rate Variation**  
Closes 11.59pm Sunday 22 January 2023
- **Draft Development Servicing Plans**  
Closes 11.59pm Monday 30 January 2023
- **Draft Development Control Plan Amendment 3**  
Closes 11.59pm Wednesday 8 February 2023
- **Draft Land Use Strategies and Draft Local Environmental Plan**  
Closes 11.59pm Monday 20 February 2023

Head to [www.yoursaysnowymonaro.com.au](http://www.yoursaysnowymonaro.com.au) to have your say today.

## CALL US 24/7 TO REPORT URGENT PROBLEMS

When you need to contact Council for any urgent matters: whether water, roads, or for any other critical reason – call us on 1300 345 345 – 24 hours a day, seven days a week, 365 days a year.

## EVENTS AND ACTIVITIES FOR KIDS OF ALL AGES

School holiday events are running through to Friday 27 January 2023, with the full schedule available on our website.

[www.snowymonaro.nsw.gov.au/events-directory](http://www.snowymonaro.nsw.gov.au/events-directory)

## DRAFT SOUTH EAST AND TABLELANDS REGIONAL TRANSPORT PLAN

Transport for NSW (South East Team) has released the Draft South East and Tablelands Regional Transport Plan for public exhibition. The Draft Transport Plan will be open for review and feedback until 24 February 2023.

The Draft Transport Plan outlines the strategic framework for how Transport for NSW will respond to changes in land use, population, and travel demand across the South East Region of NSW over the next 20 years.

It has been developed alongside the NSW Department of Planning and Environment's Draft South East and Tablelands Regional Plan and provides a blueprint to transform how people and goods will travel to, within, and through the South East and Tablelands region in the future.

They invite all residents, community members, business owners and regional stakeholders to provide feedback on the Draft Transport Plan. Your input will help shape the future vision for transport in the region.

To view the draft Transport Plan and to provide feedback or make a submission, please visit their Have Your Say page or contact the Project Team.

Visit <https://yoursay.transport.nsw.gov.au/hys-draft-south-east-and-tablelands-regional-transport-plan> or email [SouthEastTablelandsRTP@transport.nsw.gov.au](mailto:SouthEastTablelandsRTP@transport.nsw.gov.au)

## NOMINATIONS OPEN FOR YOUTH COUNCIL

Applications for the 2023 Snowy Monaro Youth Council are now open, giving our next generation of leaders the opportunity to make a real difference to their community.

Positions are open to young people between 12 and 24 years old who live in the Snowy Monaro.

Applications close 5pm Friday 4 February 2023.

Visit [www.snowymonaro.nsw.gov.au/Community/Young-People/Snowy-Monaro-Regional-Youth-Council](http://www.snowymonaro.nsw.gov.au/Community/Young-People/Snowy-Monaro-Regional-Youth-Council) to apply today, or learn more about how you can make a difference.

## AUSTRALIA DAY 2023

Respect, reflect and celebrate this Australia Day with events scheduled across the Snowy Monaro.

Bredbo, Cooma and Jindabyne will hold their celebrations on Thursday 26 January 2023, with Bombala to follow on Saturday 28 January 2023.

Other towns and villages event details are being finalised. Visit [www.snowymonaro.nsw.gov.au/Events-directory](http://www.snowymonaro.nsw.gov.au/Events-directory) for all the latest information.





## TELL US WHAT YOU THINK ABOUT CHANGES TO RATES

Council is considering a potential increase to rates in the Snowy Monaro.

Visit our Your Say website or visit your nearest Council office to learn all you need to know and have your say on what the future of rates and services in the Snowy Monaro will look like.

We're holding pop-up stalls and drop-in sessions across the region during this consultation. Come and talk to us face-to-face about rates and ask questions of our experts.

Visit [www.yoursaysnowymonaro.com.au](http://www.yoursaysnowymonaro.com.au) today.

**Survey closes Sunday 22 January 2023 at 11.59pm.**

## CHANGES TO HOURS AT COUNCIL FACILITIES OVER DECEMBER AND JANUARY

There are closures and changes to hours at Council facilities over December 2022 and January 2023. Not all closures and changes have been confirmed, but we will share these as soon as they come to hand.

Visit [www.snowymonaro.nsw.gov.au](http://www.snowymonaro.nsw.gov.au) to see the full list.

Facility	Changes and/or closures
<i>Visitor Centres</i>	
Bombala Visitor Centre	Closed from 1pm Christmas Eve, closed Christmas Day, open as normal all other days.
Cooma Visitor Centre	Closed Christmas Day, open as normal all other days.
<i>Libraries</i>	
Cooma Library	Closed from 12 midday Friday 23 December 2022. Reopens from Tuesday 3 January 2023.
Bombala Library	Closed from 1.30pm Friday 23 December 2022. Reopens from Tuesday 3 January 2023.
Jindabyne Library	Closed from 5pm Thursday 22 December 2022. Reopens from Tuesday 3 January 2023.
Mobile Library	Last day of service Wednesday 21 December 2022. 2023 timetable to be confirmed January 2023.
<i>Landfills and Transfer Stations</i>	
Cooma Landfill	Closed from Christmas Day through Tuesday 27 December 2022. Open Wednesday 28 December through Saturday 31 December. Closed Sunday 1 January and Monday 2 January. Reopen as normal from Tuesday 3 January.
Jindabyne Landfill	
Bombala Landfill	
Adaminaby Transfer Station	Open as normal.
Berridale Transfer Station	Closed Christmas Day and Sunday 1 January 2023.
Bredbo Transfer Station	
Delegate Transfer Station	Closed Tuesday 27 December 2022. Otherwise open as normal.
Nimmitabel Transfer Station	Closed Christmas Day and Sunday 1 January 2023.
Numeralla Transfer Station	Closed Monday 26 December 2022 and Monday 2 January 2023. Otherwise open as normal.
<i>Council Offices</i>	
Berridale Council Office	Closed from 12pm Friday 23 December 2022
Bombala Council Office	Closed from 12pm Friday 23 December 2022
Cooma Council Office	Closed from 12pm Friday 23 December 2022
Jindabyne Council Office	Closed from 12pm Friday 23 December 2022

## DA APPROVALS NOVEMBER 2022

Development applications, modifications, reviews or complying development certificates have been approved by Snowy Monaro Regional Council in November 2022.

In accordance with Section 4.59 of the Environmental Planning and Assessment Act 1979 notice is given of Council's determination.

The Public is advised that Section 4.59 provides that following this notice a period of three (3) months is allowed for the commencement of legal action as to the validity of the consent or certificate,

after which the validity of the consent or certificate cannot be questioned in any legal proceedings.

The applications are available for public inspection, free of charge, at Council offices during ordinary office hour. For applications processed through the Cooma and Jindabyne offices please go to Council's website:

[www.snowymonaro.nsw.gov.au/Building-and-Planning/Development/Development-Applications/Approved-DAs](http://www.snowymonaro.nsw.gov.au/Building-and-Planning/Development/Development-Applications/Approved-DAs)

## HAVE YOUR SAY: CONSULTATIONS OPEN FOR COMMUNITY FEEDBACK

Did you know that Council's Your Say page is the easiest way for you to have direct input into important Council initiatives, strategic planning and more?

There are documents for feedback open now at [www.yoursaysnowymonaro.com.au](http://www.yoursaysnowymonaro.com.au) – and we would really like to hear from you.

- **Financial Statements 2021-22** – feedback form – closes 11.59pm Thursday 22 December 2022

- **Special Rate Variation** – survey – closes 11.59pm Sunday 22 January 2023
- **Draft Development Servicing Plans** – feedback form – closes 11.59pm Monday 30 January 2023
- **Draft Land Use Strategies and Draft Local Environmental Plan** – feedback form – closes 11.59pm Monday 6 February 2023

Head to [www.yoursaysnowymonaro.com.au](http://www.yoursaysnowymonaro.com.au) to have your say today.

## DEVELOPMENT APPLICATION

Snowy Monaro Regional Council has received the following development application:

<b>Property Address</b>	Barry Way JINDABYNE 2627
<b>Legal Description</b>	Lot 1 DP 204602 Ph Clyde
<b>Application No</b>	10.2022.465.1
<b>Development Proposal</b>	Caravan Park (consisting of 137 onsite self contained cabins), Restaurant, Function Centre, Information & Education Facility, Virtual Learn to Ski & Ski Hire, Convenience Shop & Manager's Residence
<b>Applicant</b>	LINKE & LINKE SURVEYS PTY LTD
<b>Consent authority</b>	Snowy Monaro Regional Council

The application and accompanying documents will be on display at Council's offices in Jindabyne and Cooma for twenty-eight (28 days) ending on Wednesday 11 January 2023 (inclusive of the end-of-year excluded public exhibition period from Tuesday 20 December 2022 to Tuesday 10 January 2023).

The application can also be viewed on Council's website or [www.masterview.snowymonaro.nsw.gov.au](http://www.masterview.snowymonaro.nsw.gov.au)

Council is seeking community comment on this proposal. All submissions should be made, in writing, to the Chief Executive Officer Peter Bascomb. All submissions will be treated as a public document. Any person making a submission is required to disclose any reportable political donations or gifts at the time of making the submission. For more information, please contact Council's Development and Planning Department – Jindabyne Office, or view Council's website [www.snowymonaro.nsw.gov.au](http://www.snowymonaro.nsw.gov.au)

## DROP-IN SESSIONS AND POP-UP STALLS: DRAFT LAND USE STRATEGY AND PROPOSED LOCAL ENVIRONMENT PLAN

Our community is invited to drop in or pop by to one of our drop-in sessions or pop-up stalls to talk with our expert teams about the draft Land Use Strategy and proposed Local Environment Plan which are both currently out for public consultation.

Find your nearest in-person stall or session, learn more, or have your say today – visit [www.yoursaysnowymonaro.com.au/draftsnowymonarolep](http://www.yoursaysnowymonaro.com.au/draftsnowymonarolep)

## JOB VACANCIES AT COUNCIL

Check out our careers portal through the link below (or scan QR code) to learn more about working with Council. [www.snowymonaro.nsw.gov.au/careers](http://www.snowymonaro.nsw.gov.au/careers) New listings every week.



- Fulltime – Berridale
  - Trainee Carer, Residential Aged Care – Temporary – Berridale and Cooma
- Closing 11.59pm Monday 19 December 2022**

**Closing 11.59pm Monday 12 December 2022**

- Carer, Residential Aged Care – Fulltime, part-time and casual – Cooma
- Construction Worker Parks and Gardens – Temporary – Cooma
- Construction Worker Road Maintenance

- Float/Heavy Plant Operator – Fulltime – Berridale
- Team Leader Drainage – Fulltime – Cooma
- Team Leader Resident Support – Fulltime – Cooma
- Wellness Support Assistant – Fulltime – Cooma

**Closing 11.59pm Tuesday 3 January 2023**

- Registered Nurse, Residential Aged Care – Fulltime – Berridale and Cooma

## UNSEALED ROAD MAINTENANCE SCHEDULE

Whilst maintenance is scheduled in advance, it is often necessary to alter the program due to the determination of specific roads or unforeseen circumstances. If the maintenance schedule is altered, a revised program will be placed on our website.

Please check out Council's website for the latest schedule:

[www.snowymonaro.nsw.gov.au/Roads-Traffic-Maintenance/Road-Maintenance](http://www.snowymonaro.nsw.gov.au/Roads-Traffic-Maintenance/Road-Maintenance)



## COUNCIL NEWS

### **Why is council proposing a Special Rate Variation?**

Earlier this year, councillors and senior staff commenced a discussion with the community about our financial position and that the council needed to be financially sustainable. The rate increases set by the NSW State Government have not kept pace with cost escalations faced by Council in providing services to our community. We are not alone in this.

Before considering applying for a Special Rate Variation (SRV) ie. a rate rise, Council resolved to undertake a Financial Sustainability Review and this review was completed in November 2022. The Extraordinary Meeting on 24 November 2022 endorsed this review and the independent recommendations.

The Financial Sustainability Review clearly states that, without an increase in rates and the implementation of a number of other recommendations aimed at improving efficiency, we would have no choice but to cut services and allow infrastructure and public facilities to degrade and eventually close.

The independent analysis showed that Council's financial position will deteriorate to an average operating deficit of \$8.5million a year which is not sustainable. The impact of the deficit is that we are unable to invest enough money each year in necessary maintenance and renewal on our roads, parks and gardens, and buildings and these assets will continue to deteriorate. Services and associated service levels will also need to be reduced.

The review also revised our long term financial plan and provided the following three options to be consulted with the community and give the community the opportunity to provide feedback through a survey.

**Option 1 – 53% rate increase to be paid in 2023/24**

**Option 2 – 55.25% rate increase spread over five years starting from 2023/24**

**Option 3 – No SRV, Rate Peg Only**

To complete the survey and review the clear and comprehensive information to inform you, our community, through this process visit:

[www.yoursaysnowymonaro.com.au/special-rate-variation](http://www.yoursaysnowymonaro.com.au/special-rate-variation)



## TELL US WHAT YOU THINK ABOUT CHANGES TO RATES

Council is considering a potential increase to rates in the Snowy Monaro.

Visit our Your Say website or visit your nearest Council office to learn all you need to know and have your say on what the future of rates and services in the Snowy Monaro will look like.

We're holding pop-up stalls and drop-in sessions across the region during this consultation. Come and talk to us face-to-face about rates and ask questions of our experts.

Visit [www.yoursaysnowymonaro.com.au](http://www.yoursaysnowymonaro.com.au) today.

**Survey closes Sunday 22 January 2023 at 11.59pm.**

## HAVE YOUR SAY: CONSULTATIONS OPEN FOR COMMUNITY FEEDBACK

Did you know that Council's Your Say page is the easiest way for you to have direct input into important Council initiatives, strategic planning and more?

There are documents for feedback open now at [www.yoursaysnowymonaro.com.au](http://www.yoursaysnowymonaro.com.au) – and we would really like to hear from you.

- Financial Statements 2021-22** – feedback form – closes 11.59pm Thursday 22 December 2022
- Special Rate Variation** – survey – closes 11.59pm Sunday 22 January 2023
- Draft Development Servicing Plans** – feedback form – closes 11.59pm Monday 30 January 2023
- Draft Land Use Strategies and Draft Local Environmental Plan** – feedback form – closes 11.59pm Monday 6 February 2023

Head to [www.yoursaysnowymonaro.com.au](http://www.yoursaysnowymonaro.com.au) to have your say today.

## UNSEALED ROAD MAINTENANCE SCHEDULE

Whilst maintenance is scheduled in advance, it is often necessary to alter the program due to the determination of specific roads or unforeseen circumstances. If the maintenance schedule is altered, a revised program will be placed on our website.

Please check out Council's website for the latest schedule:

[www.snowymonaro.nsw.gov.au/Roads-Traffic-Maintenance/Road-Maintenance](http://www.snowymonaro.nsw.gov.au/Roads-Traffic-Maintenance/Road-Maintenance)

## PARKS AND GARDEN MAINTENANCE SCHEDULE

The schedule for this week's parks and garden maintenance – from Monday 5 December to Friday 16 December 2022 – is now available on our website.

All works are weather depending.

Visit [www.snowymonaro.nsw.gov.au/Recreation/Parks-and-Garden-Maintenance](http://www.snowymonaro.nsw.gov.au/Recreation/Parks-and-Garden-Maintenance)

## JOB VACANCIES AT COUNCIL

Check out our careers portal through the link below (or scan QR code) to learn more about working with Council.

[www.snowymonaro.nsw.gov.au/careers](http://www.snowymonaro.nsw.gov.au/careers)

New listings every week.



SCAN FOR JOBS

## DEVELOPMENT APPLICATION

Snowy Monaro Regional Council has received the following development application:

Property Address:	Barry Way JINDABYNE 2627
Legal Description:	Lot 1 DP 204602 Ph Clyde
Application No:	10.2022.465.1
Development Proposal:	Caravan Park (consisting of 137 onsite self contained cabins), Restaurant, Function Centre, Information & Education Facility, Virtual Learn to Ski & Ski Hire, Convenience Shop & Manager's Residence
Applicant:	LINKE & LINKE SURVEYS PTY LTD
Consent Authority:	Snowy Monaro Regional Council

The application and accompanying documents will be on display at Council's offices in Jindabyne and Cooma for twenty-eight (28 days) ending on Wednesday 11 January 2023 (inclusive of the end-of-year excluded public exhibition period from Tuesday 20 December 2022 to Tuesday 10 January 2023).

The application can also be viewed on Council's website or <https://masterview.snowymonaro.nsw.gov.au>

Council is seeking community comment on this proposal. All submissions should be made, in writing, to the Chief Executive Officer Peter Bascomb. All submissions will be treated as a public document. Any person making a submission is required to disclose any reportable political donations or gifts at the time of making the submission. For more information, please contact Council's Development and Planning Department – Jindabyne Office, or view Council's website [www.snowymonaro.nsw.gov.au](http://www.snowymonaro.nsw.gov.au)

## CHANGES TO HOURS AT COUNCIL FACILITIES OVER DECEMBER 2022 AND JANUARY 2023

Facility	Changes and/or closures
Visitor Centres	
Bombala Visitor Centre	Closed from 1pm Saturday 24 December 2022, closed Sunday 25 December, open as normal all other days.
Cooma Visitor Centre	Closed Sunday 25 December 2022, otherwise open.
Libraries	
Cooma Library	<b>Ordinary opening days Monday to Saturday.</b> Closed from 12 noon Friday 23 December 2022. Reopens Tuesday 3 January 2023.
Bombala Library	<b>Ordinary opening days Tuesday to Friday.</b> Closed from 1.30pm Friday 23 December 2022. Reopens Tuesday 3 January 2023.
Jindabyne Library	<b>Ordinary opening days Tuesday to Saturday.</b> Closed from 5pm Thursday 22 December 2022. Reopens Tuesday 3 January 2023.
Mobile Library	Last day of service Wednesday 21 December 2022. 2023 timetable to be confirmed January 2023.
Landfills, Transfer Stations and ScrapMarts	
Cooma Landfill	Closed from 25 – 27 December 2022. Open 28 – 31 December 2022. Closed 1 – 2 January 2023. Reopen as normal from Tuesday 3 January 2023.
Jindabyne Landfill	
Bombala Landfill	<b>Ordinary opening days Friday to Monday.</b> Closed from 25 – 27 December 2022. Open 28 – 31 December 2022. Closed 1 – 2 January 2023 then reopen as normal.
Adaminaby Transfer Station	<b>Ordinary opening day Saturday.</b> Open as normal.
Berridale Transfer Station	<b>Ordinary opening day Sunday.</b> Closed Sunday 25 December 2022 and Sunday 1 January 2023. <b>Special opening day Wednesday 28 December from 9am to 1pm for your Christmas rubbish.</b>
Bredbo Transfer Station	<b>Ordinary opening days Friday and Sunday.</b> Closed Sunday 25 December 2022 and Sunday 1 January 2023.
Delegate Transfer Station	<b>Ordinary opening days Tuesday and Saturday.</b> Closed Tuesday 27 December 2022. Otherwise open as normal.
Nimmitabel Transfer Station	<b>Ordinary opening days Wednesday and Sunday.</b> Closed Sunday 25 December 2022 and Sunday 1 January 2023.
Numeralla Transfer Station	<b>Ordinary opening days Monday and Saturday.</b> Closed Monday 26 December 2022 and Monday 2 January 2023. Otherwise open as normal.
Bombala ScrapMart	<b>Ordinary opening days Saturday and Sunday.</b> Closed Sunday 25 December 2022. Open Saturday 31 December. Closed Sunday 1 January 2023. Reopen as normal from Saturday 7 January.
Cooma ScrapMart	<b>Ordinary opening days Thursday to Saturday.</b> Open Thursday 29 December through Saturday 31 December 2022. Reopen as normal from Thursday 5 January 2023.
Jindabyne ScrapMart	<b>Ordinary opening days Saturday and Sunday.</b> Closed Sunday 25 December 2022. Open Saturday 31 December. Closed Sunday 1 January 2023. Reopening as normal from Saturday 7 January.
Pools	
Adaminaby Pool – season opens from Monday 12 December	Closed , Sunday 1 January and Monday 2 January 2023. Open all other days.
Berridale Pool	Closed Sunday 25 December, Monday 26 December 2022, Sunday 1 January and Monday 2 January 2023. Open all other days.
Bombala Pool	Closed Sunday 25 December, Monday 26 December 2022 and Sunday 1 January 2023. Open all other days.
Cooma Pool	Closed Sunday 25 December 2022 only.
Jindabyne Pool	Closed for renovations until further notice.
Community Services	
Berridale Community Services	Closed from 12pm Friday 23 December 2022. Reopen as normal from Monday 9 January 2023.
Bombala Community Services	
Cooma Community Services (Werri-Nina)	
Council Offices	
Berridale Council Office	Offices closed from 12 noon Friday 23 December 2022, reopening 8.30am Tuesday 3 January 2023.
Bombala Council Office	
Cooma Council Office	
Jindabyne Council Office	





## CATCHUP WITH MAYOR DAVIS

### More info on the Special Rate Variation

I'd like to share some more information, available online too, and also thank those members of the community who have completed the survey to date and come out to meet with us at our consultation sessions.

Some of you have asked about the impact of implementing the Special Rate Variation (SRV) on the average rates by rate category:

Proposed options: 2023/24 Average Rates				
Rating Category	2022/23 Rate	Option 1	Option 2	Option 3
Residential	\$980.29	\$1,499.84	\$1,100.38	\$1,019.50
Farmland	\$2,026.30	\$3,100.24	\$2,274.52	\$2,107.35
Business	\$1,071.29	\$1,639.07	\$1,202.52	\$1,114.14
Electricity Generation	\$43,806.17	\$67,023.44	\$49,172.43	\$45,558.42

*At the highest end, for Option 1 residential increase this equates to \$10 a week or two medium coffees equivalent.*

And another common question is what will the revenue raised by the proposed SRV be used for?

It will fund the following council assets:

- Resealing bitumen roads
- Putting gravel back on our unsealed roads
- Improve our stormwater infrastructure
- Replacement of bridges that are failing
- Bringing our community and other buildings back to a good condition
- Investment in asset management capability

Council must report back to the community on how the revenue raised by the SRV has been used in the annual report each year.

### What happens now:

- Consultation is underway with our community – with the survey open until 11.59pm Sunday 22 January 2023. Tell us what balance of an increase to rates and cuts to services you prefer.
- Council meets again to discuss the results of the consultation, and decide whether to apply for an increase to rates.
- If applying, Council makes a formal application to IPART (an expression of interest has already been made).
- IPART will then conduct their own consultation, allowing the community to again have their say on any potential increase to rates.
- By mid-2023, IPART will notify Council of whether a rate increase is approved.
- If approved by council, the Special Rate Variation (increase) is applied to rates from mid-2023.

This process, including the two different consultation periods will take place from now through to June 2023, giving our community the time

they need to make an informed decision and tell us what they think, and which way we go together.

Council has prepared clear, simple and comprehensive information to inform you, our community, through this process.

Visit [www.yoursaysnowymonaro.com.au/special-rate-variation](http://www.yoursaysnowymonaro.com.au/special-rate-variation) to find out all you need to know and to have your say on this important project to secure our region's future.







## TELL US WHAT YOU THINK ABOUT CHANGES TO RATES

Council is considering a potential increase to rates in the Snowy Monaro.

Visit our Your Say website or visit your nearest Council office to learn all you need to know and have your say on what the future of rates and services in the Snowy Monaro will look like.

Visit [www.yoursaysnowymonaro.com.au](http://www.yoursaysnowymonaro.com.au) today and complete the short survey to help your councillors understand your preferences.

**Survey closes Sunday 22 January 2023 at 11.59pm.**

## CLOSURES AND CHANGED HOURS AT COUNCIL FACILITIES IN JANUARY

All our facilities and services are back up and running as normal, with four exceptions:

- Mobile Library – 2023 timetable to be confirmed this month
- Jindabyne Pool – Closed for renovations until further notice
- Community services (Berridale, Bombala and Cooma) – Reopening as normal from Monday 9 January 2023
- Cooma ScrapMart – Reopening as normal from Thursday 12 January 2023

## HAVE YOUR SAY: CONSULTATIONS OPEN FOR COMMUNITY FEEDBACK

Did you know that Council's Your Say page is the easiest way for you to have direct input into important Council initiatives, strategic planning and more?

There are documents for feedback open now at [www.yoursaysnowymonaro.com.au](http://www.yoursaysnowymonaro.com.au) – and we would really like to hear from you.

- **Special Rate Variation** – closes 11.59pm Sunday 22 January 2023
- **Draft Development Servicing Plans** – closes 11.59pm Monday 30 January 2023
- **Draft Land Use Strategies and Draft Local Environmental Plan** – closes 11.59pm Monday 6 February 2023

Head to [www.yoursaysnowymonaro.com.au](http://www.yoursaysnowymonaro.com.au) to have your say today.

## DEVELOPMENT APPLICATION

Snowy Monaro Regional Council has received the following development application:

Property Address:	Barry Way JINDABYNE 2627
Legal Description:	Lot 1 DP 204602 Ph Clyde
Application No:	10.2022.465.1
Development Proposal:	Caravan Park (consisting of 137 onsite self contained cabins), Restaurant, Function Centre, Information & Education Facility, Virtual Learn to Ski & Ski Hire, Convenience Shop & Manager's Residence
Applicant:	LINKE & LINKE SURVEYS PTY LTD
Consent Authority:	Snowy Monaro Regional Council

The application and accompanying documents will be on display at Council's offices in Jindabyne and Cooma for twenty-eight (28 days) ending on Wednesday 11 January 2023 (inclusive of the end-of-year excluded public exhibition period from Tuesday 20 December 2022 to Tuesday 10 January 2023).

The application can also be viewed on Council's website or [www.masterview.snowymonaro.nsw.gov.au](http://www.masterview.snowymonaro.nsw.gov.au)

Council is seeking community comment on this proposal. All submissions should be made, in writing, to the Chief Executive Officer Peter Bascomb. All submissions will be treated as a public document. Any person making a submission is required to disclose any reportable political donations or gifts at the time of making the submission. For more information, please contact Council's Development and Planning Department – Jindabyne Office, or view Council's website [www.snowymonaro.nsw.gov.au](http://www.snowymonaro.nsw.gov.au)

## JOIN THE COMMUNITY SERVICES ADVISORY COMMITTEE

Council is seeking nominations for the Community Services Advisory Committee, comprised of up to eight community representatives, Council staff and a Councillor.

We are seeking suitably qualified people with experience in: financial management, law, having a relative at Yallambee Lodge, having a relative at Snowy River Hostel, and having a relative using Council's Community Support Programs.

The primary role of the Committee is to provide advisory support related to Residential Aged Care and Community Support Programs.

Visit [www.snowymonaro.nsw.gov.au/News-and-Media/News-articles/Community-Services-Advisory-Committee-seeking-nominations](http://www.snowymonaro.nsw.gov.au/News-and-Media/News-articles/Community-Services-Advisory-Committee-seeking-nominations) for more information.

## UNSEALED ROAD MAINTENANCE SCHEDULE

Whilst maintenance is scheduled in advance, it is often necessary to alter the program due to the determination of specific roads or unforeseen circumstances. If the maintenance schedule is altered, a revised program will be placed on our website.

Please check out Council's website for the latest schedule:

[www.snowymonaro.nsw.gov.au/Roads-Traffic-Maintenance/Road-Maintenance](http://www.snowymonaro.nsw.gov.au/Roads-Traffic-Maintenance/Road-Maintenance)

## CALL US 24/7 TO REPORT URGENT PROBLEMS

When you need to contact Council for any urgent matters: whether water, roads, or for any other critical reason - call us on 1300 345 345 24 hours a day, seven days a week, 365 days a year.

If you want to report a non-urgent issue only, you can use the free Snap Send Solve app on your smartphone to let us know about it.

For more information, contact Council on 1300 345 345 or at [council@snowymonaro.nsw.gov.au](mailto:council@snowymonaro.nsw.gov.au)

## PARKS AND GARDEN MAINTENANCE SCHEDULE

The schedule for parks and garden maintenance is now available on our website.

All works are weather depending.

Visit [www.snowymonaro.nsw.gov.au/Recreation/Parks-and-Garden-Maintenance](http://www.snowymonaro.nsw.gov.au/Recreation/Parks-and-Garden-Maintenance)

## JOB VACANCIES AT COUNCIL

Check out our careers portal through the link below (or scan QR code) to learn more about working with Council.

[www.snowymonaro.nsw.gov.au/careers](http://www.snowymonaro.nsw.gov.au/careers)

**New listings every week.**



SCAN FOR JOBS

## NSW LOCAL CITIZEN OF THE YEAR AWARDS

Snowy Monaro Regional Council is calling on our community to step up and nominate a deserving local for the 2023 NSW Local Citizen of the Year Awards.

Always a highlight of the yearly Australia Day program across the state, the NSW Local Citizen of the Year Awards recognise the contributions of local legends, heroes and quiet achievers of all kinds.

Each year, Snowy Monaro Australia Day committees from Bombala, Cooma and Jindabyne register for the program.

**The award categories this year are:**

- Citizen of the Year (19 & older)
- Young Citizen of the Year (18 & younger)
- Special Achievement of the Year
- Sportsperson of the Year (19 & older)
- Young Sportsperson of the Year (18 & younger)
- Community Event of the Year
- Community Group of the Year
- Arts and Cultural Person of the Year
- Emergency Services Worker of the Year
- Business of the Year (new or existing)
- Environmental Award (individual or group, open aged)
- Young Environmental Citizen of the Year (school aged)

**Nominations close at midday Saturday 7 January 2023.**

Visit [www.snowymonaro.nsw.gov.au/Community/Awards-Donations-and-Grants/Australia-Day-Award-Nominations](http://www.snowymonaro.nsw.gov.au/Community/Awards-Donations-and-Grants/Australia-Day-Award-Nominations) and complete your nomination today.

## LAST SCHOOL HOLIDAY EVENTS

From LEGO® sessions to story time, with science and craft and movies and more, there's something for every kind of kid and every kind of age at your local library this summer.

It's all free-of-charge and many sessions don't even need an RSVP.

To see the full list of events and sessions head to [www.snowymonaro.nsw.gov.au/Events-directory](http://www.snowymonaro.nsw.gov.au/Events-directory) for all the details.

## COOMA: FOGO RULES HAVE CHANGED

The NSW Environmental Protection Agency has implemented new rules for your Food and Garden Organics (FOGO) bins.

The only things that can go into your FOGO bin are:

- Food
- Garden organics
- Compostable plastic kitchen caddy liners that comply with Australian Standard AS 4736-2006 (for commercial composting) used to collect and transfer food waste to the FOGO bin
- Fibre-based kitchen caddy liners (e.g. paper or newspaper) used to collect and transfer food waste to the FOGO bin.

For more information, please visit [www.epa.nsw.gov.au/your-environment/recycling-and-reuse/household-recycling-overview/fogo-information-for-households](http://www.epa.nsw.gov.au/your-environment/recycling-and-reuse/household-recycling-overview/fogo-information-for-households)



## Share your opinion on these important consultations today.



SNOWY MONARO  
REGIONAL COUNCIL

- **Special Rate Variation:** Council is considering whether or not to increase rates. There are three options for you to consider in our short online survey. **Closes 11.59pm Sunday 22 January 2023.**
- **Draft Development Servicing Plans:** These plans set out how much developers pay towards the cost of providing services to their developments. New guidelines mean these plans must be updated. **Closes 11.59pm Monday 30 January 2023.**
- **Draft Land Use Strategies and draft Local Environmental Plan:** Council needs to harmonise, review and update our land use strategies and local environment plans. **Closes 11.59pm Monday 20 February 2023.**

**Help shape the future of our region.** Visit [yoursaysnowymonaro.com.au](https://yoursaysnowymonaro.com.au) today!





## | Current consultations open for feedback

- **Special Rate Variation:** Council is considering whether or not to increase rates. There are three options for you to consider in our short online survey. **Closes 11.59pm Sunday 22 January 2023.**
- **Draft Development Servicing Plans:** These plans set out how much developers pay towards the cost of providing services to their developments. New guidelines mean these plans must be updated. **Closes 11.59pm Monday 30 January 2023.**
- **Draft Development Control Plan (DCP) Amendment 3 - Three Rivers Estate:** Council needs to amend the Snowy River DCP to provide additional site-specific controls to the land which forms part of Kalkite's Three Rivers Estate development. **Closes 11.59pm Wednesday 8 February 2023.**
- **Draft Land Use Strategies and draft Local Environmental Plan:** Council needs to harmonise, review and update our land use strategies and local environment plans. **Closes 11.59pm Monday 20 February 2023.**

**Help shape the future of our region.** Visit [yoursaysnowymonaro.com.au](https://yoursaysnowymonaro.com.au) today!







SNOWY MONARO  
REGIONAL COUNCIL

## What do you want the future of the Snowy Monaro to look like?

An independent financial sustainability review showed that Council either needs to increase the amount of money we bring in through rates, or drastically cut spending on services, infrastructure, maintenance and facilities.

Tell us if you want rates to go up, or not.

*Scan the QR code or head to the link below to see the options.*

Visit [www.yoursaysnowymonaro.com.au](http://www.yoursaysnowymonaro.com.au) to have your say or to learn more.



# Media Release

## Friday 25 November 2022

### Summary of Extraordinary Council Meeting: Thursday 24 November 2022 – Cooma

#### **Presentations were made by two members of the public:**

1. Mick Newman – 8.2.1 Financial Sustainability Review
2. Andrew Thaler – Special Rate Variation

#### **Discussed at the meeting were:**

#### **8.1 Finance**

##### **8.1.1 2022 Financial Statements to be signed**

That Council

A. Authorise the Mayor and a Deputy Mayor to sign the Statement by Councillors and Management for the Snowy Monaro Regional Council 2022 General Purpose Financial Statements

B. Authorise the Mayor and a Deputy Mayor to sign the Statement by Councillors and Management for the Snowy Monaro Regional Council 2022 Special Purpose Financial Statements for the following business activities: · Water Supply · Sewerage · Waste Management · Residential Aged Care

Moved Cr Mitchell, seconded Cr Summers

Passed: against were Cr Stewart, Williamson, Frolich

#### **8.2 Executive Office**

##### **8.2.1 Financial Sustainability Review**

That Council

A. Adopt the following policy positions:

- (a) That no new or increased services or infrastructure be taken on without a full business case being in place that includes at a minimum:
  - i. A comprehensive assessment of the benefits of the proposal
  - ii. Assessment of the capacity of the organisation to provide and manage the service and associated assets
  - iii. A full assessment of the lifecycle costs of the service or asset
  - iv. Identified guaranteed funding for the full lifecycle costs
- (b) That where possible Council's budget be developed on an activity-based approach
- (c) Council should budget for and maintain an unconstrained cash reserve of at least \$5.0 million

- (d) Council shall not agree to undertake projects unless they are and have followed the Council's project management framework
- (e) Grant applications that have a negative impact on the financial position of the council must be approved by Council. Where there is insufficient time to do this they may be approved by agreement between the Mayor and CEO

B. Provide notification to IPART that Council intends to lodge an application for a special rate variation.

C. That the focus of the funds raised from the Special Rate Variation (SRV) be:

- (a) The sealed road network, with a focus on interventions to reduce the lifecycle costs of the assets and to provide the maximum benefit to the broader community
- (b) The unsealed road network, with a focus on restoring the gravel wearing courses to provide the maximum benefits to the broader community
- (c) To raise the level of maintenance/renewal funding for buildings and other infrastructure to the appropriate level to begin a program of restoration
- (d) A project to review opportunities to rationalise the land and facilities assets that are used to deliver Council's services, including the rationalisation of the number of locations services are provided, considering a regional approach to service delivery rather than service in each location

D. Adopt a target of \$1million in efficiency savings to be found over the next four years.

E. Commence the following projects through the project management framework:

- (a) Lobbying for changes to the rate peg to incorporate the cost of growth assets from the Snowy Mountains Special Activation Precinct (SAP) works
- (b) Establishing the level of community service obligations for the services Council provides and using these as the basis for determining the appropriate level of user charges against subsidy to users of services
- (c) Explore options to rationalise the land and facilities assets
- (d) Implementing efficiency improvement initiatives previously identified, including the recommendations from the Works Management, Field Operations and Contract Delivery Service Reviews
- (e) Implement the asset management improvements identified in the financial sustainability review
- (f) Prepare a pavement management system
- (g) Develop and implement an economic development and investment attraction strategy that targets realisation of benefits from major regional developments and supply chains (eg. SAP) to the whole of region Council area

F. Add the following tasks to the 2022-23 Operational Plan:

- (a) Have a framework in place to ensure the impacts of grants on the financial sustainability of the Council are considered before any applications are lodged with the due date being 30 June 2023
- (b) Review the internally restricted cash to ensure alignment with intended purpose of the reserves and that the reserves are adequate for the purpose, to be completed by 31 May 2023.
- (c) Implement a monthly reconciliation and reporting process for all external restrictions by 30 June 2023
- (d) Approach group 4 and 11 councils, as well as the member of the CRJO, to gauge interest in performance benchmarking by 30 June 2023
- (e) Commence development of a strategic service planning framework to guide and inform the development of the Delivery Program and Resourcing Strategies by 30 June 2023

Moved Cr Summers, seconded Cr Mitchell

Passed: against were Cr Stewart, Williamson, Frolich

**Subsequent to the meeting, the CEO received a rescission motion and requests for an extraordinary meeting to consider the rescission motion. The extraordinary meeting is now scheduled for 5pm Tuesday 29 November 2022.**

### **8.3 Strategy**

#### **8.3.1 Revised Resourcing Strategy Documents**

That Council

- A. Place the attached documents on public exhibition as part of the process of applying for a special rate variation.
- B. Schedule an Extraordinary Meeting for 1pm Monday 30 January 2023 to be held in the Cooma Council Chamber.

Moved Cr Summers, seconded Cr Mitchell

*Amendments made to date above for meeting and community consultation close date on page 195 to 6 January 2023.*

Procedural motion lost: against were Cr Stewart, Williamson, Frolich, Hanna, Hopkins, Johnson

Debate resumed and concluded.

Motion was passed: Cr Frolich and Williamson against.

#### **8.3.2 Updated Long Term Financial Plan and Asset Management Strategy**

- A. That the updates be noted.

Moved Cr Summers, seconded Cr Mitchell

Passed: against Cr Frolich, Cr Williamson refused to vote and Cr Stewart formally abstained

---

#### Media Contact

Communications Team – 1300 345 345 – [communications@snowymonaro.nsw.gov.au](mailto:communications@snowymonaro.nsw.gov.au)

Goto [www.snowymonaro.nsw.gov.au](http://www.snowymonaro.nsw.gov.au) or follow Council's Facebook page.



# Media Release

Wednesday 30 November 2022

## Councillors vote to begin formal Special Rate Variation process for Snowy Monaro

Snowy Monaro Regional Council will begin consultation with the community on a potential rate increase following an Extraordinary Council Meeting in Cooma yesterday evening.

This decision was reached at last week's meeting, however, due to three Councillors lodging a rescission motion after last Thursday's meeting had finished, yesterday's meeting was held to discuss and vote on this matter again.

A majority of Councillors voted to reaffirm the decision made at last Thursday's Extraordinary Council Meeting to notify the Independent Pricing and Regulatory Tribunal (IPART) of Council's intent to apply for a rate increase. This increase is known in government terminology as a Special Rate Variation. The lodged rescission motion was lost.

Council has written to IPART notifying the body of the organisation's intent to apply for a Special Rate Variation.

The decision on the final option to bring Council to a financially sustainable position will be made only after extensive consultation and engagement with the community. The final decision, post consultation, will be made after the Council meeting currently scheduled for 30 January 2022.

Councillors voted to begin this process after the independent financial sustainability review (FSR) into Council's finances showed that, without an increase in rates and the implementation of a number of other recommendations aimed at improving efficiency, we would have no choice but to cut services and allow infrastructure and public facilities to degrade and eventually close.

### What happens now:

- Council reconfirms to IPART– the government authority that makes decisions about rates – our intention to apply for a Special Rate Variation (the formal name for a rate increase)
- Consultation begins – the community will have the opportunity to tell us what balance of an increase to rates and cuts to services they want
- Council meets again to discuss the results of the consultation, and decide whether to apply for an increase to rates
- If applying, Council makes a formal application to IPART
- IPART will then conduct their own consultation, allowing the community to again have their say on any potential increase to rates
- By mid-2023, IPART will notify Council of whether a rate increase is approved
- If approved by council, the Special Rate Variation (increase) is applied to rates from mid-2023

This process, including the two different consultation periods will take place from now through to June 2023, giving our community the time they need to make an informed decision and tell us what they think, and which way we go together.

We have prepared clear, simple and comprehensive information to inform you, our community, through this process. Visit [www.yoursaysnowymonaro.com.au/special-rate-variation](http://www.yoursaysnowymonaro.com.au/special-rate-variation) to find out all you need to know and to have your say on this important project to secure our region's future. For information see link above, call 1300 345 345 or email [council@snowymonaro.nsw.gov.au](mailto:council@snowymonaro.nsw.gov.au)

---

#### Media Contact

Gina Woodward – 1300 345 345 – [communications@snowymonaro.nsw.gov.au](mailto:communications@snowymonaro.nsw.gov.au)

# Media Release

Monday 12 December 2022

## Special Rate Variation: Join us at our face-to-face and online sessions

Consultation on the potential Special Rate Variation (SRV) for Snowy Monaro Regional Council is well underway, with hundreds of community and ratepayer responses already submitted through our Your Say platform.

If you haven't had your say already – please, take a few minutes to complete the survey before Sunday 22 January 2023, it's critically important that we hear from everyone.

**Visit [www.yoursaysnowymonaro.com.au/special-rate-variation](http://www.yoursaysnowymonaro.com.au/special-rate-variation) to play your part in the future of our region.**

If you've got questions, concerns or just want to speak with us – drop in and see us –our expert staff, leadership team and Councillors are on-site across the region at pop-up stalls and drop-in sessions.

There are two SRV-dedicated online information sessions next month:

- Tuesday 10 January 2023 – 5.30pm to 7pm
- Wednesday 18 January 2023 – 7pm to 8.30pm

You can talk to us about the Special Rate Variation at our Draft Land Use Strategies and draft Local Environmental Plan drop-ins and pop-ups:

- Tuesday 13 December 2022 – 6pm to 8pm – Smiths Rd RFS Shed
- Wednesday 14 December 2022 – 11am to 1pm – Cooma Centennial Plaza
- Wednesday 14 December 2022 – 4pm to 6pm – Adaminaby School of Arts

Any potential SRV would affect every ratepayer in the Snowy Monaro and the tenants that rent property from them.

To be sure we're making the right decision – the decision that our community and ratepayers want – we need to hear from you.

There are three options for the future of rates in the Snowy Monaro. **Visit [www.yoursaysnowymonaro.com.au/special-rate-variation](http://www.yoursaysnowymonaro.com.au/special-rate-variation) to learn more and to have your say today.**

For further information call 1300 345 345 or email [council@smrc.nsw.gov.au](mailto:council@smrc.nsw.gov.au)

---

### Media Contact

Gina Woodward, Chief Communications Officer – 0475 787 429 – [gina.woodward@smrc.nsw.gov.au](mailto:gina.woodward@smrc.nsw.gov.au)

# Media Release

Friday 23 December 2022

## Special Rate Variation calculator now available

Ratepayers of the Snowy Monaro can now access an easy-to-use Special Rate Variation (SRV) calculator through the SRV Your Say consultation website – [www.yoursaysnowymonaro.com.au/special-rate-variation](http://www.yoursaysnowymonaro.com.au/special-rate-variation)

This calculator will allow all ratepayers to more easily understand how each of the three SRV scenarios being considered by councillors at end January 2023 would potentially affect them and the rates charged for their property.

Council continues to listen to and respond to feedback throughout this consultation.

This is another example of our commitment to making this process as accessible as possible for our community. In December we have been out in the community with drop-in and pop-up sessions, and have appreciated some constructive discussions with our community members.

In January there will also be two online community information sessions on the SRV:

- Tuesday 10 January 2023 from 5.30 – 7pm  
<https://www.eventbrite.com/e/snowy-monaro-special-rate-variation-information-session-1-tickets-478650716177>
- Wednesday 18 January 2023 from 7pm - 8.30pm  
<https://www.eventbrite.com/e/snowy-monaro-special-rate-variation-information-session-2-tickets-478679692847>

Visit [www.yoursaysnowymonaro.com.au/special-rate-variation](http://www.yoursaysnowymonaro.com.au/special-rate-variation) today to:

- learn more about the SRV consultation and Council's financial situation
- complete the short survey to note your preferences for future rate options to be considered by councillors
- register for an online information session in January 2023
- have your say
- use the rates calculator for Snowy Monaro
- or to download the documents for review

If you have questions or concerns, the Your Say website contains an FAQ (frequently asked questions) section, as well as a question-and-answer section where you can read community questions and Council answers – and ask your own.

**Consultation is open until 11.59pm Sunday 22 January 2023.**

---

### Media Contact

Gina Woodward, Chief Communications Officer – 0475 787 429 – [gina.woodward@smrc.nsw.gov.au](mailto:gina.woodward@smrc.nsw.gov.au)

# Media Release

Friday 23 December 2022

## Special Rate Variation consultation update, Financial Sustainability Review and Council audit information

There have been more than 1042 responses to the potential Special Rate Variation consultation survey since it launched at the end of November 2022. Your council team has been hard at work answering questions from the community as they come through on our Your Say website and to our council records email.

Many questions and a significant proportion of community comments more broadly have been concerned with the Financial Sustainability Review (FSR), why we went with the FSR instead of an audit, and where to access the results of the FSR and other Council financial information and documentation.

### **Audit – annual**

Council is audited every year – independently, which occurs separately from our own internal audit system. An audit is the examination of the financial report of an organisation. The financial report includes a balance sheet, an income statement, a statement of changes in equity, a cash flow statement, and notes comprising a summary of significant accounting policies and other explanatory notes.

This process for Snowy Monaro Regional Council is undertaken by the Audit Office of New South Wales. The outcome of this years' audit can be found in the Council Business Papers from the December 2022 Meeting at:

[www.snowymonaro.nsw.gov.au/Council/Meetings/Business-Papers-and-Minutes-2022](http://www.snowymonaro.nsw.gov.au/Council/Meetings/Business-Papers-and-Minutes-2022)

Auditors cannot predict the future – the audit relates to a specific past accounting period. It does not judge what may happen in the future, and so cannot provide assurance that Council will continue in business indefinitely.

### **Beyond the traditional audit – Financial Sustainability Review**

Councillors voted to engage AEC Group, an independent consultant, to conduct an investigation that went beyond a traditional audit – a Financial Sustainability Review. This review investigated financial information, asset management and council's workforce from pre-merger (three shires) to present day as one regional council.

AEC Group made several observations on finances, asset management and workforce and made several recommendations for improvement. These were adopted by Council at the extraordinary meeting in November 2022, with the full report available at [www.snowymonaro.nsw.gov.au/Council/Meetings/Business-Papers-and-Minutes-2022](http://www.snowymonaro.nsw.gov.au/Council/Meetings/Business-Papers-and-Minutes-2022)

The information in the Financial Sustainability Review is a transparent account of Council operations since merger and the three former Councils in the years immediately prior to the merger.

The independent FSR showed that without an increase in rates and the implementation of identified efficiency improvements, Council would have no choice but to cut services and allow infrastructure and public facilities to degrade and eventually close.

The financial sustainability review has 24 recommendations, a number of those with multiple parts. Most are about making changes to be more efficient.

The problem faced by your council is that the overall amount needed to efficiently provide services is higher than the amount of funds available, so more investment is needed along with careful spending of what is available.

The Financial Sustainability Review has confirmed that there is a long term structural financial issue at Snowy Monaro Regional Council, inherited from the predecessor shires. We have been told that the issues we are facing are the same issues similar councils are facing – that is, we are not unique in the difficulties we face.

We have been told that for a long time the Council has not been investing enough into the community's infrastructure to replace what we are using up, creating a bigger and bigger burden on future generations.

The NSW Auditor General, NSW Office of Local Government and AEC Group have all said there is a significant financial issue and Council needs to start making hard decisions to fix the situation, which is what is being done now through this SRV consultation.

In addition to the FSR and the external and independent audit, the Office of Local Government is also closely monitoring our performance as an organisation.

The spending of any funds raised from a Special Rate Variation (SRV) must be reported in Council's Annual Report each year. This is non-negotiable and the community can have confidence that they will be able to see precisely what we spend any additional money raised through an SRV on.

**SRV funds will be allocated to:**

- Renewal of the sealed and unsealed road network;
- Replacement of aged timber bridges;
- Renewal work on the buildings that have deteriorated over time, and;
- Improving the asset management planning systems.

**The consultation on the potential Special Rate Variation for Snowy Monaro Regional Council is open for your response until 11.59pm Sunday 22 January 2023.**

There is a short survey option and if you would like to make a written submission, please send this to [council@snowymonaro.nsw.gov.au](mailto:council@snowymonaro.nsw.gov.au)

Visit [www.yoursaysnowymonaro.com.au](http://www.yoursaysnowymonaro.com.au) to have your say, ask questions, and learn more about this process and Council's finances more broadly.

---

Media Contact

Gina Woodward, Chief Communications Officer – 0475 787 429 – [gina.woodward@smrc.nsw.gov.au](mailto:gina.woodward@smrc.nsw.gov.au)

# Media Release

Thursday 5 January 2023

## Proposed Special Rate Variation: Register now for online information sessions

Public consultation on the proposed Special Rate Variation for Snowy Monaro Regional Council continues with our upcoming online information sessions. These offer further opportunity for our ratepayers and wider community to learn about the potential options and what they could mean for them.

These sessions will be held on two nights over the next two weeks, rounding out this extended consultation. These final online events are in addition to completed in-person sessions, available online information, ratepayer mailouts, and frequent print and broadcast media activities. All forming part of this diverse community education and consultation process.

### Potential Special Rate Variation online information session dates:

*To register for one of these sessions, please go to our Your Say website to learn more or register using the Eventbrite links below.*

- Tuesday 10 January 2023 – 5.30pm to 7pm  
[www.eventbrite.com/e/snowy-monaro-special-rate-variation-information-session-1-tickets-478650716177](https://www.eventbrite.com/e/snowy-monaro-special-rate-variation-information-session-1-tickets-478650716177)
- Wednesday 18 January 2023 – 7pm to 8.30pm  
[www.eventbrite.com/e/snowy-monaro-special-rate-variation-information-session-2-tickets-478679692847](https://www.eventbrite.com/e/snowy-monaro-special-rate-variation-information-session-2-tickets-478679692847)

**Consultation on the proposed Special Rate Variation closes 11.59pm Sunday 22 January 2023.** Don't wait. Have your say today.

Visit [www.yoursaysnowymonaro.com.au/special-rate-variation](https://www.yoursaysnowymonaro.com.au/special-rate-variation) to share your opinion, and tell us your preference for the future of rates in the Snowy Monaro and find:

- Link to survey to order your preference of the rate options
- Rates calculator
- Background documents including the Financial Sustainability Review (more comprehensive than an audit alone)
- Tables noting impacts of the various rate options
- FAQ including answers to the questions coming in from the community
- Fact sheets

For information, questions or concerns about this consultation please email [council@snowymonaro.nsw.gov.au](mailto:council@snowymonaro.nsw.gov.au) or call 1300 345 345.

---

#### Media Contact

Gina Woodward, Chief Communications Officer – 0475 787 429 – [gina.woodward@smrc.nsw.gov.au](mailto:gina.woodward@smrc.nsw.gov.au)



# Media Release

Monday 23 January 2023

## The Special Rate Variation survey has closed. *What happens now?*

Consultation on the potential Special Rate Variation (SRV) for Snowy Monaro Regional Council closed Sunday 22 January 2023, with Councillors to meet at an Extraordinary Meeting next Monday 30 January 2023 in Cooma to discuss the way forward.

During the community consultation we received 1963 online survey responses along with 126 written submissions, in addition to an extensive question-and-answer section on our Your Say engagement website which we updated as questions were received.

At Monday's meeting, Councillors will discuss the results of the community consultation and decide whether to formally apply for a rate variation – or not – and if so, how much of an increase to apply for.

Councillors can choose not to proceed any further with the SRV and the process ends.

If Councillors vote to support an SRV, Council will notify the Independent Pricing and Regulatory Tribunal (IPART) of this decision. IPART will then review Council's application and assess whether to allow a variation, or not.

The quality of Council's engagement, the capacity of the community to afford the proposed rise, and the financial position of Snowy Monaro Regional Council are some of the factors IPART will consider in coming to their decision.

IPART will conduct their own consultation and engagement with ratepayers and the broader community during this time.

Ultimately, IPART may choose to grant the requested increase percentage, or approve a different amount they deem more appropriate.

If an SRV is approved, Councillors will meet again to decide whether or not to proceed with the approved variation. Councillors can choose to proceed with a lower-than-approved increase or to abandon the SRV altogether.

This is another opportunity for the process to end, following further feedback and deliberation.

Visit [www.yoursaysnowymonaro.com.au/special-rate-variation](http://www.yoursaysnowymonaro.com.au/special-rate-variation) to review documentation, FAQs, and more about the potential Special Rate Variation.

Visit [www.snowymonaro.nsw.gov.au/Council/Meetings](http://www.snowymonaro.nsw.gov.au/Council/Meetings) to tune into Monday's council meeting webcast, or read through the meeting's business paper when released later this week.

**For further information call 1300 345 345 or email [council@smrc.nsw.gov.au](mailto:council@smrc.nsw.gov.au)**

---

### Media Contact

Gina Woodward, Chief Communications Officer – 0475 787 429 – [gina.woodward@smrc.nsw.gov.au](mailto:gina.woodward@smrc.nsw.gov.au)



## Friday 20 January 2023

It's the final few days of the proposed Special Rate Variation (SRV) consultation.

We appreciate that you will have all seen and heard a lot about this consultation over the past few months. Whether the SRV goes ahead or not, the outcome of this process will shape the future of Council and our region well into the future, and it is essential that we do all we can to make sure everyone has a chance to have their say.

If you've taken the time to complete the survey or speak with us about the proposed SRV – thank you.

If you're just glad to not have to hear any more about it – thanks for sticking with us. Remember though, there's still time to have your say and let us know your preference for the future of rates in the Snowy Monaro.

Visit [www.yoursaysnowymonaro.com.au/special-rate-variation](http://www.yoursaysnowymonaro.com.au/special-rate-variation) to have your say **by 11.59pm on Sunday 22 January 2023.**

### IN THIS ISSUE...

- **Draft Development Servicing Plans online information session**
- **Bombala's \$14 million wastewater plant opens**



- **Helping households reduce their landfill waste**
- **Australia Day Events across the region**
- **\$500m Regional and Local Roads Repair Program**
- **Do you have a bushfire survival plan?**



### **DRAFT DEVELOPMENT SERVICING PLANS ONLINE INFORMATION SESSION**

Council is seeking community feedback on our draft Development Servicing Plans, which seek to update and unify the charges property developers contribute towards the infrastructure that serves their developments.

An online information session is scheduled for 5pm to 7pm on Tuesday 7 February 2023, providing an opportunity to learn more and ask questions about the draft plans under consideration.

Visit [www.yoursaysnowymonaro.com.au/draft-development-servicing-plans](http://www.yoursaysnowymonaro.com.au/draft-development-servicing-plans) to register for the session.

**Read more**



### **BOMBALA'S \$14M WASTEWATER PLANT OPENS**

Thanks to funding from the NSW and Commonwealth Governments, Snowy Monaro Regional Council has launched a new wastewater treatment plant in Bombala.

The old Bombala Wastewater Treatment Plant had reached the end of its useful life and required replacement.

Mayor Narelle Davis said the project had been an important upgrade to a vital community facility, supporting local jobs throughout its three-and-a-half-year timeframe.

**Click 'Read more' to read a news story about this exciting new facility.**

[Read more](#)



### **HELPING HOUSEHOLDS REDUCE THEIR LANDFILL WASTE**

Up to half of the waste created every week by almost 290,000 households in NSW will be kept out of landfill thanks to \$6.2 million in funding from the NSW Government.

Minister for Environment James Griffin said 14 more council areas are receiving NSW Government funding to roll out the popular food organics and garden organics (FOGO) collection service, meaning a total of 56 councils in NSW will soon have the service.

Snowy Monaro Regional Council is receiving \$467,575 to fund an expansion of FOGO services in our region. The system is currently being trialled in Cooma.

[Read more](#)



### **AUSTRALIA DAY EVENTS ACROSS THE SNOWY MONARO**

Australia Day is coming up next week on Thursday 26 January 2023.

Click the 'Read more' link below to find out the details of your local community events and get ready to reflect, respect and celebrate what it means for you to be Australian.

---

[Read more](#)



## **\$500M REGIONAL AND LOCAL ROADS REPAIR PROGRAM**

The NSW Government has fast-tracked the opening of applications for the \$500 million Regional and Local Roads Repair Program.

Minister for Metropolitan Roads Natalie Ward said councils across the state can now apply earlier for their slice of \$500 million in NSW Government funding for urgent road repairs.

[Read more](#)



## **DO YOU HAVE A BUSHFIRE SURVIVAL PLAN?**

With summer weather finally making an appearance across the Snowy Monaro (even intermittently), it's time to review or make your bushfire survival plan.

Living in a regional area like our own increases the risks posed by bushfires, and it's critical that you and your family know what to do if disaster strikes.

[Read more](#)

## **CUSTOMER SERVICE HOURS**

**Monday to Friday: 8.30am–4.30pm**

*Payments 8.30am to 4pm only*

- **Cooma** 81 Commissioner Street
- **Berridale** 2 Myack Street
- **Bombala** 71 Caveat Street
- **Jindabyne** 2/1 Gippsland Street

[Contact Details](#)

## **JOIN OUR COUNCIL TEAM**

**New job listings added regularly**

If you've been looking for your next step, something new, or just want an opportunity to work with and for your community, get in touch today.

[Find your next role](#)



✉ Forward

SNOWY MONARO REGIONAL COUNCIL  
Head Office 81 Commissioner Street COOMA NSW 2630  
PO Box 714 COOMA NSW 2630

[Preferences](#) | [Unsubscribe](#)





## Thursday 5 January 2023

Happy New Year! It's our first newsletter for 2023 and we have plenty of exciting news about what we're up to and what's on the cards for Council this year.

We'd like to give a big shoutout to the more than 1300 people that have shared their thoughts on the proposed Special Rate Variation to date. This is a very important subject so no matter what your connection to the Snowy Monaro, no matter which option of the three goes ahead, this will affect you.

Visit [www.yoursaysnowymonaro.com.au/special-rate-variation](http://www.yoursaysnowymonaro.com.au/special-rate-variation) to have your say **by 11.59pm on Sunday 22 January 2023. Link to our quick survey here too.**

### IN THIS ISSUE...

- **Proposed Special Rate Variation: Register for online sessions**
- **Weed of the Week: Bridal Veil Creeper**
- **Online sessions: draft Land Use Strategies and Local Environment Plans**
- **Return of youth school holiday events this January**
- **Draft South East and Tablelands Regional Transport Plan**
- **Services Australia Mobile Service Centre coming to Snowy Monaro**



### **PROPOSED SPECIAL RATE VARIATION: REGISTER FOR ONLINE SESSIONS**

Public consultation on the proposed Special Rate Variation for Snowy Monaro Regional Council continues with our upcoming online information sessions. These offer further opportunity for our ratepayers and wider community to learn about the potential options and what they could mean for them.

These sessions will be held on two nights over the next two weeks, rounding out this extended consultation period. These final online events are in addition to completed in-person sessions, available online information, ratepayer mailouts, and frequent print and broadcast media activities. These all form part of this diverse community education and consultation process across the region.

**Consultation on the proposed [Special Rate Variation](#) closes 11.59pm Sunday 22 January 2023.** Don't wait. Have your say today and fill out the survey.

[Read more](#)





### **WEED OF THE WEEK: BRIDAL VEIL CREEPER**

This week we're talking about Bridal Veil Creeper – a growing threat to our pristine natural environment and native species.

Bridal Veil Creeper (*Asparagus declinatus*) is a small fern-like weed that grows quickly, densely and across a wide array of soils and environments. It is Prohibited Matter in NSW and must be reported immediately. It is prohibited from being sold, traded or possessed by anyone for any reason.

The risk posed by this weed is to our natural environment as it outcompetes native seedlings, ground cover and shrubs – smothering native plant life.

**IMAGE:** Gigi Laidler, CC BY-NC. Sourced from iNaturalist.

[Read more](#)



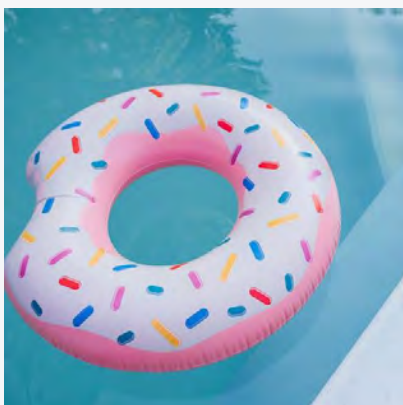
## ONLINE SESSIONS TO LEARN MORE ABOUT PROPOSED CHANGES TO LAND USE STRATEGIES AND LOCAL ENVIRONMENT PLANS

Council's consultation on draft Land Use Strategies and draft Local Environment Plan closes Monday 20 February 2023. We are hosting two online live sessions to help you learn more about the proposed changes and how they will affect you. Register through Eventbrite using [this link](#) and choose a night.

- **Session One** – Thursday 12 January 2023 – 6pm to 7pm
- **Session Two** – Wednesday 18 January 2023 – 6pm to 7pm

Join us for a comprehensive and easy-to-understand presentation explaining how planning and land use currently work in the Snowy Monaro, why things need to change, and why these are the proposed changes.

[Read more](#)



## RETURN OF YOUTH SCHOOL HOLIDAY EVENTS THIS JANUARY

There's even more for the kids to do these school holidays in the Snowy Monaro with Council's recent release of the January youth school holiday event calendar for 2023. Keep your 12 to 18 year olds active, entertained and occupied with movies, skate sessions, free pool access and more.

---

[Read more](#)



## DRAFT SOUTH EAST AND TABLELANDS REGIONAL TRANSPORT PLAN

Transport for NSW (South East Team) has released the [Draft South East and Tablelands Regional Transport Plan](#) for public exhibition. The draft Transport Plan will be open for review and feedback until 24 February 2023.

[Read more](#)



## SERVICES AUSTRALIA MOBILE SERVICE CENTRE COMING TO SNOWY MONARO

Visit the Mobile Service Centre to find out about Australian Government payments, myGov, and services for rural families, older Australians, students, job seekers, people with disability, carers, farmers, self-employed people, plus info on Department of Veterans' Affairs support services.

From 9am - 4pm on:

Adaminaby: Tuesday 24 January @ Big Trout

Berridale: Friday 27 January @ Highdale Carpark

Jindabyne: Wednesday 25 January @ Town Centre

Bombala: 10am - 4pm Monday 30 January near Club Bombala on Maybe St.

[www.servicesaustralia.gov.au/mobile-service-centres](http://www.servicesaustralia.gov.au/mobile-service-centres)

## CUSTOMER SERVICE HOURS

**Monday to Friday: 8.30am-4.30pm**

*Payments 8.30am to 4pm only*

- **Cooma** 81 Commissioner Street
- **Berridale** 2 Myack Street
- **Bombala** 71 Caveat Street
- **Jindabyne** 2/1 Gippsland Street

## JOIN OUR COUNCIL TEAM

**New job listings added regularly**

If you've been looking for your next step, something new, or just want an opportunity to work with and for your community, get in touch today.

[Contact Details](#)

[Find your next role](#)



 [Forward](#)

SNOWY MONARO REGIONAL COUNCIL  
Head Office 81 Commissioner Street COOMA NSW 2630  
PO Box 714 COOMA NSW 2630

[Preferences](#) | [Unsubscribe](#)





## Friday 23 December 2022

Welcome to our final newsletter for 2022. If you're taking time off to relax or celebrate over the end of the year, we hope you have a safe and happy break.

To date, we've had more than 1000 surveys completed in our consultation on the potential Special Rate Variation for Snowy Monaro Regional Council. To those of you that have taken the time to have your say already – thank you.

If you haven't yet participated, there's still time and we have to stress again just how important this consultation is for the future of our region.

We have prepared three options for what rates could look like into the future, and it's up to each of you – our community – to tell us which options you prefer.

Visit [www.yoursaysnowymonaro.com.au/special-rate-variation](http://www.yoursaysnowymonaro.com.au/special-rate-variation) to have your say **by 11.59pm on Sunday 22 January 2023.**

### IN THIS ISSUE...

- **Special Rate Variation consultation update, FSR, and audit info**
- **Do you know a local legend? Nominate them now!**
- **Summary of December 2022 Ordinary Council Meeting**

- **Weed of the Week: Broomrapes**
- **Applications open for the next generation of leaders**
- **Special Rate Variation calculator now available**



### **SPECIAL RATE VARIATION CONSULTATION UPDATE, FSR, AND AUDIT INFO**

There have been more than 1042 responses to the potential Special Rate Variation consultation survey since it launched at the end of November 2022. Your council team has been hard at work answering questions from the community as they come through on our Your Say website and to our Council records email.

Many questions and a significant proportion of community comments more broadly have been concerned with the Financial Sustainability Review (FSR), why we went with the FSR instead of an audit, and where to access the results of the FSR and other Council financial information and documentation.

[\*\*Read more\*\*](#)





### **DO YOU KNOW A LOCAL LEGEND? NOMINATE THEM NOW!**

Snowy Monaro Regional Council is calling on our community to step up and nominate a deserving local for the 2023 NSW Local Citizen of the Year Awards.

Always a highlight of the yearly Australia Day program across the state, the NSW Local Citizen of the Year Awards recognise the contributions of local legends, heroes and quiet achievers of all kinds.

Rural and regional communities like ours show community-mindedness, selflessness, and heroism in times of need and crisis. Our community plays a big part in making the place we call home a great place to live and work.

[Read more](#)



## SUMMARY OF DECEMBER ORDINARY COUNCIL MEETING

The December Ordinary Meeting of Snowy Monaro Regional Council was held on Thursday 15 December 2022 in Cooma. As the last meeting for 2022 there was a packed agenda, a presentation from the Office of the Auditor General, and several speakers at the public forum. Some issues discussed included:

- 8.1 Development Application 10.2022.154.1 - Thirty Four (34) Lot Subdivision
- 9.1.2 Residential aged care update on divestment process and budget requirement for remainder of financial year
- 9.3.3 Public exhibition of draft SMRC Reconciliation Action Plan - Reflect - 2023-2024
- 9.4.2 Post-Exhibition Report - Community Engagement Strategy
- 12.1 Financial Support for Currawarna Assisted Living

These are only a fraction of the matters discussed, but were particularly robust debates or have attracted significant community attention.

To access [the business paper and attachments](#), [watch a recording of the meeting](#), or [read through the minutes](#) - please click the relevant hyperlinked text. **For the full summary, click the read more link below.**

[Read more](#)

**WEED OF THE WEEK: BROOMRAPES**



Broomrapes (*Orobanche* species) are a group of plants that parasitise a wide range of crops and other broadleaf plant species. Of these, Branched Broomrape poses the greatest risk to Australian crops. Due to the significant risk they pose, Broomrapes are classified prohibited matter in NSW and regulated under the *Biosecurity Act 2015*.

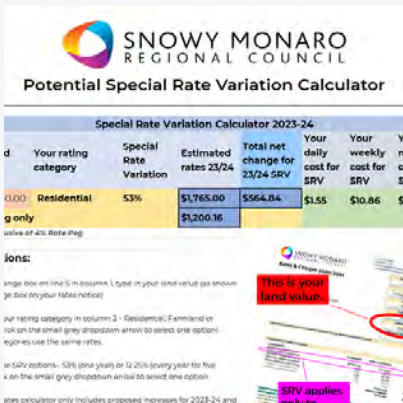
[Read more](#)



## APPLICATIONS OPEN FOR THE NEXT GENERATION OF LEADERS

Applications for the 2023 Snowy Monaro Youth Council are now open, giving our next generation of leaders the opportunity to make a real difference to their community. Open to any young person between 12 and 24 years who lives in the Snowy Monaro region.

[Read more](#)



## SPECIAL RATE VARIATION CALCULATOR NOW AVAILABLE

Ratepayers of the Snowy Monaro can now access an easy-to-use Special Rate Variation (SRV) calculator through the SRV Your Say consultation website.

This calculator will allow all ratepayers to more easily understand how each of the three SRV scenarios being considered by councillors at end January 2023 would potentially affect them and the rates charged for their property.

[Read more](#)

## CUSTOMER SERVICE HOURS

**Council offices will be closed from midday Friday 23 December 2022, reopening as normal from Tuesday 3 January 2023.**

See all the closures at the link below.

[Closures at Council facilities](#)

## JOIN OUR COUNCIL TEAM

We have new job listings every week.

If you've been looking for your next step, something new, or just want an opportunity to work with and for your community, get in touch today!

[Click here for your next role](#)



**SNOWY MONARO**  
REGIONAL COUNCIL

 [Forward](#)

SNOWY MONARO REGIONAL COUNCIL  
Head Office 81 Commissioner Street COOMA NSW 2630  
PO Box 714 COOMA NSW 2630

[Preferences](#) | [Unsubscribe](#)





SNOWY MONARO  
REGIONAL COUNCIL

# Council News

Updates | Information | Consultation

## Friday 9 December 2022

As you've no doubt heard by now, Councillors have voted to begin the formal Special Rate Variation process, including consideration of community feedback.

We have prepared three options for what rates will look like into the future, and it's up to each of you – our community – to tell us which options you prefer.

Visit [www.yoursaysnowymonaro.com.au/special-rate-variation](http://www.yoursaysnowymonaro.com.au/special-rate-variation) to have your say **by 11.59pm on Sunday 22 January 2023.**

### IN THIS ISSUE...

- **Closures and changed hours at Council facilities over festive period**
- **Councillors vote to begin formal Special Rate Variation process**
- **Weed of the Week: Spotted Knapweed**
- **Council's 2021-22 Financial Statements and Annual Report**
- **\$912k in funding for Snowy Monaro pothole repair**
- **Success for Fixing Country Bridges funding round**



### **CLOSURES AND CHANGED HOURS AT COUNCIL FACILITIES**

Over December 2022 and January 2023 there will be closures and changes to opening hours across Council facilities.

Help, service and information will still be available during this time on our 24/7 phone line – if you need to reach us, call 1300 345 345 anytime.

Click the 'read more' link below to view the full list.

[Read more](#)





## COUNCILLORS VOTE TO BEGIN FORMAL SPECIAL RATE VARIATION PROCESS FOR SNOWY MONARO

Snowy Monaro Regional Council is undertaking community consultation on changes to rates, and a potential special rate variation increase, following an Extraordinary Council Meeting in Cooma last week on Tuesday 29 December.

This decision was reached at the Thursday 24 November 2022 Extraordinary Council Meeting, however, due to three Councillors lodging a rescission motion after the meeting had finished, last week's meeting was held to discuss and vote on this matter again.

A majority of Councillors voted to reaffirm the decision to notify the Independent Pricing and Regulatory Tribunal (IPART) of Council's intent to apply for a rate increase. This increase is known in government terminology as a Special Rate Variation. Please read on and fill in the [quick online survey](#) too.

[Read more](#)



## WEED OF THE WEEK: SPOTTED KNAPWEED

**Spotted Knapweed** (*Centaurea stoebe* subsp. *micranthos*) is an invasive and allelopathic perennial weed and is Prohibited Matter in NSW.

This weed grows to a height of approx. 1m tall, with thin hair branches and produces bright pink-purple flowers in warmer months. It resembles a thistle

but without the sharp spines on the leaves. Spotted Knapweed has become a common weed in much of North America, causing significant economic, environmental and agricultural damage.

[Read more](#)



## **COUNCIL'S 2021-22 FINANCIAL STATEMENTS AND ANNUAL REPORT**

Copies of Council's 2021-22 Financial Statements and Annual Report are now available on our website, Your Say Snowy Monaro website and hard copies can be viewed at any Council office.

The Annual Report is an overview of operations, activities and major projects undertaken for the period 1 July 2021 to 30 June 2022.

[Read more](#)



## **\$912K IN FUNDING FOR SNOWY MONARO POTHOLE REPAIR**

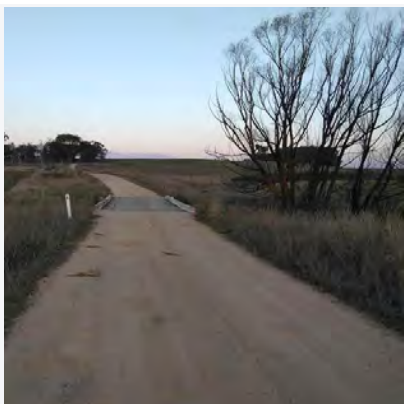
This week Council accepted \$912,398.20 of funding from Transport for NSW and the NSW Government Fixing Local Roads Pothole Repair program.

This program supplements existing funding and supports additional efforts by Council in the short-term repair of priority potholes and road repairs on local and regional roads.

[Read more](#)

## **SUCCESS FOR FIXING COUNTRY BRIDGES FUNDING ROUND**

Council is pleased to announce that Transport for NSW has confirmed we have been successful in obtaining \$4,920,872 funding under Fixing Country



Bridges round 2B.

[Read more](#)

## CUSTOMER SERVICE HOURS

**Monday to Friday: 8.30am-4.30pm**

*Payments 8.30am to 4pm only*

- **Cooma** 81 Commissioner Street
- **Berridale** 2 Myack Street
- **Bombala** 71 Caveat Street
- **Jindabyne** 2/1 Gippsland Street

[Contact details](#)

## JOIN OUR COUNCIL TEAM

We have new job listings every week.

If you've been looking for your next step, something new, or just want an opportunity to work with and for your community, get in touch today!

[Click here for your next role](#)



**SNOWY MONARO**  
REGIONAL COUNCIL

[✉ Forward](#)

SNOWY MONARO REGIONAL COUNCIL  
Head Office 81 Commissioner Street COOMA NSW 2630  
PO Box 714 COOMA NSW 2630

[Preferences](#) | [Unsubscribe](#)



SNOWY MONARO  
REGIONAL COUNCIL

# Council News

Updates | Information | Consultation

## Friday 25 November 2022

It's been a very busy time since our last newsletter two weeks ago! We've had the November Council Meeting and then the Extraordinary Council Meeting on the Financial Sustainability Review and Special Rate Variation consideration.

To read the full business papers and attachments or to watch an on-demand replay of the webcasts, go to [www.snowymonaro.nsw.gov.au/Council/Meetings](http://www.snowymonaro.nsw.gov.au/Council/Meetings)

With so much important ground to cover, we'll jump right in.

### IN THIS ISSUE...

- **Financial Sustainability Review & Special Rate Variation**
- **November Council Meeting**
- **Council joins declaration of statewide road emergency**
- **Weed of the Week: Silverleaf and Sticky Nightshade**
- **Planning documents endorsed for public consultation and feedback**
- **Celebrate Ability: International Day of People with Disability**





### **FINANCIAL SUSTAINABILITY REVIEW & SPECIAL RATE VARIATION**

Following yesterday's Extraordinary Meeting of Council, a rescission motion was lodged after the meeting, against the resolution from item 8.2.1. This item is now to be considered on Tuesday 29 November 2022 at another Extraordinary Meeting of Council at 5pm in Cooma.

An update will be sent post that meeting to advise the media and community of next steps and decisions. Click [read more](#) to read a summary of the meeting.

[Read more](#)



## NOVEMBER COUNCIL MEETING

The November ordinary meeting of Snowy Monaro Regional Council was held in Jindabyne. The major resolution was the endorsement for consultation of draft planning and development documents, covered in more detail later in this newsletter. Also covered on the day was the endorsement of the Annual Report, appointment of Councillors to committees, re-accreditation of Snowy River Hostel, and a Mayoral Minute on the statewide road emergency declaration.

[Read more](#)



## COUNCIL JOINS DECLARATION OF STATEWIDE ROAD EMERGENCY

Councillors voted to support a Mayoral Minute tabled by Mayor Narelle Davis at the November Ordinary Council Meeting, formalising Snowy Monaro Regional Council's support of the statewide road emergency declaration.

The Office of Local Government NSW made this declaration on Thursday 3 November 2022, and was soon joined by the Country Mayors Association in calling on the NSW and Australian Governments to increase their funding and support for road maintenance and repair.

[Read more](#)





## **WEED OF THE WEEK: SILVERLEAF AND STICKY NIGHTSHADE**

There are two potential new weed threats to our region's prime grazing country – Silverleaf Nightshade and Sticky Nightshade. Preventing the introduction of these weed threats or eliminating them in early stages of invasion provides significantly greater return on investment than trying to manage a well-established weed.

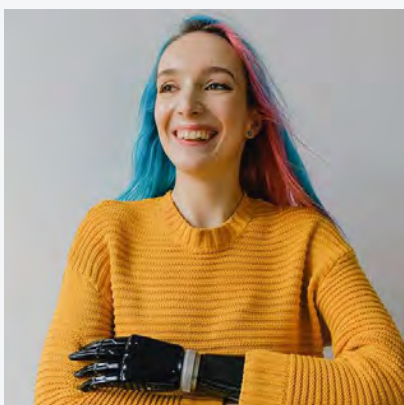
[Read more](#)



## **PLANNING DOCUMENTS ENDORSED FOR PUBLIC CONSULTATION AND FEEDBACK**

Councillors recently voted to endorse a suite of comprehensive planning documents for our region to be placed on public exhibition. The revised documents will update and unify development, land use, and development planning in our region. They are critical to balance the opportunities for growth and development with the protection of our unique scenic landscape and biodiversity values.

[Read more](#)



## **CELEBRATE ABILITY: INTERNATIONAL DAY OF PEOPLE WITH A DISABILITY**

Celebrate International Day of People with Disability on Friday 2 December 2022 from 2pm – 5pm, at the Celebrate Ability Festival at Cooma Showground's Multifunction Centre. This day is about breaking down disability barriers and celebrating abilities of people all over the world.

[Read more](#)

## CUSTOMER SERVICE HOURS

**Monday to Friday: 8.30am-4.30pm**

*Payments 8.30am to 4pm only*

- **Cooma** 81 Commissioner Street
- **Berridale** 2 Myack Street
- **Bombala** 71 Caveat Street
- **Jindabyne** 2/1 Gippsland Street

[Contact details](#)

## JOIN OUR COUNCIL TEAM

We have new job listings every week.

If you've been looking for your next step, something new, or just want an opportunity to work with and for your community, get in touch today!

[Click here for your next role](#)



**SNOWY MONARO**  
REGIONAL COUNCIL

 [Forward](#)

SNOWY MONARO REGIONAL COUNCIL  
Head Office 81 Commissioner Street COOMA NSW 2630  
PO Box 714 COOMA NSW 2630

[Preferences](#) | [Unsubscribe](#)



## Special Edition: January 2023

In this special edition of Council's Economic Development newsletter we're putting out a last reminder for the Snowy Monaro business community to share their opinion on the proposed Special Rate Variation (SRV) for our region.

The outcome of this consultation will affect every business in the Snowy Monaro and this consultation is your opportunity to help inform what the future of rates will look like in our region.

The **consultation is open until 11.59pm Sunday 22 January 2023** for you to nominate your preferred option through our short online survey and provide your feedback. Written submissions are also welcome via email or hard copy.

**If you haven't had your say already – there's still time to get involved.**

Visit [yoursaysnowymonaro.com.au/special-rate-variation](https://yoursaysnowymonaro.com.au/special-rate-variation) today to have your say.

Feel free to jump right through to the Your Say website linked above to read detailed information or to complete the survey now – or read on here to get a rundown, with direct links to specific resources as a part of this consultation.

---



## **Special Rate Variation consultation update, Financial Sustainability Review and Council audit information**

Many questions and a significant proportion of community comments received during the Special Rate Variation (SRV) consultation have been concerned with the Financial Sustainability Review (FSR), why we went with the FSR instead of a just an audit, and where to access the results of the FSR and other Council financial information and documentation.

### **Audit – annual**

Council is audited every year – independently, which occurs separately from our own internal audit system. An audit is the examination of the financial report of an organisation. The financial report includes a balance sheet, an income statement, a statement of changes in equity, a cash flow statement, and notes comprising a summary of significant accounting policies and other explanatory notes.

This process for Snowy Monaro Regional Council is undertaken by the Audit Office of New South Wales. The outcome of this years' audit can be found in the Council Business Papers from the December 2022 Meeting at:

[www.snowymonaro.nsw.gov.au/Council/Meetings/Business-Papers-and-Minutes-2022](http://www.snowymonaro.nsw.gov.au/Council/Meetings/Business-Papers-and-Minutes-2022)

Auditors cannot predict the future – the audit relates to a specific past accounting period. It does not judge what may happen in the future and so cannot provide assurance that Council will continue in business indefinitely.

### **Beyond the traditional audit – Financial Sustainability Review**



Councillors voted to engage AEC Group, an independent consultant, to conduct an investigation that went beyond a traditional audit – a Financial Sustainability Review. This review investigated financial information, asset management and Council's workforce from pre-merger (three shires) to the present day as one regional Council.

AEC Group made several observations on finances, asset management and workforce and made several recommendations for improvement. These were adopted by Council at the extraordinary meeting in November 2022, with the full report available here:

[www.snowymonaro.nsw.gov.au/Council/Meetings/Business-Papers-and-Minutes-2022](http://www.snowymonaro.nsw.gov.au/Council/Meetings/Business-Papers-and-Minutes-2022)

The information in the Financial Sustainability Review is a transparent account of Council operations since merger and the three former Councils in the years immediately prior to the merger.

The independent FSR showed that without an increase in rates and the implementation of identified efficiency improvements, Council would have no choice but to cut services and allow infrastructure and public facilities to degrade and eventually close.

The financial sustainability review has 24 recommendations, a number of those with multiple parts. Most are about making changes to be more efficient.

The problem faced by your Council is that the overall amount needed to efficiently provide services is higher than the amount of funds available, so more investment is needed along with careful spending of what is available.

The Financial Sustainability Review has confirmed that there is a long term structural financial issue at Snowy Monaro Regional Council, inherited from the predecessor shires. We have been told that the issues we are facing are the same issues similar Councils are facing – that is, we are not unique in the difficulties we face.

We have been told that for a long time the Council has not been investing enough into the community's infrastructure to replace what we are using up, creating a bigger and bigger burden on future generations.

The NSW Auditor General, NSW Office of Local Government (OLG) and AEC Group have all said there is a significant financial issue and Council needs to start making hard decisions to fix the situation, which is what is being done now through this SRV consultation.

In addition to the FSR and the external and independent audit, the OLG is also closely monitoring our performance as an organisation.



The spending of any funds raised from a Special Rate Variation (SRV) must be reported in Council's Annual Report each year. This is non-negotiable and the community can have confidence that they will be able to see precisely what we spend any additional money raised through an SRV on.

**SRV funds will be allocated to:**

- Renewal of the sealed and unsealed road network
- Replacement of aged timber bridges
- Renewal work on the buildings that have deteriorated over time
- Improving the asset management planning systems.

**Consultation on the potential Special Rate Variation for the Snowy Monaro is open for your response until 11.59pm Sunday 22 January 2023.**

There is a short survey option and if you would like to make a written submission, please send to [council@snowymonaro.nsw.gov.au](mailto:council@snowymonaro.nsw.gov.au) or drop off in person before 4pm Friday 20 January 2023 at any council office.

Visit [www.yoursaysnowymonaro.com.au](http://www.yoursaysnowymonaro.com.au) to have your say, ask questions, and learn more about this process and Council's finances.

**More Information and Registration Here**



**Online Information Session - TOMORROW**

Our final online information session offers further opportunity to learn about

the potential rate variation options and what they could mean for you and your business.

**Potential Special Rate Variation online information session date:**

*To register for this session, please go to our Your Say website to learn more or register using the Eventbrite links below.*

- **Wednesday 18 January 2023 – 7pm to 8.30pm - [Register here](#)**

**[More Information and Registration Here](#)**



**Special Rate Variation Calculator: now available**

You can access an easy-to-use Special Rate Variation (SRV) calculator through the SRV Your Say consultation website.

This calculator will allow all you to more easily understand how each of the three SRV scenarios being considered by councillors at end January 2023 would potentially affect you and the rates charged for your property.

If you have questions or concerns, the Your Say website contains an FAQ (frequently asked questions) section, as well as a question-and-answer section where you can read community questions and Council answers – and ask your own.

**Click the 'More Information' link below to access the calculator.**

[More Information](#)

Please feel free to share this email with members of our business community you think would benefit. Encourage them to sign up through the link on our website.

### GET IN TOUCH

council@snowymonaro.nsw.gov.au  
or call **24/7 on 1300 345 345**

[Contact details](#)

### ADDITIONAL RESOURCES

No matter where your business is located across the Snowy Monaro, there are plenty of organisations and resources available.

Head to the link below to find your nearest Chamber of Commerce or learn more in the link below.

[More information](#)



**SNOWY MONARO**  
REGIONAL COUNCIL

[Forward](#)

SNOWY MONARO REGIONAL COUNCIL  
Head Office 81 Commissioner Street COOMA NSW 2630  
PO Box 714 COOMA NSW 2630

[Preferences](#) | [Unsubscribe](#)



## Proposed Special Rate Variation for Snowy Monaro Regional Council

### Letter from Narelle Davis Mayor, Snowy Monaro Regional Council

Dear ratepayer,

I encourage your participation in providing feedback on the proposed Special Rate Variation (SRV) to be implemented in the 2023/24 Budget for Snowy Monaro Regional Council (SMRC).

At a recent meeting, your Council decided to lodge an Expression of Interest to IPART (Independent Pricing and Regulatory Tribunal NSW) for a permanent Special Rate Variation. This will impact the percentage increase to Council's total rates revenue, not how much your individual rates will change.

Following a detailed and independent analysis of our financial position, plus ongoing service reviews, it is clear that an increase in rates is a long overdue and critical step to ensure we can become financially sustainable while maintaining service levels over the long-term, as expected by our community.

The rate increases set by the NSW State Government have not kept pace with

cost escalations faced by Council in providing services to our community. Like many other NSW councils, SMRC has not generated revenue sufficient to undertake enough investment in community assets.

The independent analysis showed that Council's financial position will deteriorate to an average operating deficit of \$8.5million a year which is not sustainable. The impact of the deficit is that we are unable to invest enough money each year in necessary maintenance and renewal. Therefore, our roads, parks and gardens, and buildings will continue to deteriorate. Services and associated service levels will also need to be reduced.

You, the community, have consistently indicated that you do not wish to see Council's infrastructure assets deteriorate and service levels reduced.

The proposed SRV will generate the necessary revenue that will be used to fund our existing services and provide required funding for the following:

- Resealing bitumen roads
- Putting gravel back on our unsealed roads
- Improve our stormwater infrastructure
- Replacement of bridges that are failing
- Bringing our community and other buildings back to a good condition
- Investment in asset management capability

If implemented, the SRV will apply to your general rates only. Revenue raised from a SRV must be accounted for each year in our annual report, showing where the money has been spent.

The SRV does not apply to your waste management, water and sewerage charges.

If the SRV is not approved, Council will need to implement service level reductions totalling \$28.8 million over the next ten years. Services will need to be discontinued, roads and buildings will continue to deteriorate, and unsafe facilities will be closed so that necessary funds can be redirected to keep essential infrastructure safe and functional for our community.

I encourage you to read the fact sheet enclosed with this letter and access further information on our Your Say website, where you can also select your preferred SRV option in the online survey by Sunday 22 January 2023.

**There are three options for your consideration:**

- Option 1 – 53% rate increase to be paid in 2023/24. Enables an additional investment of \$64.3 million in asset renewal to stabilise the current infrastructure backlog and to undertake additional renewal and



maintenance of our roads and other community assets. Current service levels will be maintained while also progressively improving the operating result ie. financial sustainability.

- Option 2 – 55.25% rate increase spread over five years starting from 2023/24. Enables an additional staged investment of \$51.1 million in asset renewal to progressively stabilise the current infrastructure backlog and to undertake additional renewal and maintenance of our roads and other community assets. Over time, current service levels will be maintained while also progressively improving the operating result ie. financial sustainability.
- Option 3 – No SRV, Rate Peg Only. Assets and service levels will deteriorate, and the current infrastructure backlog will continue to grow as additional assets deteriorate below satisfactory condition. Council will be required to reduce services and close unsafe facilities.

We are engaging with our community to ensure all interested people are informed and that you are provided an opportunity to provide feedback on the options presented for the SRV application proposal. The details of our various community engagement activities are on our Your Say website. Please visit <https://yoursaysnowymonaro.com.au/special-rate-variation> to have your say, read the documents, consider the options and complete the survey.

I look forward to working together with you to ensure that we are able to continue to provide services and the community over the long-term, and in line with expectations.

**Councillor Narelle Davis**  
**Mayor, Snowy Monaro Regional Council**

## Special Rate Variation

### Proposed options 2023/24

#### **Option 1 – 53% rate increase to be paid in 2023/24**

Enables an additional investment of \$64.3 million in asset renewal to stabilise the current infrastructure backlog and to undertake additional renewal and maintenance of our roads and other community assets. Current service levels will be maintained while also progressively improving the operating result i.e. financial sustainability.

#### **Option 2 – 55.25% rate increase spread over five years starting from 2023/24**

Enables an additional staged investment of \$51.1 million in asset renewal to

progressively stabilise the current infrastructure backlog and to undertake additional renewal and maintenance of our roads and other community assets.

Over time, current service levels will be maintained while also progressively improving the operating result ie. financial sustainability.

### **Option 3 – No SRV, Rate Peg Only**

Assets and service levels will deteriorate, and the current infrastructure backlog will continue to grow as additional assets deteriorate below satisfactory condition. Council will be required to reduce services and close unsafe facilities.

[Click here to view the Special Rate Variation Fact Sheets](#)

## Special Rate Variation Facts and information

### **What is a Special Rate Variation (SRV) and Rate-Pegging?**

Rates increase each year in line with an amount set by the State Government. This amount is calculated every year and is called the 'rate peg'. This is decided by the Independent Pricing and Regulatory Tribunal (IPART). For the 2023/24 financial year the rate peg applied to Snowy Monaro Regional Council, will be 4.0%.

If a council's rate revenue is not enough to maintain service levels, it can apply to IPART to increase overall rate revenue by more than the rate peg. This is known as a Special Rate Variation (SRV). In order to apply for an SRV, councils must demonstrate to the community and IPART that they need the money and have implemented improvements to be more efficient and productive.

### **What is the impact of the Special Rate Variation (SRV) on my rates?**

Table 1 shows the impact of implementing the SRV on the average rates by each rate category.

**Table 1 - Increase in 2023/24 Average Rate**

Rating Category	2022/23 Rate	Option 1	Option 2	Option 3
Residential	\$980.29	\$1,499.84	\$1,100.38	\$1,019.50
Farmland	\$2,026.30	\$3,100.24	\$2,274.52	\$2,107.35
Business	\$1,071.29	\$1,639.07	\$1,202.52	\$1,114.14
Electricity Generation	\$43,806.17	\$67,023.44	\$49,172.43	\$45,558.42

### **What will SRV funds be used for?**

Three options are provided for consideration based on rate increases;

- two SRV options
- one limited to the rate-peg

The proposed SRV will generate the necessary revenue that will be used to fund our existing services and provide required funding for the following:

- Resealing bitumen roads
- Putting gravel back on our unsealed roads
- Improve our stormwater infrastructure
- Replacement of bridges that are failing
- Bringing our community and other buildings back to a good condition
- Investment in asset management capability

Option 1 will enable for the above service levels to commence from 2023/24, whereas Option 2 will allow for a staged increase in asset renewals and maintenance of current service levels over a number of years.

The Resourcing Strategy is on public exhibition, and can be accessed on Council's Your Say website or at any Council office. Residents are being asked for their views on the three options.

### Current Council services



**Have your say today**

**WHY HAVE I RECEIVED THIS**

**WHERE CAN I LEARN MORE?**

## EMAIL?

We are sending you this email as a ratepayer in the Snowy Monaro, as any potential Special Rate Variation (SRV) would effect how much you pay in rates.

Visit

[www.yoursaysnowymonaro.com.au](http://www.yoursaysnowymonaro.com.au)

for all the information on the proposed Special Rate Variation.

Call us on 1300 345 345 to speak with our team, or email [council@snowymonaro.nsw.gov.au](mailto:council@snowymonaro.nsw.gov.au)



**SNOWY MONARO**  
REGIONAL COUNCIL

 Forward

SNOWY MONARO REGIONAL COUNCIL  
Head Office 81 Commissioner Street COOMA NSW 2630  
PO Box 714 COOMA NSW 2630

[Preferences](#) | [Unsubscribe](#)