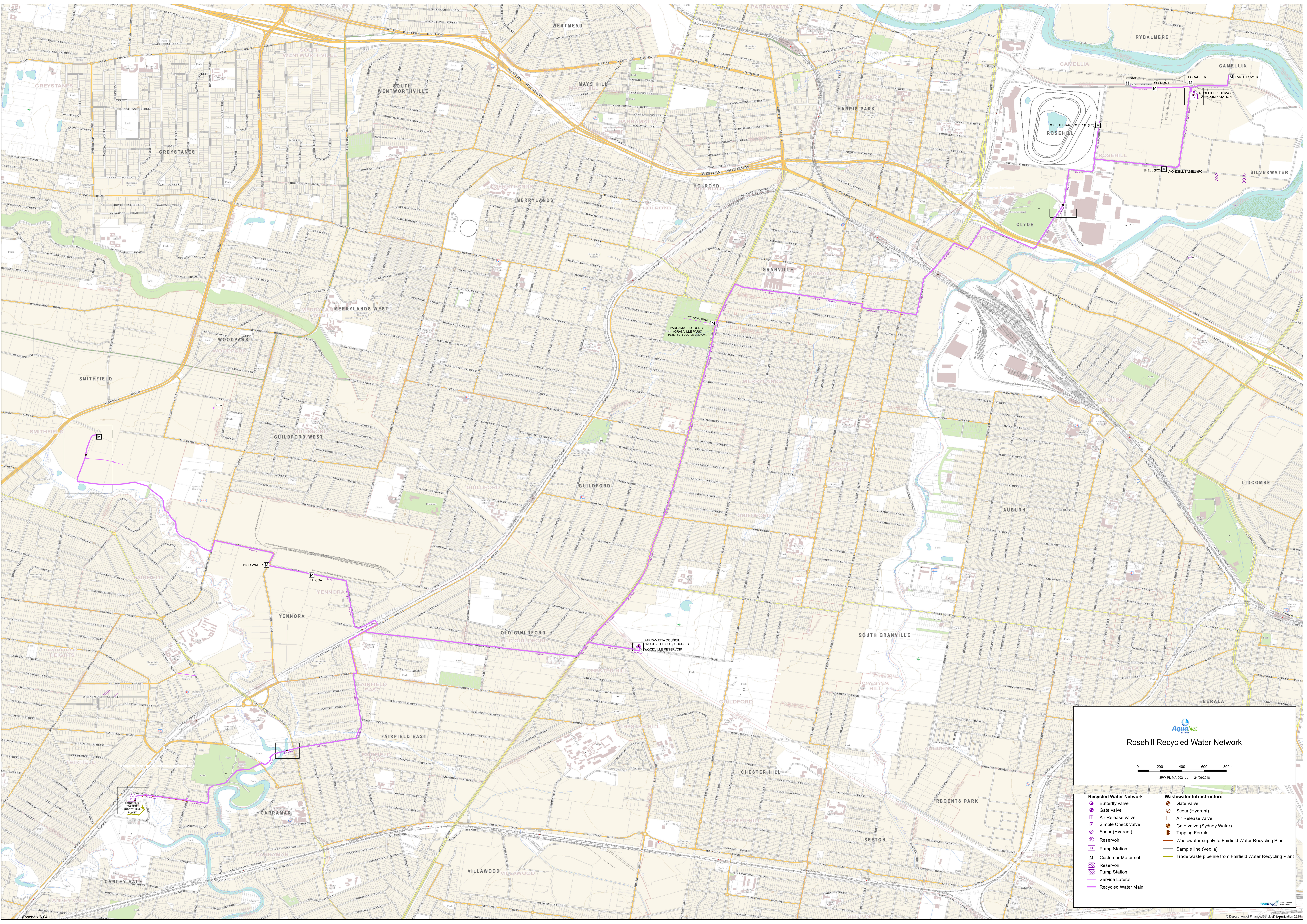



An aerial photograph of an industrial facility, likely a water treatment plant. The facility features several large, cylindrical storage tanks, some with white tops and others with green bodies. A large, rectangular building with a white roof and green walls is situated in the center. The facility is surrounded by lush green trees and vegetation. In the foreground, there are residential houses with green roofs and a road with a railway track running alongside it. The background shows more dense forest.

## Appendix A.04

### Scheme Summary

Rosehill Network Pty Ltd – WICA Variation Application





### Rosehill Recycled Water Network

0200400600800m

JRW-PL-MA-002 rev1 24/09/2018

Recycled Water Network	Wastewater Infrastructure
Butterfly valve	Gate valve
Gate valve	Scour (Hydrant)
Air Release valve	Air Release valve
Simple Check valve	Gate valve (Sydney Water)
Scour (Hydrant)	Tapping Ferrule
Reservoir	Wastewater supply to Fairfield Water Recycling Plant
Pump Station	Sample line (Velloia)
Customer Meter set	Trade waste pipeline from Fairfield Water Recycling Plant
Reservoir	
Pump Station	
Service Lateral	
Recycled Water Main	

An aerial photograph of an industrial facility, likely a water treatment plant. The facility features several large, cylindrical storage tanks, some with white tops and others with green bodies. A large, long building with a white roof and green walls is situated in the center. The facility is surrounded by trees and a road. In the foreground, there are residential houses and a railway track.

# Appendix A.04A

## Overview of Application

Rosehill Network Pty Ltd – WICA Variation Application

## Appendix A.04A

This application seeks to vary Rosehill Network Pty Ltd's Network Operator's Licence 09\_002 in the following ways:

1. Remove Jemena Limited and its subsidiary, Jemena Asset Management Pty Ltd, as Authorised Persons; and
2. Extend the scope of the licence to include the Fairfield Advanced Water Treatment Plant assets.

### 1. Remove Jemena Limited and its subsidiary, Jemena Asset Management Pty Ltd, as Authorised Persons

On 30 September 2019, 100% of the shares of Rosehill Network were acquired by WUA Sydney Holdings Pty Ltd, a member of the Water Utilities Australia group of companies ('WUA'), from Jemena Limited. WUA also acquired the assets that form the Fairfield Advanced Water Treatment Plant ('Plant') on this date from Veolia Water Australia Pty Ltd. As such, WUA is now the beneficial owner of the entire Rosehill Recycled Water Scheme consisting of the Plant and Network assets. As a result of this change, Rosehill Network applies to vary Network Operator's Licence 09\_002 to remove Jemena Limited and its subsidiary Jemena Asset Management Pty Ltd as Authorised Persons on the licence.

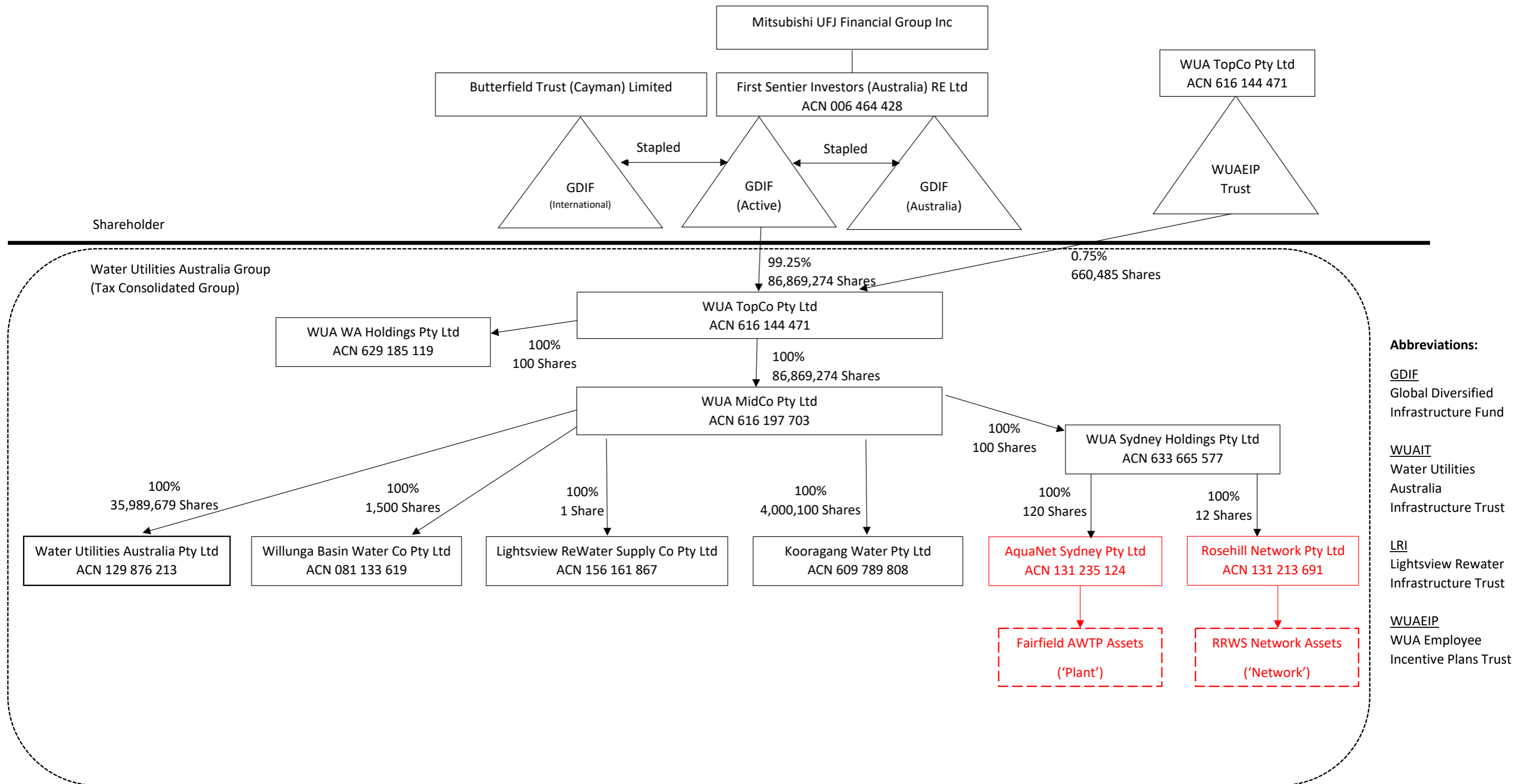
Jemena Limited and Jemena Asset Management Pty Ltd no longer have any involvement with the Rosehill Recycled Water Scheme.

### 2. Extend the scope of the licence to include the Fairfield Advanced Water Treatment Plant assets

Rosehill Network Pty Ltd seeks to have the Network Operator's Licence No. 09\_002 extended to include the Plant assets as well as the Network assets of the Rosehill Recycled Water Scheme.

The Plant assets are currently covered by Network Operator's Licence No. 09\_001 which is held by Veolia Water Australia Pty Ltd ('Veolia'). At the time of Network Operator's Licence No. 09\_001 being granted, Veolia owned the Plant assets. These assets were transferred to WUA on 30 September 2019, so it is no longer appropriate for Veolia to hold the Network Operator's Licence for these assets. WUA will instruct Veolia to voluntarily surrender Network Operator's Licence No. 09\_001 upon the Plant assets being transferred to Network Operator's Licence No. 09\_002.

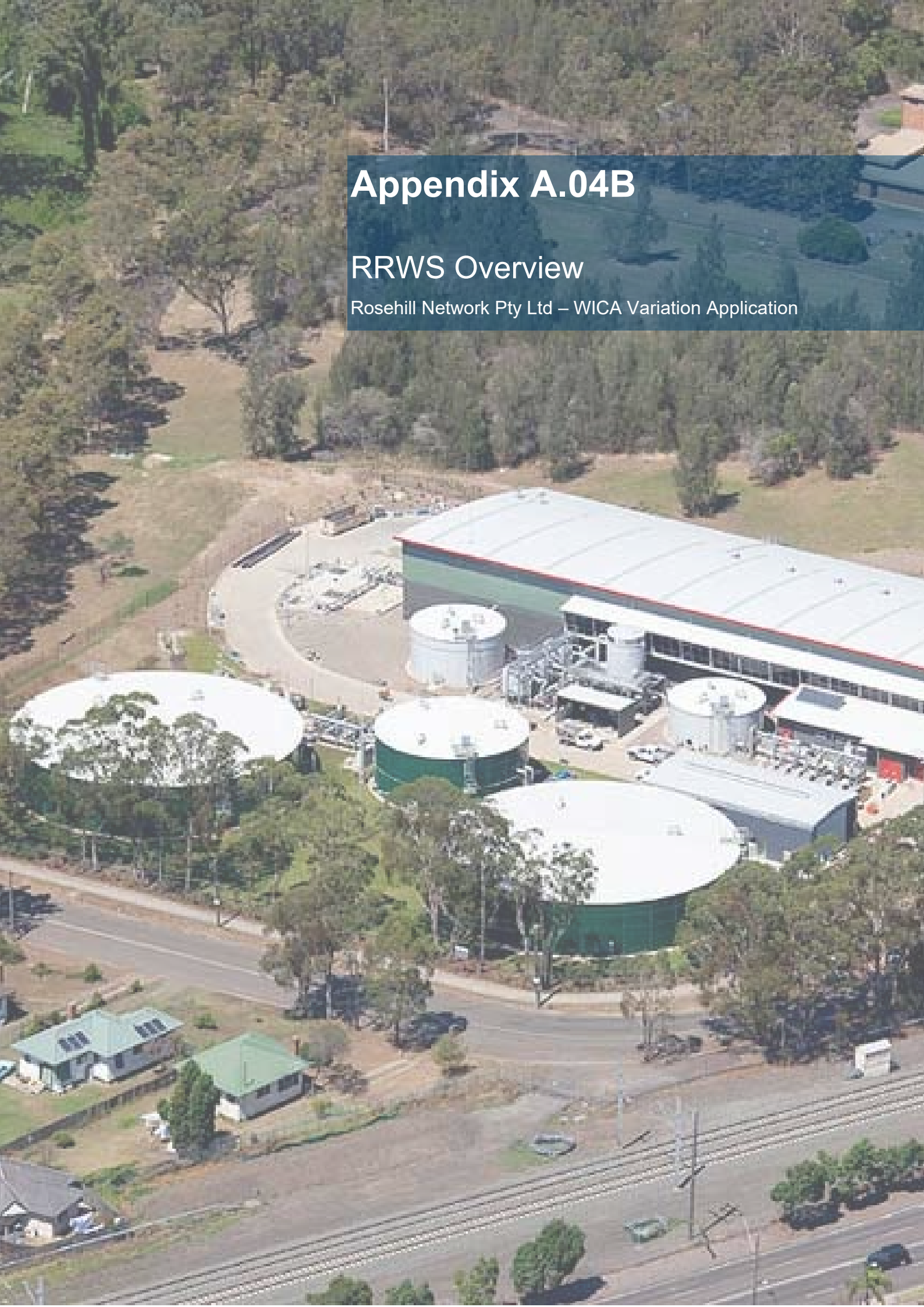
## Rosehill Recycled Water Scheme Ownership Arrangements



# Appendix A.04B

## RRWS Overview

Rosehill Network Pty Ltd – WICA Variation Application



# Rosehill Recycled Water Scheme Overview

## Purpose and Scope

### *Why is this important?*

The purpose of this procedure is to provide an overview of the Rosehill Recycled Water Scheme (RRWS).

### *Who does it apply to?*

This procedure relates to the Fairfield Advanced Water Treatment Plant (FAWTP) and the Rosehill Recycled Water Network (RRWN).

## Governance, Roles and Responsibilities

Veolia has set out roles and responsibilities to ensure the approach to the procedure and its implementation are fulfilled. The following specific roles and responsibilities have been identified: -

Role	Responsibility
Process Engineer	To maintain this procedure and ensure it is available and used when required.

## Scheme overview

### 1. Source Water

- 1.1. The source water for the RRWS comes from the catchments of Liverpool and Glenfield STPs, which form part of the Malabar Wastewater System. The two STPs receive both

domestic and industrial waste (trade waste).

- 1.2. Liverpool STP treats approximately 24 ML/d and Glenfield STP treats approximately 35 ML/d.
- 1.3. Both plants discharge into the Liverpool Ashtonfield Pipeline (LAP), from which the FAWTP draws its feed water.

## 2. Description of Scheme Elements

- 2.1. A description of the RRWS elements is given in Table 1 below:

**Table 1: Elements of the Rosehill Recycled Water Scheme**

Stage No	Item	Description
1	Domestic sewage	Liverpool and Glenfield STPs form part of the Malabar Sewage System.
2	Trade waste	Trade waste from a variety of industrial sources.
3	Liverpool STP – primary treatment	Inlet works and primary sedimentation tanks.
4	Liverpool STP – secondary treatment	Aeration tanks, secondary clarifiers, an oxidation pond and a chlorine contact tank.
5	Glenfield STP – primary treatment	Inlet works and primary sedimentation tanks.
6	Glenfield STP – secondary treatment	Aeration tanks, secondary clarifiers, an oxidation pond and a chlorine contact tank.
7	Effluent quality monitoring – LAP	A sample line from the LAP to the plant allows online monitoring and grab samples when the Plant is off -line. Online monitoring includes ammonia, conductivity, turbidity and TOC.
8	Fine and coarse strainers	3 mm coarse strainer followed by a 0.5 mm fine strainer.
9	3 ML feed storage tank	3 ML epoxy-coated steel panel tank, covered, to provide feed water storage and buffering capacity for periods during which the effluent in the LAP is out of specification.
10	Ultrafiltration	Siemens submerged ultrafiltration system using Memcor S10V modules. Five cells comprising four duty and one standby cell. The UF system receives 30.1 ML/d feed and produces 28.2 ML/d filtrate. The Memcor S10V modules have a pore size of 0.4µm.

**NSW/Fairfield: Rosehill Scheme Overview**
**Issue Date 19/02/2020**

11	Reverse osmosis	Two-stage, single-pass reverse osmosis system. Eight trains comprising seven duty and one standby train. Stage 1 contains 18 pressure vessels while stage 2 contains 9 pressure vessels. In total, each train contains 189 Hydronautics ESPA2 membranes. The RO system receives 27.2 ML/d feed and produces 20.4 ML/d permeate. The RO brine is sent through the wastewater system to trade waste. The Hydronautics ESPA2 membranes have a salt rejection of 99.6%.
12	Ion exchange	Three 50% strong acid cation exchange units containing Purolite SGC650 resin. The primary purpose of the ion exchange step is to reduce the ammonia in the permeate to the level required by industrial customers.
13	Degassing	Degasser tower with 3 x 50% fans and the ability to process up to 25 ML/d, to suit a possible future expansion of the RWTP.
14	Permeate collection tank	180 kL steel panel tank with a rubber liner.
15	Final chlorination and pH correction	Sodium hypochlorite and sodium hydroxide dosing prior to a 1.07 ML detention tank that provides 1 hour's storage at 25 ML/d throughput. A minimum storage time of 1 hour at 25 ML/d allows time for chlorine disinfection even in the event of a possible expansion of the plant to treat 25 ML/d. The tank is a steel panel tank with a rubber liner.
16	Final recycled water quality control	Online monitoring for conductivity, pH, free chlorine, turbidity and ammonia.
17	3 ML recycled water storage tank	3 MLeпоxy-coated steel panel tank, covered, to provide recycled water storage. Veolia is responsible for the quality of the water within this tank. Veolia is responsible for maintenance of the tank and associated instruments.
18	Fairfield pump station	Located at the site of the Rosehill RWTP, the Fairfield pump station contains 3 x 50% centrifugal pumps with variable speed drive. The pumps are able to pump up to 370 L/s (32 ML/d) to handle peak flows at the 25 ML/d rate of the possible future plant expansion. The minimum duty rate to maintain minimum pressure at Smithfield is 85 L/s.
19	Recycled water network	20 km of recycled water network.
20	Woodville reservoir	Effective capacity 1.4 ML.

**NSW/Fairfield: Rosehill Scheme Overview**
**Issue Date 19/02/2020**

21	Rosehill reservoir	Effective capacity 6 ML. Operating storage approximately 3.9. ML.
22	Rosehill pump station	17 ML/d pumping capacity.
23	End User	Taking water for industrial use as specified in Section 5 below. Once used in the system, waste recycled water will be discharged to sewer.

### 3. Flow Diagram

3.1. The flow diagram for the Rosehill RWS is shown in Figure 1 below.

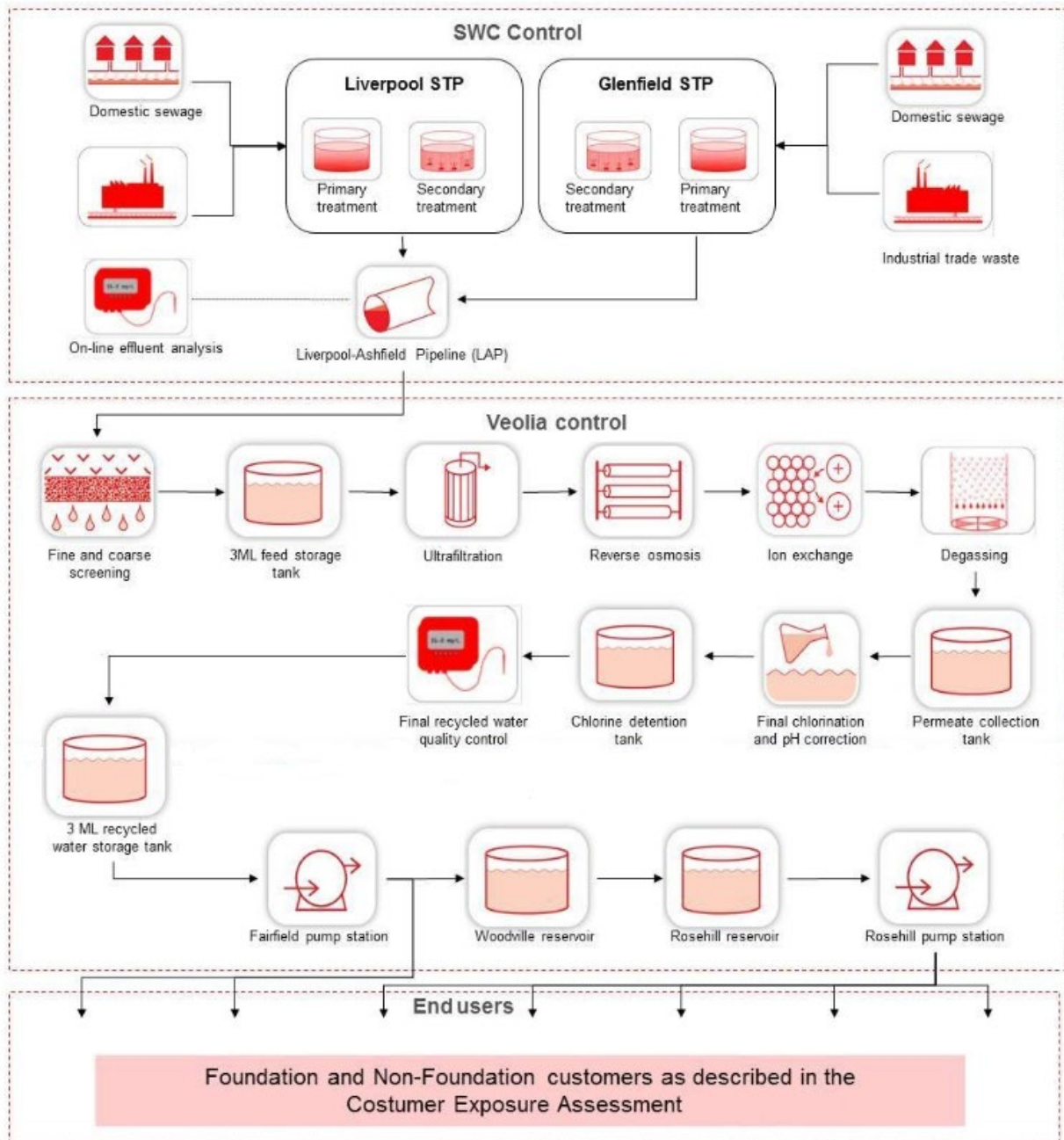


Figure 1 : Flow diagram for the Rosehill RWS

## 4. Description of the Interface Points

- 4.1. The limits of the agreement for the Asset Management and the Operations of the FRWP are defined in TEM-3942.

## 5. Description of End Users

- 5.1. Veolia supplies the Recycled Water to Customers that have recycled water supply agreements with AquaNet or Sydney Water.
- 5.2. A summary of Customers that have a supply agreement can be found in the Customer Exposure Assessment (EXT-3877). That document also indicates the intended end user's activities (uses) by those customers.
- 5.3. The Rosehill Scheme supplies Recycled Water to industrial, commercial and residential uses for the following authorised uses:
  - Cooling tower make-up
  - Industrial process
  - Wash-down
  - Fire fighting
  - Irrigation
  - Toilet Flushing
  - Washing Machine (cold tap)

## Training

A training assessment shall be carried out according to the Training and Competency Procedure to identify:

The scope of the training required;

- Key personnel, Veolia employees and contractors, who require training; and
- The method of delivery appropriate to the audience and business needs.

## Audit Guidelines

- Review if this procedure is in line with the relevant corporate standard.
- Review if the requirements of this procedure are implemented.

## Other Considerations

Not applicable.

## Terms and Definitions

Audit terms and definitions are available in the BMS Dictionary.

Term	Definition
STP	Sewage Treatment Plant
RRWS	Rosehill Recycled Water Scheme
FAWTP	Fairfield Advanced Water Treatment Plant
RRWN	Rosehill Recycled Water Network

## Related Documents

Document Code/ Reference	Document Name
MAN-3936	Water Quality Management Plan
EXT-3877	Customer Exposure Assessment
TEM-3942	Definition of Interface Points

# Appendix A.05.1

## Experience – Network Operator

Rosehill Network Pty Ltd – WICA Application



Water Utilities Australia (**'WUA'**) currently supplies recycled water to residential, irrigation and industrial customers in South Australia and New South Wales. Our existing water assets are:

- Lightsview ReWater Supply Co (**'Lightsview'**) at Lightsview in South Australia
- Willunga Basin Water Company (**'WBWC'**) located in the McLaren Vale in South Australia
- Kooragang Industrial Water Scheme (**'KIWS'**) in Newcastle, New South Wales
- Rosehill Recycled Water Scheme (**'RRWS'**) in Sydney, New South Wales

WUA has very significant water utility management and technical engineering capability in its staff and long-term contractors to ensure optimum performance and cost efficiency of the investments. Our operations contractors, SUEZ and Veolia, are some of the world's largest and most capable water companies both of whom have local presence in the Hunter region.

These water utilities are governed by multiple regulatory agencies including economic (IPART, ESCOSA), environmental (EPA), and public health (SA Health, NSW Health) agencies. WUA holds the required operating licences in each state and interacts with the regulators to ensure compliance with regulatory requirements.

Where necessary, WUA manages the customer interface providing billing and customer services and in some instances access to on-line metering to individual customers.

### **Willunga Basin Water Company**

The McLaren Vale Wine Region is located 25 km south of Adelaide in South Australia. McLaren Vale is one of Australia's premium wine production regions. Water is critical to the on-going viability of the region and Willunga Basin Water has been supplying recycled wastewater to the region since 2009.

Willunga Basin Water currently supplies 6,500ML per annum of recycled water to the region which is 60% of the regions annual water demand. Groundwater aquifers are used to supply the remaining water and over extraction and climate impacts are seeing the aquifers become increasingly saline and unsuitable for high quality grape production.

Water is sourced from SA Water's Christies Beach Wastewater Treatment Plant and the City of Onkaparinga's Willunga Community Wastewater Scheme (**'CWMS'**) and Sellicks Beach CWMS. These combined water sources provide WBWC's customers with a reliable supply of recycled water that is consistent in quality and drought independent. WUA manages all aspects of operation of the scheme with its own staff including maintenance, meter reading, billing and customer service

The regions groundwater is under increasing pressure and irrigators are experiencing a gradual increase in salinity over time. Some areas of McLaren Vale have seen salinities increase to levels that put the production of high-quality grapes at risk. With more recycled water available from Christies Beach WWTP, WUBWC have embarked on a \$10M expansion project that will see it increase recycled

water supply by 800ML/p.a. by 1 July 2010. A second stage of expansion is being developed with the long-term view to increase recycled water supply in the region to 8,000ML/p.a by 2025.

McLaren Vales annual wine production is valued at over \$400M and, with associated tourism revenue of \$150M per annum, the McLaren Vale Wine Industry is a major economic region for South Australia. Willunga Basin Water's supply of recycled water is critical in maintaining the viability of the region into the future.

### **Lightsview ReWater Scheme**

The Lightsview Development is a 2,500 property residential development located 7km north-east of the Adelaide CBD, in South Australia. With a focus on livability, the development includes a network of more than 14.9ha of landscaped parks and reserves designed to create a welcoming space to live, relax and play. These parks and reserves are irrigated with recycled stormwater supplied by Lightsview ReWater, with this water also used in every house for toilet flushing and garden watering.

Initiated in collaboration with the developer, PEET, and the South Australia Government's Urban Development Agency, Renewal SA, Lightsview ReWater treats and reticulates recycled stormwater which is sourced from a local council's stormwater harvesting scheme. By using recycled stormwater the Lightsview development can be kept green and lush even during periods of drought while reducing the demand on the River Murray which supplies Adelaide's drinking water. Once fully developed, Lightsview ReWater will supply over 200ML/p.a. of recycled stormwater to the development, which is 300ML per annum of water not taken from the River Murray.

### **Kooragang Industrial Water Scheme**

The KIWS is located in Newcastle, NSW, and supplies over 2,500ML/p.a. of recycled for industrial use in the Kooragang Island industrial zone.

Up to 12.6ML/d of treated effluent is supplied from Hunter Water's Shortland Wastewater Treatment Plant to WUA's Mayfield Advanced Water Treatment Plant ('**MAWTP**'). The MAWTP produces up to 9ML/d of high-quality recycled water through a process which includes micro-filtration, reverse osmosis, and chlorination.

WUA acquired KIWS in November 2017, which includes the MAWTP and the delivery pipeline. WUA, through Kooragang Water Pty Ltd, manages all aspects of the operations and maintenance of the scheme which is carried out under an Operations and Maintenance Agreement by SUEZ, an international expert in the operation of water infrastructure with a strong Australian presence.

The drought conditions in the Lower Hunter region see recycled water as a major opportunity for Hunter Water to reduce the demand on the potable water system. WUA is working with local customers and Hunter Water to increase the capacity of the plant and maximize the supply of recycled water across the Newcastle region.

## Rosehill Recycled Water Scheme

The RRWS is located in the western suburbs of Sydney, NSW, and can supply up to 20ML/d of high-quality recycled water suitable for irrigation (agricultural and open space), domestic use (garden irrigation and toilet flushing), and industrial use (cooling towers and wash down).

The RRWS receives treated effluent from Sydney Water at the Fairfield Advanced Water Treatment Plant ('**FAWTP**'). The FAWTP treats the effluent through a process that includes micro-filtration, reverse osmosis, and chlorination. This water is reticulated to customers through a 20km network through the Smithfield, Rosehill and Cameilla districts of Western Sydney. WUA, through AquaNet Sydney Pty Ltd and Rosehill Network Pty Ltd, manages all aspects of the operations and maintenance of the scheme which is carried out under an Operations and Maintenance Agreement by Veolia.

As with the Lower Hunter region, Western Sydney is experiencing drought conditions, and coupled with population growth, the potential for recycled water to play a critical role into the future is becoming increasingly important. WUA is working with customers and Sydney Water to maximise the supply of water from the scheme and to consider further options to increase recycled water production and supply across the region.

An aerial photograph of an industrial site, likely a water treatment or storage facility. The site features several large, cylindrical storage tanks, some with white tops and others with green bodies. A large, long building with a white roof and green walls is situated on the right side of the image. The facility is surrounded by dense green trees and vegetation. In the foreground, there are residential houses with green roofs and a road with railway tracks running alongside it. A semi-transparent dark blue box is overlaid on the top right of the image, containing white text.

## Appendix A.07

### Disqualified Corporations

Rosehill Network Pty Ltd – WICA Application

**Table B.1 Disqualified corporation checks: Rosehill Network Pty Ltd**

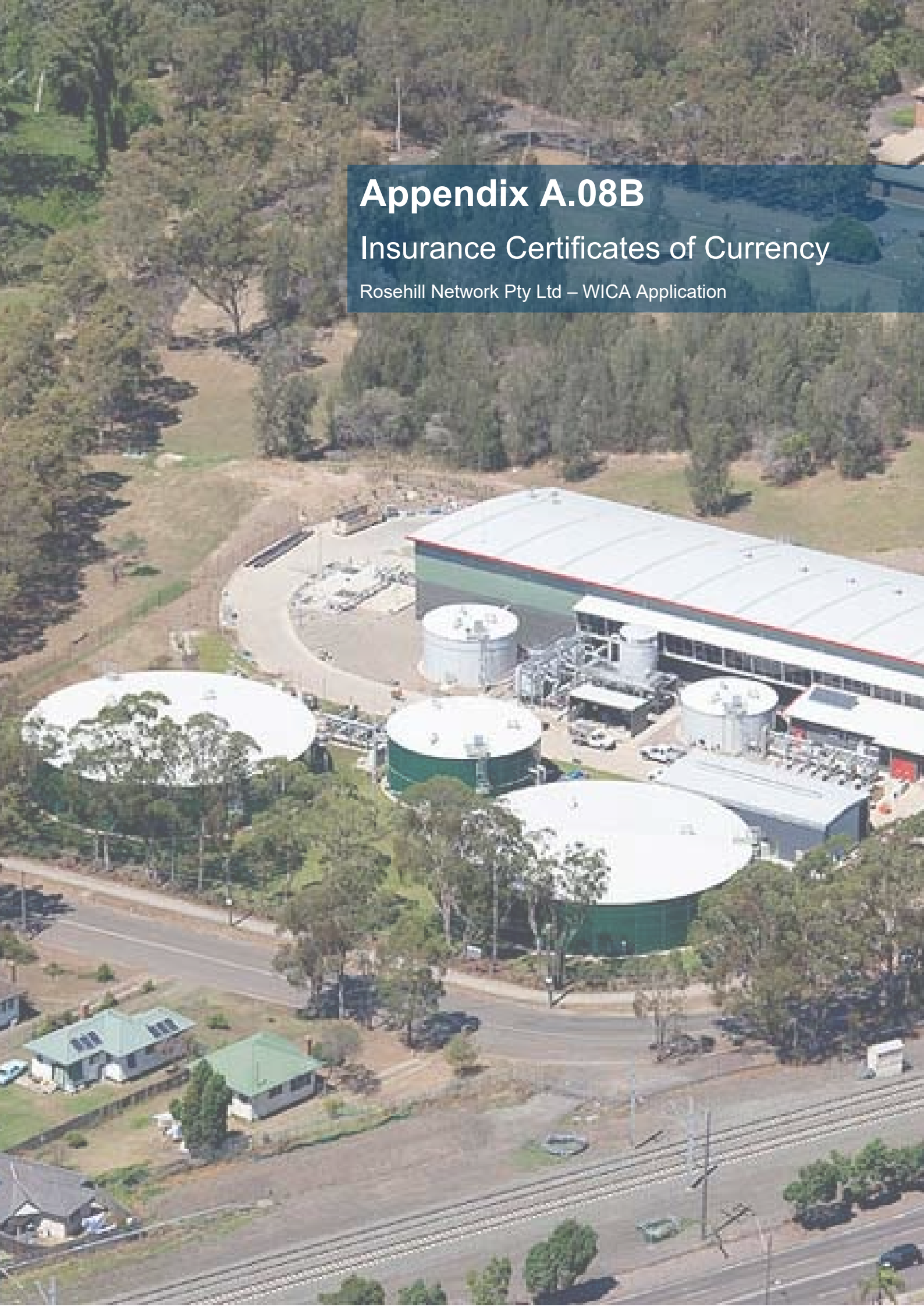
	Company name and ABN/ACN	Individual names	WIC Act  (disqualified/not disqualified)	ASIC banned and disqualified  (disqualified/not disqualified)	D&B Public record inquiry  (adverse information)
<b>Applicant corporation</b>					
	Rosehill Network Pty Ltd (ACN 131 213 691)	Daniel Vincent Latham Alan Shang Ta Wu Graham John Dooley		N/A	N/A
		Adam Luke Stevens Bradley James Rea Craig Andrew Heidenreich			
<b>Relevant related entities</b>					
	WUA TopCo Pty Ltd (ACN 616 144 471)	Daniel Vincent Latham Alan Shang Ta Wu Graham John Dooley Carmel Frances Krogh		N/A	N/A
		Adam Luke Stevens Bradley James Rea Craig Andrew Heidenreich			
	WUA MidCo Pty Ltd (ACN 616 197 703)	Daniel Vincent Latham Alan Shang Ta Wu Graham John Dooley Carmel Frances Krogh		N/A	N/A
		Adam Luke Stevens Bradley James Rea Craig Andrew Heidenreich			
	WUA Sydney Holdings Pty Ltd (ACN 633 665 577)	Daniel Vincent Latham Alan Shang Ta Wu Graham John Dooley		N/A	N/A

	Adam Luke Stevens Bradley James Rea Craig Andrew Heidenreich		
AquaNet Sydney Pty Ltd (ACN 131 235 124)	Daniel Vincent Latham Alan Shang Ta Wu Graham John Dooley Adam Luke Stevens Bradley James Rea Craig Andrew Heidenreich	N/A	N/A

# Appendix A.08B

## Insurance Certificates of Currency

Rosehill Network Pty Ltd – WICA Application



## Certificate of Currency

### Industrial Special Risks

Date: 29 May 2020

This certificate is issued as a matter of information only and confers no rights upon the holder. It does not amend, extend or alter the coverage afforded by the policy. It is provided as a summary only of the cover provided and is current only at the date of issue. For full particulars, reference must be made to the current policy wording.

**Insurer:** XL Insurance Company SE t/as Brooklyn Underwriting

**Policy Number:** TBA

**Insured:** WUA TopCo Pty Ltd, WUA MidCo Pty Ltd, Water Utilities Australia Pty Ltd, Lightsview Re-Water Supply Co Pty Ltd, Willunga Basin Water Co Pty Ltd, WUA Sydney Holdings Pty Ltd, AquaNet Sydney Pty Ltd, Rosehill Network Pty Ltd and/or any subsidiary, associated Company or related Body Corporate (as defined in the Corporations Act 2001) including all controlled or managed entities (excluding Kooragang Water Pty Ltd), or any other entities which the Insured has assumed an obligation to arrange insurance, as agreed from time to time with the Insurers and any other parties including joint ventures or partnerships all for their respective rights, interests and liabilities.

**Period of Insurance:** From: 4:00 p.m. local standard time 31 May 2020  
To: 4:00 p.m. local standard time 31 May 2021

**The Business:** Principally ownership, installation, operation, construction, maintenance, management and supervision of recycled water infrastructure including treatment plants, dams, pipelines, distribution, storage and sales of recycled and potable water and all business and trading activities associated with or incidental to any of the activities named above.

**Interest Insured** Material Loss or Damage

All Real and Personal Property of every kind and description (not otherwise excluded) for which a value has been declared to Insurers, including Personal Property of Directors and Employees whilst on the Insured's business and not otherwise Insured, as more fully defined in the original Policy Wording.

Coverage is endorsed to include Machinery Breakdown and General Property but subject to specific sub limits.

Consequential Loss

Loss sustained by the Insured resulting from an insured Material Loss or Damage event which causes interruption or interference with the Business up to a maximum Indemnity Period of 12 months.

Page 2  
29 May 2020

Coverage is endorsed to include customer and supplier dependencies

**Limit(s) of Liability:**

The amount set out hereunder represents the Insurer(s) maximum Limit of Liability any one loss or series of losses arising out of any one event subject to any Sub-Limits of Liability specified elsewhere in the Policy and the Schedule.

\$30,000,000 Combined Single Limit any one loss or series of losses arising out of any one event.

Yours faithfully,



Warwick Royson  
Principal

## Certificate of Currency

### Combined Liability

Date: 29 May 2020

This certificate is issued as a matter of information only and confers no rights upon the holder. It does not amend, extend or alter the coverage afforded by the policy. It is provided as a summary only of the cover provided and is current only at the date of issue. For full particulars, reference must be made to the current policy wording.

**Insurer(s):** Liberty Mutual Insurance Company t/as Liberty International Underwriters

**Policy Number:** SY-CAS-20-469004

**Insured:** WUA Topco Pty Limited; WUA Midco Pty Limited; Water Utilities Australia Pty Limited; Lightsview Re-Water Supply Co Pty Limited; Lightsview Re-Water Infrastructure Pty Limited; Water Utilities Australia Investment Pty Limited; Willunga Basin Water Company Pty Limited; WUA No.1 Pty Limited; Kooragang Water Pty Limited; WUA Sydney Holdings Pty Ltd, Aquanet Sydney Pty Ltd, Rosehill Network Pty Ltd and/or any subsidiary, associated Company or related Body Corporate (as defined in the Corporations Act 2001) including all controlled or managed entities, or any other entities which the Insured has assumed an obligation to arrange insurance, as agreed from time to time with the Insurers and any other parties including joint ventures or partnerships all for their respective rights, interests and liabilities.

**Period of Insurance:** From: 4:00 p.m. local standard time 31 May 2020  
To: 4:00 p.m. local standard time 31 May 2021

**The Business:** Principally ownership, installation, operation, construction, maintenance, management and supervision of recycled water infrastructure including treatment plants, dams, pipelines, distribution, storage and sales of recycled and potable water and all business and trading activities associated with or incidental to any of the activities named above.

**Interest Insured** Public & Products Liability  
Legal Liability to third parties for Personal Injury and/or Property Damage and/or Advertising Liability happening within the Territorial Limits and arising out of an Occurrence.

Professional Indemnity  
Legal liability to third parties for Claims first made against the Insured during the Period of Insurance in respect of any kind of Civil Liability whenever occurring and whatsoever and howsoever incurred in connection with the conduct of the Insured's business.

Statutory Liability

Losses arising from Claims first made against the Insured during the Period of Insurance in respect of a Wrongful Breach of certain Acts of Parliament

**Retroactive Dates**

Professional Indemnity

31 May 2017

Statutory Liability

31 May 2014

**Territorial Limits:**

Anywhere in Australia except for business related travel for which cover will be worldwide.

**Limit(s) of Liability:**

Public & Products Liability

\$50,000,000 Ultimate Net Loss in respect of each claim or series of claims arising out of any one Occurrence but limited to \$50,000,000 in the aggregate for the Period of Insurance in respect of Products Liability.

Notwithstanding the above, a sub-limit of \$1,000,000 applies to Financial Loss (Negligent Failure to Supply)

Professional Indemnity

\$2,000,000 Ultimate Net Loss in respect of each claim or series of claims arising out of any One Occurrence and in the aggregate for the Period of Insurance.

Statutory Liability

\$1,000,000 Ultimate Net Loss Net Loss in respect of each Claim or series of Claims and in the aggregate for the Period of Insurance.

Yours faithfully,



Warwick Royson  
Principal

**Warwick Royson**  
Principal

Marsh Pty Ltd  
ABN 86 004 651 512  
Darling Park Tower 3  
201 Sussex Street  
SYDNEY NSW 2000  
PO Box H176  
AUSTRALIA SQUARE NSW 1215  
(02) 8864 8887 Fax (02) 8864 8051  
[warwick.royson@marsh.com](mailto:warwick.royson@marsh.com)  
[www.marsh.com.au](http://www.marsh.com.au)

## Certificate of Currency

### Directors' and Officers' Liability Insurance

Date: 29 May 2020

This certificate is issued as a matter of information only and confers no rights upon the holder. It does not amend, extend or alter the coverage afforded by the policy. It is provided as a summary only of the cover provided and is current only at the date of issue. For full particulars, reference must be made to the current policy wording.

<b>Insurer:</b>	Chubb Insurance Australia Limited
<b>Policy Number:</b>	93257339
<b>Insured:</b>	WUA TopCo Pty Limited
<b>Period of Insurance:</b>	From 4:00pm Australian Eastern Standard Time on 31 May 2020 To 4:00pm Australian Eastern Standard Time on 31 May 2021
<b>Limits(s) of Liability:</b>	\$10,000,000 any one claim and in the aggregate

Yours faithfully,



Warwick Royson  
Principal

Telephone: +61 02 9285 4000  
Website: [www.willistowerswatson.com.au](http://www.willistowerswatson.com.au)  
Direct Line: +61 02 9285 4042  
Email: [james.wong@willistowerswatson.com](mailto:james.wong@willistowerswatson.com)

Issue Date: 18 October 2019

To Whom It May Concern

## Certificate of Placement – Industrial Special Risks (Property Damage and Business Interruption)

In our capacity as Insurance Broker to the Named Insured shown below, we confirm having arranged the following insurance, the details of which are correct as at the Issue Date:

**Named Insured:** AquaNet Sydney Pty Limited  
Veolia Water Australia Pty Limited

**Insurer:** XL Insurance Company SE (50%)  
AAI Limited trading as Vero Insurance (50%)

**Policy Number:** AU00011210PR20A

**Interest Insured:** All real and personal property of every kind and description not otherwise excluded, belonging to the Named Insured or for which the Named Insured is responsible or has assumed the responsibility to insure

**Covering:** Insurers will indemnify the Named Insured in respect of Loss, destruction of and/or Damage to the Interest Insured at the Situation caused by a peril not otherwise excluded

**Limit of Liability:** \$128,000,000 any one Loss or series of Losses arising out of any one event at any one Situation

**Declared Values:** Section 1 - \$51,884,000  
Section 2 - \$33,505,809  
Indemnity Period: 24 months

**Location:** 1 East Parade, Fairfield NSW 2165

**Period of Insurance:** From 12pm 30 September 2020  
To 12pm 30 September 2021

**Notation:** The policy in clause 25.1(c) satisfies the requirements of clauses 25.1 through 25.3 of the O&M Agreement, and that there have been no alterations to the policy.



-----  
Signed for and on behalf of  
**Willis Australia Ltd ("Willis Towers Watson")**

**Disclaimer:**

This document has been prepared at the request of our client and does not represent an insurance policy, guarantee or warranty and cannot be relied upon as such. All coverage described is subject to the terms, conditions and limitations of the insurance policy and is issued as a matter of record only. This document does not alter or extend the coverage provided or assume continuity beyond the Expiry Date. It does not confer any rights under the insurance policy to any party. Willis Towers Watson is under no obligation to inform any party if the insurance policy is cancelled, assigned or changed after the Issue Date.

**Willis Australia Limited**  
ABN 90 000 321 237  
AFSL No: 240600  
Level 16 Angel Place  
123 Pitt St  
SYDNEY  
NSW 2000

Julian Gaillard  
VEOLIA WATER OPERATIONS PTY LTD  
Level 4 65 Pirrama Road  
PYRMONT NSW 2009

**issue date**

23/05/2020

**print date**

26/05/2020

Dear Julian

## statement of coverage

The following policy of insurance covers the full amount of the employer's liability under the *Workers Compensation Act 1987 (NSW)*.

## valid until

30/06/2021

### policy number

111540501

### legal name

VEOLIA WATER OPERATIONS PTY LTD

### trading name

### abn

14 061 161 297

### acn

061 161 297

### industry classification number (WIC)

370100 Water Supply  
370200 Sewerage and Drainage Services

### number of workers\*

156  
52

### wages/units<sup>+</sup>

\$22,727,500.00  
\$6,284,500.00

\* Number of workers includes contractors/deemed workers

+ Total wages/units estimated for the current period

## important information

Principals relying on this certificate should ensure it is accompanied by a statement under section 175B of the *Workers Compensation Act 1987 (NSW)*. Principals should also check and satisfy themselves that the information is correct and ensure that the proper workers compensation insurance is in place, ie. compare the number of employees on site to the average number of employees estimated; ensure that the wages are reasonable to cover the labour component of the work being performed; and confirm that the description of the industry/industries noted is appropriate. A principal contractor may become liable for any outstanding premium of the sub-contractor if the principal has failed to obtain a statement or has accepted a statement where there was reason to believe it was false.

Yours faithfully,



Jason McLaughlin  
General Manager, Workers Compensation – Underwriting  
icare workers insurance

An aerial photograph of an industrial facility, likely a water treatment plant. The facility features several large, cylindrical storage tanks, some with white tops and others with green bodies. A large, rectangular building with a white roof and green walls is situated in the center. The facility is surrounded by dense green trees and vegetation. In the foreground, there is a road and a railway track. The background shows more trees and a clear sky.

## Appendix A.09

### Other Relevant Information

Rosehill Network Pty Ltd – WICA Variation Application

# Certificate of Registration

OCCUPATIONAL HEALTH AND SAFETY MANAGEMENT SYSTEM - AS/NZS 4801:2001

This is to certify that:

WUA TopCo Pty Ltd  
Suite 1005, 147 Pirie Street  
Adelaide SA 5000

Holds Certificate Number:

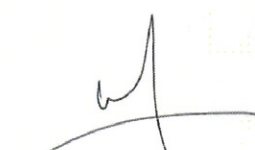
**OHS 614834**

and operates a Occupational Health & Safety Management System which complies with the requirements of AS/NZS 4801:2001 for the following scope:

The owner of water infrastructure assets and the management and of water utilities.

Previous Certificate Expires on 2018-03-25  
Recertification audit ended 2018-02-08

For and on behalf of BSI:

  
\_\_\_\_\_  
Marc Barnes, Managing Director, BSI Group ANZ

Original Registration Date: 2015-03-26

Latest Revision Date: 2018-07-26

Effective Date: 2018-07-06

Expiry Date: 2021-03-25

Page: 1 of 2



...making excellence a habit.™

This certificate was issued electronically and remains the property of BSI Group ANZ Pty Limited, ACN 078 659 211 and is bound by the conditions of contract. This certificate can be verified at [www.bsi-global.com/clientdirectory](http://www.bsi-global.com/clientdirectory). Printed copies can be validated at [www.bsi-global.com/ClientDirectory](http://www.bsi-global.com/ClientDirectory), or [www.jas-anz.org/register](http://www.jas-anz.org/register) or telephone + 61 2 9925 2700. Further clarifications regarding the scope of this certificate and the applicability of AS/NZS 4801:2001 requirements may be obtained by consulting the organization. This certificate is valid only if provided original copies are in complete set.

Certificate No: **OHS 614834**

Location	Registered Activities
Water Utilities Australia Pty Ltd Suite 1005, 147 Pirie Street Adelaide SA 5000	The owner of water infrastructure assets and the management and of water utilities.
Willunga Basin Water Co Pty Ltd Shop 15, 130 Main Road Mclaren Vale SA 5171	The owner of water infrastructure assets and the management and of water utilities.
Lightsview ReWater Supply Co Pty Ltd Suite 1005, 147 Pirie Street Adelaide SA 5000	The owner of water infrastructure assets and the management and of water utilities.
WUA TopCo Pty Ltd Kooragang Water Pty Ltd 15-19 Channel Road Mayfield West NSW 2304	The owner of water infrastructure assets and the management and of water utilities.

Original Registration Date: 2015-03-26  
Latest Revision Date: 2018-07-26

Effective Date: 2018-07-06  
Expiry Date: 2021-03-25

Page: 2 of 2

This certificate was issued electronically and remains the property of BSI Group ANZ Pty Limited, ACN 078 659 211 and is bound by the conditions of contract. This certificate can be verified at [www.bsi-global.com/clientdirectory](http://www.bsi-global.com/clientdirectory). Printed copies can be validated at [www.bsi-global.com/ClientDirectory](http://www.bsi-global.com/ClientDirectory), or [www.jas-anz.org/register](http://www.jas-anz.org/register) or telephone + 61 2 9925 2700. Further clarifications regarding the scope of this certificate and the applicability of AS/NZS 4801:2001 requirements may be obtained by consulting the organization. This certificate is valid only if provided original copies are in complete set.

Information and Contact: BSI Group ANZ Pty Limited, ACN 078 659 211: Suite 2, Level 7, 15 Talavera Road, Macquarie Park, NSW 2113  
A Member of the BSI Group of Companies.

# Certificate of Registration

## QUALITY MANAGEMENT SYSTEM - ISO 9001:2015

This is to certify that:

WUA TopCo Pty Ltd  
Suite 1005, 147 Pirie Street  
Adelaide SA 5000

Holds Certificate Number:

**FS 614830**

and operates a Quality Management System which complies with the requirements of ISO 9001:2015 for the following scope:

The owner of water infrastructure assets and the management and of water utilities.

Previous Certificate Expires on 2018-03-25  
Recertification audit ended 2018-02-08



For and on behalf of BSI:

Chris Cheung, Head of Compliance & Risk - Asia Pacific

Original Registration Date: 2015-03-26

Latest Revision Date: 2018-07-26

Effective Date: 2018-07-06

Expiry Date: 2021-03-25

Page: 1 of 2



...making excellence a habit.™

This certificate was issued electronically and remains the property of BSI Group ANZ Pty Limited, ACN 078 659 211 and is bound by the conditions of contract. This certificate can be verified at [www.bsi-global.com/clientdirectory](http://www.bsi-global.com/clientdirectory). Printed copies can be validated at [www.bsi-global.com/ClientDirectory](http://www.bsi-global.com/ClientDirectory). Further clarifications regarding the scope of this certificate and the applicability of ISO 9001:2015 requirements may be obtained by consulting the organization. This certificate is valid only if provided original copies are in complete set.

Information and Contact: BSI, Kitemark Court, Davy Avenue, Knowlhill, Milton Keynes MK5 8PP. Tel: + 44 345 080 9000  
BSI Assurance UK Limited, registered in England under number 7805321 at 389 Chiswick High Road, London W4 4AL, UK.  
Information and Contact: BSI Group ANZ Pty Limited, ACN 078 659 211: Suite 2, Level 7, 15 Talavera Road, Macquarie Park, NSW 2113  
A Member of the BSI Group of Companies.

Certificate No: **FS 614830**

Location	Registered Activities
Water Utilities Australia Pty Ltd Suite 1005, 147 Pirie Street Adelaide SA 5000	The owner of water infrastructure assets and the management and of water utilities.
Willunga Basin Water Co Pty Ltd Shop 15, 130 Main Road Mclaren Vale SA 5171	The owner of water infrastructure assets and the management and of water utilities.
Lightsview ReWater Supply Co Pty Ltd Suite 1005, 147 Pirie Street Adelaide SA 5000	The owner of water infrastructure assets and the management and of water utilities.
WUA TopCo Pty Ltd Kooragang Water Pty Ltd 15-19 Channel Road Mayfield West NSW 2304	The owner of water infrastructure assets and the management and of water utilities.

Original Registration Date: 2015-03-26

Latest Revision Date: 2018-07-26

Effective Date: 2018-07-06

Expiry Date: 2021-03-25

Page: 2 of 2

This certificate was issued electronically and remains the property of BSI Group ANZ Pty Limited, ACN 078 659 211 and is bound by the conditions of contract. This certificate can be verified at [www.bsi-global.com/clientdirectory](http://www.bsi-global.com/clientdirectory). Printed copies can be validated at [www.bsi-global.com/ClientDirectory](http://www.bsi-global.com/ClientDirectory). Further clarifications regarding the scope of this certificate and the applicability of ISO 9001:2015 requirements may be obtained by consulting the organization. This certificate is valid only if provided original copies are in complete set.

Information and Contact: BSI, Kitemark Court, Davy Avenue, Knowlhill, Milton Keynes MK5 8PP. Tel: + 44 345 080 9000  
BSI Assurance UK Limited, registered in England under number 7805321 at 389 Chiswick High Road, London W4 4AL, UK.  
Information and Contact: BSI Group ANZ Pty Limited, ACN 078 659 211: Suite 2, Level 7, 15 Talavera Road, Macquarie Park, NSW 2113  
A Member of the BSI Group of Companies.

# Certificate of Registration

## ENVIRONMENTAL MANAGEMENT SYSTEM - ISO 14001:2015

This is to certify that:

WUA TopCo Pty Ltd  
Suite 1005, 147 Pirie Street  
Adelaide SA 5000

Holds Certificate Number:

**EMS 614831**

and operates an Environmental Management System which complies with the requirements of ISO 14001:2015 for the following scope:

The owner of water infrastructure assets and the management and of water utilities.

Previous Certificate Expires on 2018-03-25  
Recertification audit ended 2018-02-08



For and on behalf of BSI:

Chris Cheung, Head of Compliance & Risk - Asia Pacific

Original Registration Date: 2015-03-26

Latest Revision Date: 2018-07-26

Effective Date: 2018-07-06

Expiry Date: 2021-03-25

Page: 1 of 2



...making excellence a habit.™

This certificate was issued electronically and remains the property of BSI Group ANZ Pty Limited, ACN 078 659 211 and is bound by the conditions of contract. This certificate can be verified at [www.bsi-global.com/clientdirectory](http://www.bsi-global.com/clientdirectory). Printed copies can be validated at [www.bsi-global.com/ClientDirectory](http://www.bsi-global.com/ClientDirectory). Further clarifications regarding the scope of this certificate and the applicability of ISO 14001:2015 requirements may be obtained by consulting the organization. This certificate is valid only if provided original copies are in complete set.

Information and Contact: BSI, Kitemark Court, Davy Avenue, Knowlhill, Milton Keynes MK5 8PP. Tel: + 44 345 080 9000

BSI Assurance UK Limited, registered in England under number 7805321 at 389 Chiswick High Road, London W4 4AL, UK.

Information and Contact: BSI Group ANZ Pty Limited, ACN 078 659 211: Suite 2, Level 7, 15 Talavera Road, Macquarie Park, NSW 2113

A Member of the BSI Group of Companies.

Certificate No: **EMS 614831**

Location	Registered Activities
Water Utilities Australia Pty Ltd Suite 1005, 147 Pirie Street Adelaide SA 5000	The owner of water infrastructure assets and the management and of water utilities.
Willunga Basin Water Co Pty Ltd Shop 15, 130 Main Road Mclaren Vale SA 5171	The owner of water infrastructure assets and the management and of water utilities.
Lightsview ReWater Supply Co Pty Ltd Suite 1005, 147 Pirie Street Adelaide SA 5000	The owner of water infrastructure assets and the management and of water utilities.
WUA TopCo Pty Ltd Kooragang Water Pty Ltd 15-19 Channel Road Mayfield West NSW 2304	The owner of water infrastructure assets and the management and of water utilities.

Original Registration Date: 2015-03-26

Latest Revision Date: 2018-07-26

Effective Date: 2018-07-06

Expiry Date: 2021-03-25

Page: 2 of 2

This certificate was issued electronically and remains the property of BSI Group ANZ Pty Limited, ACN 078 659 211 and is bound by the conditions of contract. This certificate can be verified at [www.bsi-global.com/clientdirectory](http://www.bsi-global.com/clientdirectory). Printed copies can be validated at [www.bsi-global.com/ClientDirectory](http://www.bsi-global.com/ClientDirectory). Further clarifications regarding the scope of this certificate and the applicability of ISO 14001:2015 requirements may be obtained by consulting the organization. This certificate is valid only if provided original copies are in complete set.

Information and Contact: BSI, Kitemark Court, Davy Avenue, Knowlhill, Milton Keynes MK5 8PP. Tel: + 44 345 080 9000  
BSI Assurance UK Limited, registered in England under number 7805321 at 389 Chiswick High Road, London W4 4AL, UK.  
Information and Contact: BSI Group ANZ Pty Limited, ACN 078 659 211: Suite 2, Level 7, 15 Talavera Road, Macquarie Park, NSW 2113  
A Member of the BSI Group of Companies.