

## Submission to IPART

<b>Organisation</b>	Tamworth Regional Council
<b>Primary contact</b>	John Sommerlad <b>Director Business and Community</b> 02 6767 5555 trc@tamworth.nsw.gov.au
<b>General Manager</b>	Paul Bennett
<b>Submission date</b>	17 November 2017
<b>Trim Reference</b>	2017-240960
<b>Response to</b>	<b>Maximum fares for rural and regional bus services from 01 January 2018</b>
<b>Location of report</b>	<a href="https://www.ipart.nsw.gov.au/Home/Industries/Transport/Reviews/Rural-and-Regional-Buses/Rural-and-Regional-Bus-services-from-1-January-2018">https://www.ipart.nsw.gov.au/Home/Industries/Transport/Reviews/Rural-and-Regional-Buses/Rural-and-Regional-Bus-services-from-1-January-2018</a>
<b>Source of Information</b>	IPART NSW <a href="https://www.buslinesgroup.com.au/tamworth.html">https://www.buslinesgroup.com.au/tamworth.html</a> <a href="http://profile.id.com.au/tamworth/population-header?WebID=10">http://profile.id.com.au/tamworth/population-header?WebID=10</a>

### Background

Tamworth Regional Council (TRC) in 2017 adopted a revised Community Strategic Plan (CSP), Delivery Program (DP) and Annual Operational Plan (AOP). As part of this process it was identified that Public and Community Transport Services was important to our community and our role as council was to advocate for these services.

### Tamworth Regional Council Community Strategic Plan

<b>Theme</b>	An accessible region
<b>Objective</b>	<b>A2</b> Improve choice, availability and quality of Transport options in our Region
<b>Strategy</b>	<b>A22</b> Improve and expand the regions public and community transport services.
<b>Program</b>	<b>A2201 Public and Community Transport Services</b>
<b>Our Promise</b>	Advocate for improved and expanded public and community transport within the Region

*The TRC CSP also aligns with the New England North West Plan 2036*

### The New England North West Regional Plan 2036 alignment

<b>A strong and dynamic regional economy</b>		
7	Build strong economic centres	✓
8	Expand tourism and visitor opportunities	✓
9	Coordinate growth in the cities of Armidale and Tamworth	✓
<b>Strong infrastructure and transport networks for a connected future</b>		
15	Facilitate air and public transport infrastructure	✓
<b>Attractive and thriving communities</b>		
17	Strengthen community resilience	✓
18	Provide great places to live	✓
19	Support healthy, safe and socially engaged communities	✓
20	Deliver greater housing diversity to suit changing needs	✓
21	Deliver well planned rural residential housing	✓

## Tamworth Region

The Tamworth Regional Council area is located in the New England Region of New South Wales, about 410 kilometres north-west of Sydney and 580 kilometres south of Brisbane and covers an area of 9,893km square hectares.

The recent Census data is included in this response, as a reference when reviewing the draft fares for regional and rural bus services.

As an advocate for our community, Tamworth Regional Council is focussed on: the following factors are important when reviewing any changes to community services:

- Affordable, quality and efficient Public Transport which is equitable for the community.

## Tamworth Region – Public Transport usage

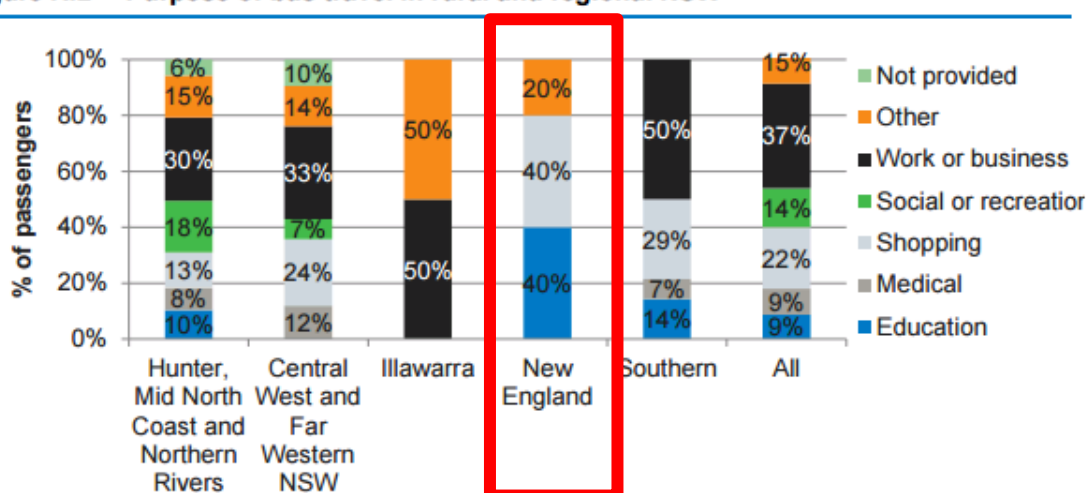
With 39 schools within the Tamworth Region, transportation for school students would be seen as the highest consumer of bus services.

In the 2011 Census, approximately 100 people of the workforce identified that they utilised a bus as transport to work. However, this does not identify the percentage of the population that utilise bus as a primary mode of transport within the region, and or for any other purpose. The draft report from IPART<sup>1</sup>, from page 139 (extract below), shows that a large proportion of the bus travel is related to shopping, though as the Note details, there was an insufficient number of responses from the New England.

### Most passengers use local bus services to travel for work, recreation and shopping

Passengers use local bus services for a range of reasons. They use buses to travel for work or business (37%), shopping (22%), social or recreation (14%), medical appointments (9%), and education (9%).

**Figure K.2 Purpose of bus travel in rural and regional NSW**



**Note:** There are an insufficient number of responses from Illawarra (n=2) and New England (n=5) to present the survey results at a regional level.

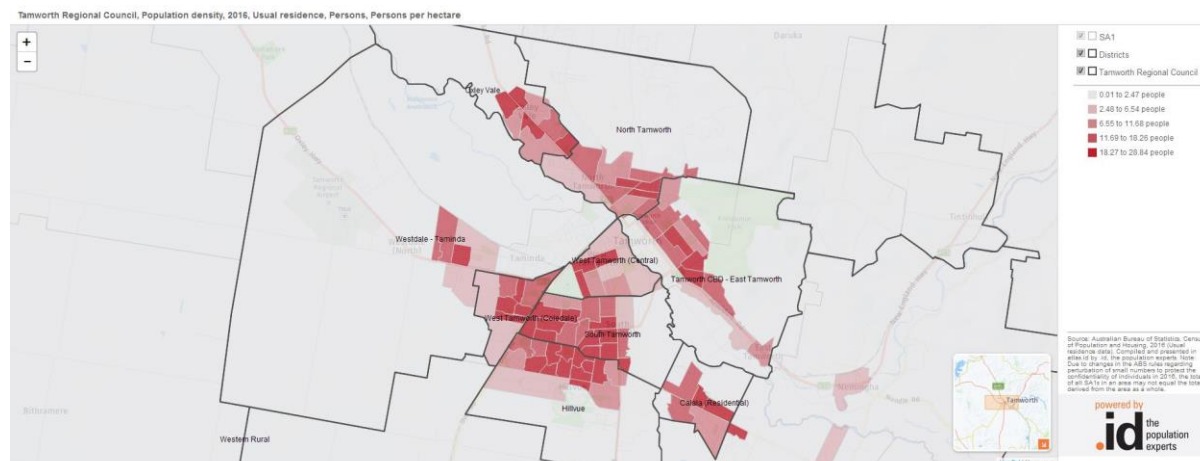
**Data source:** IPART rural and regional bus passenger survey, June 2017.

<sup>1</sup> <https://www.ipart.nsw.gov.au/files/sharedassets/website/shared-files/pricing-reviews-transport-services-publications-rural-and-regional-bus-fares-2018-2022/maximum-fares-for-rural-and-regional-bus-services-october-2017.pdf>

## Population

The Tamworth Urban area estimated resident population<sup>2</sup> of 45,516 is 76% of the Tamworth Regional Council Local Government Area of 60,998. The majority of these residents are within 10km of the Tamworth Central Business District.

Within TRC, over 94% of the population live and work within the area, with only 6% working but living outside the TRC Local Government Area (LGA).



## Population density, 2016

Tamworth Regional Council - Usual residence			
Area	Number	Hectare	Persons per hectare
Barraba - Rural North	1,696	198,885	0.01
Calala (Residential)	2,719	385	7.06
Eastern Highlands	4,902	209,869	0.02
Hillvue	6,478	1,178	5.50
Manilla and District	3,238	221,208	0.01
Moore Creek - Daruka - Tintinhull - Hallsville	4,079	17,836	0.23
North Tamworth	5,134	1,817	2.82
Nundle - Rural South	1,290	160,027	0.01
Oxley Vale	3,742	885	4.23
South Tamworth	6,570	642	10.24
Tamworth CBD - East Tamworth	5,541	1,688	3.28
Warral - Kingswood - Nemingha - Calala (Rural)	3,191	16,243	0.20
West Tamworth (Central)	2,447	321	7.61
West Tamworth (Coledale)	2,817	274	10.28
Westdale - Taminda	2,739	5,966	0.46
Western Rural	3,013	152,116	0.02
Tamworth Urban Area	45,456	47,236	0.96
<b>Tamworth Regional Council</b>	<b>59,663</b>	<b>989,344</b>	<b>0.06</b>

\*Source: Australian Bureau of Statistics, [Census of Population and Housing](https://www.abs.gov.au/census) 2016. Compiled and presented in atlas.id by [.id](https://www.atlas.id), the population experts.

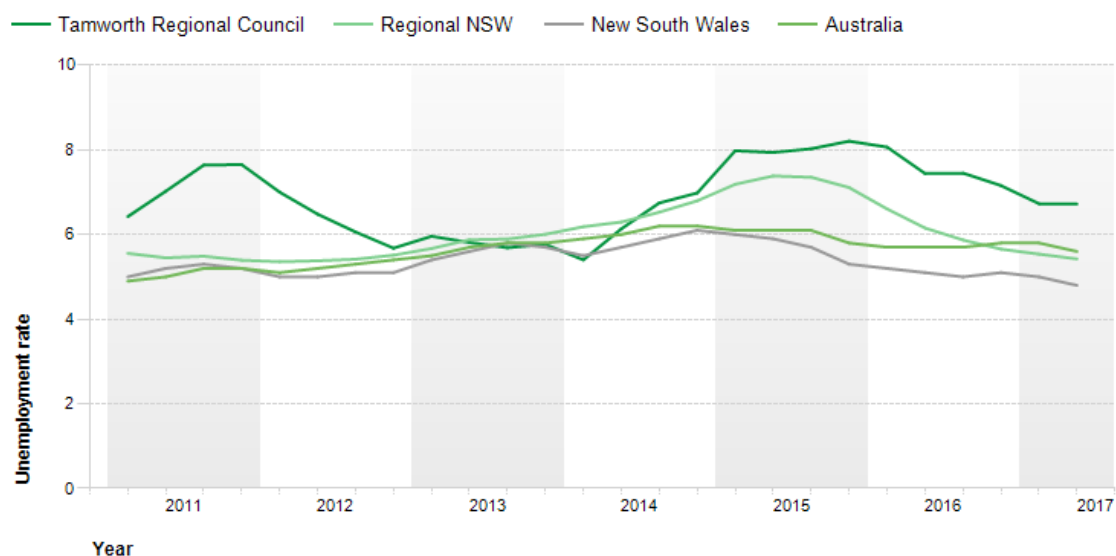
<sup>2</sup> Sourced from: <http://profile.id.com.au/tamworth/population?WebID=10>

Tamworth Regional Council - Total people (Usual residence)	2016		
Population group	Number	%	Regional NSW %
Males	29,077	48.7	49.2
Females	30,581	51.3	50.8
Aboriginal and Torres Strait Islander population	6,038	10.1	5.5
Australian citizens	52,985	88.8	88.7
Eligible voters (citizens aged 18+)	39,654	66.5	68.3
Population over 15	47,556	79.7	81.6

## Unemployment rate

In the 2017 June quarter, the unemployment rate in Tamworth Regional Council was 6.72%. The unemployment rate is derived from the ABS labour force survey and Centrelink data and compiled by the Department of Employment. It is published quarterly in the Small Area Labour Markets publication, for Local Government Areas. The unemployment rate shown here is the proportion of the resident labour force (those in work or looking for work, and aged over 15) who are looking for work. Unemployment does not include people who don't have a job but are not seeking a job.

### Quarterly unemployment rate



Source: Australian Bureau of Statistics, Labour force survey, catalogue number 6202.0, and Department of Employment, Small Area Labour Markets, June 2017. Compiled and presented in economy.id by .id the population experts.

## Population forecast and an Ageing Population

In 2011, the dominant age structure for persons in Tamworth Region was ages 10 to 14, which accounted for 7.0% of the total persons.

The largest increase in persons between 2011 and 2026 is forecast to be in ages 75 to 79, which is expected to increase by 1,170 and account for 4.3% of the total persons.

### Forecast age structure - 5 year age groups

Tamworth Region - Total persons	2011		2026		2041		Change between 2011 and 2041
	Number	%	Number	%	Number	%	Number
Age group (years)							
0 to 4	4,055	7.0	4,794	6.9	5,441	6.8	+1,386
5 to 9	3,979	6.8	4,926	7.1	5,599	7.0	+1,620
10 to 14	4,081	7.0	4,786	6.9	5,513	6.9	+1,432
15 to 19	4,027	6.9	4,205	6.1	4,877	6.1	+850
20 to 24	3,478	6.0	3,628	5.3	4,216	5.2	+737
25 to 29	3,369	5.8	3,758	5.4	4,235	5.3	+866
30 to 34	3,167	5.4	4,050	5.9	4,501	5.6	+1,334
35 to 39	3,512	6.0	4,266	6.2	4,810	6.0	+1,298
40 to 44	3,722	6.4	4,148	6.0	4,794	6.0	+1,072
45 to 49	3,855	6.6	3,951	5.7	4,757	5.9	+902
50 to 54	4,047	6.9	3,961	5.7	4,611	5.7	+565
55 to 59	3,746	6.4	3,998	5.8	4,518	5.6	+773
60 to 64	3,498	6.0	4,012	5.8	4,352	5.4	+854
65 to 69	2,926	5.0	3,928	5.7	4,259	5.3	+1,334
70 to 74	2,393	4.1	3,474	5.0	4,073	5.1	+1,680
75 to 79	1,831	3.1	3,000	4.3	3,787	4.7	+1,957
80 to 84	1,356	2.3	2,156	3.1	3,094	3.8	+1,738
85 and over	1,188	2.0	1,987	2.9	3,003	3.7	+1,815
<b>Total persons</b>	<b>58,229</b>	<b>100.0</b>	<b>69,030</b>	<b>100.0</b>	<b>80,441</b>	<b>100.0</b>	<b>+22,212</b>

## Low income households

### Low income households (less than \$650 per week), 2016

Tamworth Regional Council - Enumerated			
Area	Number	Total households	Percent %
Barraba - Rural North	243	692	35.2
Calala (Residential)	130	963	13.5
Eastern Highlands	343	1,778	19.3
Hillvue	280	2,191	12.8
Manilla and District	356	1,178	30.2
Moore Creek - Daruka - Tintinhull - Hallsville	87	1,243	7.0
North Tamworth	474	1,962	24.2
Nundle - Rural South	154	509	30.3
Oxley Vale	245	1,251	19.6
South Tamworth	773	2,677	28.9
Tamworth CBD - East Tamworth	409	2,258	18.1
Warral - Kingswood - Nemingha - Calala (Rural)	112	1,036	10.8
West Tamworth (Central)	253	1,031	24.5
West Tamworth (Coledale)	332	929	35.7
Westdale - Taminda	110	786	14.0
Western Rural	114	987	11.5
Tamworth Urban Area	3,206	16,326	19.6
<b>Tamworth Regional Council</b>	<b>4,689</b>	<b>22,094</b>	<b>21.2</b>
<b>Regional NSW</b>	<b>220,797</b>	<b>1,001,390</b>	<b>22.0</b>
<b>New England and North West SA4</b>	<b>15,859</b>	<b>67,994</b>	<b>23.3</b>
<b>Dubbo Regional Council area</b>	<b>3,459</b>	<b>17,812</b>	<b>19.4</b>
<b>New South Wales</b>	<b>469,011</b>	<b>2,640,304</b>	<b>17.8</b>
<b>Australia</b>	<b>1,514,250</b>	<b>8,434,530</b>	<b>18.0</b>

\*Source: Australian Bureau of Statistics, [Census of Population and Housing](#) 2016. Compiled and presented in atlas.id by [.id](#), the population experts.

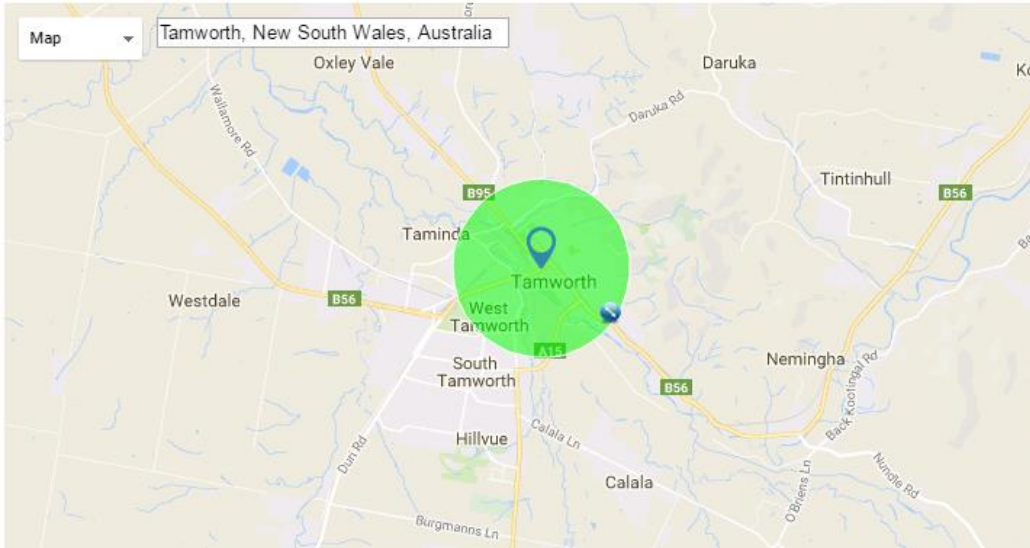
Tamworth Regional Council Total Persons (Usual residence)	2016		
	Number	%	Regional NSW %
Service age group (years)			
Babies and pre-schoolers (0 to 4)	3,906	6.5	5.8
Primary schoolers (5 to 11)	5,776	9.7	8.9
Secondary schoolers (12 to 17)	4,846	8.1	7.3
Tertiary education and independence (18 to 24)	4,540	7.6	7.9
Young workforce (25 to 34)	7,190	12.1	11.0
Parents and homebuilders (35 to 49)	10,715	18.0	18.0
Older workers and pre-retirees (50 to 59)	7,794	13.1	13.8
Empty nesters and retirees (60 to 69)	7,171	12.0	13.1
Seniors (70 to 84)	6,288	10.5	11.4
Elderly aged (85 and over)	1,437	2.4	2.7
<b>Total</b>	<b>59,663</b>	<b>100.0</b>	<b>100.0</b>

Source: Australian Bureau of Statistics, [Census of Population and Housing](#) 2011 and 2016. Compiled and presented by [.id](#), the population experts.

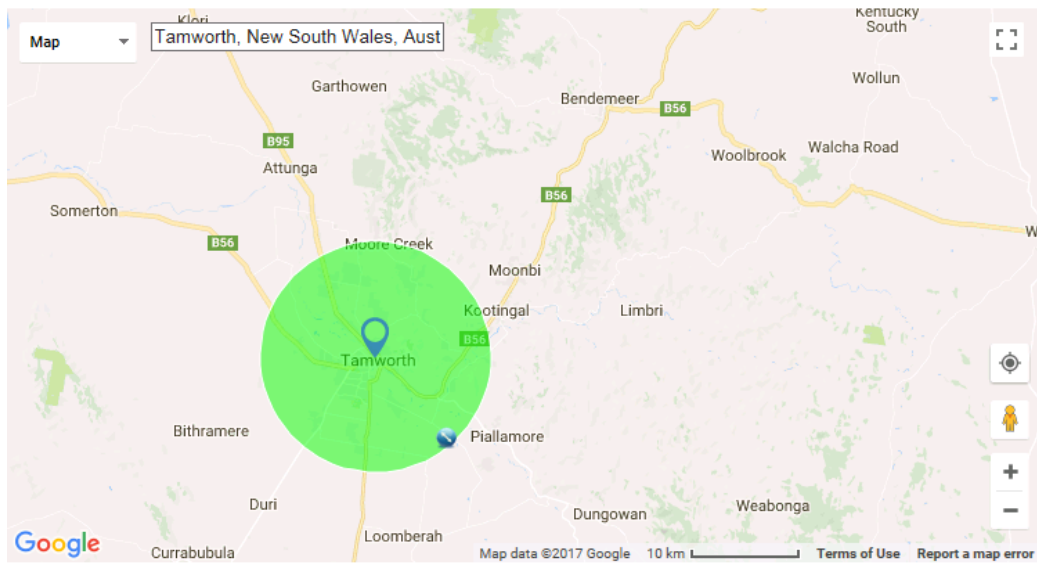
## Route Distance

The graphics below provide a visual of the Tamworth CBD with a radius highlighted, 2km and 10km.

### 2km from CBD



### 10km from the Tamworth CBD



## Draft fares

Table 1 and Table 2 presented below provide an extract from the Draft Report from IPART on the Maximum fares for rural and regional bus services from 01 January 2018, compared with the local service provider Tamworth Buslines<sup>3</sup> (part of the Buslines Group)

### Single Journeys

Table 1

From IPART Draft Report						website	calculation
Maximum fares for rural and regional bus services from 01 January 2018							
Type	Fare Band	Route distance (km)	Old Sections (for info)	Current Maximum Fares	2018 draft fare	Tamworth Buslines Current fares	Variance from current and draft fares
Adult	1	< 2	1-2	\$2.30 - \$3.40	\$2.30	\$2.30	\$0.00
Adult	2	=> 2 and < 10	2-7	\$3.40 - \$6.90	\$3.40	\$3.40 \$4.30 \$5.00 \$5.70 \$6.00	\$0.00 -\$1.30 -\$1.60 -\$1.70 -\$2.60
Adult	3	=>10 and < 25	7-16	\$6.90 - \$10.80	\$4.90	\$6.00	-\$1.10
Adult	4	=>25 and < 40	16-25	\$10.80 - \$13.90	\$7.20	\$6.00	\$1.20
Adult	5	=>40 and < 60	26-38	\$14.20 - \$17.50	\$9.60	\$6.00	\$3.60
Adult	6	=>60 and < 90	38-57	\$17.50 - \$21.90	\$14.40	\$6.00	\$8.40
Adult	7	=>90 and < 120	57-75	\$21.90 - \$30.00	\$20.80	n/a	n/a
Adult	8	=>120 and < 160	76-100	\$30.00 - \$40.70	\$29.20	n/a	n/a
Adult	9	=>160 and < 200	101-125	\$40.70 - \$48.20	\$38.70	n/a	n/a
Adult	10	200+	126+	\$48.20 - \$60.00	\$48.20	n/a	n/a

### Fares from Tamworth to Key Regional Destinations (Tamworth Buslines) compared with IPART Draft Fares

Table 2

Locality	Adult 2017	km's (approximate from Tamworth CBD)	Fare Band proposed	2018 draft fare maximum rate	Variance
Appleby	\$6.00	22	3	\$4.90	-\$1.10
Attunga	\$6.00	20	3	\$4.90	-\$1.10
Bendemeer	\$6.00	42	5	\$9.60	\$3.60
Currabubula	\$6.00	33	4	\$7.20	\$1.20
Duri	\$6.00	18	3	\$4.90	-\$1.10
Hallsville	\$5.70	11	3	\$4.90	-\$1.10
Kootingal	\$6.00	17	3	\$4.90	-\$1.10
Manilla	\$6.00	47	5	\$9.60	\$3.60
Moonbi	\$6.00	22	3	\$4.90	-\$1.10
Moonbi Lookout	\$6.00	28	4	\$7.20	\$1.20
Nemingha	\$5.70	9	2	\$3.40	-\$2.30
Oxley Vale	\$5.00	5	2	\$3.40	-\$1.60
Porcupine Lane	\$6.00	12	3	\$4.90	-\$1.10
Quirindi	\$6.00	70	6	\$14.40	\$8.40
Sulcor	\$6.00	20	3	\$3.40	-\$1.10
Werris Creek	\$6.00	45	5	\$9.60	\$3.60

<sup>3</sup> <https://www.buslinesgroup.com.au/tamworth-fares.html>



Extract from Maximum fares for rural and regional bus services from 01 January 2018, page 2<sup>4</sup>

Figure 1

**Table 1.1 Draft decision on adult fares for single journeys from 1 January 2018 (nominal, including GST)**

Fare band	Route distance (km)	Old sections (for information) each section is approximately 1.6km	Current maximum fares	Draft maximum fares		
				2018	2019	2020
1	0 to less than 2	1-2	\$2.30 - \$3.40	\$2.30	\$2.40	\$2.40
2	2 to less than 10	2-7	\$3.40 - \$6.90	\$3.40	\$3.50	\$3.60
3	10 to less than 25	7-16	\$6.90 - \$10.80	\$4.90	\$5.00	\$5.10
4	25 to less than 40	16-25	\$10.80 - \$13.90	\$7.20	\$7.40	\$7.60
5	40 to less than 60	26-38	\$14.20 - \$17.50	\$9.60	\$9.80	\$10.10
6	60 to less than 90	38-57	\$17.50 - \$21.90	\$14.40	\$14.80	\$15.10
7	90 to less than 120	57-75	\$21.90 - \$30.00	\$20.80	\$21.30	\$21.90
8	120 to less than 160	76-100	\$30.00 - \$40.70	\$29.20	\$29.90	\$30.70
9	160 to less than 200	101-125	\$40.70 - \$48.20	\$38.70	\$39.70	\$40.70
10	200 or more	126+	\$48.20 - \$60.00	\$48.20	\$49.40	\$50.60

Note: Our draft determination sets fares based on route distance not sections.

**Table 1.2 Draft decision on adult daily ticket (nominal, including GST)**

Fare band	Route distance (km) for longest trip during day	Draft daily ticket		
		2018	2019	2020
1	0 to less than 2	\$6.90	\$7.20	\$7.20
2	2 to less than 10	\$9.10	\$9.40	\$9.60
3	10 to less than 25	\$12.10	\$12.40	\$12.60
4	25 to less than 40	\$16.70	\$17.20	\$17.60
5	40 to less than 60	\$21.50	\$22.00	\$22.60
6	60 to less than 90	\$31.10	\$32.00	\$32.60
7	90 to less than 120	\$43.90	\$45.00	\$46.20
8	120 to less than 160	\$60.70	\$62.20	\$63.80
9	160 to less than 200	\$79.70	\$81.80	\$83.80
10	200 or more	\$98.70	\$101.20	\$103.60

We found that the price of the Regional Excursion Daily (RED) ticket should be adjusted so that price relativities are maintained over time. Our draft recommendation on the RED ticket is set out in Table 1.3.

**Table 1.3 Draft recommendations on the RED ticket**

Determination year	RED Ticket price
2018	\$2.50
2019	\$2.60
2020	\$2.70

<sup>4</sup> <https://www.ipart.nsw.gov.au/files/sharedassets/website/shared-files/pricing-reviews-transport-services-publications-rural-and-regional-bus-fares-2018-2022/maximum-fares-for-rural-and-regional-bus-services-october-2017.pdf>

## Findings

Table 1 and Table 2 in this document present the draft fares, in comparison with the current fare displayed on the Tamworth Buslines website for services delivered in the Tamworth Region.

Tamworth Buslines currently do not charge any adult fare (including GST) greater than \$6.00. Whilst a majority of the current fares displayed will result in a fare reduction to the community, six (6) of the localities presented have a draft fare that results in a higher Maximum fare rate band.

Based on the draft fares, the majority of the population would be affected by the Fare Band 1 and 2 (0 up to 10km). The fares that are in the bands 3 and above, will impact the smaller communities in our region, both in reductions and increases in the costs on both full fare and concession fares.

The daily ticket will provide an overall reduction in prices for community members travelling more than 3 times per day (excluding the Red 25 tickets). If a community member is travelling more than 50km for a return trip (25 each way), the fare increases for these community members could be affect the use of this service.

The comparisons below provide how the draft adult fares appear to the community, based on the Tamworth Buslines website and the IPART draft report:

### Comparison example 1 – Tamworth/Quirindi:

Type of fare	Current Fee from website	Proposed Fee	Variance
One way – Adult full fare	\$6.00	\$14.40	\$8.40
Return – Adult full fare	\$12.00	\$28.80	\$16.80
Daily ticket – Adult full fare	n/a	\$31.10	\$31.10 (new)
One way - Concession	\$3.00	\$7.20	\$4.20
Return way - Concession	\$6.00	\$14.40	\$8.40
Daily ticket - Concession	n/a	\$15.55	\$15.55 (new)

### Comparison example 2 – Tamworth/Bendemeer:

Type of fare	Current Fee from website	Proposed Fee	Variance
One way – Adult full fare	\$6.00	\$9.60	\$3.60
Return – Adult full fare	\$12.00	\$19.20	\$7.20
Daily ticket – Adult full fare	n/a	\$21.50	\$21.50 (new)
One way - Concession	\$3.00	\$4.80	\$1.20
Return way - Concession	\$6.00	\$9.60	\$2.40
Daily ticket - Concession	n/a	\$10.75	\$10.75 (new)

### Comparison example 3 – Tamworth/Nemingha:

Type of fare	Current Fee from website	Proposed Fee	Variance
One way – Adult full fare	\$6.00	\$3.40	-\$2.30
Return – Adult full fare	\$12.00	\$6.80	-\$5.20
Daily ticket – Adult full fare	n/a	\$9.10	\$9.10 (new)
One way - Concession	\$3.00	\$1.70	-\$1.30
Return way - Concession	\$6.00	\$3.40	-\$2.60
Daily ticket - Concession	n/a	\$4.55	\$4.55 (new)

## Considerations for IPART

---

Tamworth Regional Council advocates that any changes, and especially any increase to fees and charges, are consulted with the Tamworth Regional Community and where appropriate the Liverpool Plains Shire Council (given the destination of services move between the Tamworth and Liverpool Plains regions) prior to implementation. As this document states that fees will be effective 01 January 2018 we want to ensure appropriate notice is given to residents with time for adjustment should the feedback compel a change to the exhibited drafted fare structure.

We also encourage the review of the daily ticket structure with consideration to rural areas, where a return trip from the origin would provide a discount, rather than 3 or more journeys travelled within a day.

With above average unemployment and an aging population, Tamworth Regional Council believes any increase in fares must be affordable for those who depend on these services.

**For example:** where the current categories utilised by the Service Provider are not in line with the current Fare Bands, is there an assumption/expectation the service provider will increase to the maximum value on 01 January 2018 to offset the reduced income from the reduced fees, and if not immediately will this be gradually implemented?

## Additional Questions

---

### ***Communication and Community Engagement***

Is there a communications strategy for the implementation of these fares that we are able to access to assist with information as we get closer to the implementation of the approved revised fee structure?

## Tamworth Regional Council

---

PO Box 555, Tamworth NSW 2340

[trc@tamworth.nsw.gov.au](mailto:trc@tamworth.nsw.gov.au)

Phone: (02) 6767 5555

[www.tamworth.nsw.gov.au](http://www.tamworth.nsw.gov.au)

[www.facebook.com/TamworthRegionalCouncil](https://www.facebook.com/TamworthRegionalCouncil)