

A decorative graphic consisting of several overlapping, wavy lines in shades of green and blue, flowing across the top of the page.

# **Gosford City Council's Submission to IPART 2012**

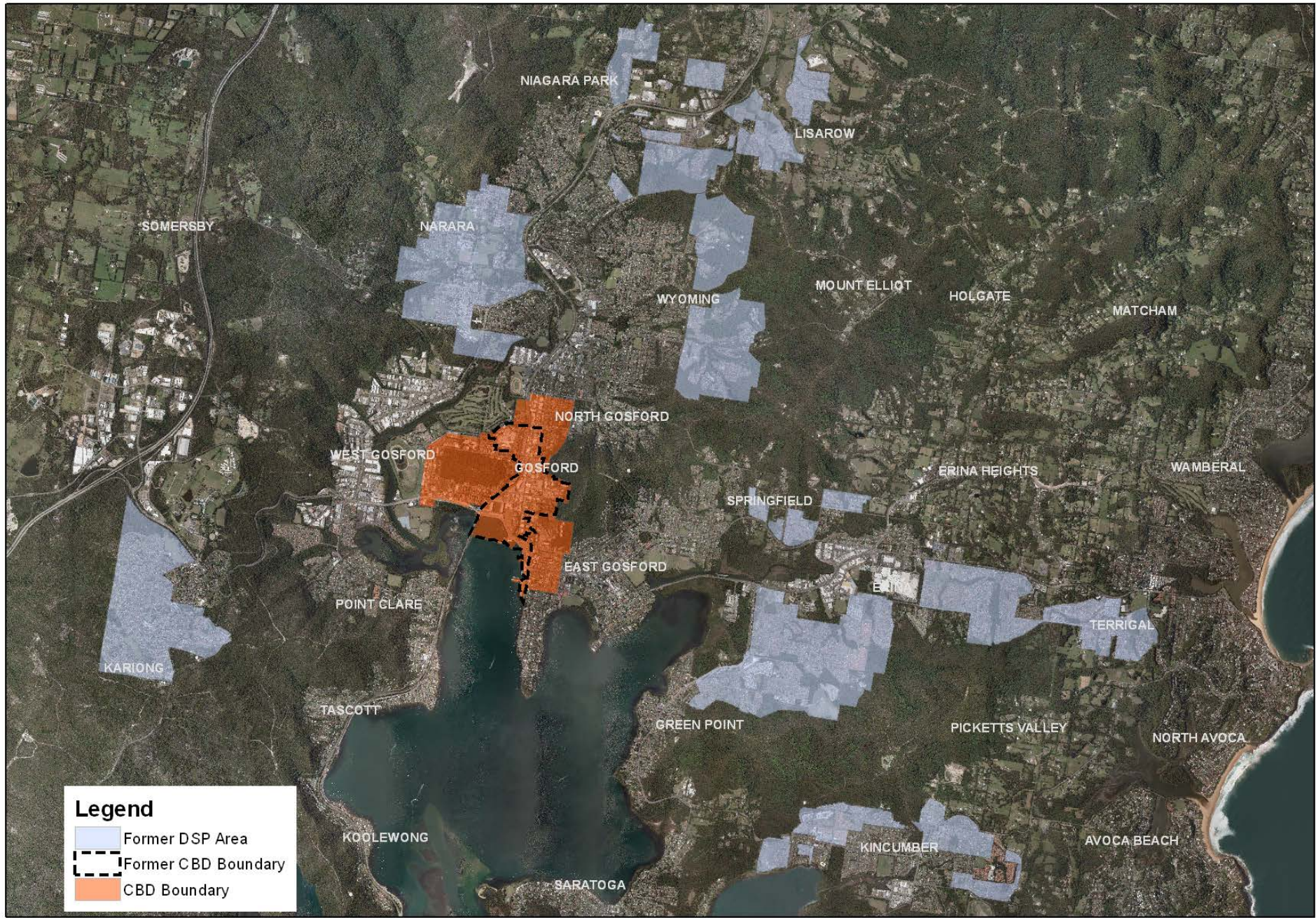
## **Review of Developer Charges**

Public Hearing  
12 November 2012

# Developer Charges 2012/13

- Five-yearly review during 2012
- Effective from 2012/13
- Public exhibition
- Reduced DSP areas from 11 to 2
- Significant decrease in developer charges





**Legend**

- Former DSP Area
- Former CBD Boundary
- CBD Boundary

# Council's response to review

- Support retention of current discount rates
- Propose consumption parameter change to 168kL per ET
- Support removal of 85% cap on Wyong charges



# Resulting developer charges

---

## REAL \$12/13 – current charges

---

Developer servicing area		Water	Sewerage	Total
Redevelopment	per ET	1,133	2,367	3,500
Gosford CBD	per ET	1,841	4,330	6,171

---



---

## REAL \$12/13 – proposed charges if consumption parameter adopted

---

Developer servicing area		Water	Sewerage	Total
Redevelopment	per ET	2,032	2,367	4,399
Gosford CBD	per ET	2,697	4,330	7,027

---